

## Component Replacement

- electrical -



*Xperia XA2 Plus*  
*H3413,H4413,H4493*

## CONTENTS

1	Replaceable Components .....	3
2	Tools .....	5
3	Component Placing.....	7
4	Additional Repair info .....	11
	4.1 Primary Side .....	11
	4.2 Secondary Side .....	12
5	Revision History .....	16

*For general information about electrical repair related issues, refer to 1220-1336: Generic Repair Manual - electrical*

*Baking prior to repair is required, if the board have been exposed to air more than 12 hours from PWB package opening. Too long exposure time increase the level of moisture in PWB and the PWB could delaminate during repair process and result in direct or latent failures and reduce reliability.  
The boards shall be baked in 125°C ±5°C for 4 hours .*

*Test after electrical replacement: refer to Mechanical Test Instruction.*

*All Electrical components are RLC level C.*

*Do not remove shield can lids (RF performance will be damaged).*

*If there is other components right next to replacement component, protect the other components with Kapton tape.*

## 1 Replaceable Components

EXPLANATION OF ABBREVIATIONS USED IN THE COLUMN 'COMMENTS' BELOW

### **REPAIR METHOD**

**HA** = Hot Air (removal & mounting)

**ST** = Soldering Tool (removal & mounting)

**HA/ST** = Hot Air for removal – Soldering Tool for mounting

**BGA** = BGA Station

**BH** = Bottom Heater

### **ADDITIONAL INFORMATION**

⇒ **1** (2,3,4, etc.) = Proceed to 'Additional Repair Info' for further instructions in the indicated section(s).

## Primary Side

Position	Component	Part no.	Comments
U3901	MEMS MIC KRM0300-035090 HOSIDEN	22200000V00	HA+BH ⇨1
J2802	MEMSOCKET ST11S008V4H JAE	2334000054W	HA+BH or BGA ⇨2
J2803	Dual SIMSOCKET S113F01-01 XINTAILI	23040001K00	HA+BH or BGA ⇨3
J2803	Single SIMSOCKET S113F01-02 XINTAILI	23040001J00	HA+BH or BGA ⇨4

### Note:

**J2803 (Single SIMSOCKET S113F01-02 XINTAILI, 23040001J00) is single SIM connector, only applicable for single SIM products (H3413)**

**J2803 (Dual SIMSOCKET S113F01-01 XINTAILI, 23040001K00) is dual SIM connector, only applicable for dual SIM products (H4413,H4493).**

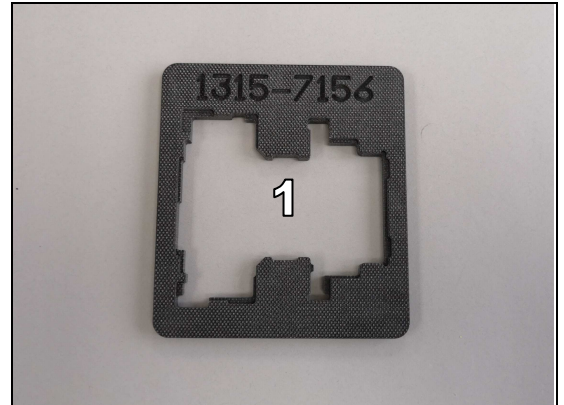
## Secondary Side

Position	Component	Part no.	Comments
J3801	BATT CONN BM22L-4P-V(87) HRS	23030000U00	HA+BH ⇨1
J3701	BTB CONN BM20B(0.8)-50DS-0.4V(51) HRS	23080007Z00	HA+BH or BGA ⇨2
J3601	BTB CONN ASE5S1210 ATC	C/23080006100	HA+BH or BGA ⇨3
J3901	BTB CONN ASE5S1610 ATC	2308000216W	HA+BH or BGA ⇨4
J4202	BTB CONN ASE5S3010 ATC	2308000312W	HA+BH or BGA ⇨5
J4101	BTB CONN BM20B(0.8)-40DS-0.4V(51) HRS	23080007Y00	HA+BH or BGA ⇨6
J4201	BTB CONN BB35-RD34-3A-D8 DDK	23080002J00	HA+BH or BGA ⇨7
FJP3101	COAX CONN 3.2.08.0113 JTCONN	23350000R00	HA+BH ⇨8
FJP3102	COAX CONN 3.2.08.0113 JTCONN	23350000R00	HA+BH ⇨8
D2201	LED LTPL-C0677WPNB-CC2 LITEON	17700002Z00	HA+BH ⇨9
GP3401	SPR CONN 3.1.29.0582 JTCONN	23130003W00	HA+BH ⇨10
GP3402	SPR CONN 3.1.29.0582 JTCONN	23130003W00	HA+BH ⇨10
ANT3304	SPR CONN TM010-307 JTCONN	2313000161W	HA+BH ⇨11
ANT3305	SPR CONN TM010-307 JTCONN	2313000161W	HA+BH ⇨11
GNDSPR2	SPR CONN TM010-307 JTCONN	2313000161W	HA+BH ⇨12
PAD3201	SPR CONN TM010-307 JTCONN	2313000161W	HA+BH ⇨13
PAD3204	SPR CONN TM010-307 JTCONN	2313000161W	HA+BH ⇨13

## 2 Tools

### SPECIAL TOOLS

1. PBA Soldering Fixture (1315-7156)



### STANDARD TOOLS

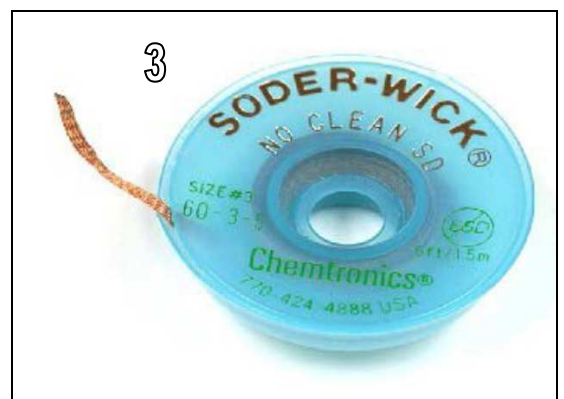
1. Small Convection (Hot Air) Device



2. Soldering Iron



3. Soldering wick



### 4. Solder-wire



### 5. Solder-paste



### 6. Low Static Heat Protection Tape

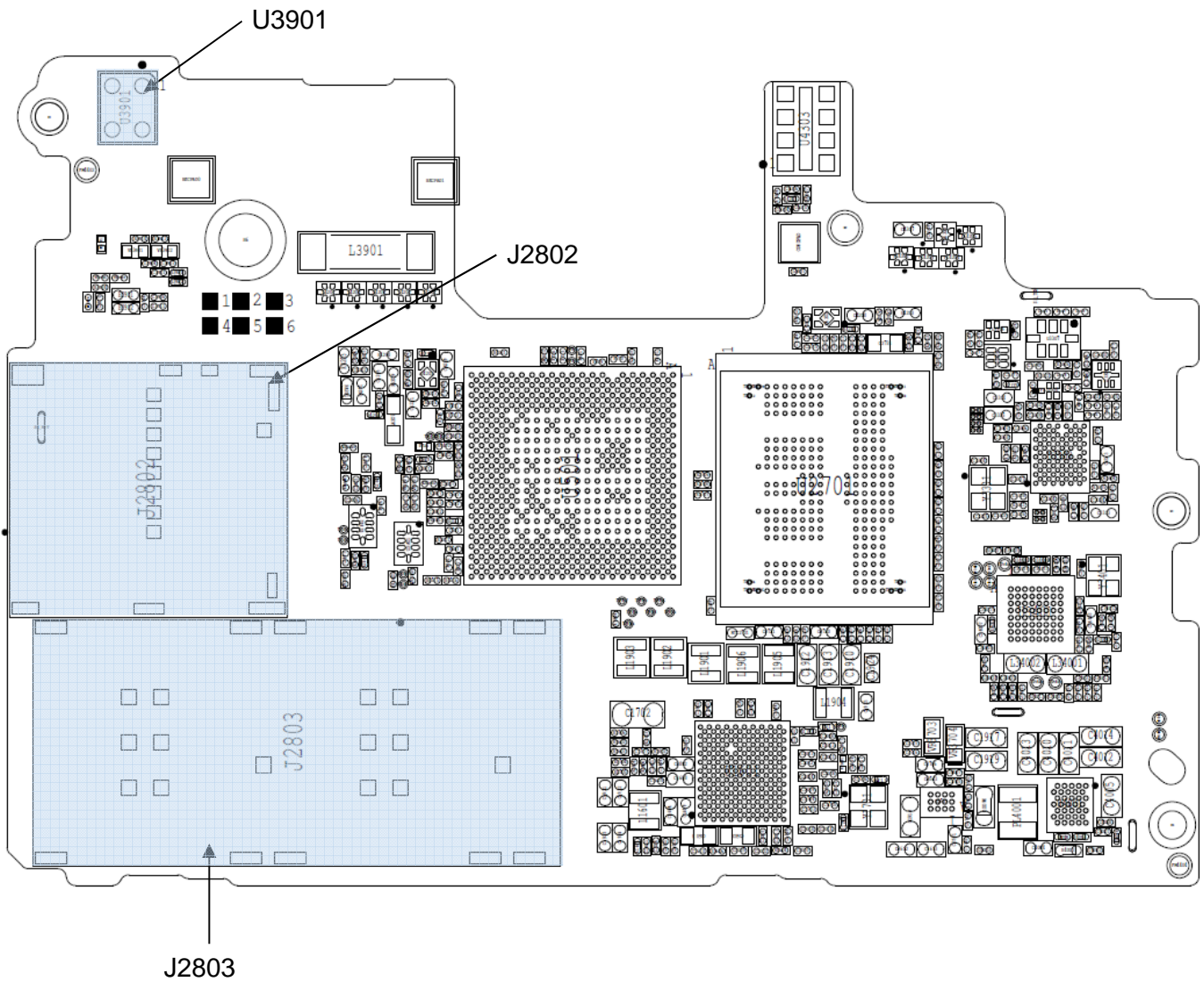


### 7. Flux



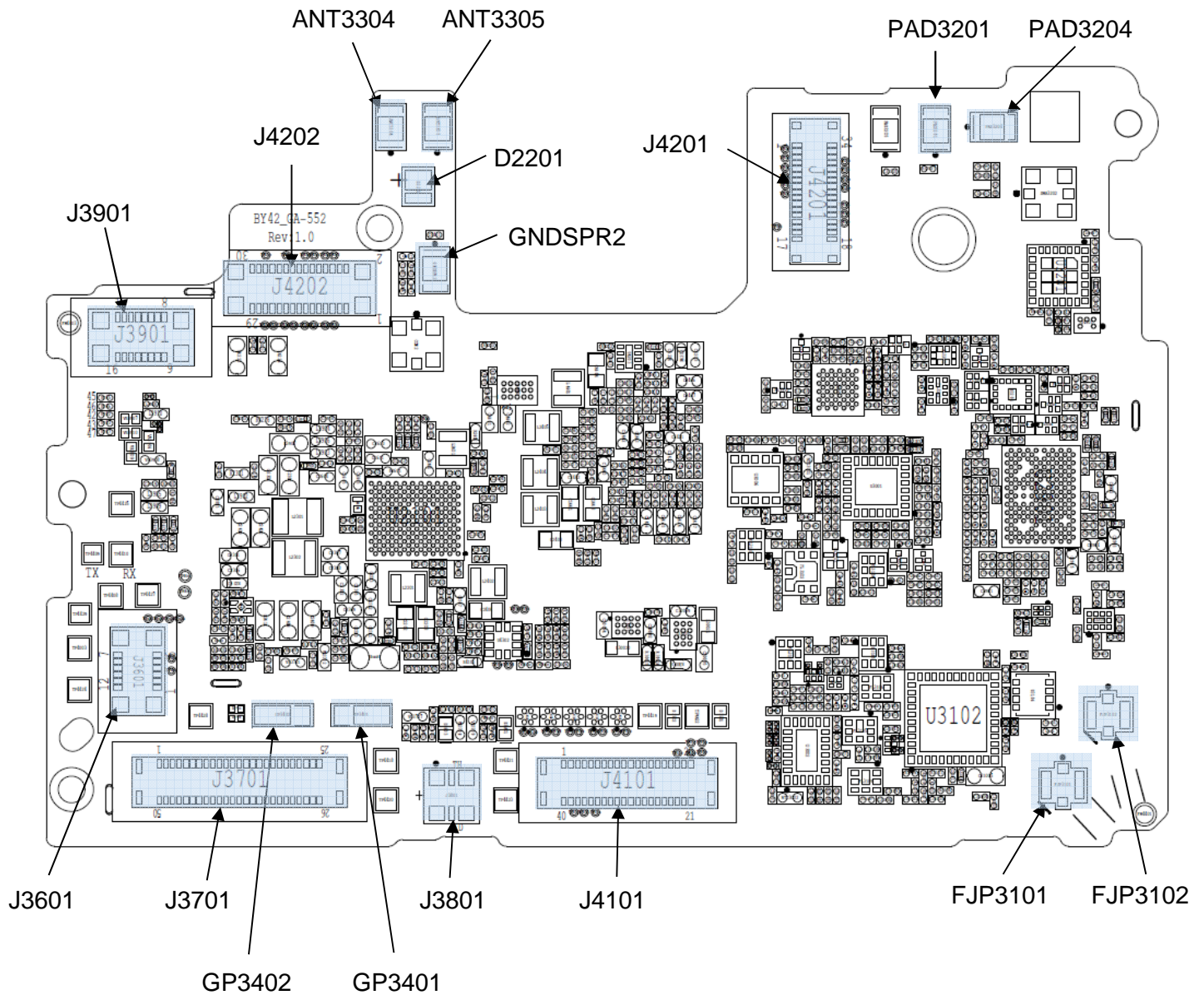
## 3 Component Placing

Primary side



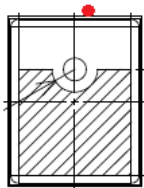
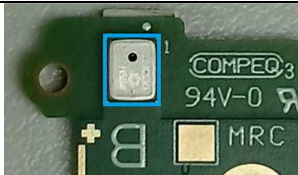
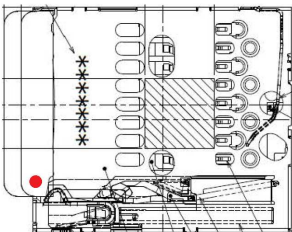
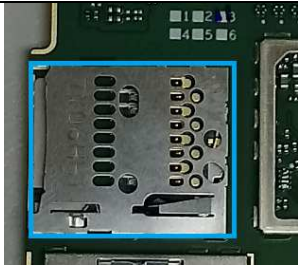
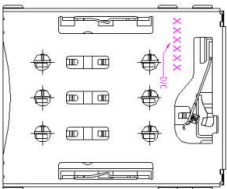
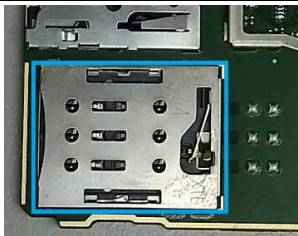
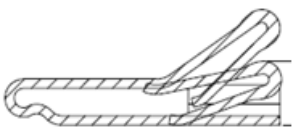
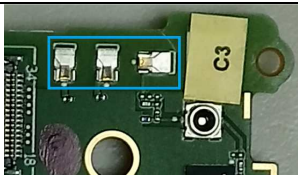
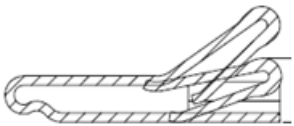
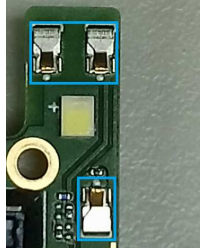
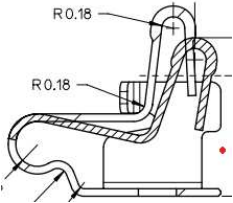
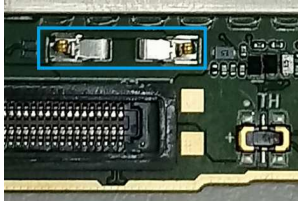


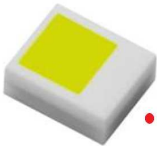
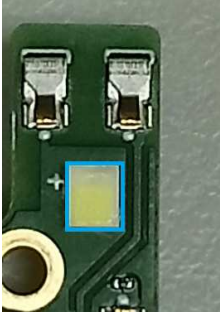
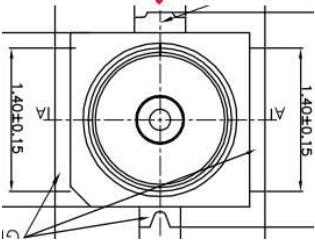
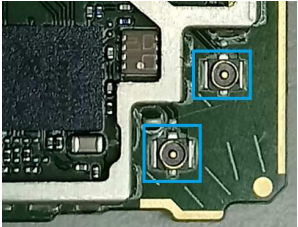
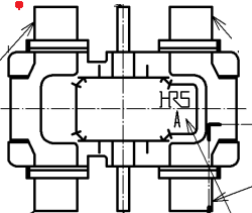
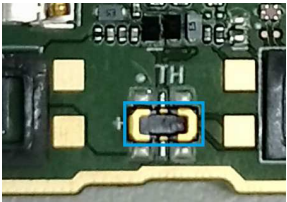
## Secondary side





**The Component direction is shown by using red point.**

Position	PBA drawing	PBA picture
U3901		
J2802		
J2803		
PAD3201 PAD3204		
ANT3304 ANT3305 GNDSPR2		
GP3402,GP3401		

D2201		
FJP3102,FJP3101		
J3801		

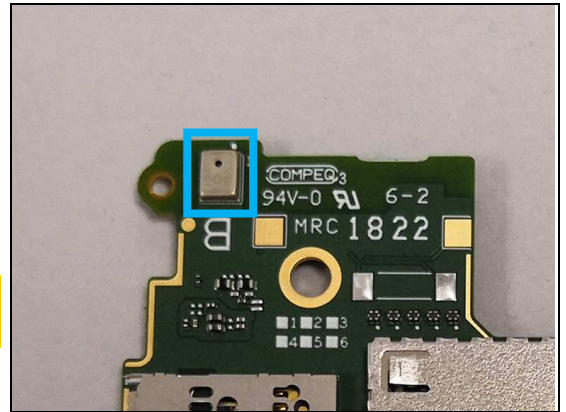
## 4 Additional Repair info

### 4.1 Primary Side

1

U3901

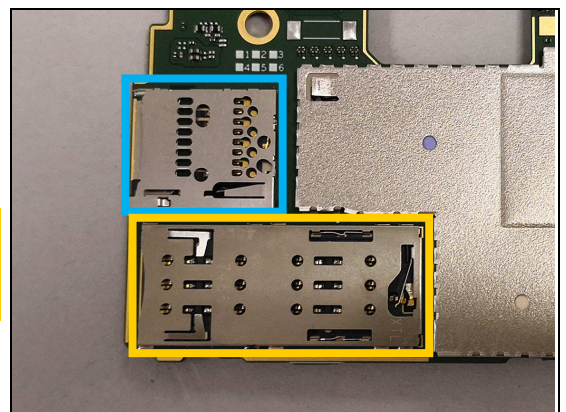
**Replace if mechanical damaged.**  
**(2nd MIC not working)**



2

J2802

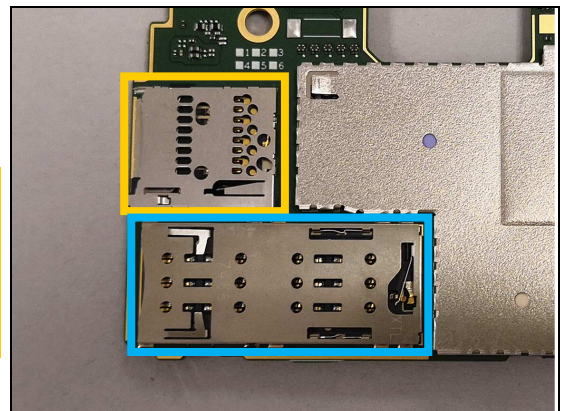
**Replace if mechanical damaged.**  
**(No SD card inserted)**  
**Protect the SIM connector with capton tape!**



3

J2803

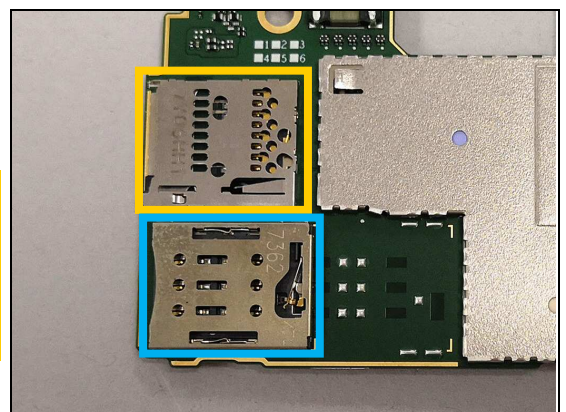
**Replace if mechanical damaged.**  
**(No SIM1 or SIM2 card inserted)**  
**Protect the SD connector with capton tape!**  
  
**This is only applicable for H4413 and H4493.**



4

J2803

**Replace if mechanical damaged.**  
**(No SIM card inserted )**  
**Protect the SD connector with capton tape!**  
  
**This is only applicable for H3413.**





### 4.2 Secondary Side

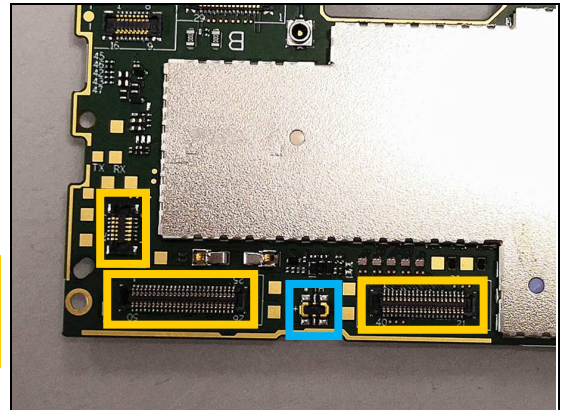
1

J3801

**Replace if mechanical damaged.**

**(Phone dead or power off)**

**Protect the BtB connectors with capton tape!**



2

J3701

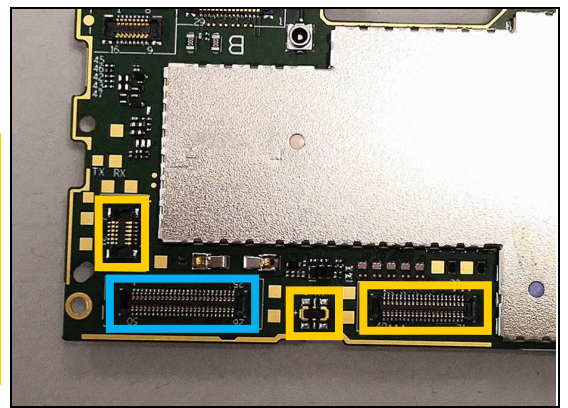
**Replace if mechanical damaged.**

**(Cannot Charge/ USB**

**data transfer error / Main mic not working /**

**Loudspeaker no sound / Keys not working properly and related symptoms)**

**Protect the Battery and BtB connectors with capton tape!**



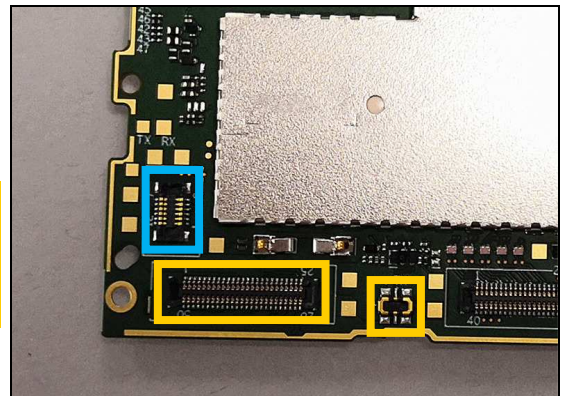
3

J3601

**Replace if mechanical damaged.**

**(Finger print not working)**

**Protect the Battery and BtB connectors with capton tape!**



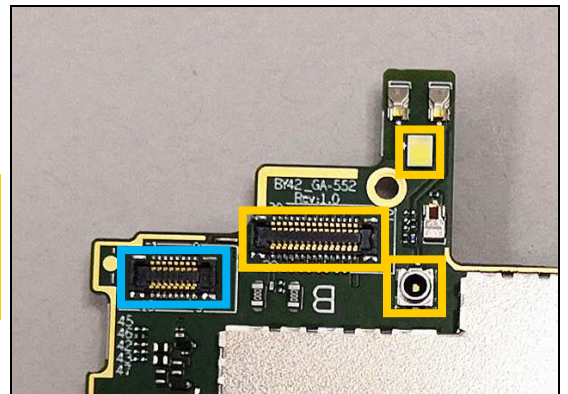
4

J3901

**Replace if mechanical damaged.**

**(No sound from headset / No FM radio)**

**Protect the RF switch, LED and BtB connectors with capton tape!**



## Repair Actions: Additional Repair Info

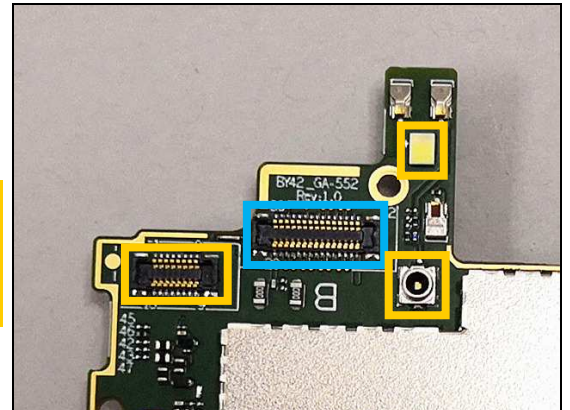
5

J4202

**Replace if mechanical damaged.**

**(Front camera not working properly)**

**Protect the RF switch, LED and BtB connectors with capton tape!**



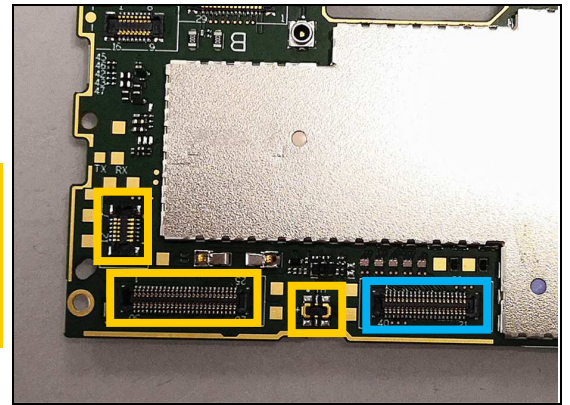
6

J4101

**Replace if mechanical damaged.**

**(Display abnormal or touch panel related symptoms)**

**Protect the Battery and BtB connectors with capton tape!**



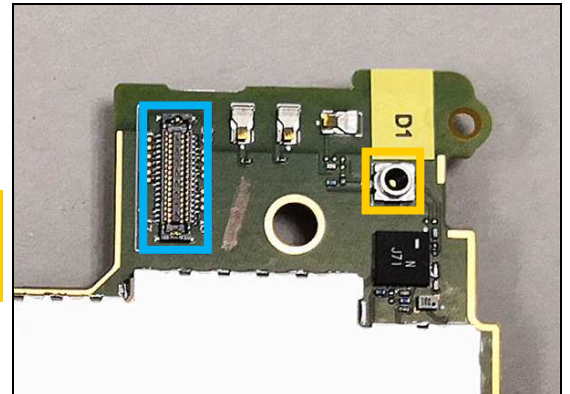
7

J4201

**Replace if mechanical damaged.**

**(Main camera not working properly)**

**Protect the RF switches with capton tape!**



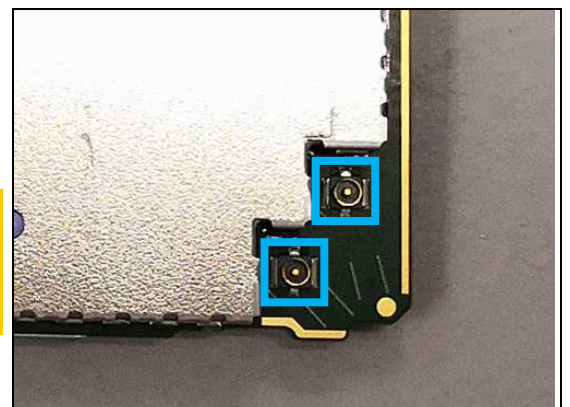
8

FJP3101, FJP3102

**Replace if mechanical damaged.**

**(Bad network, Main antenna)**

**Protect the other RF connector with capton tape if only replace one of them!**



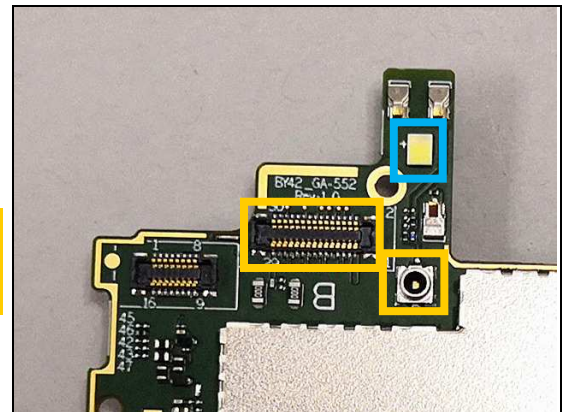


## Repair Actions: Additional Repair Info

9

D2201

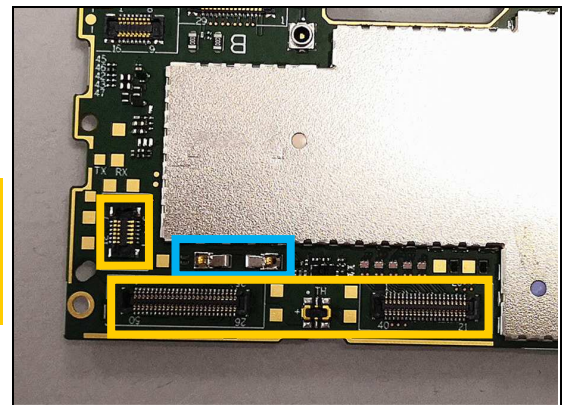
**Replace if Flash LED not working.**  
**Protect the BtB connector and RF switch with capton tape!**



10

GP3401, GP3402

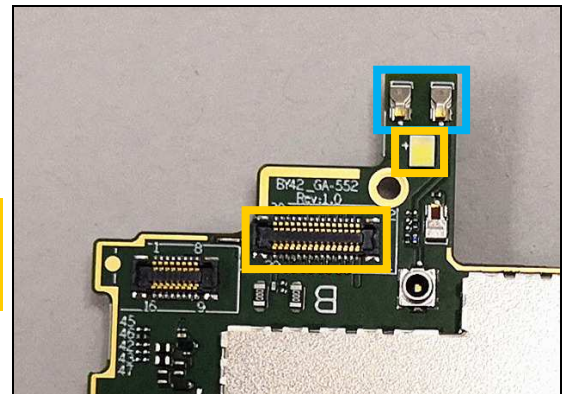
**Replace if mechanical damaged.**  
**(No or bad NFC)**  
**Protect the Battery and BtB connectors with capton tape!**



11

ANT3304, ANT3305

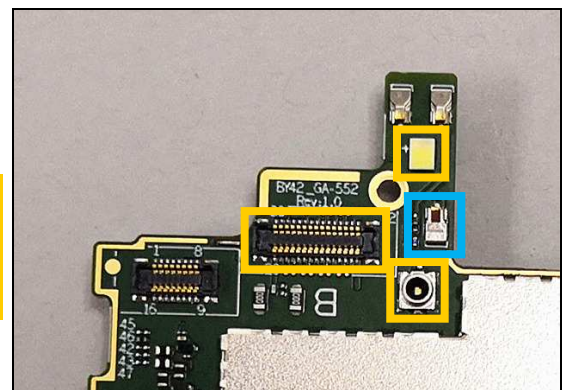
**Replace if mechanical damaged.**  
**(No or bad WLAN/ BT/ GPS)**  
**Protect the LED and BtB connector with capton tape!**



12

GNDSR2

**Replace if mechanical damaged.**  
**(No or bad WLAN/ BT/ GPS)**  
**Protect the LED, BtB connector and RF switch with capton tape!**



## Repair Actions: Additional Repair Info

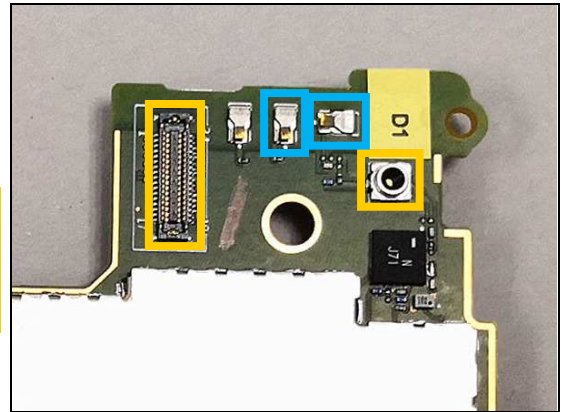
13

PAD3201, PAD3204

*Replace if mechanical damaged.*

*(Bad network, diversity Rx antenna)*

*Protect the RF switch and BtB connector with capton tape!*





## 5 Revision History

Rev.	Date	Changes / Comments
1	2018-Aug-16	Initial release