

## Component Replacement - electrical -



**Xperia™ XZ2**

**H8216, H8276, H8266, 8296**

## CONTENTS

1	Replaceable Components .....	2
2	Tool 4	
3	Component Placing.....	6
4	Additional Repair Info .....	8
5	Revision History .....	10

*Baking prior to repair is required, if the board have been exposed to air more than 12 hours from PWB package opening. Too long exposure time increase the level of moisture in PWB and the PWB could delaminate during repair process and result in direct or latent failures and reduce reliability.*

*The boards shall be baked in 125°C ±5°C for 4 hours.*

*All Electrical components are RLC (Reversed Logistic Classification) level C, refer to the 3.4 Valid Spare Parts chapter in the Warranty Claim Instruction RE4249 about disposition of the parts.*

*Test after component replacement to refer to the 1315-2183 H8216/H8276/H8266/H8296 Test Instructions - mechanical -.*

*Do not remove shield can lids (RF performance will be damaged).*

*If there are components located on right next to the component that intend to replace, protect those components with Kapton tape to avoid damages.*

## 1 Replaceable Components

### EXPLANATION OF ABBREVIATIONS USED IN THE COLUMN 'COMMENTS' BELOW

#### REPAIR METHOD

**HA** = Hot Air (removal & mounting)

**ST** = Soldering Tool (removal & mounting)

**HA/ST** = Hot Air for removal - Soldering Tool for mounting

**BGA** = BGA Station

**BH** = Bottom Heater

#### ADDITIONAL INFORMATION

⇒1 (2, 3, 4, etc.) = Proceed to 'Additional Repair Info' for further instructions in the indicated section(s).

### Primary Side

Position	Component	Part no.	Comments
CN4725	Conn Coax Receptacle 1p	1299-1838	HA+BH
CN4730	Conn Coax Receptacle 1p	1299-1838	HA+BH
CN4633	Conn Leaf Spring Plug 1p	1294-8905	HA+BH

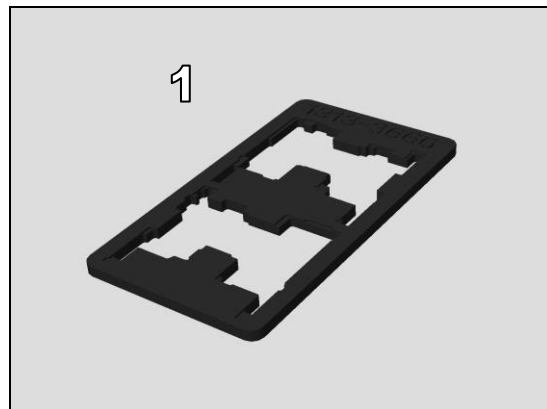
### Secondary Side

Position	Component	Part no.	Comments
CN1350	Conn Leaf Spring Plug 1p	1294-8905	HA+BH
CN1351	Conn Leaf Spring Plug 1p	1294-8905	HA+BH
CN4625	Conn Leaf Spring Plug 1p	1294-8905	HA+BH
CN4626	Conn Leaf Spring Plug 1p	1294-8905	HA+BH
CN4631	Conn Leaf Spring Plug 1p	1294-8905	HA+BH
CN4690	Conn Leaf Spring Plug 1p	1294-8905	HA+BH
CN4710	Conn Leaf Spring Plug 1p	1294-8905	HA+BH
CN4715	Conn Leaf Spring Plug 1p	1294-8905	HA+BH
CN4720	Conn Leaf Spring Plug 1p	1294-8905	HA+BH
CN4721	Conn Leaf Spring Plug 1p	1294-8905	HA+BH
CN4722	Conn Leaf Spring Plug 1p	1294-8905	HA+BH
CN4740	Conn Leaf Spring Plug 1p	1294-8905	HA+BH
CN4745	Conn Leaf Spring Plug 1p	1294-8905	HA+BH
CN4750	Conn Leaf Spring Plug 1p	1294-8905	HA+BH
CN4755	Conn Leaf Spring Plug 1p	1294-8905	HA+BH
CN4756	Conn Leaf Spring Plug 1p	1294-8905	HA+BH
CN4782	Conn Leaf Spring Plug 1p	1294-8905	HA+BH

## 2 Tool

### SPECIAL TOOL

1. PBA Soldering Fixture (1313-3660)



### STANDARD TOOLS

1. Small Convection (Hot Air) Device



2. Soldering Iron



3. Soldering wick



4. Solder-wire



5. Solder-paste



6. Low Static Heat Protection Tape



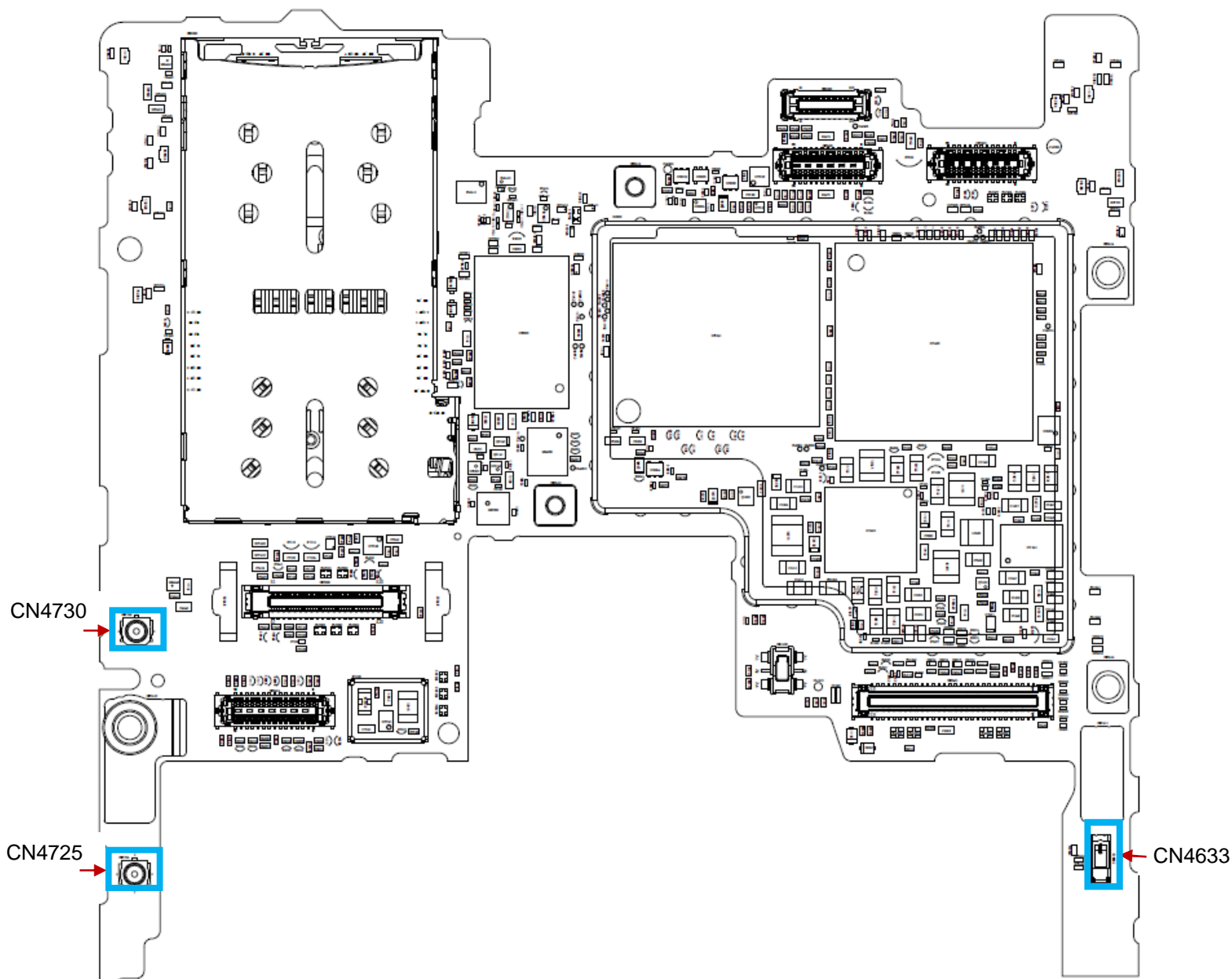
7. Flux



**Refer to the 1003-9107 Tools Catalogue for detail of standard tools.**

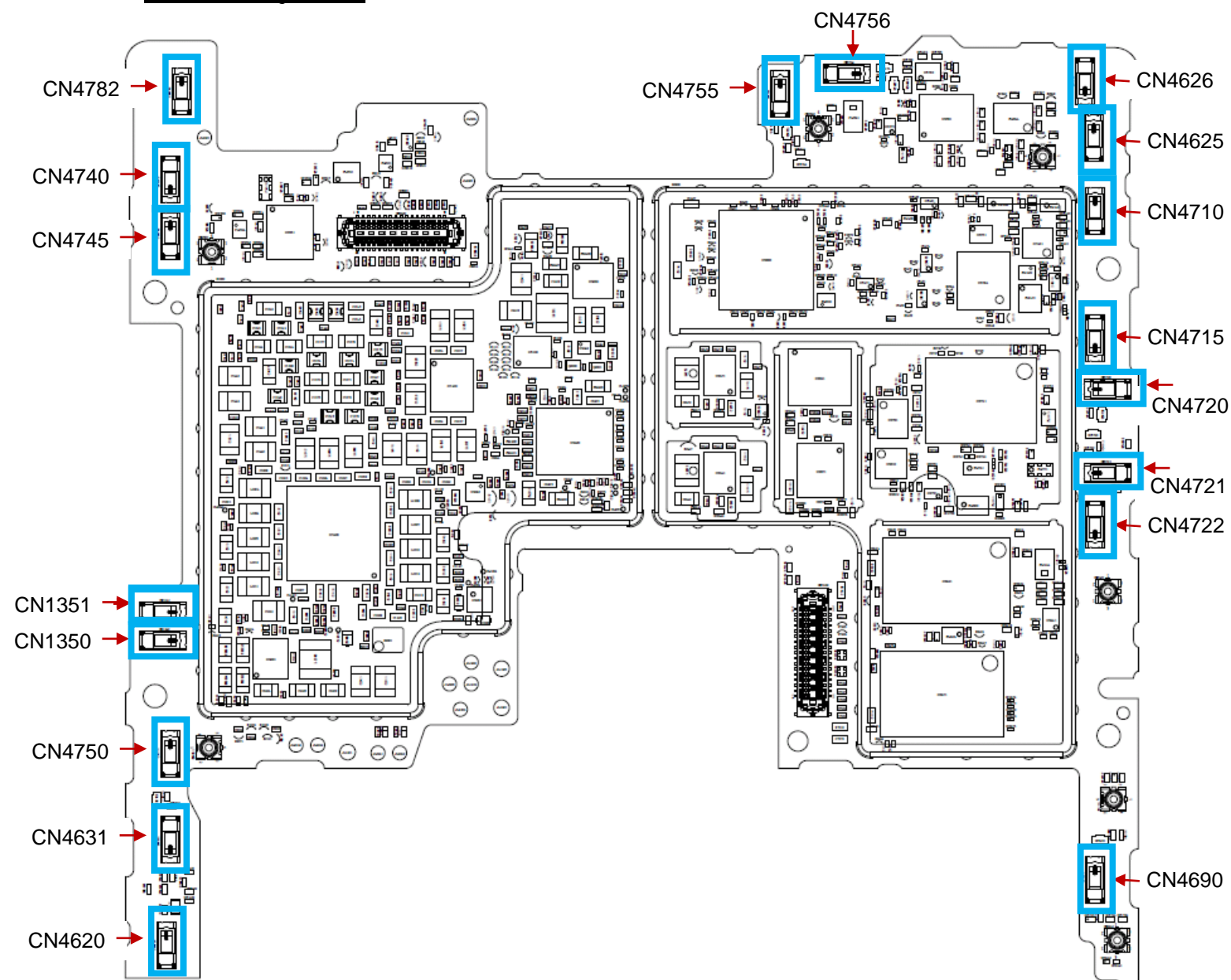
## 3 Component Placing

### Primary Side



## Component Placing

### Secondary Side



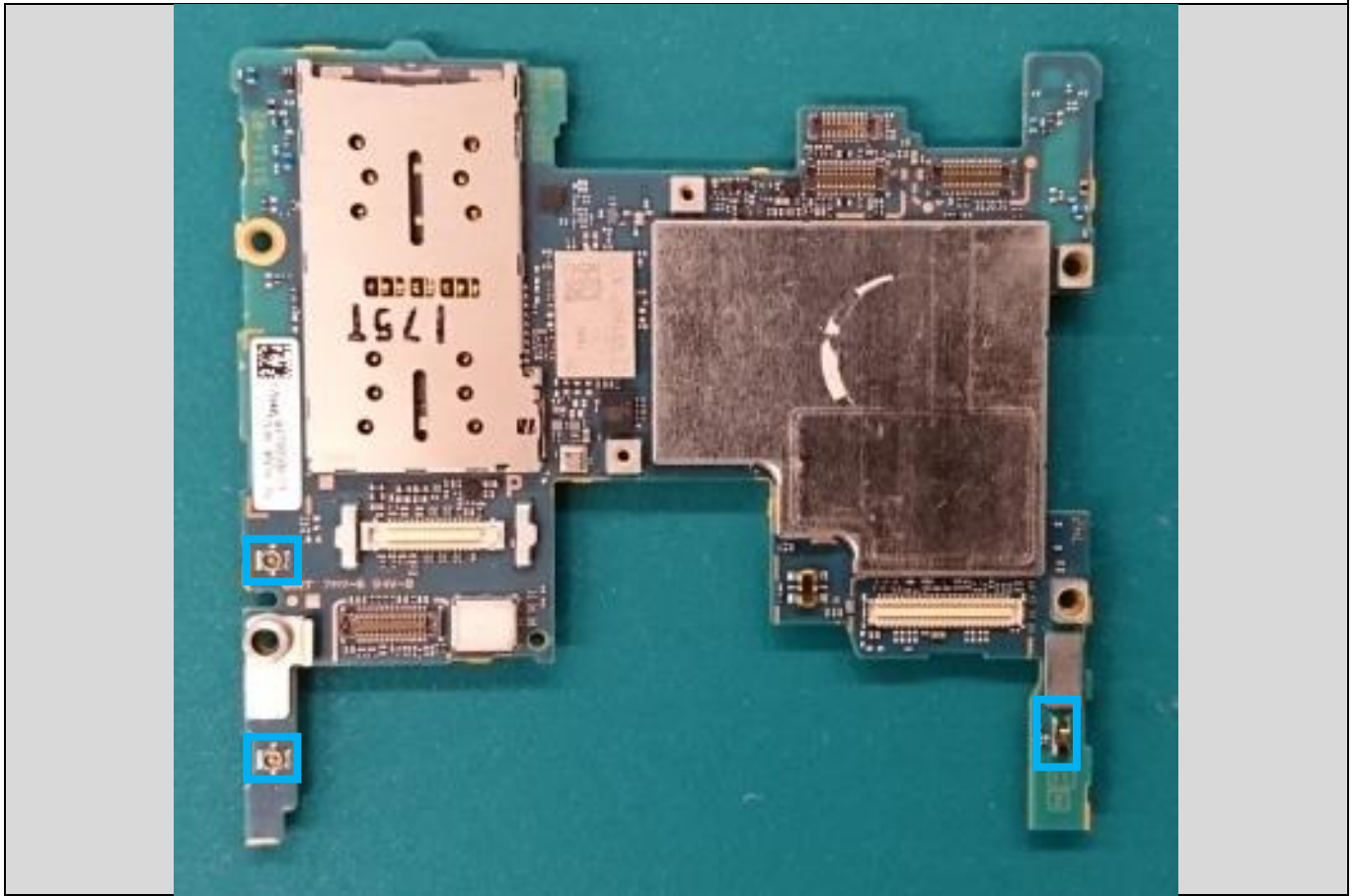


## 4 Additional Repair Info

### Primary Side 1

CN4633,CN4725,CN4730

**Replace if mechanical damaged (No or bad network, antenna).**



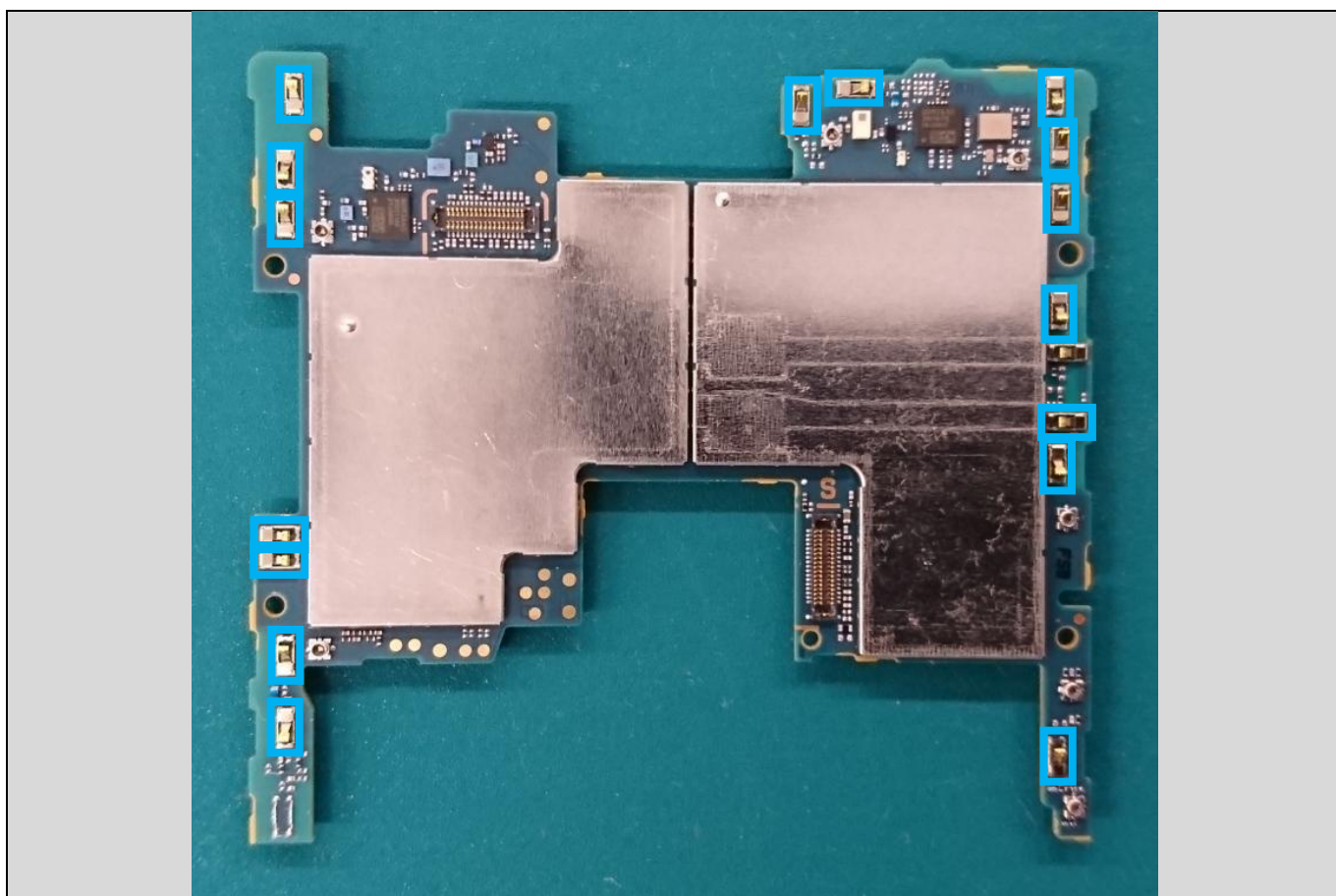


## Additional Repair Info

### Secondary Side 1

CN1350,CN1351,CN4625,CN4626,CN4631,CN4690,CN4710,CN4715,CN4720,CN4721,CN4722  
CN4740,CN4745,CN4750,CN4755,CN4756,CN4782

**Replace if mechanical damaged (No or bad network, antenna).**



## 5 Revision History

Rev.	Date	Changes / Comments
1	2018-Mar-9	Initial release