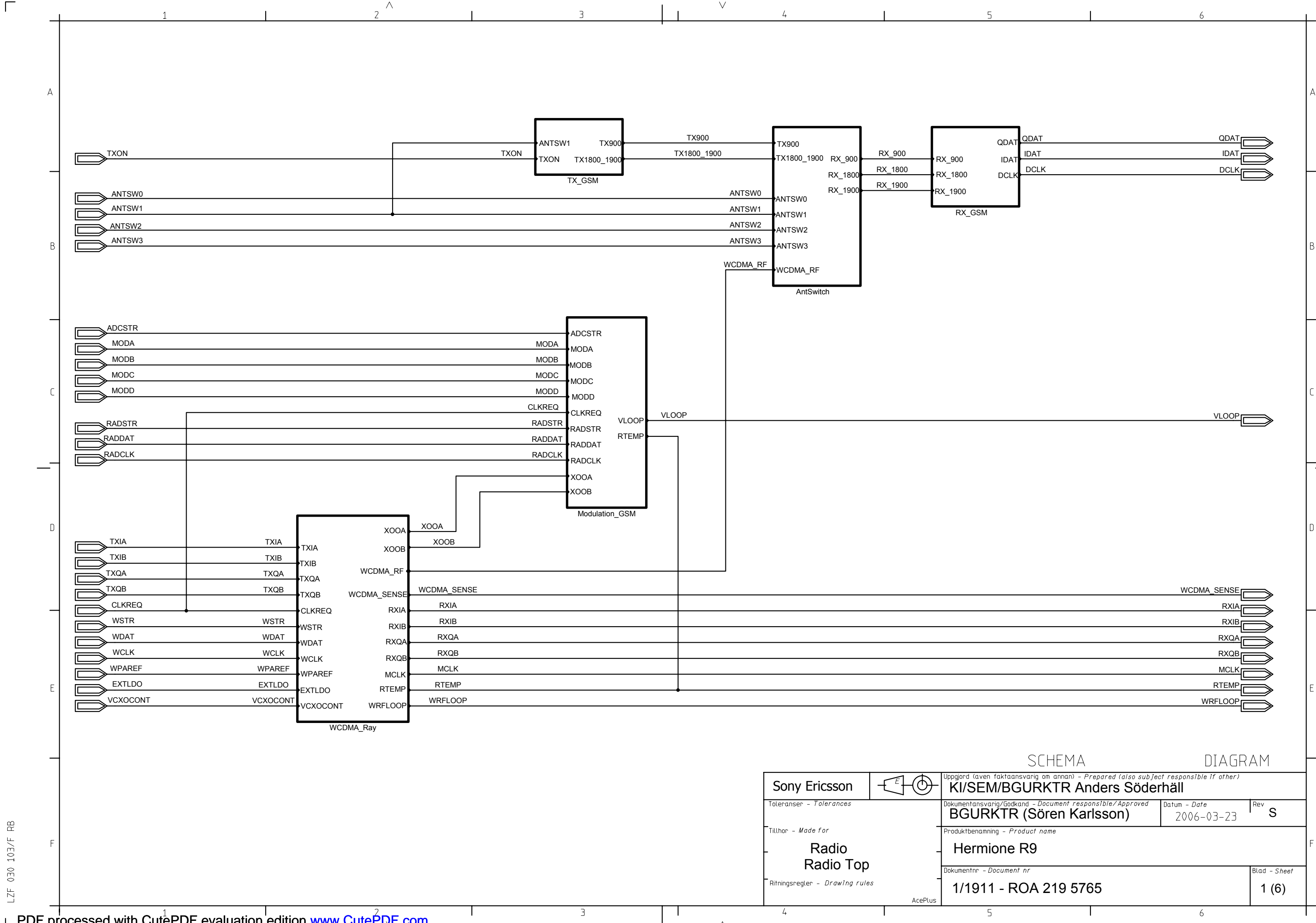
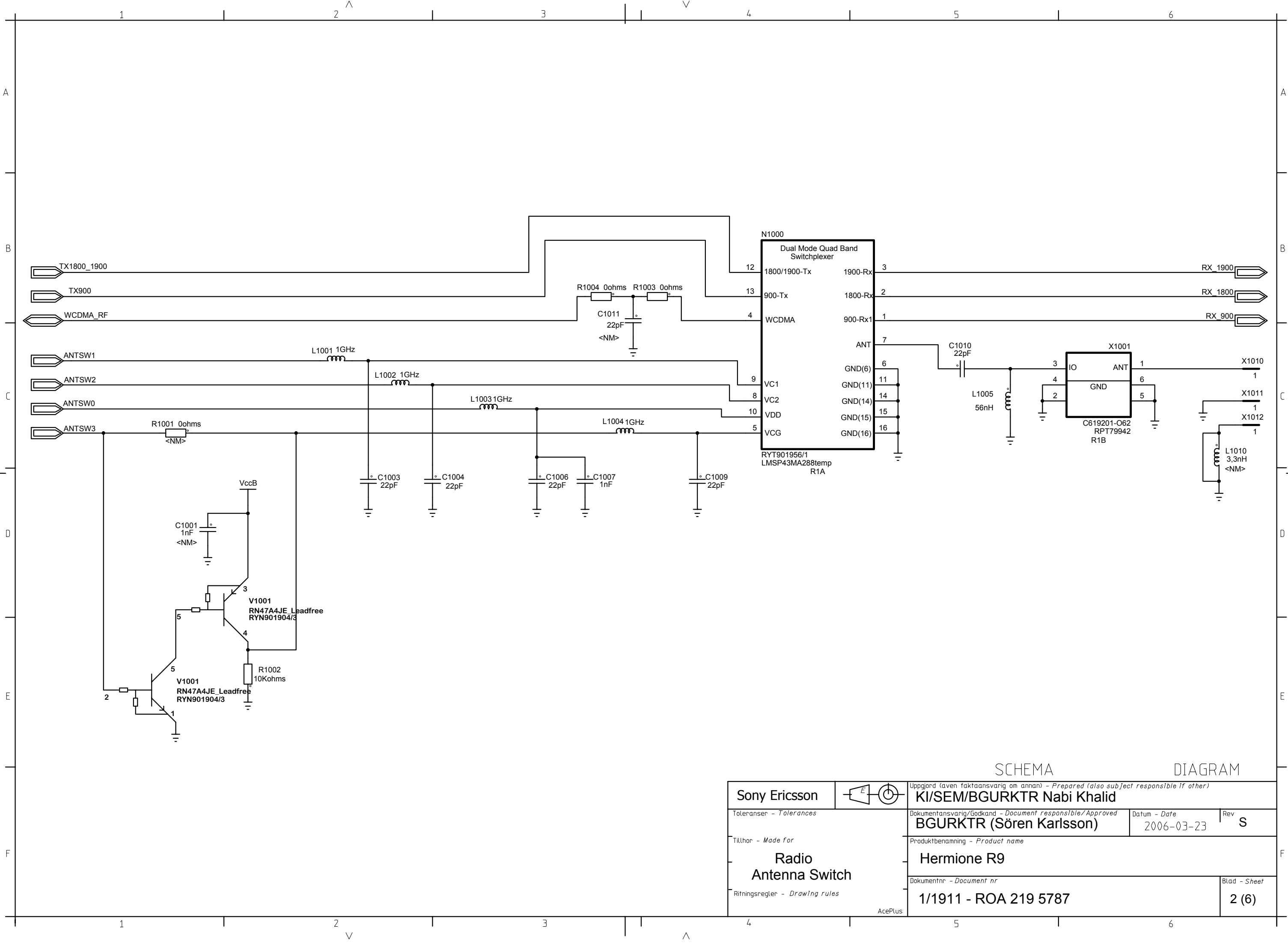


LZF 030 103/F RB



LZF 030 103/F RB

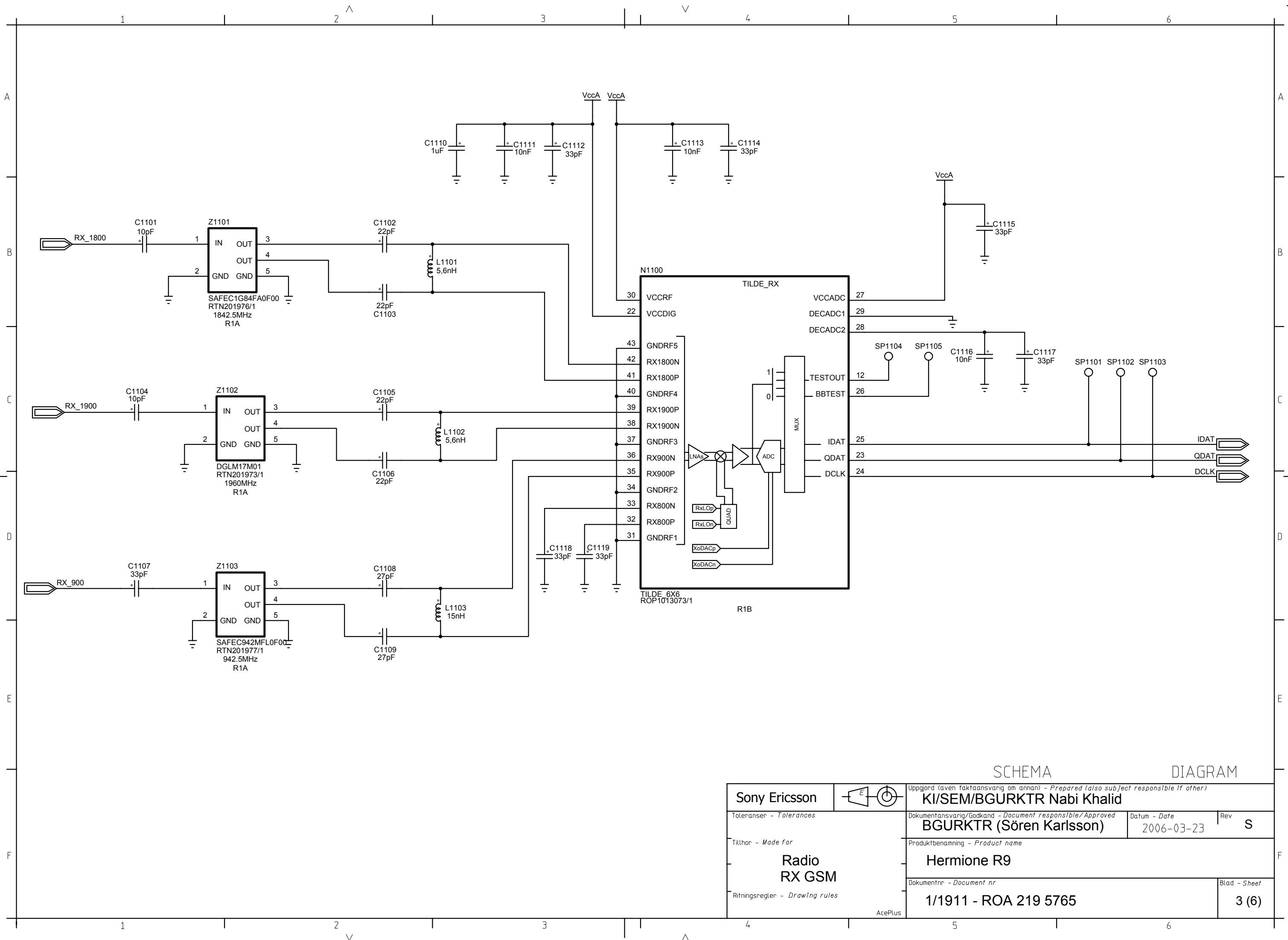


SCHEMA

DIAGRAM

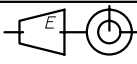
Sony Ericsson		Uppgjord (även faktaansvarig om annan) - Prepared (also subject responsible if other)	
Tillhör - Made for		KI/SEM/BGURKTR Nabi Khalid	
Tillhör - Made for		Dokumentansvarig/Godkänd - Document responsible/Approved	Datum - Date
Radio Antenna Switch		BGURKTR (Sören Karlsson)	2006-03-23
Ritningsregler - Drawing rules		Produktbenämning - Product name	Rev S
		Dokumentnr - Document nr	Blad - Sheet
		1/1911 - ROA 219 5787	2 (6)

AcePlus

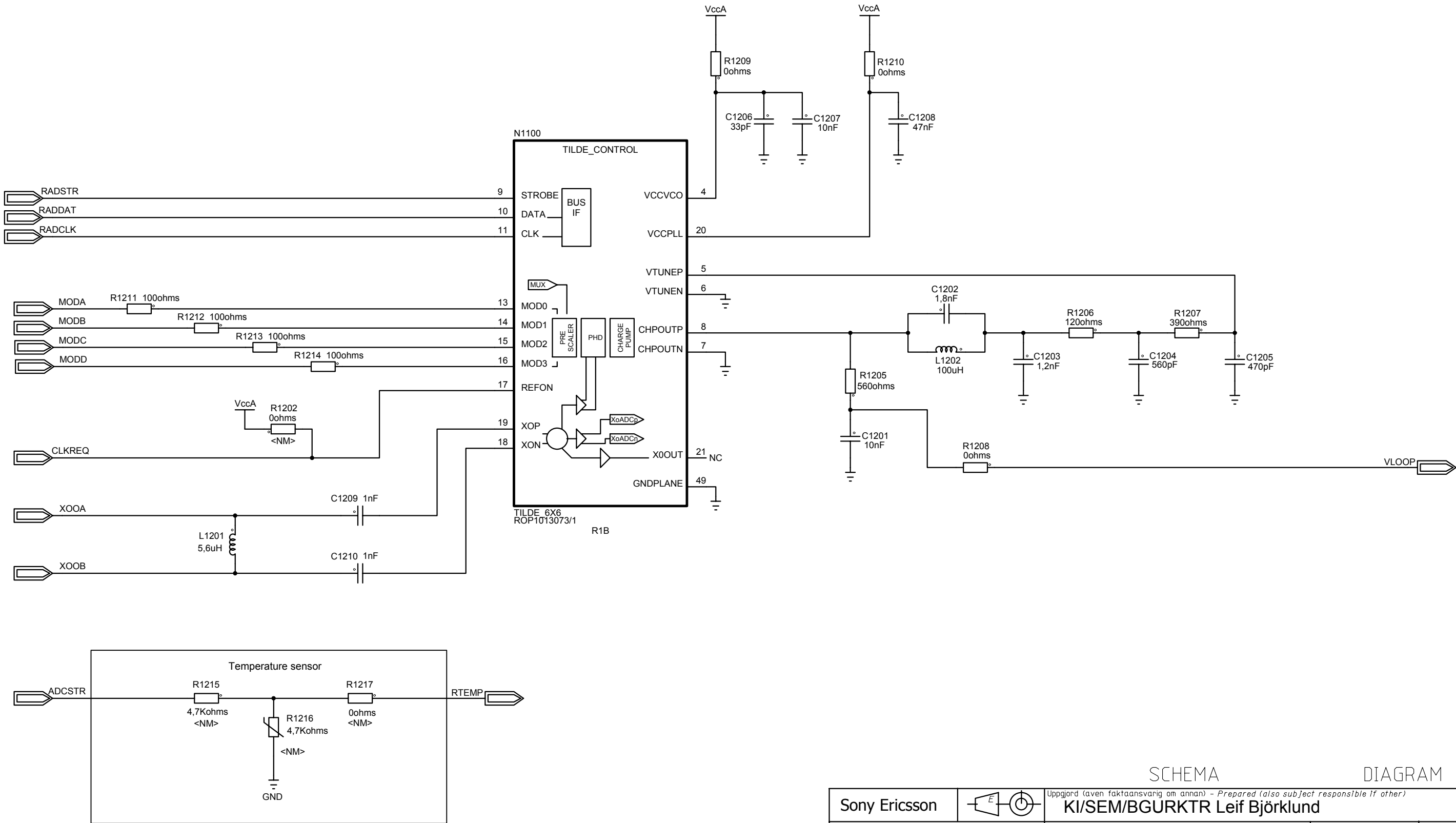


SCHEMA

DIAGRAM

Sony Ericsson			Uppgjord (även faktaansvarig om annan) - Prepared (also subject responsible if other)	
			KI/SEM/BGURKTR Nabi Khalid	
	Toleranser - Tolerances		Dokumentansvarig/Godkänd - Document responsible/Approved	Datum - Date
			BGURKTR (Sören Karlsson)	2006-03-23
Tillhör - Made for			Rev S	
			Produktbenämning - Product name	
			Hermione R9	
Ritningsregler - Drawing rules			Dokumentnr - Document nr	Blad - Sheet
			1/1911 - ROA 219 5765	3 (6)

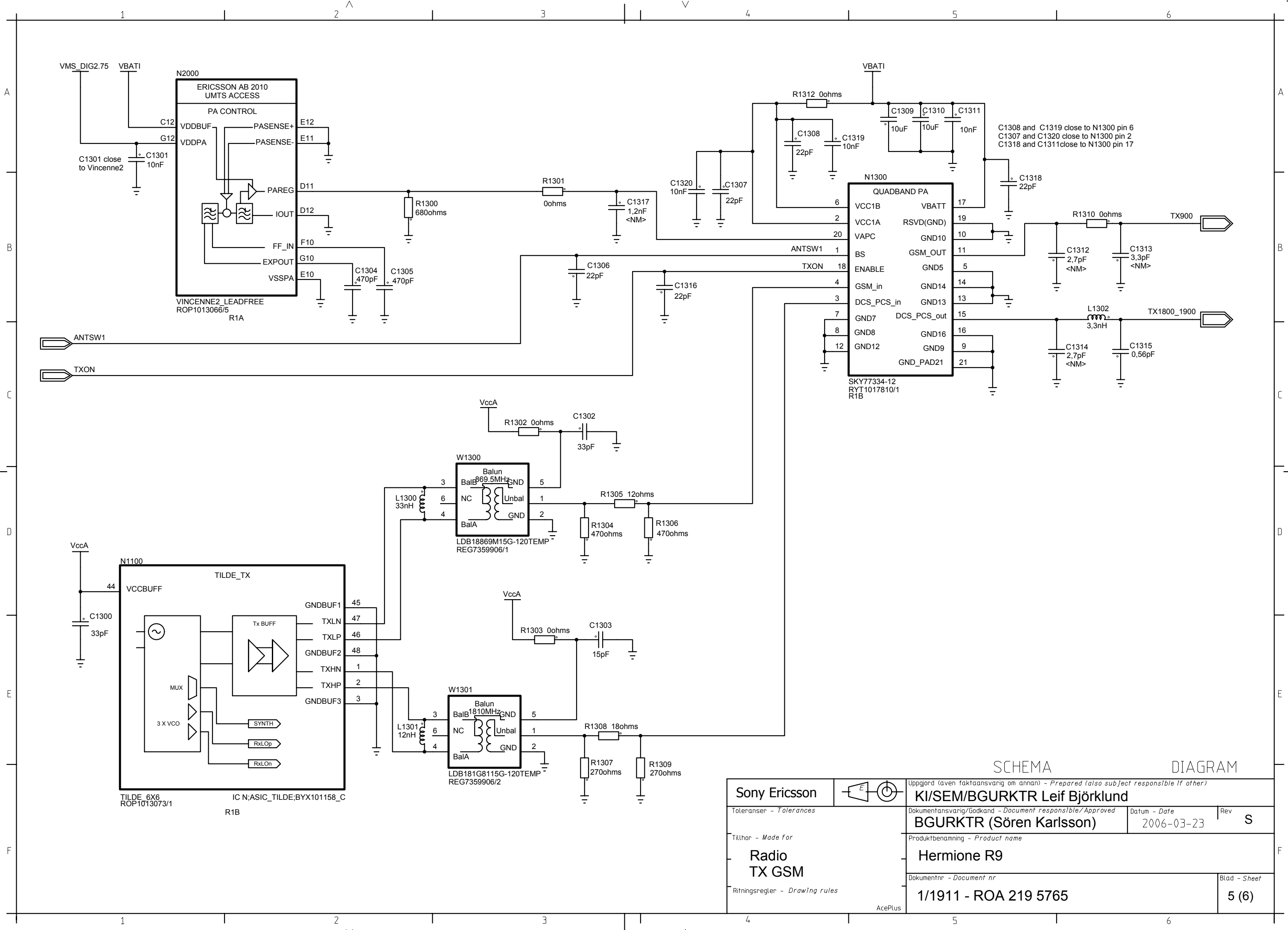
LZF 030 103/F RB



SCHEMA

DIAGRAM

Sony Ericsson		Uppgjord (även faktaansvarig om annan) - Prepared (also subject responsible if other)	
Toleranser - Tolerances		KI/SEM/BGURKTR Leif Björklund	
Tillhör - Made for		Dokumentansvarig/Godkänd - Document responsible/Approved	Datum - Date
Radio Modulation GSM		BGURKTR (Sören Karlsson)	2006-03-23
		Rev	S
Ritningsregler - Drawing rules		Produktbenämning - Product name	
AcePlus		Hermione R9	
		Dokumentnr - Document nr	Blad - Sheet
		1/1911 - ROA 219 5765	4 (6)



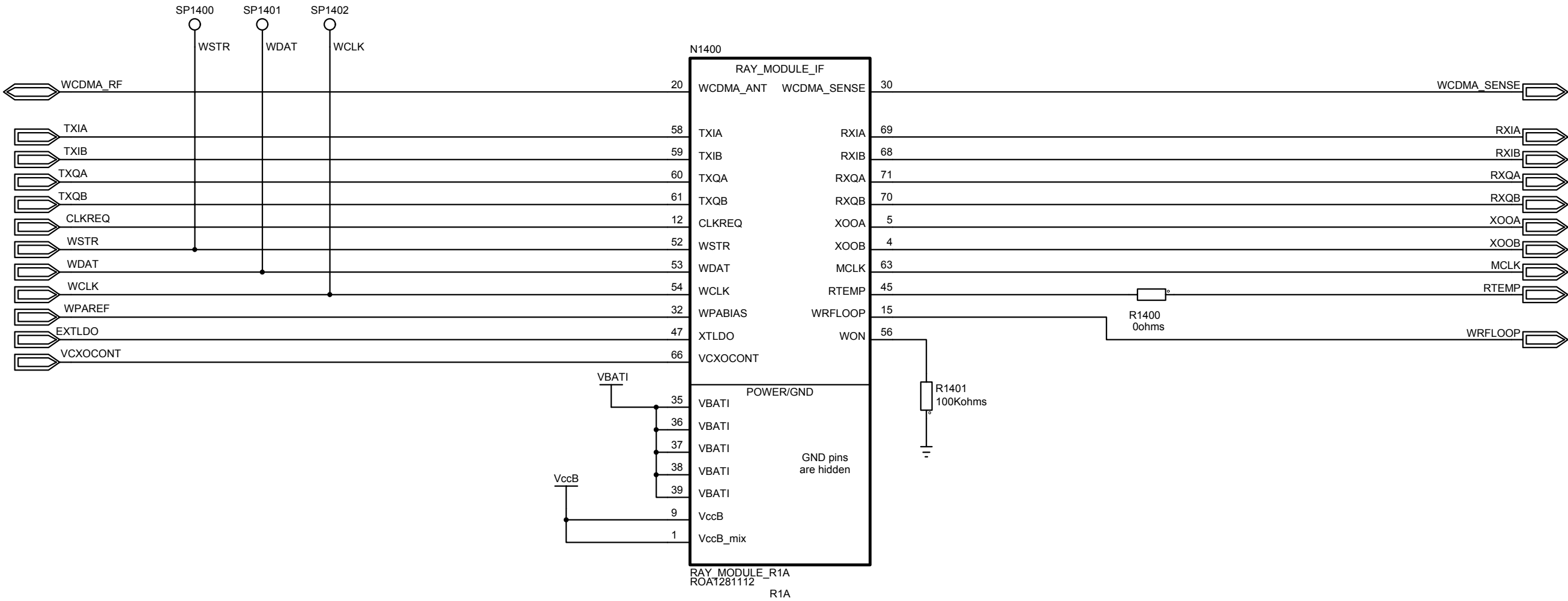
SCHEMA

DIAGRAM

Sony Ericsson		Uppgjord (även faktaansvarig om annan) - Prepared (also subject responsible if other)	
Toleranser - Tolerances		KI/SEM/BGURKTR Leif Björklund	
Tillhör - Made for		Dokumentansvarig/Godkänd - Document responsible/Approved	Datum - Date
Radio TX GSM		BGURKTR (Sören Karlsson)	2006-03-23
		Rev S	
Ritningsregler - Drawing rules		Produktbenämning - Product name	
AcePlus		Hermione R9	
		Dokumentnr - Document nr	Blad - Sheet
		1/1911 - ROA 219 5765	5 (6)

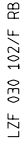
LZF 030 103/F RB

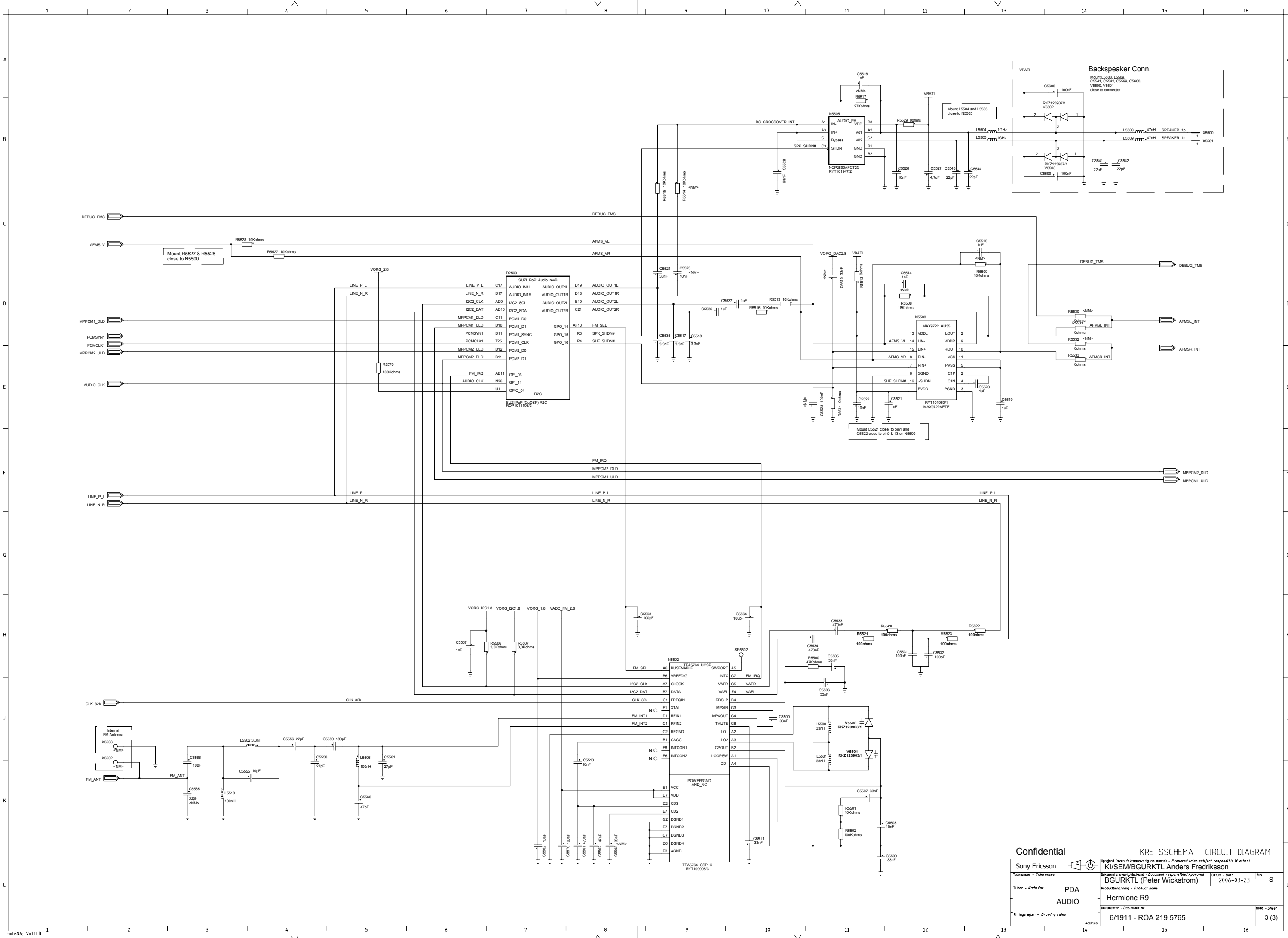
LZF 030 103/F RB



SCHEMA DIAGRAM

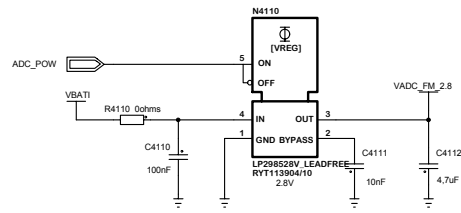
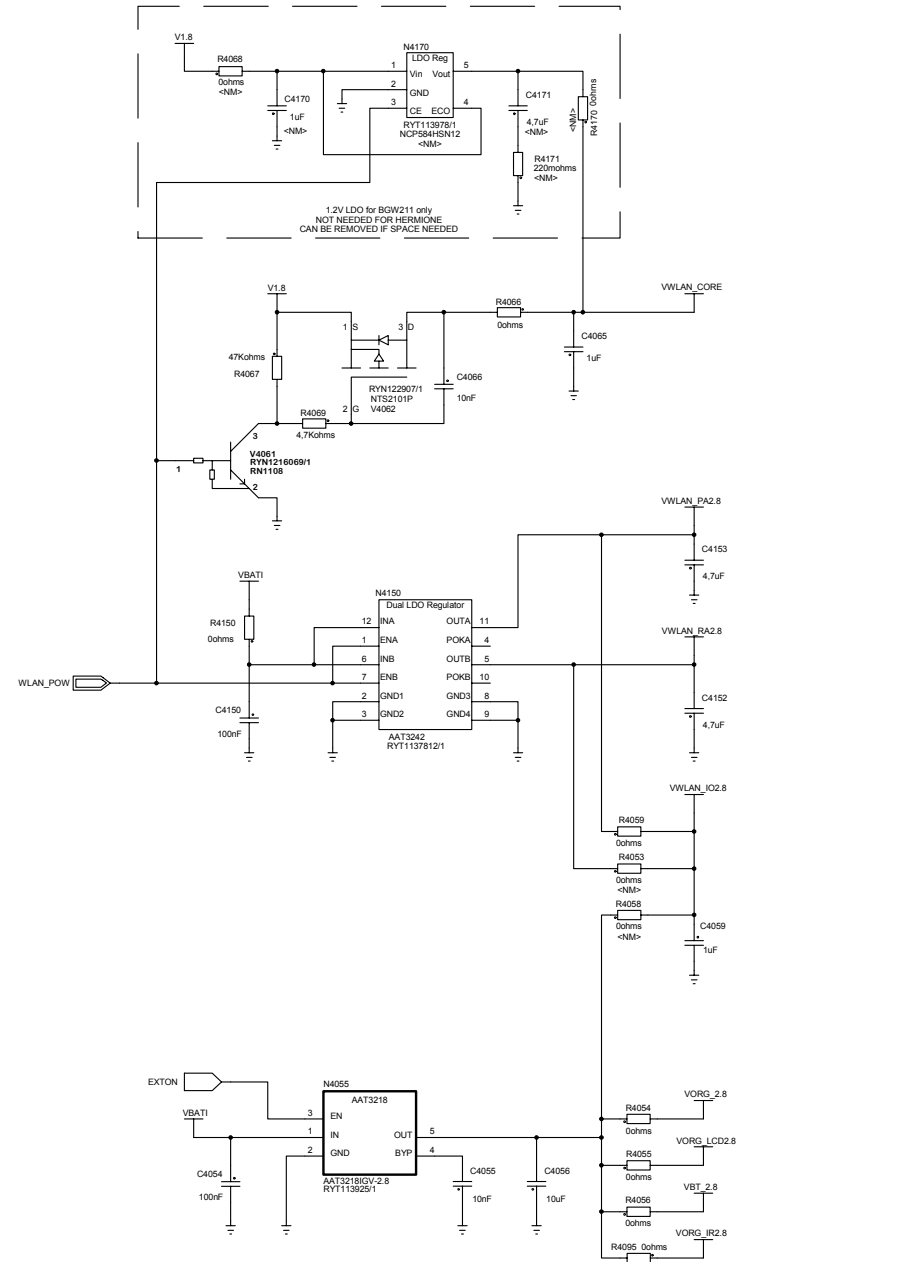
Sony Ericsson		Uppgjord (även faktaansvarig om annan) - Prepared (also subject responsible if other)	
		KI/SEM/BGURKTR Zareh Mahdessian, Håkan Quilisch	
Toleranser - Tolerances		Dokumentansvarig/Godkand - Document responsible/Approved	Datum - Date
		BGURKTR (Sören Karlsson)	2006-03-23
Tillhör - Made for		Rev S	
		Produktbenämning - Product name	
		Hermione R9	
Ritningsregler - Drawing rules		Dokumentnr - Document nr	Blad - Sheet
		1/1911 - ROA 219 5765	6 (6)



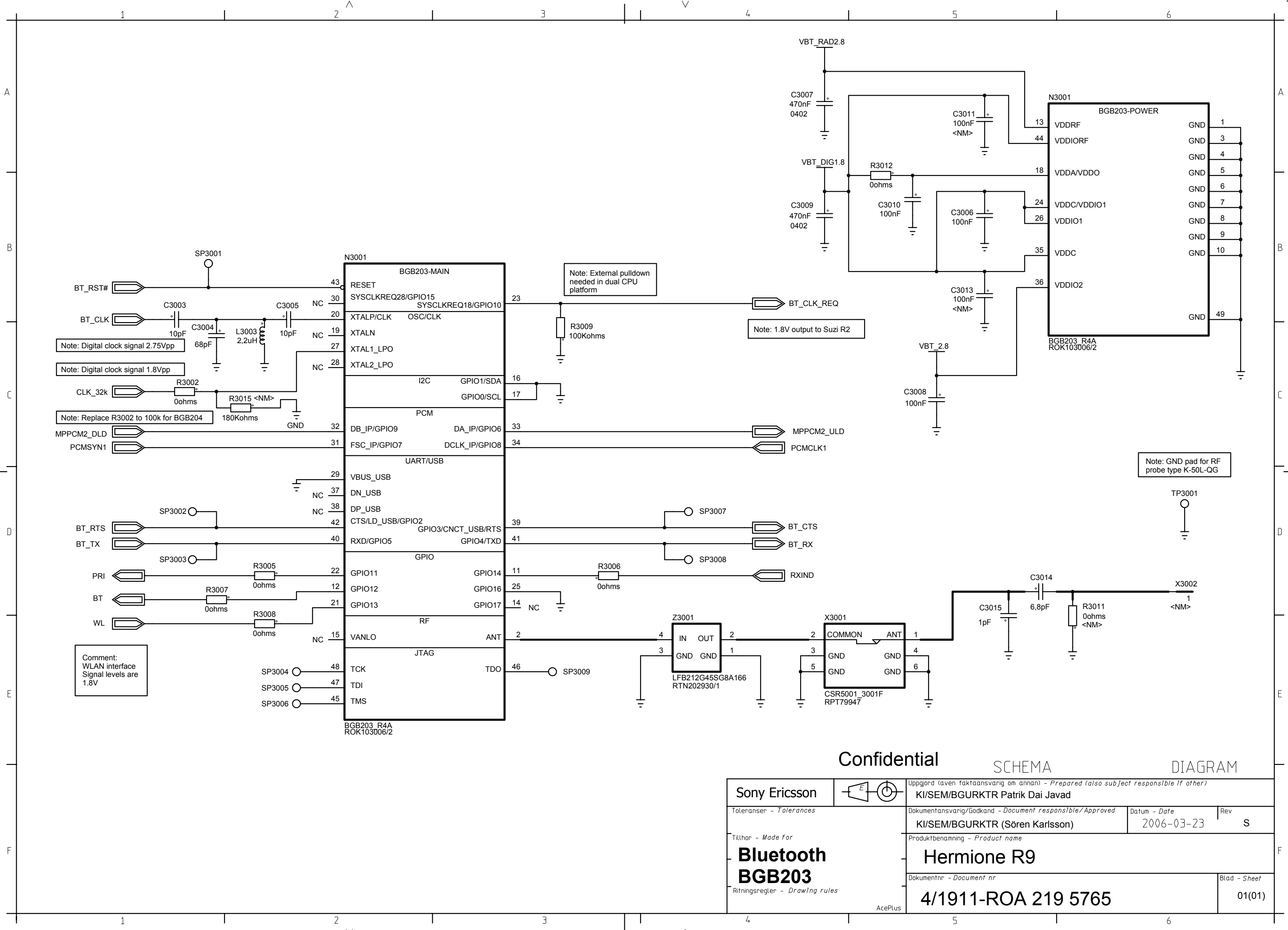


Confidential KRETSSCHEMA CIRCUIT DIAGRAM

Sony Ericsson		KI/SEM/BGURKTL Anders Fredriksson	
Toleranser - Tolerances		Dokumentationsansvarig/Document responsible/Approved BGURKTL (Peter Wickstrom)	
Tilltän - Made for		Datum - Date	
PDA AUDIO		2006-03-23	
Ritningsregeln - Drawing rules		Rev	
Hermione R9		S	
Dokumentnr - Document nr		Blad - Sheet	
6/1911 - ROA 219 5765		3 (3)	



		AcePlus	371011 ROK 215 0700	2
	14		15	16



Confidential SCHEMA DIAGRAM

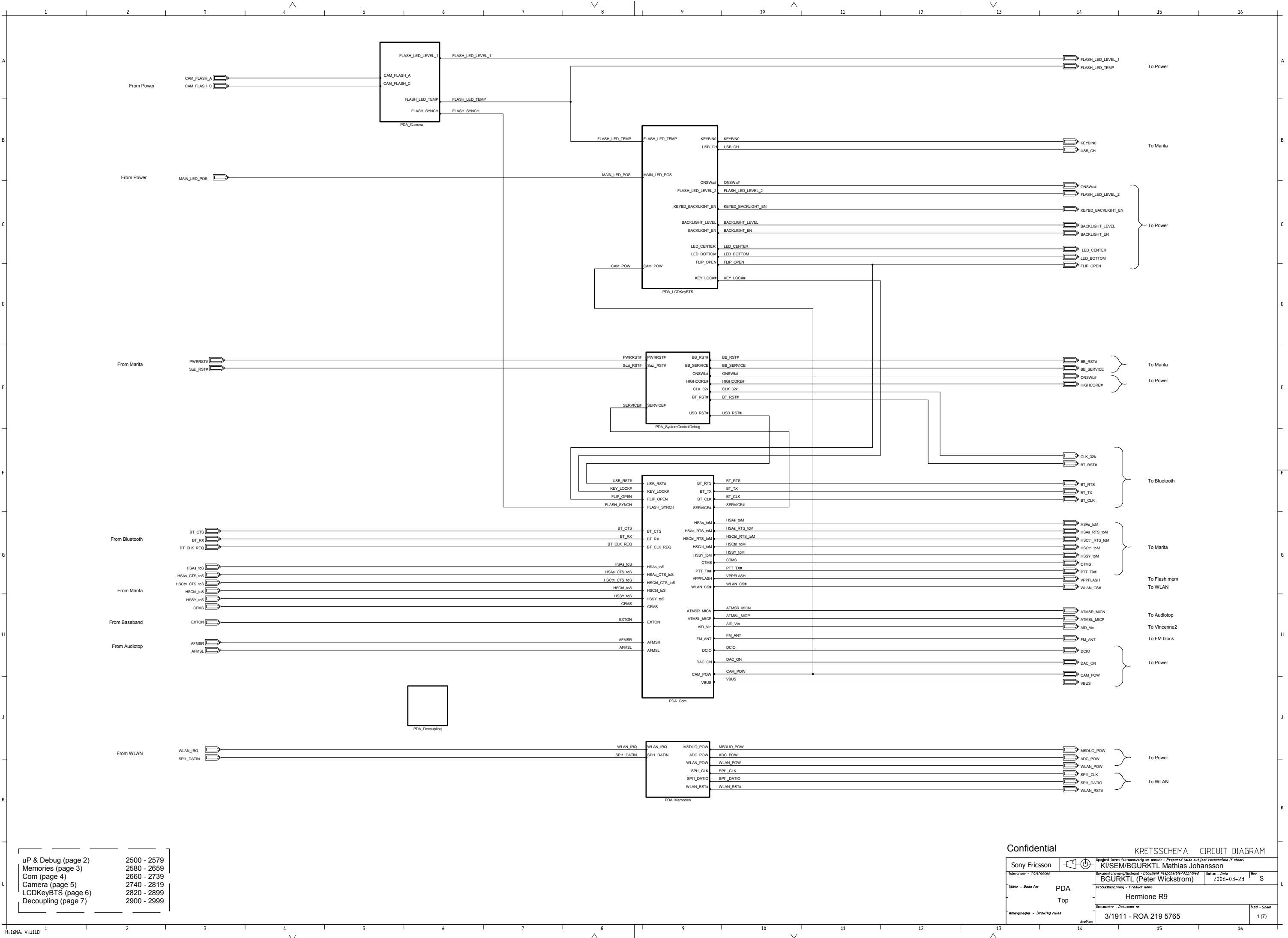
Sony Ericsson		Uppgjord (även faktaansvarig om annan) - Prepared (also subject responsible if other)	
Toleranser - Tolerances		KI/SEM/BGURKTR Patrik Dai Javad	
Tillhör - Made for		Dokumentansvarig/Godkänd - Document responsible/Approved	Datum - Date
Bluetooth		KI/SEM/BGURKTR (Sören Karlsson)	2006-03-23
BGB203		Rev	
Ritningsregler - Drawing rules		Blad - Sheet	
4/1911-ROA 219 5765		01(01)	

LZF 030 101/F RB1

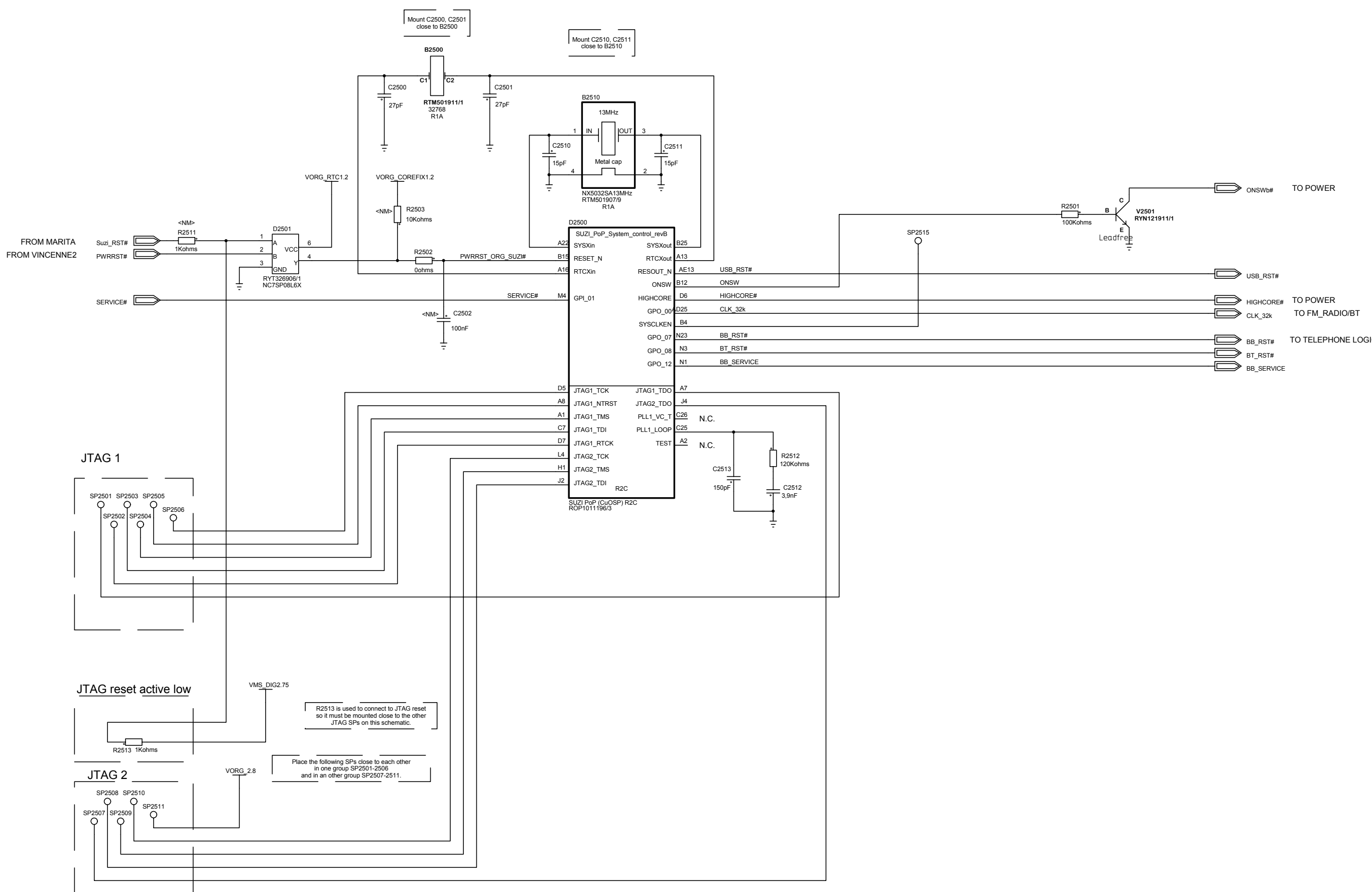
uP & Debug (page 2)	2500 - 2579
Memories (page 3)	2580 - 2659
Com (page 4)	2660 - 2739
Camera (page 5)	2740 - 2819
LCDKeyBTS (page 6)	2820 - 2899
Decoupling (page 7)	2900 - 2999

Confidential KRETSSCHEMA CIRCUIT DIAGRAM

Sony Ericsson		Uppgerd (aven teknisk ansvarig om annan) - Prepared (also subject responsible if other)	
Toleranser - Tolerances		K/SEM/BGURKTL Mathias Johansson	
Tillnär - Made for		BGURKTL (Peter Wickström)	
Produktbenämning - Product name		2006-03-23	
Ritningsregeln - Drawing rules		Hermione R9	
Datum - Date		3/1911 - ROA 219 5765	
Rev		1 (7)	

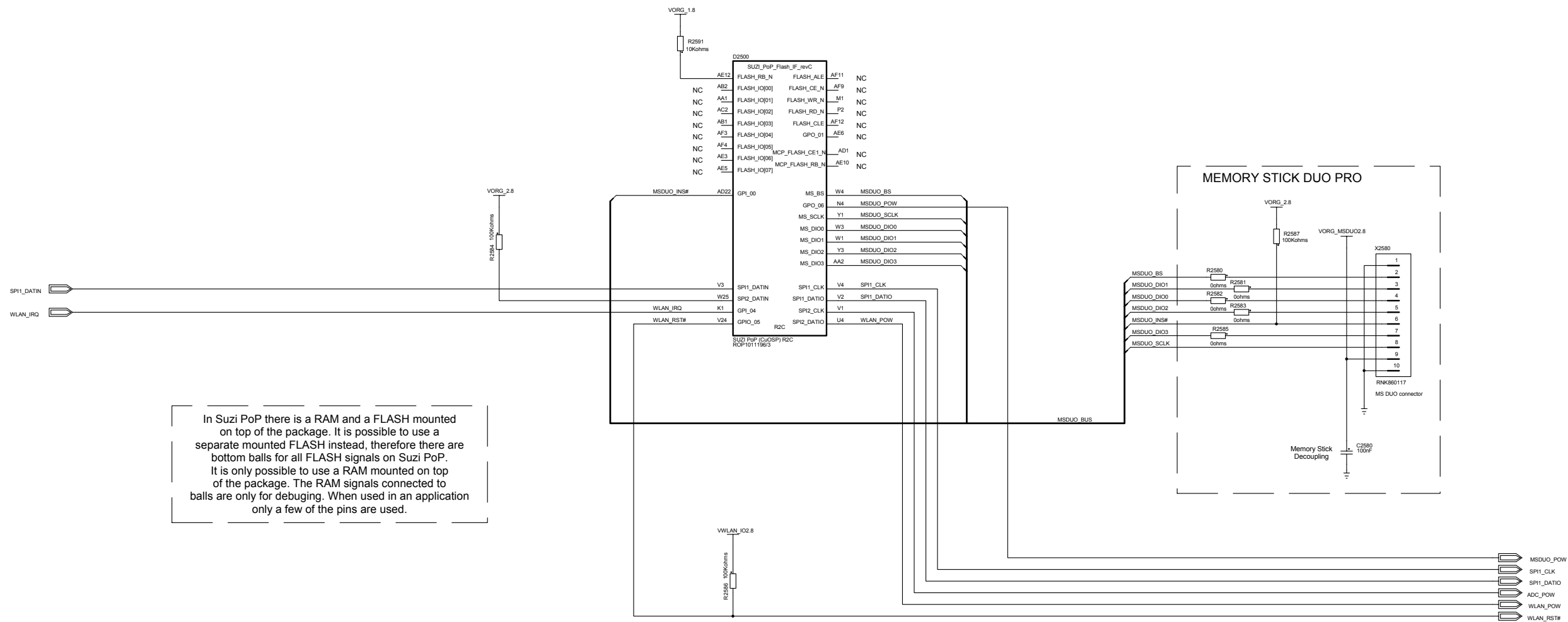


1 2 3 4 5 6 7 8 9 10 11

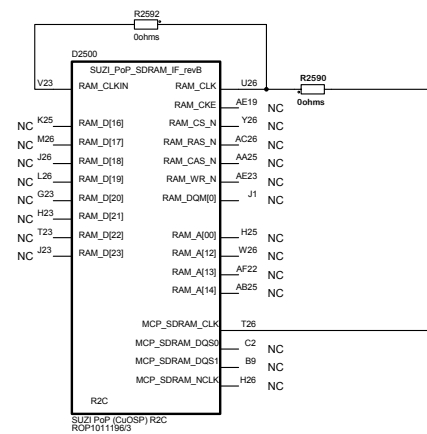


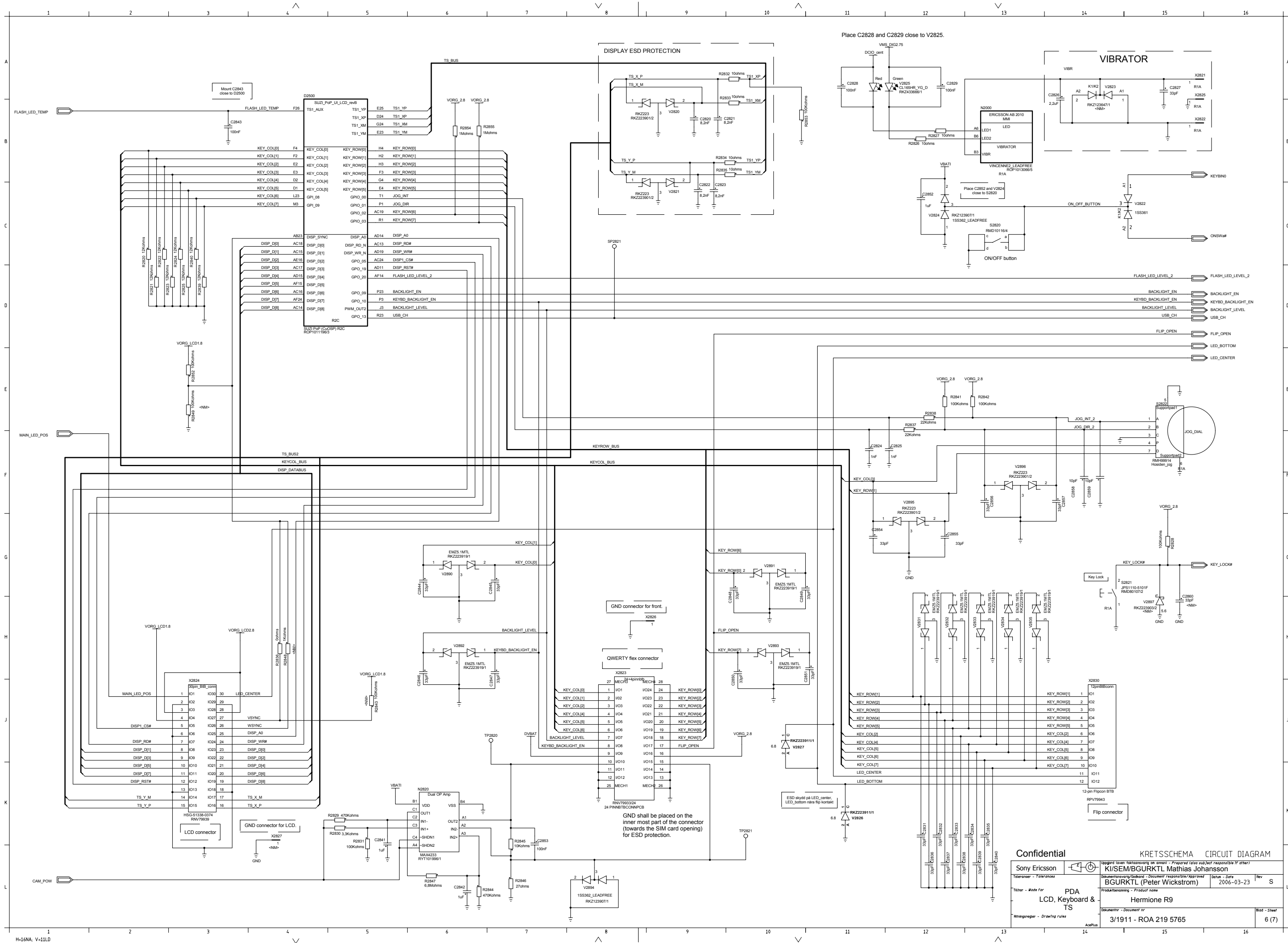
Confidential		SCHEMA		DIAGRAM	
Sony Ericsson		KI/SEM/BGURKTL Mathias Johansson		Uppgjord (även faktaansvarig om annan) - Prepared (also subject responsible if other)	
Toleranser - Tolerances		Bakomponentsvarig/Godkänd - Document responsible/Approved		Datum - Date	
Tillhör - Made for		BGURKTL (Peter Wickstrom)		2006-03-23	
Ritningsregler - Drawing rules		Produktbenämning - Product name		Rev	
PDA		Hermione R9		S	
uP & Debug		Bakomponentnr - Document nr		Blad - Sheet	
		3/1911 - ROA 219 5765		2 (7)	

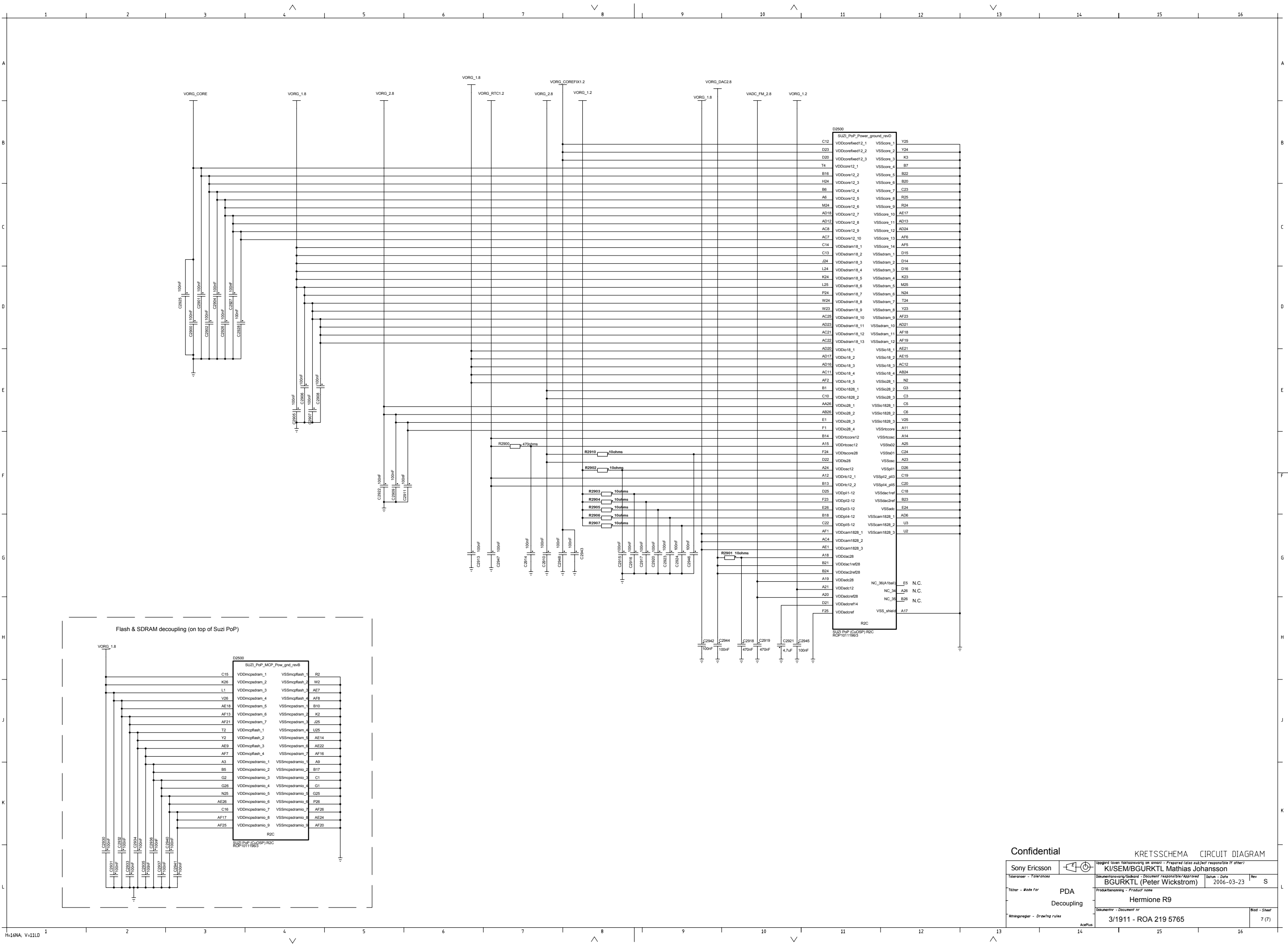
LZF 030 102/F RB



In Suzy PoP there is a RAM and a FLASH mounted on top of the package. It is possible to use a separate mounted FLASH instead, therefore there are bottom balls for all FLASH signals on Suzy PoP. It is only possible to use a RAM mounted on top of the package. The RAM signals connected to balls are only for debugging. When used in an application only a few of the pins are used.



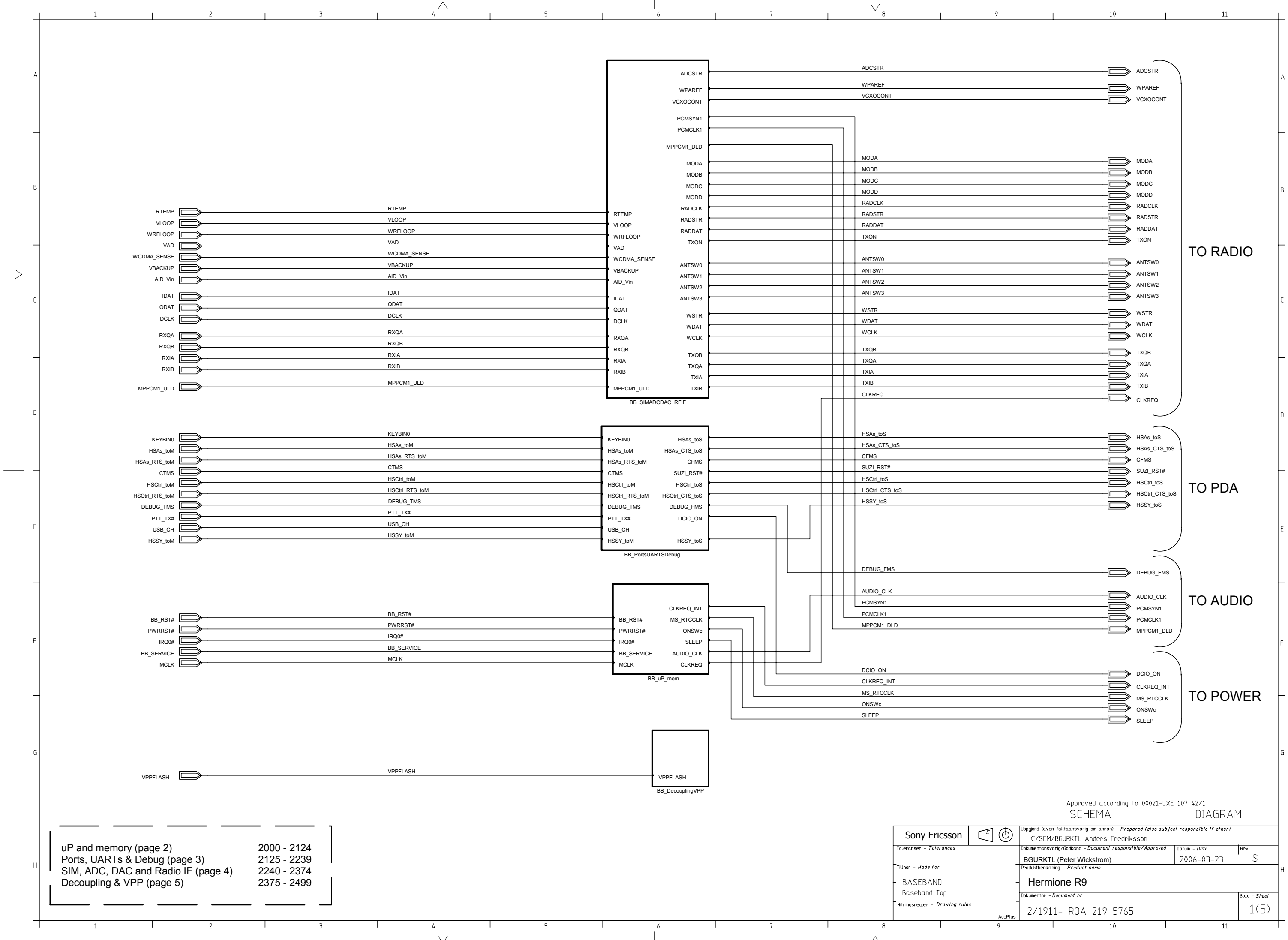




Confidential

KRETSSCHEMA CIRCUIT DIAGRAM

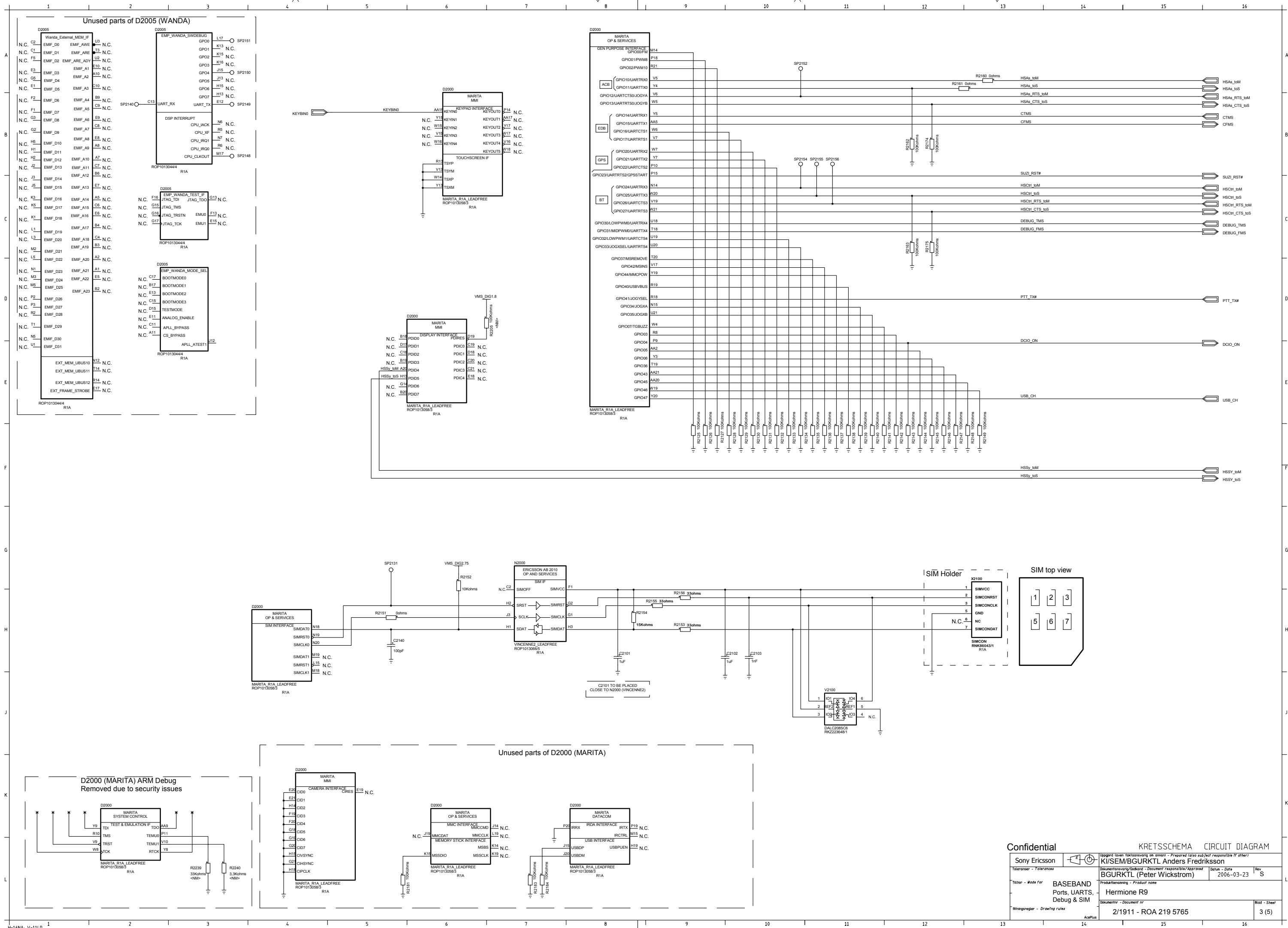
Sony Ericsson		KI/SEM/BGURKTL Mathias Johansson	
Tillverkare - Tolerances		BGURKTL (Peter Wickstrom)	
Tillverkare - Made for		Hermione R9	
Tillverkare - Decoupling		3/1911 - ROA 219 5765	
Tillverkare - Drawing rules		Blad - Sheet	
		7 (7)	



uP and memory (page 2)	2000 - 2124
Ports, UARTs & Debug (page 3)	2125 - 2239
SIM, ADC, DAC and Radio IF (page 4)	2240 - 2374
Decoupling & VPP (page 5)	2375 - 2499

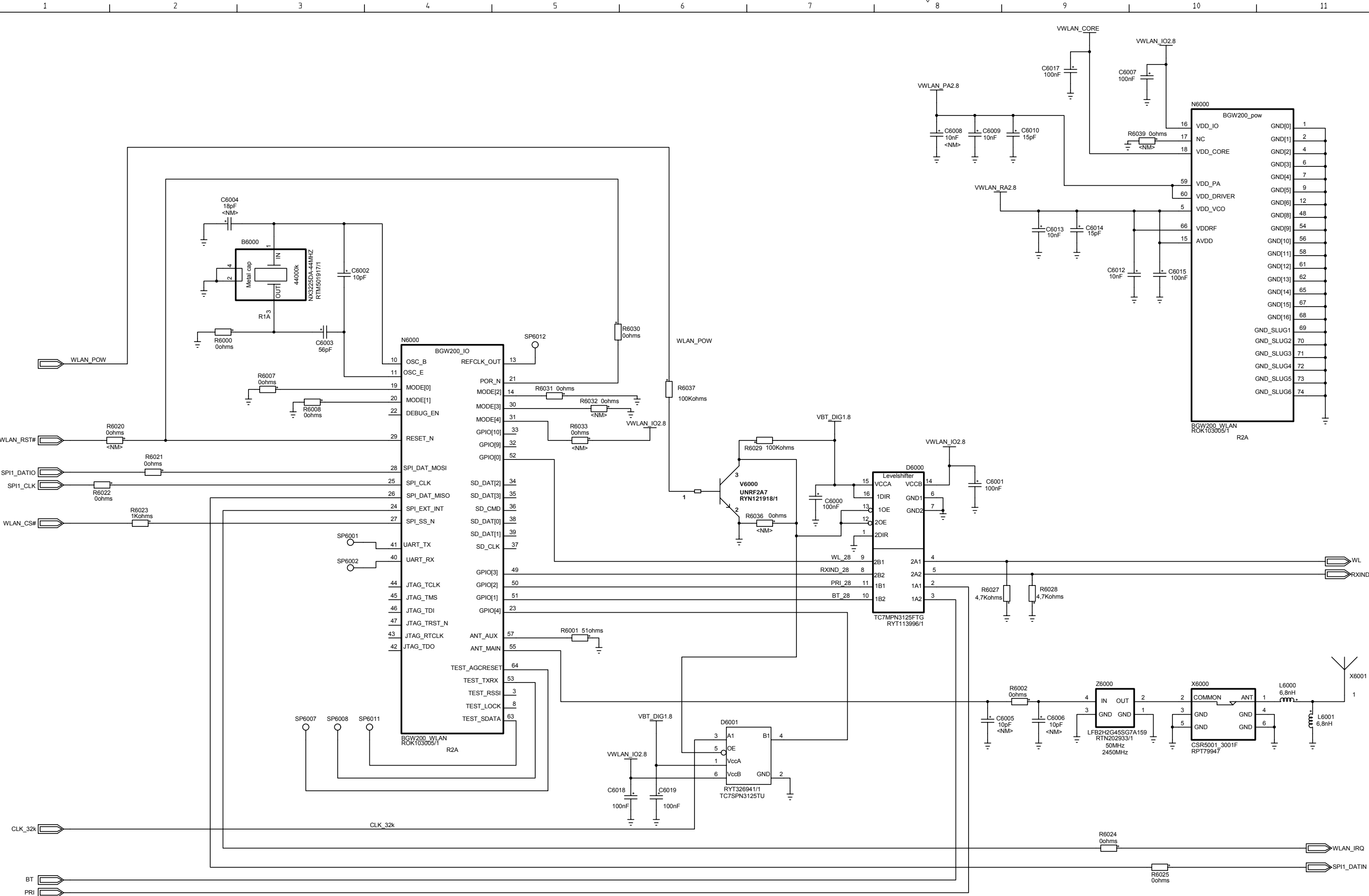
Sony Ericsson		Uppgjord (även faktaansvarig om annan) - Prepared (also subject responsible if other)	
Toleranser - Tolerances		KI/SEM/BGURKTL Anders Fredriksson	
Tillhör - Made for		BGURKTL (Peter Wickstrom)	Datum - Date 2006-03-23
BASEBAND		Hermione R9	
Baseband Top		Blad - Sheet	
Ritningsregler - Drawing rules		2/1911- ROA 219 5765	
		1(5)	











Confidential SCHEMA DIAGRAM

Sony Ericsson		Uppgjord (även faktaansvarig om annan) - Prepared (also subject responsible if other)	
Toleranser - Tolerances		KI/SEM/BGURKTR Tomas Liljemark	
Tillhör - Made for		BGURKTR (Sören Karlsson)	
Ritningsregler - Drawing rules		Datum - Date	
WLAN		2006-03-23	
		Rev	
		S	
		Blad - Sheet	
		7/1911 - ROA 219 5765	
		1 (1)	