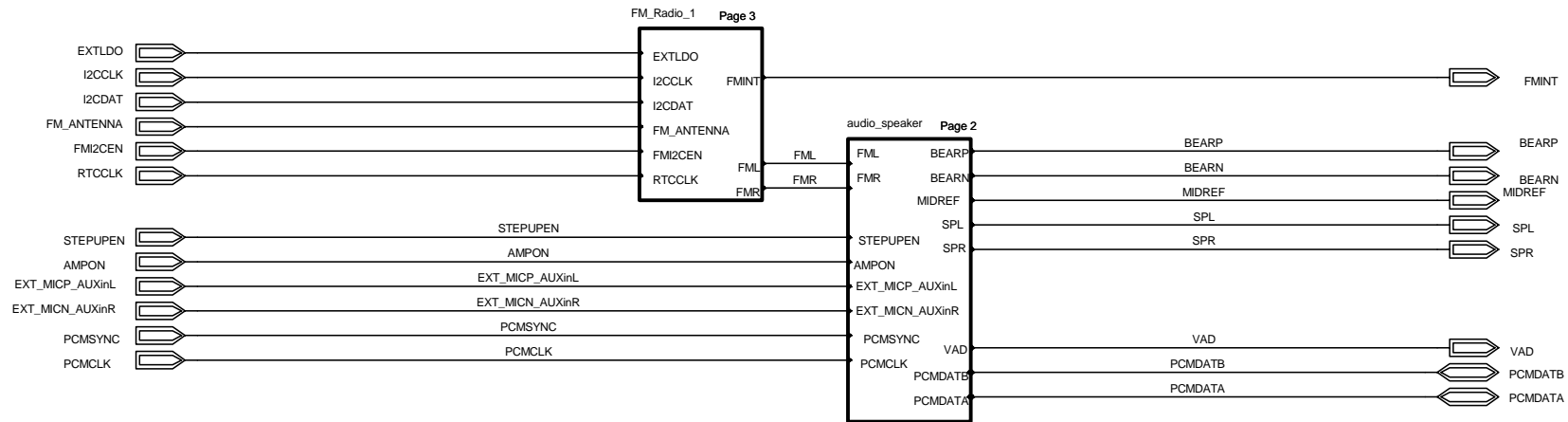


LZF 030 103/F RB



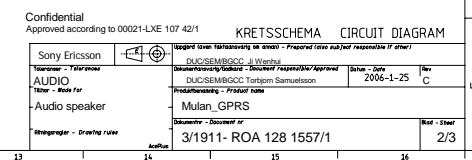
Confidential

Approved according to 00021-LXE 107 42/1

SCHEMA

DIAGRAM

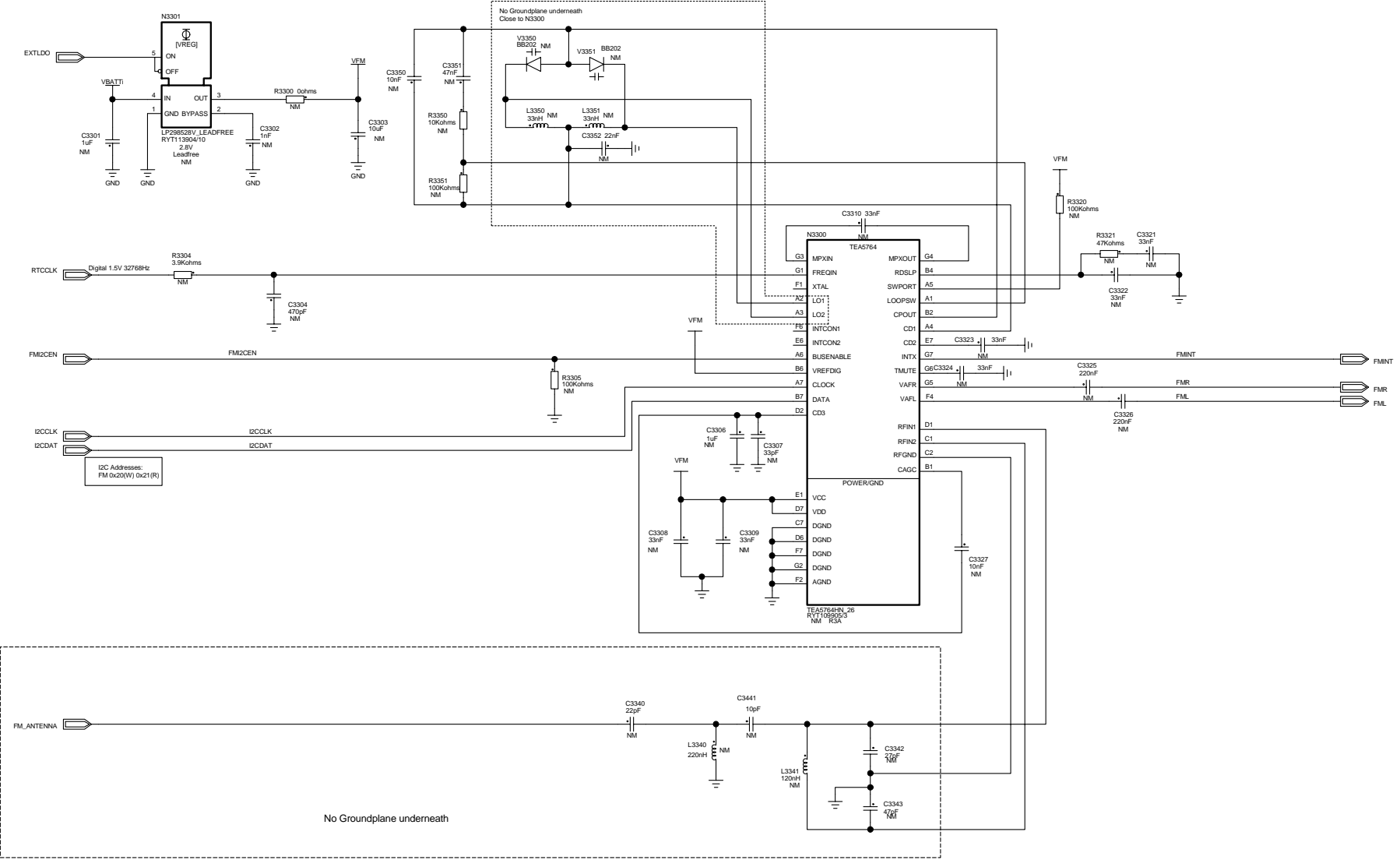
Sony Ericsson		Uppgjord (aven faktaansvarig om annan) - Prepared (also subject responsible if other)	
Toleranser - Tolerances		DUC/SEM/BGCC Ji Wenhui	
AUDIO		Dokumentansvarig/Godkänd - Document responsible/Approved	
Tillhör - Made for		DUC/SEM/BGCC Torbjorn Samuelsson	
Rittningsregler - Drawing rules		Datum - Date	
		2006-1-25	
		Rev	
		C	
		Produktbenämning - Product name	
		Mulan_GPRS	
		Dokumentnr - Document nr	
		3/1911- ROA 128 1557/1	
		Blad - Sheet	
		1/3	



1 2 3 4 5 6 7 8 9 10 11

A
B
C
D
E
F
G
H

A
B
C
D
E
F
G
H



For Mulan All the components should be not mounted. For Jing, All the components should be mounted except R3320 and C3323.

Confidential		Approved according to 00021-LXE 107 42/1		SCHEMA		DIAGRAM	
Sony Ericsson		Uppgäraven faktansvaring on annan - Prepared (also subject responsible if other)		DUC/SEMBGCC Ji Wenhui			
Toleranser - Tolerances		Dokumentation/Godkänd - Document responsible/Approved		Datum - Date		Rev	
AUDIO		DUC/SEMBGCC Torbjörn Samuelsson		2006-1-25		C	
Fiter - Made for		Produktbenämning - Product name					
FM Radio		Mulan_GPRS					
Ritningsregler - Drawing rules		Dokumentnr - Document nr		3/1911- ROA 128 1557/1		Blad - Sheet	
						3/3	