



Working Instruction Repair Instruction Mechanical/, Mechanical

Applicable for C905

CONTENTS

1	Introduction	4
1.1	Equipment.....	5
1.2	General cautions	6
1.3	Adhesives	6
2	Disassembly	7
2.1	Overview	8
2.2	Battery Cover & Battery.....	9
2.3	Foil Flip Inner.....	10
2.4	Keyboard.....	10
2.5	Cap Plastic RF Numeric Keyboard & Cap Numeric Keyboard.....	11
2.6	Cover Flip Front.....	12
2.7	Display 2.41 TFT	13
2.8	LCD Support Sheet	13
2.9	PBA Key Flex Flip Complete	14
2.10	Cover Rear Assembly	16
2.11	Cover Base Rear Assembly.....	17
2.12	Main PBA.....	18
2.13	Loudspeaker Assembly	20
2.14	Flash Complete and Camera 8MP.....	21
3	Replacements.....	23
3.1	Battery Cover & Battery.....	24
3.2	Cover Flip Front Assembly.....	24
3.3	Cover Base Rear Assembly.....	24
3.4	Flash Complete.....	24
3.5	PBA Key Flex Flip Complete	24
3.6	Slider FPC Assy.....	24
3.7	Cover Rear Assembly	24
3.8	Carrier Base Assembly	25
3.9	Camera 8 MP	25
3.10	Foil Flip Inner.....	25
3.11	LCD Support Sheet	25
3.12	Loudspeaker Assembly	25



3.13 Screw 4.0x1.4.....	25
3.14 Screw 2.3x1.4.....	25
3.15 Screw Torx 5.3x1.6.....	26
3.16 Screw Torx 5.0x1.6.....	26
3.17 Screw Philips M1.4x1.7.....	26
3.18 Cap Plastic RF Keyboard Numeric.....	26
3.19 Cap Numeric Keyboard.....	26
3.20 Foil Adhesive Single Side 0.15 mm Flip Tape.....	26
3.21 Display 2.41 TFT.....	27
3.22 Cover Flip Inner Metal.....	27
3.23 Cap Reinforcement Plug (Right and Left).....	28
3.24 Numeric Key Foil.....	29
3.25 Keyboard Navigation.....	31
3.26 Key A/B Left.....	32
3.27 Key A/B Right.....	33
3.28 Co Brand Label.....	34
3.29 Key Volume.....	35
3.30 Key Mode.....	35
3.31 Key Camera.....	36
3.32 M2 Lid37.....	
3.33 Microphone Gasket.....	38
3.34 BT/WLAN Antenna.....	39
3.35 Left Sidepanel.....	40
3.36 Right Sidepanel Bottom.....	41
3.37 Right Sidepanel Top.....	42
3.38 Ear Speaker.....	43
3.39 Vibrator.....	44
3.40 Light GU Navigation.....	45
3.41 Dome Foil Flip.....	45
3.42 PBA Key Flex Flip Complete.....	47
3.43 Shield Can Lid Flip.....	48
3.44 Cushion 1,0mm1,3x5,1,0 Conductive.....	49
3.45 Foil Adhesive 0.048 mm Flex Flip.....	50
3.46 Foil Adhesive Conductive 0.05 mm protection tape, front.....	51
3.47 Foil Adh Conduct GPS ESD protection tape.....	52
3.48 Foil Adhesive Double Side GPS Shieldcan.....	53
3.49 Foil Adhesive Double Side A/B Flex Tape.....	54
3.50 Foil Adhesive Double Side GPS Antenna.....	55
3.51 Shield can lid, Vera.....	55
3.52 Shield can lid, regulator.....	56
3.53 Shield can lid, Kajsa.....	56
3.54 Shield can lid, WLAN.....	57
3.55 Shield Can Lid, Camera.....	57
3.56 Liquid Intrusion Indicator (1 and 2).....	58
3.57 Foil Adhesive LCD Support, left.....	60
3.58 Foil Adhesive LCD Support, right.....	61



3.59	Light GU Numeric	62
3.60	Hinge Slide Mechanism	64
3.61	Protection Tape	65
3.62	Magnet metal	67
3.63	Label	68
3.64	Board Swap – Replace swap board.....	69
3.65	Board Swap – Change Label	70
3.66	Board Swap – Customize Software	70
4	Reassembly	71
4.1	Overview	72
4.2	Flash Complete and Camera 8 MP.....	73
4.3	Loudspeaker Assembly	75
4.4	Main PBA.....	75
4.5	Cover Base Rear Assembly.....	79
4.6	Cover Rear Assembly	80
4.7	PBA Key Flex Flip Complete	81
4.8	LCD Support Sheet	84
4.9	Display 2.41 TFT	85
4.10	Cover Flip Front.....	86
4.11	Cap Plastic RF Numeric Keyboard & Cap Numeric Keyboard.....	87
4.12	Keyboard.....	88
4.13	Foil Flip Inner.....	89
4.14	Battery Cover & Battery.....	89
5	Country of Origin Barcodes for Brazil/VIVO Labels.....	90
6	Revision history	91

1 Introduction



1.1 Equipment

SPECIAL TOOLS

Special tools text:

- NTZ 122 459 Torque Screwdriver (or equivalent)
- NTZ 122 288 Bit (T6)
- NTZ 112 478 Bit (T5)
- NTZ 112 1052 Bit(JCIS No 0)
- NTZ 112 302/2 Front opening tool
- NTZ 122 521 Flex film assembly tool
- NTZ 112 590 Plectrum/SVC & Repair



STANDARD TOOLS

Standard tools text:

- Dentist hook
- ESD tweezers
- Nylon Pointer
- Screwdriver
- Knife



ESD EQUIPMENT

Protect the phone from ESD damages whenever it has been opened by using:

- ESD-wristband
- ESD-gloves



LABEL EQUIPMENT

The following special equipment is required when replacing or installing a new label:

- Hot air flow solder station
- Zebra printer connected to computer



1.2 General cautions

The following cautions are considered to be generic for all phone models and will not be repeated in the Disassembly, Replacements and Reassembly sections:

- **SWITCH OFF THE PHONE AND REMOVE ANY MEMORY STICK BEFORE THE START OF THE DISASSEMBLY!**
- **KEEP ALL CONTACT SURFACES CLEAN!**
- **BE CAREFUL WHEN USING TOOLS LIKE THE DENTIST HOOK, TWEEZERS, OPENING TOOLS, GUITAR PICK ETC. TO AVOID SCRATCHES OR DAMAGES TO THE EXTERIOR AND INTERIOR PARTS OF THE PHONE!**
- **BE CAREFUL NOT TO DAMAGE ANY CONTACT SPRINGS!**
- **REMEMBER TO REMOVE THE PROTECTION FOILS ON NEW PARTS SUCH AS THE FRONT COVER AND LCD!**
- **NEVER TOUCH THE DISPLAY GLASS!**
- **USE AIR BLOW EQUIPMENT TO KEEP THE FRONT WINDOW AND DISPLAY MODULE DUST FREE!**

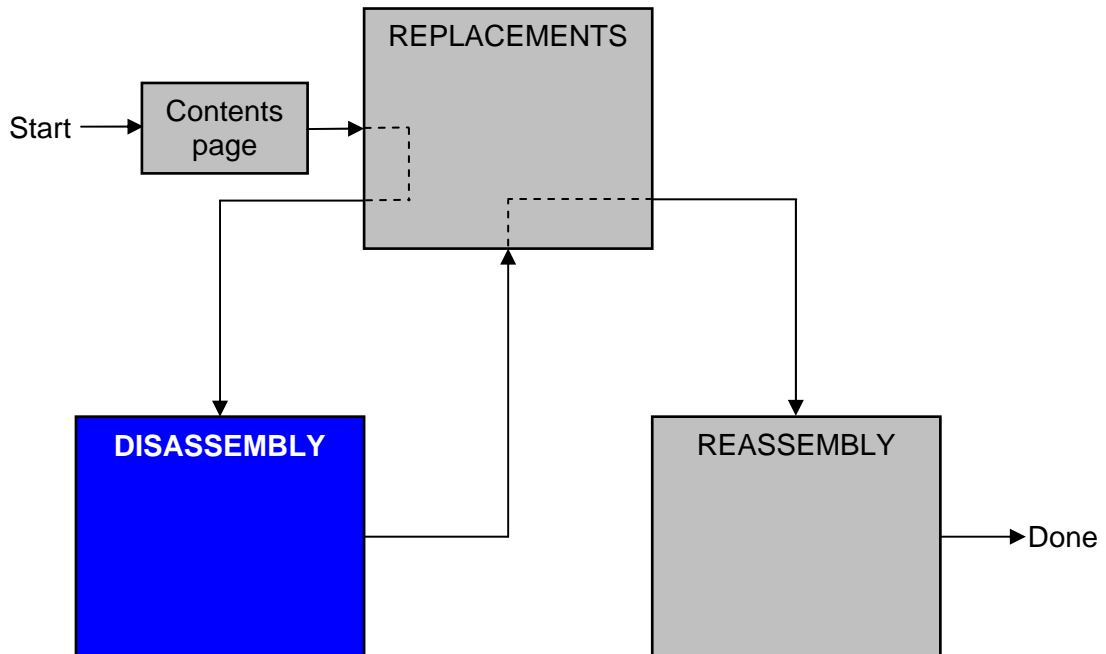
1.3 Adhesives

Use a dentist hook and/or the tweezers to remove old adhesives.
Clean the surface with isopropyl alcohol before attaching new adhesives.



2 Disassembly

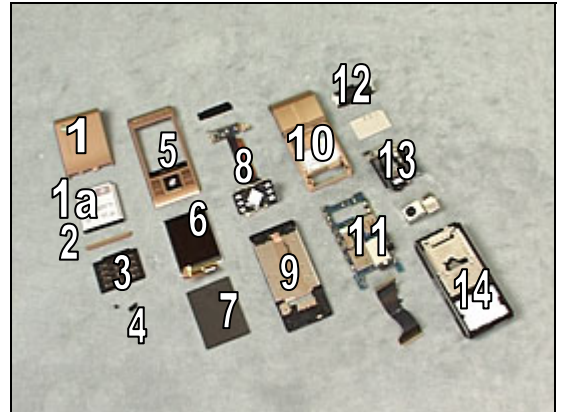
When you are going to replace a part being listed in *Replacements*, the instruction of that section usually begins by directing you to this *Disassembly* section with a specification of the instructions you have to carry out in order to disassemble the phone as far as needed before returning to *Replacements* for the actual replacement.



2.1 Overview

The disassembly is done in the following sequence:

1. Battery Cover
- 1a. Battery
2. Flip Inner
3. Keyboard
4. Cap Plastic RF Numeric Keyboard & Cap Numeric Keyboard
5. Cover Flip Front
6. Display 2.41 TFT
7. LCD Support Sheet
8. PBA Key Flex Flip Complete
9. Cover Rear Assembly
10. Cover Base Rear Assembly
11. Main PBA
12. Loudspeaker Assembly
13. Flash Complete and Camera 8MP
14. Carrier Base Assembly



2.2 Battery Cover & Battery

Remove the Battery Cover.

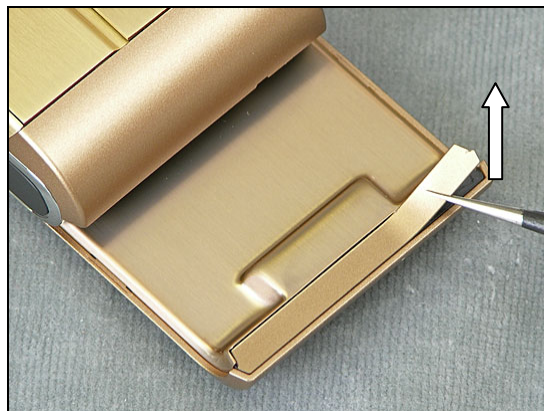


Remove the Battery.

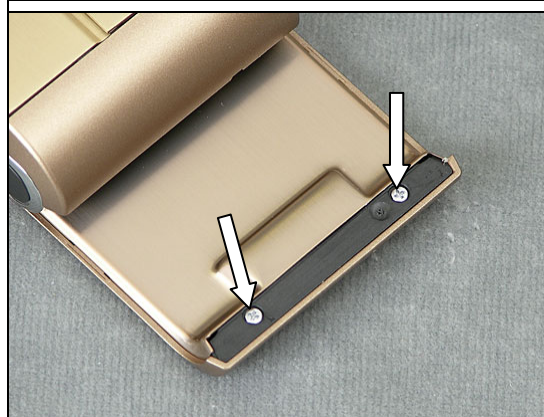


2.3 Foil Flip Inner

Use a pair of ESD tweezers to remove the Flip Inner.



Use a Screwdriver with JCIS Bit to remove the two Screws 4.0x1.4.



2.4 Keyboard

Use a Screwdriver to loosen the keyboard from the opposite side



Use a Flex Film Assembly Tool to remove the Keyboard

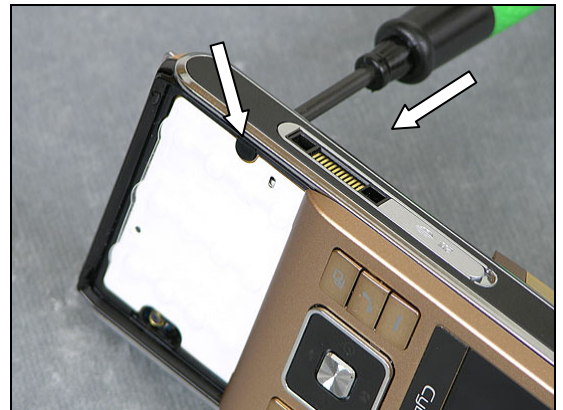


2.5 Cap Plastic RF Numeric Keyboard & Cap Numeric Keyboard

Use a Screwdriver to remove the Cap Plastic RF Keyboard Numeric on the opposite side.

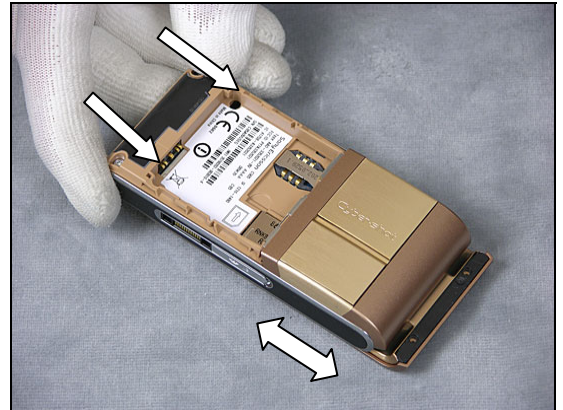


Use Screwdriver to remove the Cap Numeric keyboard on the opposite side.

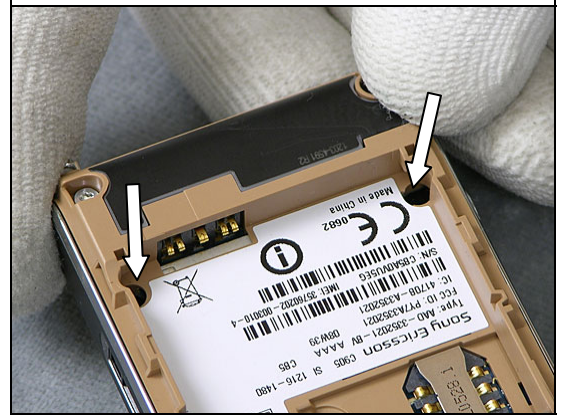


2.6 Cover Flip Front

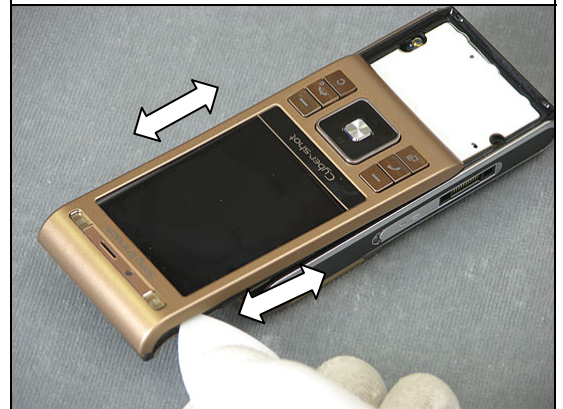
Use your fingers to slide and position the Cover Flip Front to make the two Screws 1.4x2.1 visible through the two holes in the Cover Base Rear Assembly.



Use a Screwdriver with JCIS Bit to remove the two Screws 1.4x2.1.



Use a Guitar Pick to loosen the Cover Flip Front on both sides.

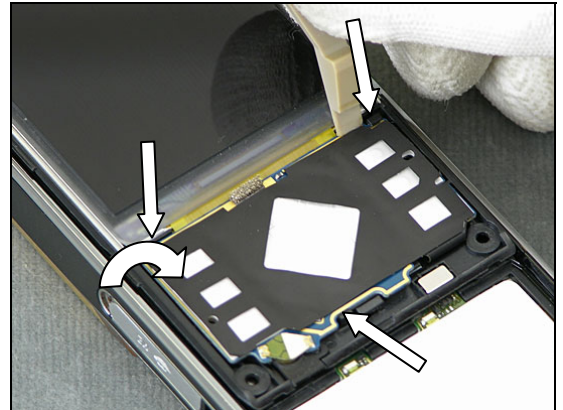


Use your fingers to remove the Cover Flip Front.



2.7 Display 2.41 TFT

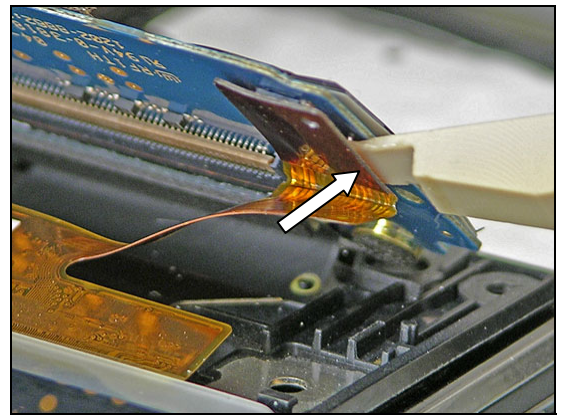
Locate the three snap hooks and use a Front Opening Tool to release the PCB-part of the PBA Key Flex Flip Complete.



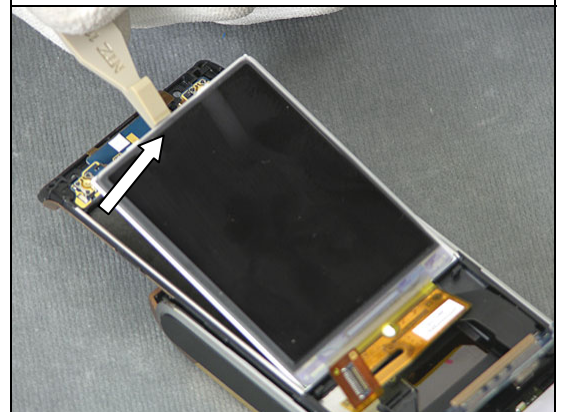
Use a Front Opening Tool to disconnect the LCD FPC Connector

BE VERY CAREFUL WHEN BENDING THE PCB-PART OF THE KEY FLEX FLIP

BE VERY CAREFUL NOT TO DAMAGE THE DISPLAY FLEX!

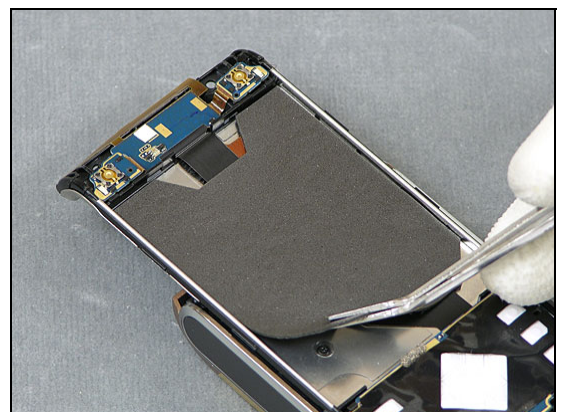


Use a Front Opening Tool to remove the Display 2.41 TFT.



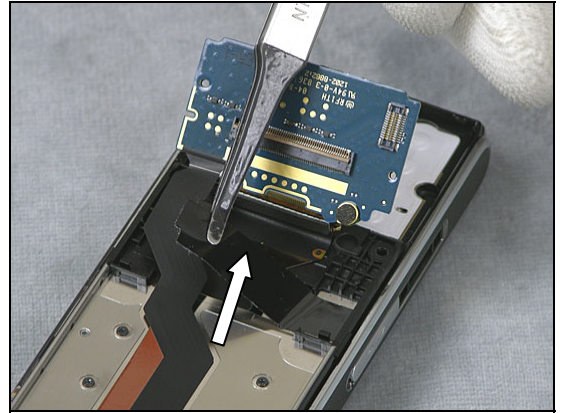
2.8 LCD Support Sheet

Use a blunt pair of Tweezers to remove the LCD Support Sheet.

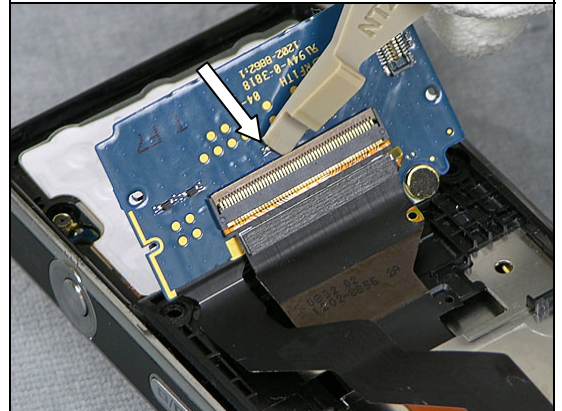


2.9 PBA Key Flex Flip Complete

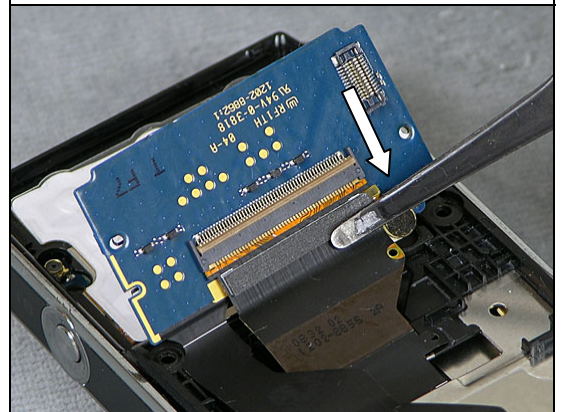
Use a Flex Film Assembly Tool to remove the Foil Adhesive Single Side 0.15 mm Flip Tape



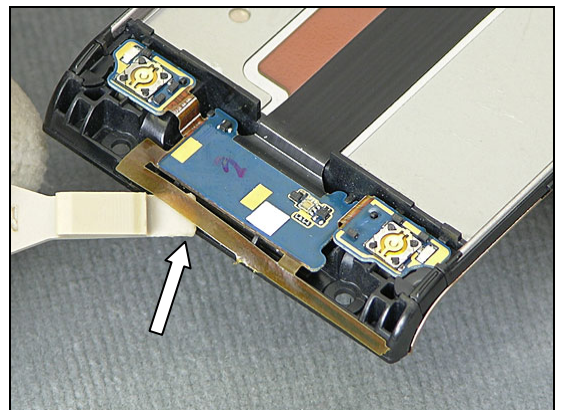
Use a Front Opening Tool to unsnap the PBA Key Flex Flip Complete connector



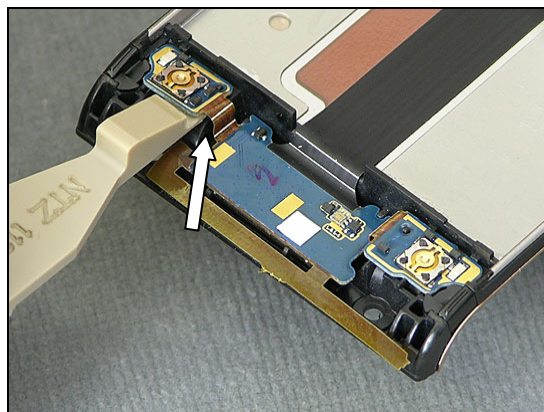
Use a Flex Film Assembly Tool to disconnect the Slider FPC Assy from the PBA Key Flex Complete



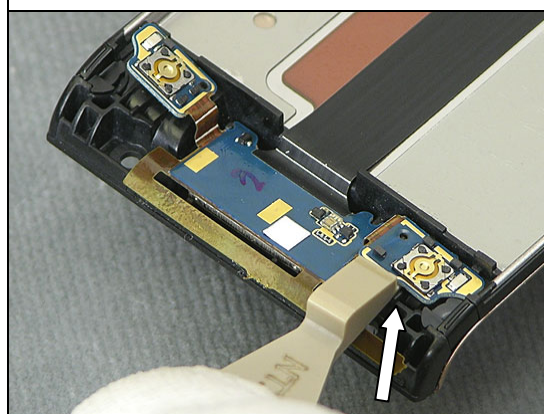
Use a Front Opening Tool to loosen the GPS Antenna.



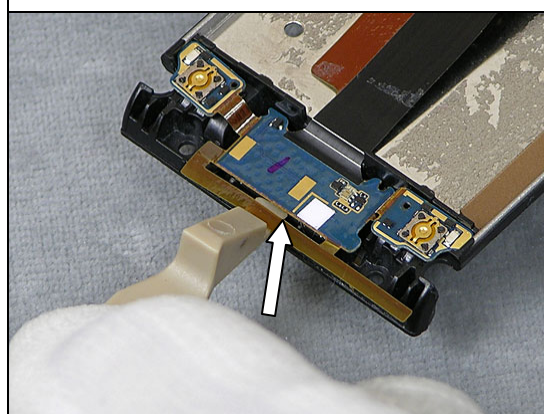
Use a Front Opening Tool to loosen the Key B part of the Board.



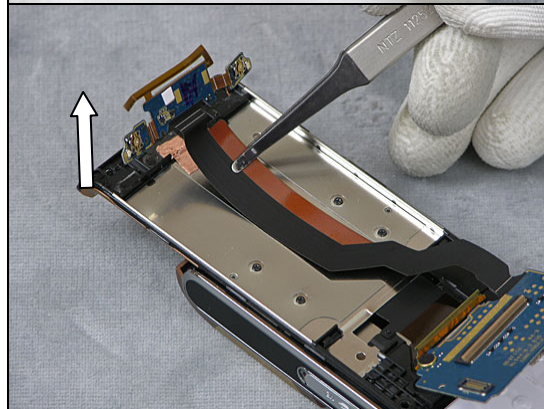
Use a Front Opening Tool to loosen the Key A part of the Board.



Use a Front Opening Tool to loosen the GPS part of the Board.



Use a Flex Film Assembly Tool to remove the PBA Key Flex Flip Complete

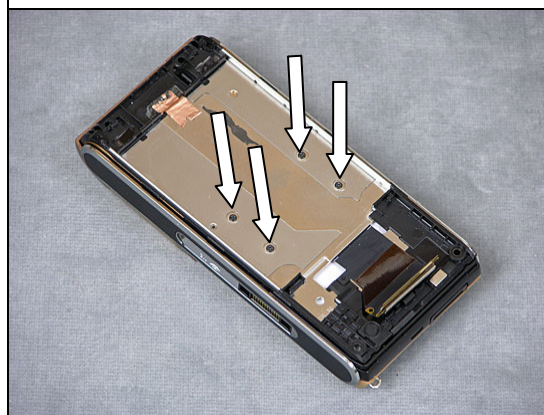


2.10 Cover Rear Assembly

Use a Flex Film Assembly Tool to loosen the Slider PPC Assy from the Cover Rear Assembly



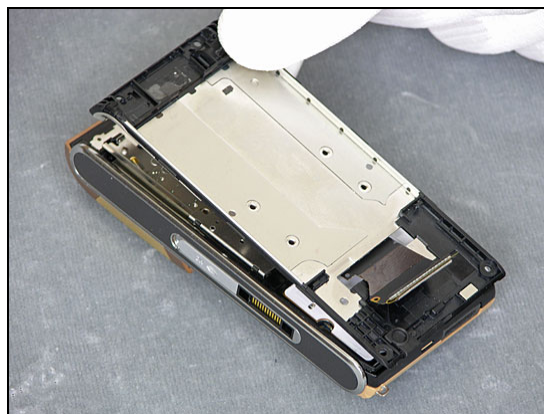
Use a Screwdriver with JCIS Bit to remove the four Flat Head M1.4x1.7



Use a Flex Film Assembly Tool to loosen the Slider PPC Assy from the back of the Cover Rear Assembly

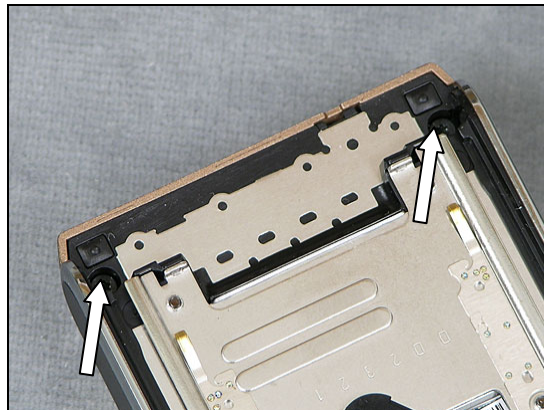


Use your fingers to remove the Cover Rear Assembly



2.11 Cover Base Rear Assembly

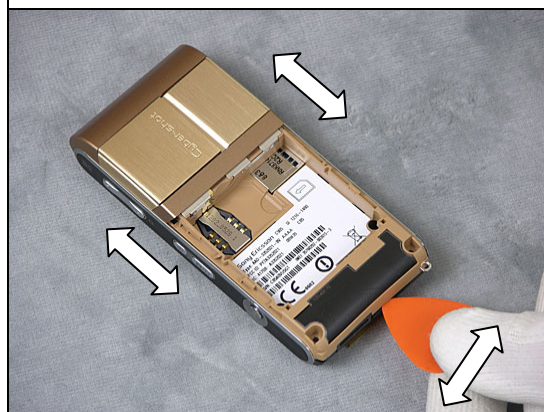
Use a Screwdriver with T5 Bit to remove the two Screws Torx 5.0x1.6.



Use a Screwdriver with T6 Bit to remove the two Screws Torx 5.3x1.6.



Use a Guitar Pick to loosen the Cover Base Rear Assembly on three sides



Use your fingers to remove the Cover Base Rear Assembly.



2.12 Main PBA

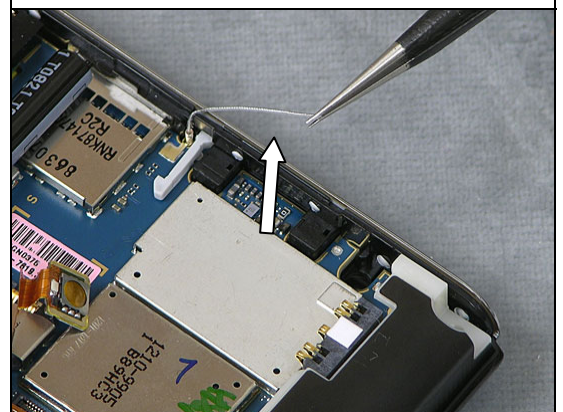
Use a Front Opening Tool to disconnect the Numeric Key Foil Connector from the Main PBA



Use a Flex Film Assembly Tool to pull the Numeric Key Foil out of the camera key switch supporter.



Use a Pair of ESD Tweezers to loosen the BT/WLAN Antenna

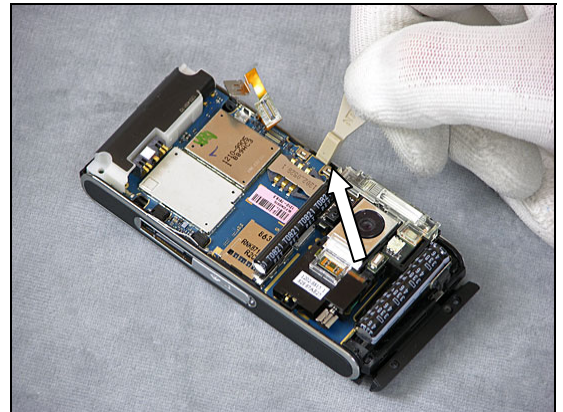


BE VERY CAREFUL NOT TO DAMAGE THE MAIN PBA SWITCHES WHEN LOOSENING THE MAIN PBA!

Use a Front Opening Tool to bend the Carrier Base Assembly away from the Main PBA and loosen the Main PBA.

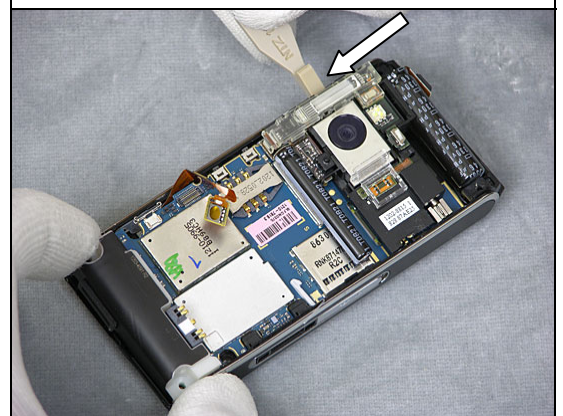


Use a Front Opening Tool to bend the Carrier Base Assembly away from the Main PBA and loosen the Main PBA.



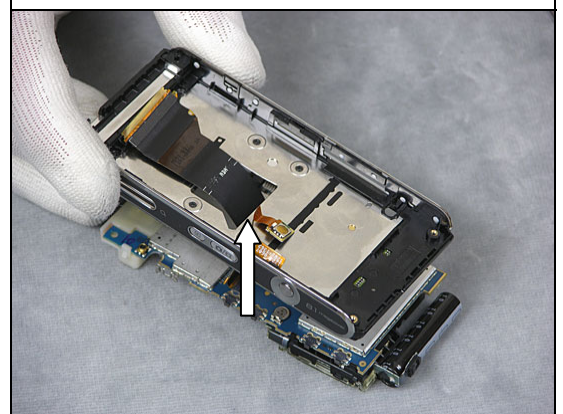
BE VERY CAREFUL NOT TO DAMAGE THE MAIN PBA SWITCHES WHEN REMOVING THE MAIN PBA!

Use a Front Opening Tool to bend the Carrier Base Assembly away from the Main PBA and loosen the Main PBA.



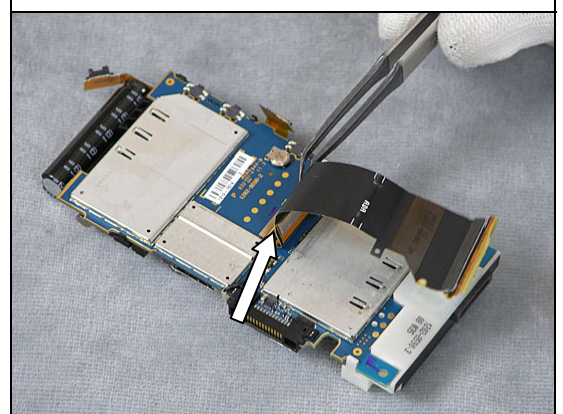
BE VERY CAREFUL NOT TO DAMAGE THE SLIDER FPC ASSY!

Use your fingers to gently thread the Slider FPC Assy through the gap

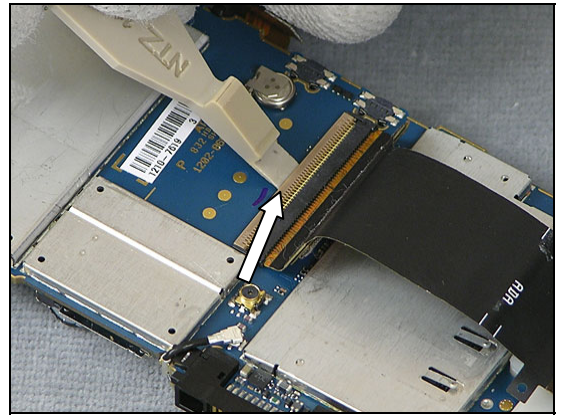


Use A Flex Film Assembly Tool to Loosen the Slider FPC Assy Adhesive from the 100 pin FPC connector

BE VERY CAREFUL NOT TO DAMAGE THE SLIDER FPC ASSY!

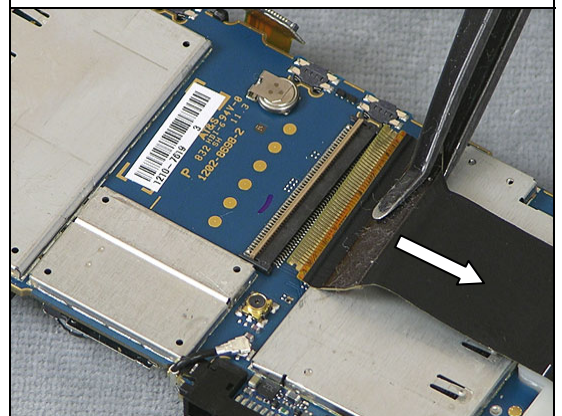


Use a Front Opening Tool to unhook the board to flex connector from the Main PBA.



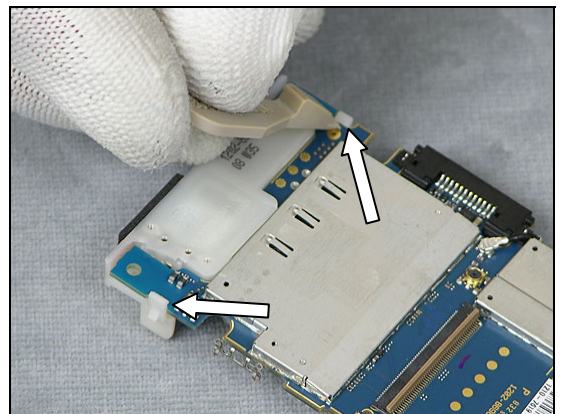
Use a Flex Film Assembly Tool to remove the Slider FPC Assy from the Main PBA

BE VERY CAREFUL NOT TO DAMAGE THE SLIDER FPC ASSY!



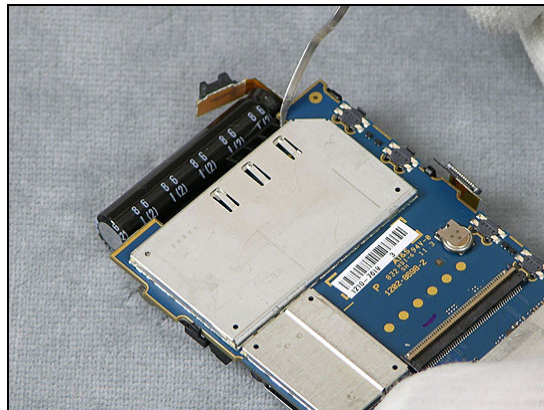
2.13 Loudspeaker Assembly

Use a Front Opening Tool to release the snap hooks and remove the Loudspeaker Assembly.

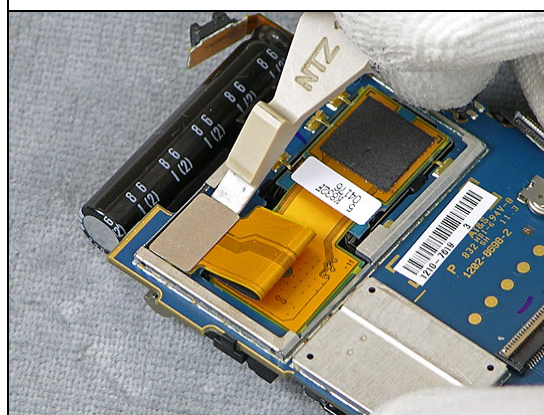


2.14 Flash Complete and Camera 8MP

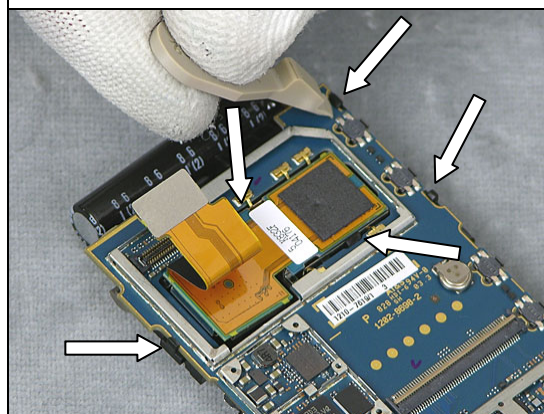
Use a Dentist Hook to remove the Shield Can Lid, Camera



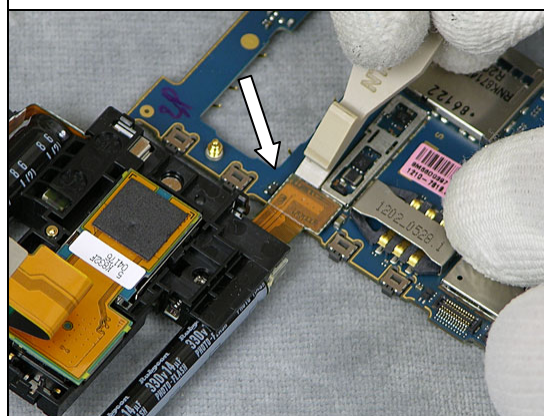
Use a Front Opening Tool to disconnect the Camera Connector from the Main PBA



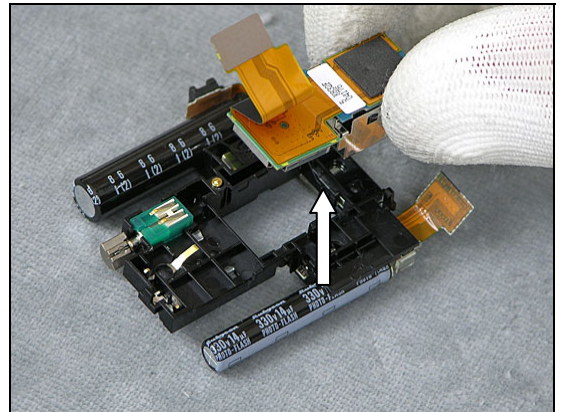
Use a Front Opening Tool to release the five snap hooks



Turn over the Main PBA and use a Front Opening Tool to disconnect the Flash Complete from the Main PBA



Use your fingers to gently remove the Camera 8MP from the Flash Complete



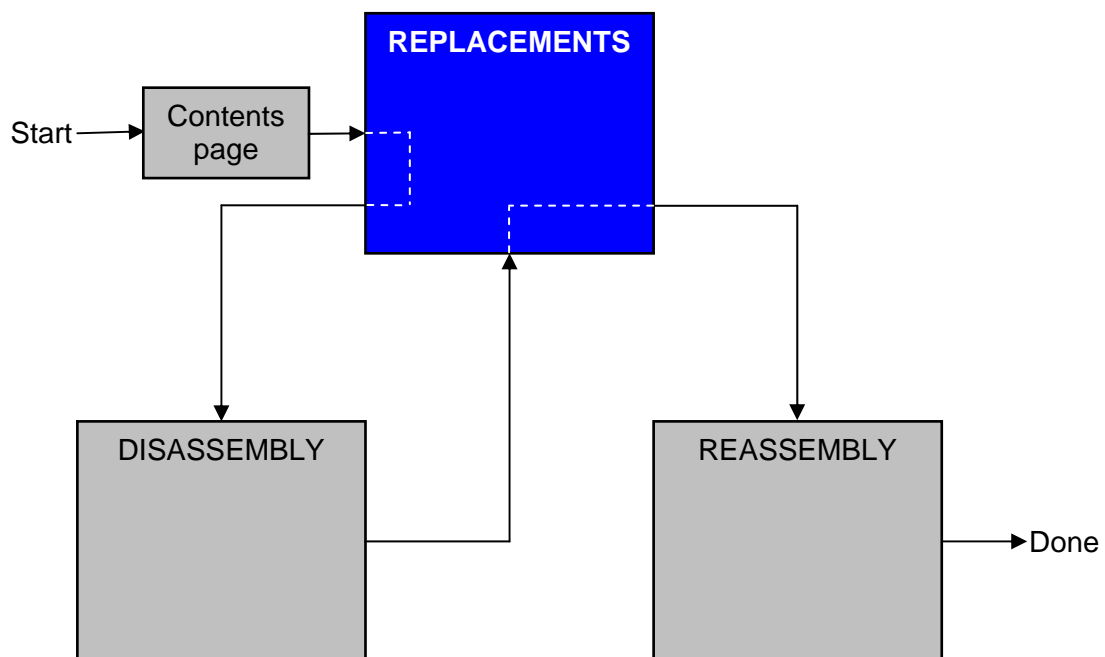
3 Replacements

Search for the part to be replaced on the Contents page and go to that instruction to be found in this *Replacements* section.

The instruction usually begins by directing you to the *Disassembly* section with a specification of the instructions you have to carry out in order to disassemble the phone as far as needed before the actual replacement.

Go back to this *Replacements* section and carry out the instruction.

The instruction usually ends by directing you to the *Reassembly* section with a specification of the instructions you have to carry out in order to reassemble the phone.





3.1 Battery Cover & Battery

Follow the 2.2 Disassembly instructions!

Replace Battery Cover and/or Battery

Follow the 4.14 Reassembly instructions!

3.2 Cover Flip Front Assembly

Follow the 2.2 – 2.6 Disassembly instructions!

Replace Cover Flip Front Assembly

Follow the 4.10 – 4.14 Reassembly instructions!

3.3 Cover Base Rear Assembly

Follow the 2.2 – 2.11 Disassembly instructions!

Replace Cover Base Rear Assembly

Follow the 4.5 – 4.14 Reassembly instructions!

3.4 Flash Complete

Follow the 2.2 – 2.14 Disassembly instructions!

Replace Flash Complete

Follow the 4.2 – 4.14 Reassembly instructions!

3.5 PBA Key Flex Flip Complete

Follow the 2.2 – 2.9 Disassembly instructions!

Replace Key Flex Flip Complete

Follow the 4.7 – 4.14 Reassembly instructions!!

3.6 Slider FPC Assy

Follow the 2.2 – 2.12 Disassembly instructions!

Replace Slider FPC Assy

Follow the 4.4 – 4.14 Reassembly instructions!

3.7 Cover Rear Assembly

Follow the 2.2 – 2.10 Disassembly instructions!

Replace Cover Rear Assembly

Follow the 4.6 – 4.14 Reassembly instructions!



3.8 Carrier Base Assembly

Follow the 2.2 – 2.12 Disassembly instructions! And 3.29-3.31, 3.34 – 3.36, 3.62 Replacement Instructions!

Replace Carrier Base Assembly

Follow the 4.4 – 4.14 Reassembly instructions! And 3.29-3.31, 3.34 – 3.36, 3.62 Replacement Instructions!

3.9 Camera 8 MP

Follow the 2.2 – 2.14 Disassembly instructions!

Replace Camera 8 MP

Follow the 4.2 – 4.14 Reassembly instructions!

3.10 Foil Flip Inner

Follow the 2.2 – 2.3 Disassembly instructions!

Replace Foil Flip Inner

Follow the 4.13 – 4.14 Reassembly instructions!

3.11 LCD Support Sheet

Follow the 2.2 – 2.8 Disassembly instructions!

Replace LCD Support Sheet

Follow the 4.8 – 4.14 Reassembly instructions!

3.12 Loudspeaker Assembly

Follow the 2.2 – 2.13 Disassembly instructions!

Replace Loudspeaker Assembly

Follow the 4.3 – 4.14 Reassembly instructions!

3.13 Screw 4.0x1.4

Follow the 2.2 – 2.3 Disassembly instructions!

Replace Screw 4.0x1.4 (torque 11Ncm)

Follow the 4.13 – 4.14 Reassembly instructions!

3.14 Screw 2.3x1.4

Follow the 2.2 – 2.6 Disassembly instructions!

Replace Screw 2.3x1.4 (torque 11Ncm)

Follow the 4.10 – 4.14 Reassembly instructions!



3.15 Screw Torx 5.3x1.6

Follow the 2.2 – 2.11 Disassembly instructions!

Replace Screw Torx 5.3x1.6 (torque 11Ncm)

Follow the 4.5 – 4.14 Reassembly instructions!

3.16 Screw Torx 5.0x1.6

Follow the 2.2 – 2.11 Disassembly instructions!

Replace Screw Torx 5.0x1.6 (torque 11Ncm)

Follow the 4.5 – 4.14 Reassembly instructions!

3.17 Screw Philips M1.4x1.7

Follow the 2.2 – 2.12 Disassembly instructions! And 3.62 Replacement Instructions!

Replace Flat Head M1.4x1.7 (torque 11Ncm)

Follow the 4.4 – 4.14 Reassembly instructions! And 3.62 Replacement Instructions!

3.18 Cap Plastic RF Keyboard Numeric

Follow the 2.2 – 2.5 Disassembly instructions!

Replace Cap Plastic RF Numeric Keyboard

Follow the 4.11 – 4.14 Reassembly instructions!

3.19 Cap Numeric Keyboard

Follow the 2.2 – 2.5 Disassembly instructions!

Replace Cap Numeric Keyboard

Follow the 4.11 – 4.14 Reassembly instructions!

3.20 Foil Adhesive Single Side 0.15 mm Flip Tape

Follow the 2.2 – 2.9 Disassembly instructions!

Replace Foil Adhesive Single Side 0.15 mm Flip Tape

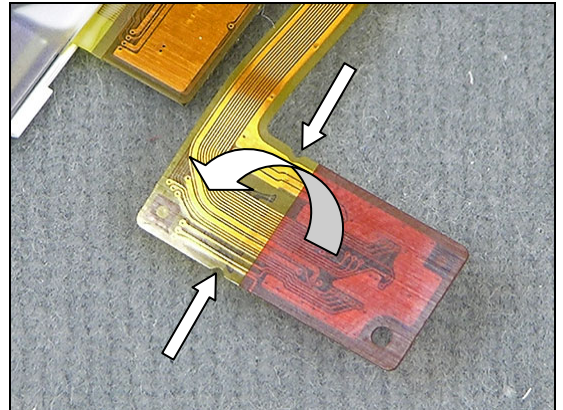
Follow the 4.7 – 4.14 Reassembly instructions!

3.21 Display 2.41 TFT

Follow the 2.2 – 2.7 Disassembly instructions!

Fold the Display Flex between the cutouts.
Replace Display 2.41 TFT

Follow the 4.9 – 4.14 Reassembly instructions!



3.22 Cover Flip Inner Metal

Removal

Follow the 2.3 Disassembly instructions!

Use a Guitar Pick to loosen the Cover Flip Inner Metal. Use your fingers to remove the Cover Flip Inner Metal.



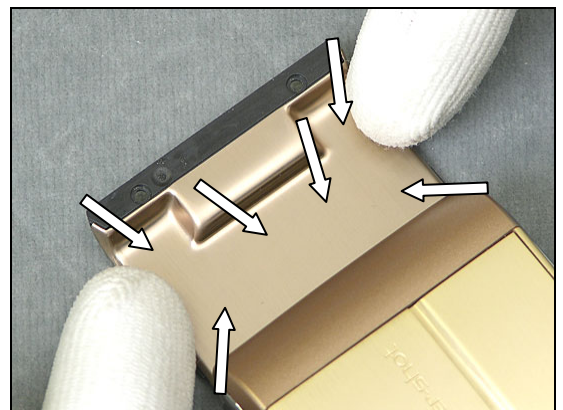
Installation

Use your fingers to place the Cover Flip Inner Metal.



Use your fingers to attach the Cover Flip Inner Metal. Press with your fingers on the entire surface

Follow the 4.13 Reassembly instructions!



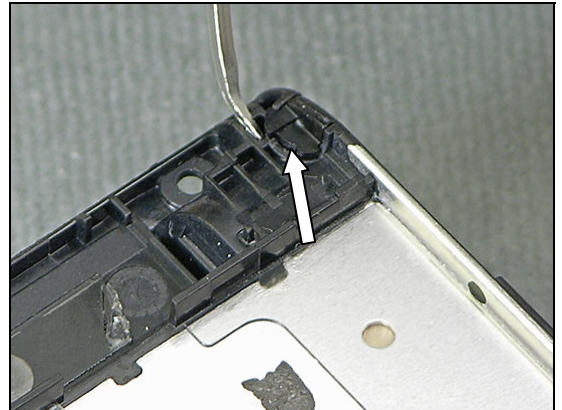


3.23 Cap Reinforcement Plug (Right and Left)

Removal (Right)

Follow the 2.2 – 2.9 Disassembly instructions!

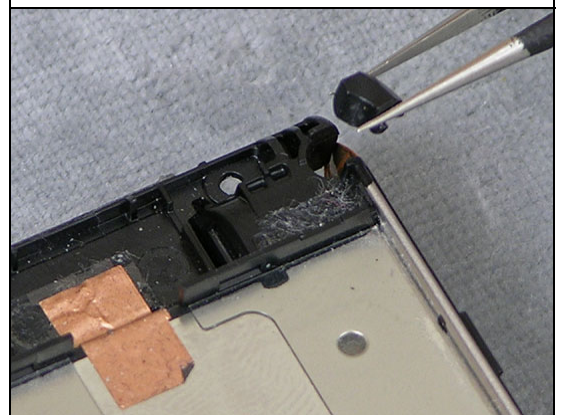
Use a dentist hook to remove the Cap Reinforcement Plug Right.



Installation

Use a pair of ESD Tweezers to attach the Cap Reinforcement Plug (Right)

Follow the 4.7 – 4.14 Reassembly instructions!



Removal (Left)

Follow the 2.2 – 2.9 Disassembly instructions!

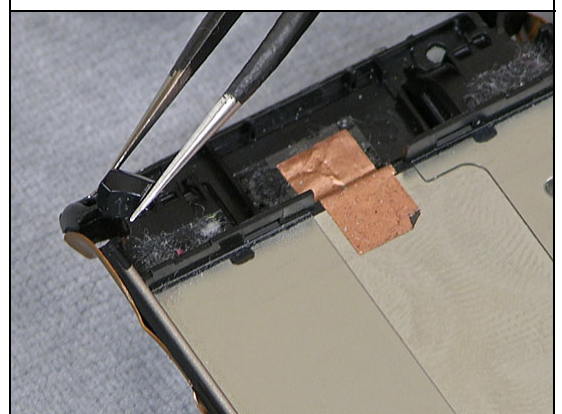
Use a dentist hook to remove the Cap Reinforcement Plug Left.



Installation

Use a pair of ESD Tweezers to attach the Cap Reinforcement Plug (Right)

Follow the 4.7 – 4.14 Reassembly instructions!



3.24 Numeric Key Foil

Removal

Follow the 2.2 – 2.12 Disassembly instructions!

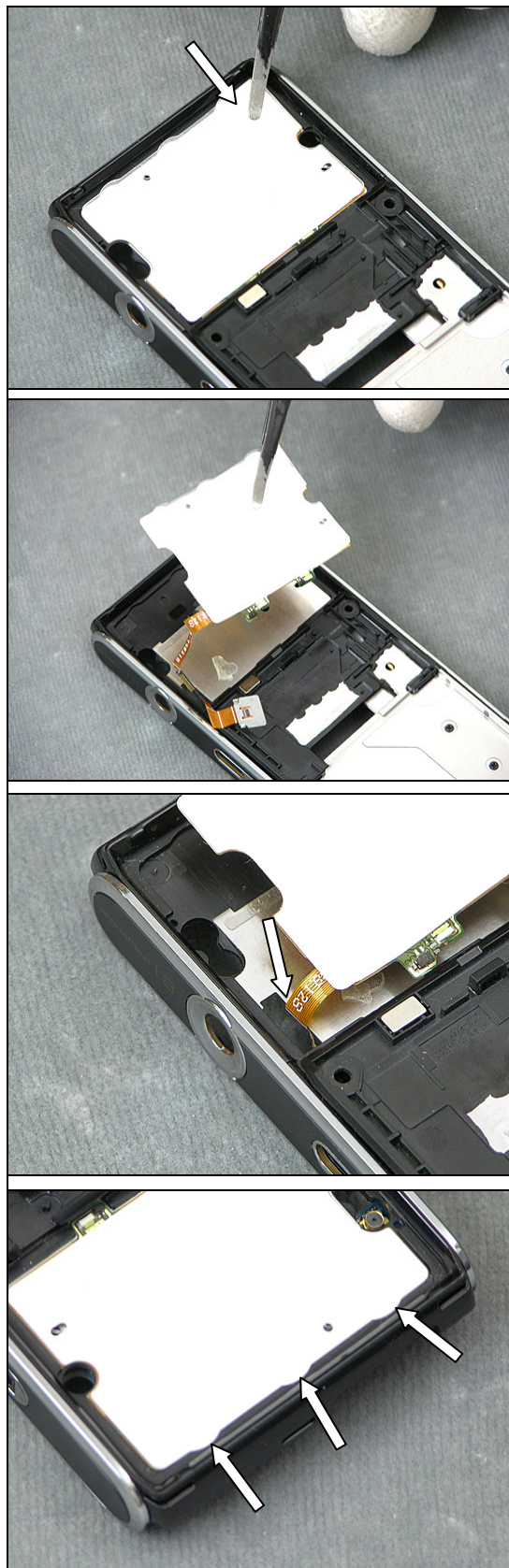
Use a blunt pair of Tweezers to remove the Light GU Numeric.

Use a Flex Film Assembly Tool to remove the Numeric Key Foil.

Installation

Use your fingers to position the Numeric Key Foil.

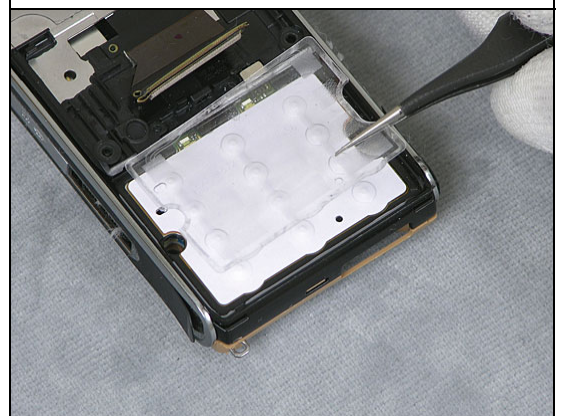
MAKE SURE THE ALIGNMENT IS CORRECT!



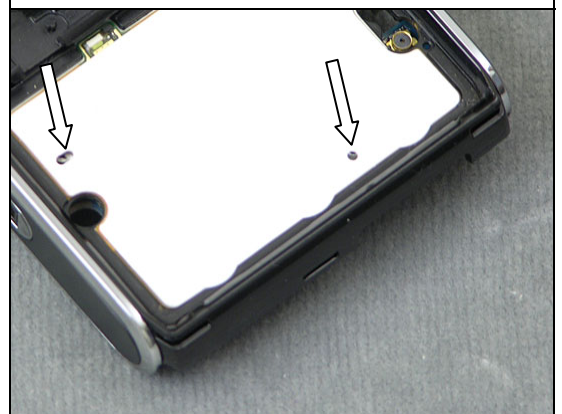
Use your fingers to attach the Numeric Key Foil



Use a pair of ESD Tweezers to position the Light GU Numeric

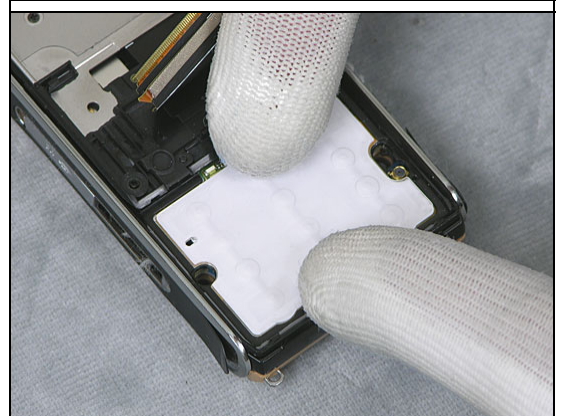


MAKE SURE THE ALIGNMENT IS CORRECT!



Use your fingers to attach the Light Gu Numeric

Follow the 4.4 – 4.14 Reassembly instructions!

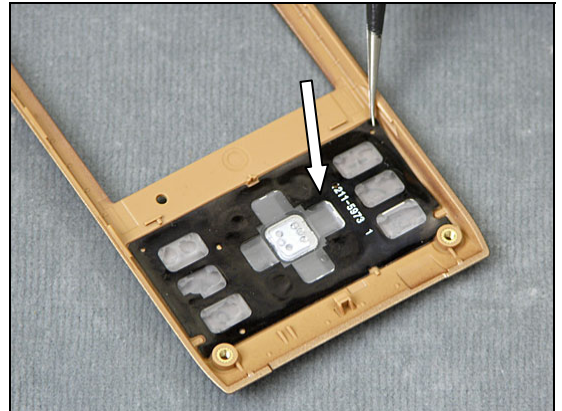


3.25 Keyboard Navigation

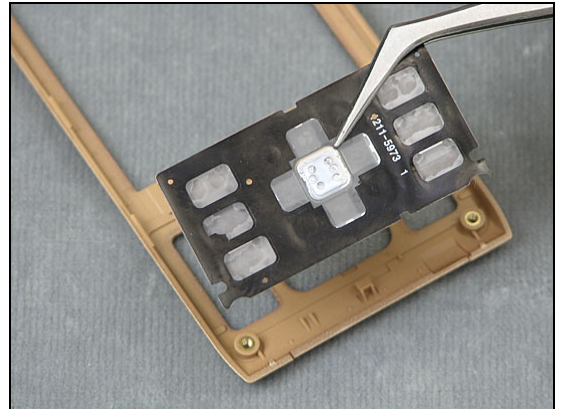
Removal

Follow the 2.2 – 2.6 Disassembly instructions!

Use a pair of ESD Tweezers to loosen the Keyboard Navigation from the Cover Flip Front.



Use a pair of ESD Tweezers to remove the Keyboard Navigation from the Cover Flip Front.



Installation

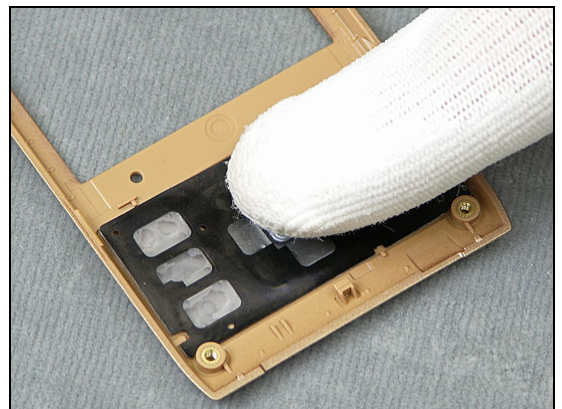
Use your fingers to position the center of the Keyboard Navigation on the Cover Flip Front.

BE CAREFUL NOT TO TOUCH THE ADHESIVE!



Use your fingers to attach the Keyboard Navigation.

Follow the 4.10 – 4.14 Reassembly instructions!

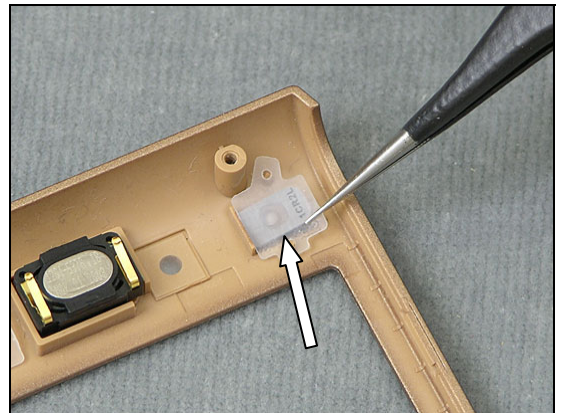


3.26 Key A/B Left

Removal

Follow the 2.2 – 2.6 Disassembly instructions!

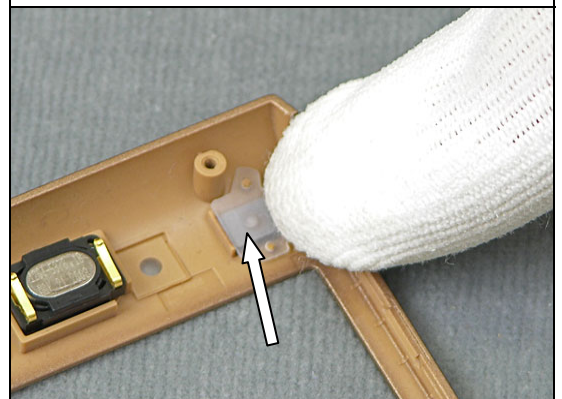
Use a pair of ESD Tweezers to remove the Key A/B Left from the Cover Flip Front.



Installation

Use your fingers to attach the Key A/B Left on the Cover Flip Front.

Follow the 4.10 – 4.14 Reassembly instructions!

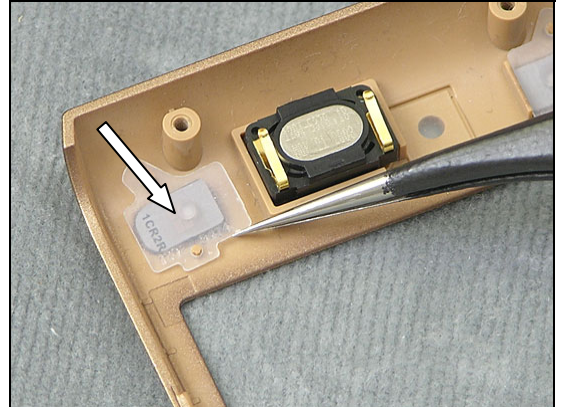


3.27 Key A/B Right

Removal

Follow the 2.2 – 2.6 Disassembly instructions!

Use a pair of ESD Tweezers to remove the Key A/B Right from the Cover Flip Front.



Installation

Use your fingers to attach the Key A/B Right on the Cover Flip Front.

Follow the 4.10 – 4.14 Reassembly instructions!





3.28 Co Brand Label

Removal

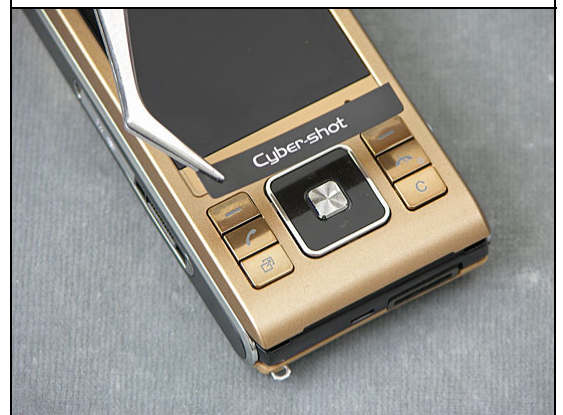
BE CAREFUL NOT TO DAMAGE THE COVER FLIP FRONT!

No disassembly needed!

Use a Dentist Hook to loosen the Co Brand Label.

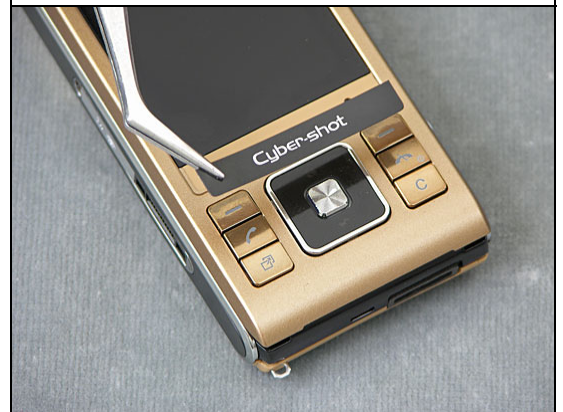


Use a pair of ESD Tweezers to remove the Co Brand Label.



Installation

Use a pair of ESD Tweezers to place the Co Brand Label.



Use your fingers to attach the Co Brand Label.

No reassembly needed!

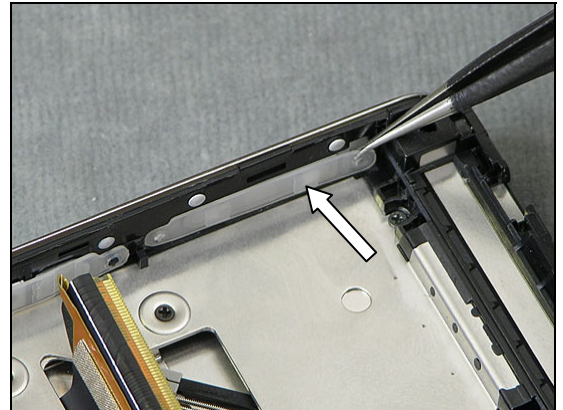


3.29 Key Volume

Removal

Follow the 2.2 – 2.12 Disassembly instructions!

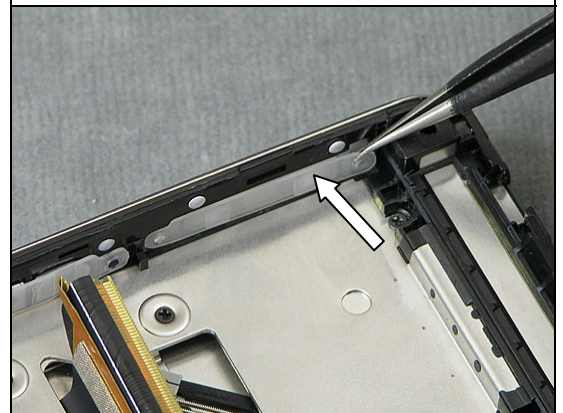
Use a pair of ESD Tweezers to remove the Key Volume.



Installation

Use a pair of ESD Tweezers to position the Key Volume.

Follow the 4.4 – 4.14 Reassembly instructions!

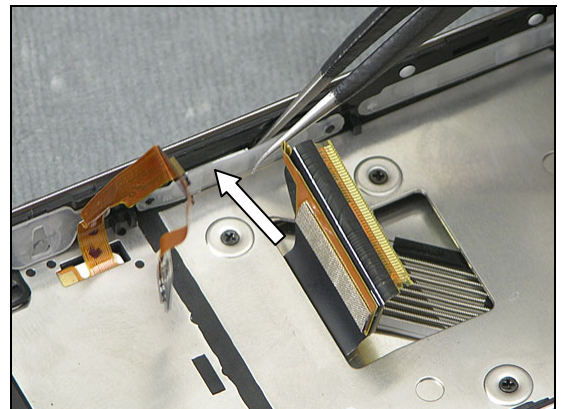


3.30 Key Mode

Removal

Follow the 2.2 – 2.12 Disassembly instructions!

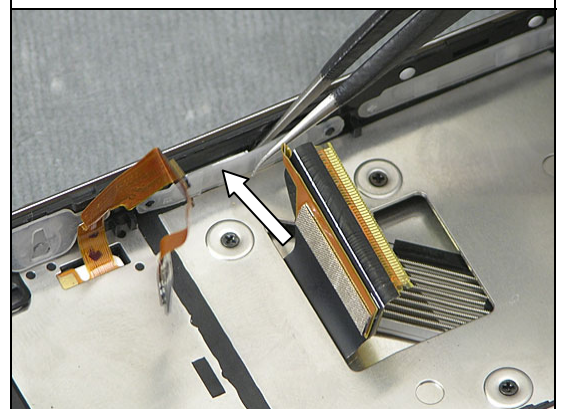
Use a pair of ESD Tweezers to remove the Key Mode.



Installation

Use a pair of ESD Tweezers to position the Key Mode.

Follow the 4.4 – 4.14 Reassembly instructions!



3.31 Key Camera

Removal

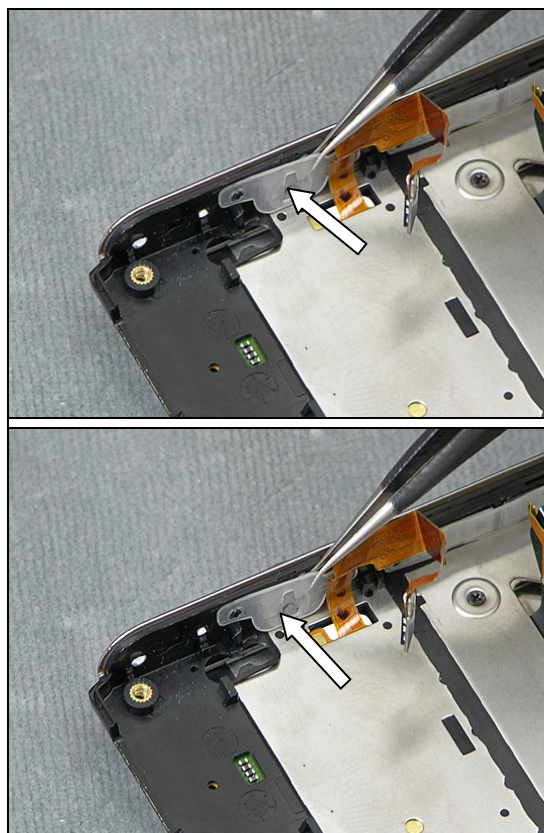
Follow the 2.2 – 2.12 Disassembly instructions!

Use a pair of ESD Tweezers to remove the Key Camera.

Installation

Use a pair of ESD Tweezers to position the Key Camera.

Follow the 4.4 – 4.14 Reassembly instructions!



3.32 M2 Lid

Removal

Follow the 2.2 – 2.11 Disassembly instructions!

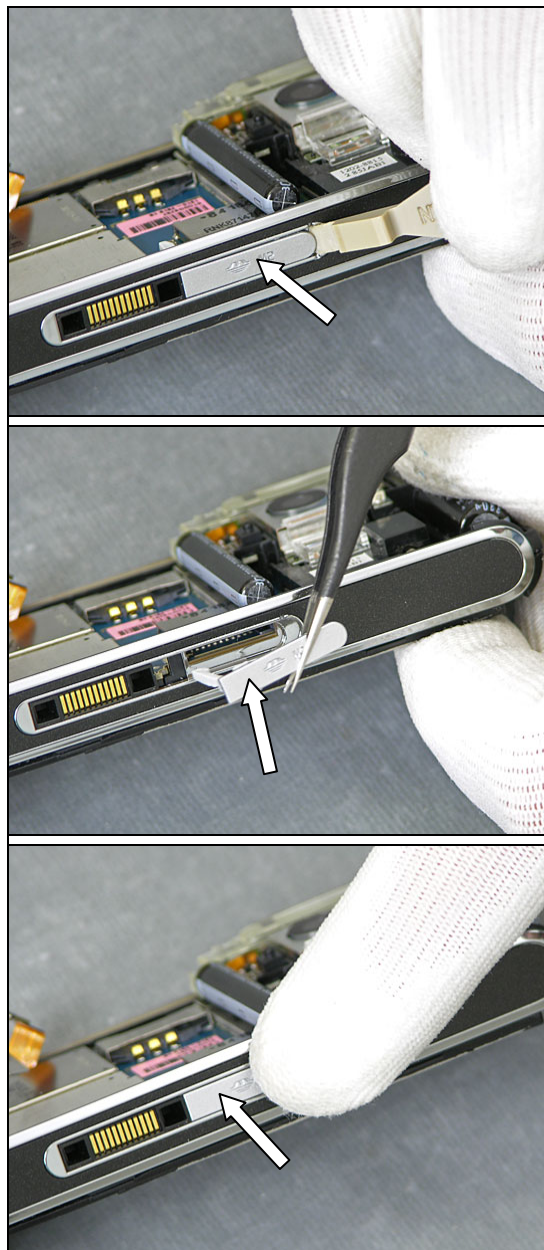
Open the M2 Lid.

Use a pair of ESD Tweezers to remove the M2 Lid.

Installation

Use your fingers to position the M2 Lid.

Follow the 4.5 – 4.14 Reassembly instructions!



3.33 Microphone Gasket

Removal

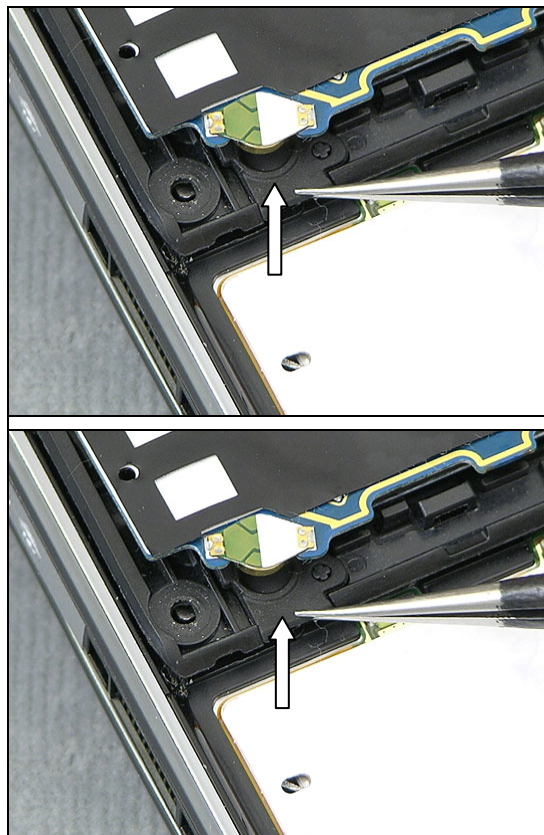
Follow the 2.2 – 2.6 Disassembly instructions!

Use a pair of ESD Tweezers to remove the Microphone Gasket.

Installation

Use a pair of ESD Tweezers to position the Microphone Gasket.

Follow the 4.10 – 4.14 Reassembly instructions!

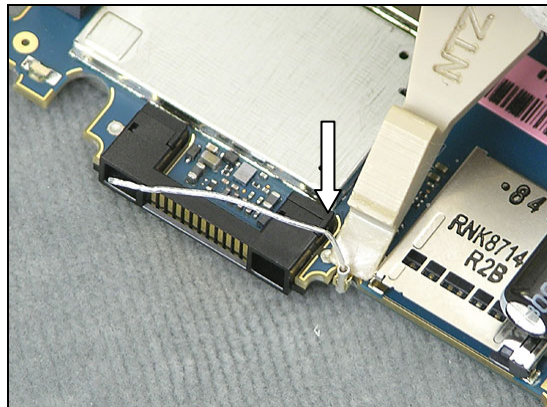


3.34 BT/WLAN Antenna

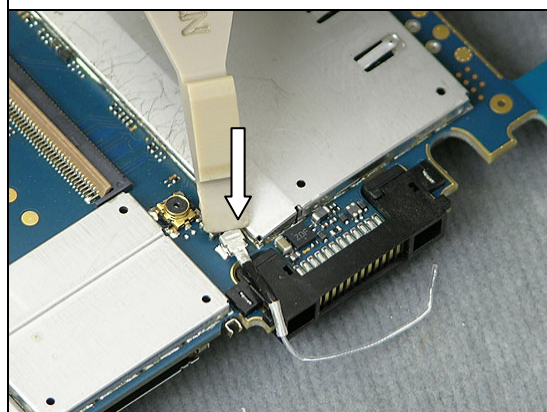
Removal

Follow the 2.2 – 2.12 Disassembly instructions!

Use a Front Opening Tool to loosen the BT/WLAN Antenna.



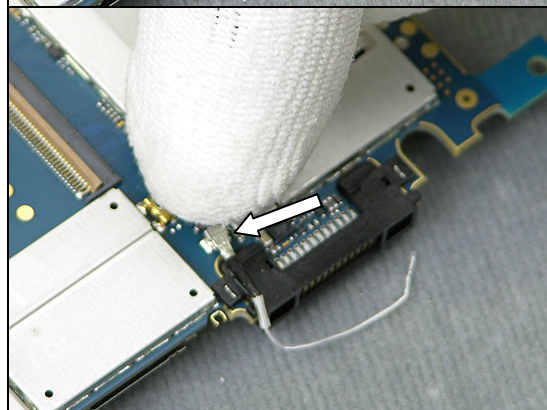
Use a Front Opening Tool to disconnect the BT/WLAN Antenna.



Installation

Use your fingers to connect the BT/WLAN Antenna.

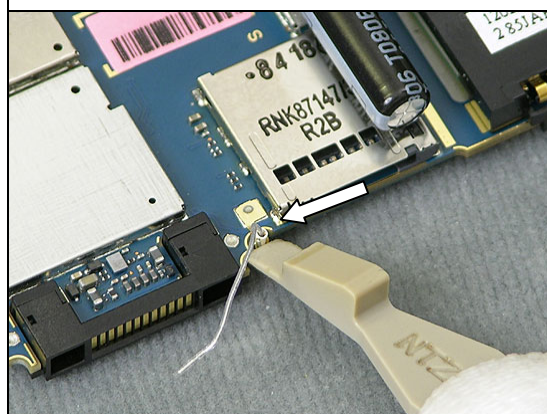
MAKE SURE THE BT/WLAN ANTENNA IS COMPLETELY CONNECTED!



Use a Front Opening Tool to attach the BT/WLAN Antenna

MAKE SURE THE BT/WLAN ANTENNA IS COMPLETELY HELD BY THE CLIP!

Follow the 4.4– 4.14 Reassembly instructions!



3.35 Left Sidepanel

Removal

No Disassembly needed!

Use a Dentist Hook to remove the Left Sidepanel.



Installation

Use a Flex Film Assembly Tool to position the Left Sidepanel.



Use your fingers to attach the Left Sidepanel

No Reassembly needed!

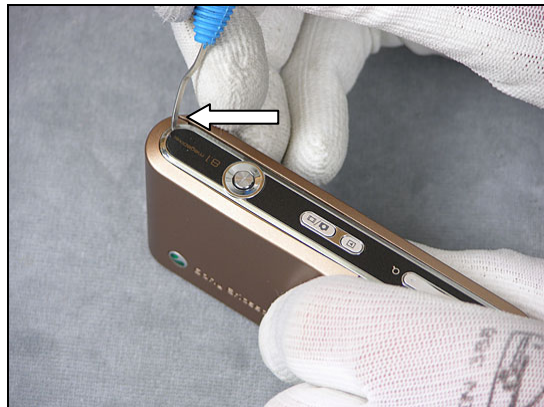


3.36 Right Sidepanel Bottom

Removal

No Disassembly needed!

Use a Dentist Hook to remove the Right Sidepanel Bottom.



Installation

Use a Flex Film Assembly Tool to position the Right Sidepanel Bottom.



Use your fingers to attach the Right Sidepanel Bottom

No Reassembly needed!

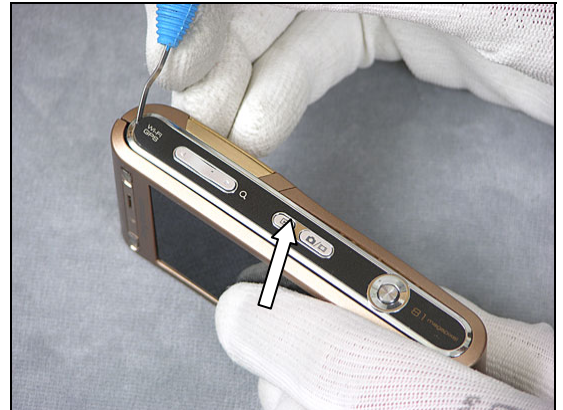


3.37 Right Sidepanel Top

Removal

No Disassembly needed!

Use a Dentist Hook to loosen the Right Sidepanel Top



Use a Flex Film Assembly Tool to remove the Right Sidepanel Top



Installation

Use a Flex Film Assembly Tool to position the Right Sidepanel Top



Use your fingers to attach the Right Sidepanel Top

No Reassembly needed!

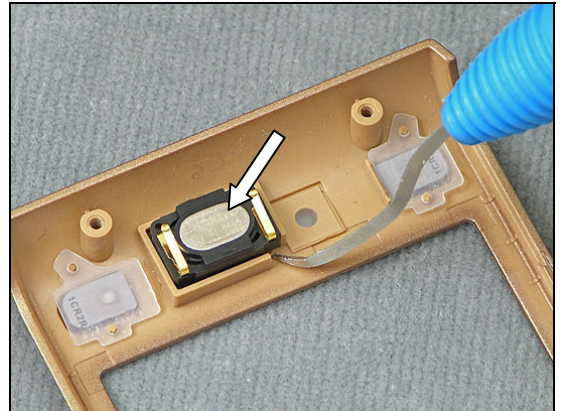


3.38 Ear Speaker

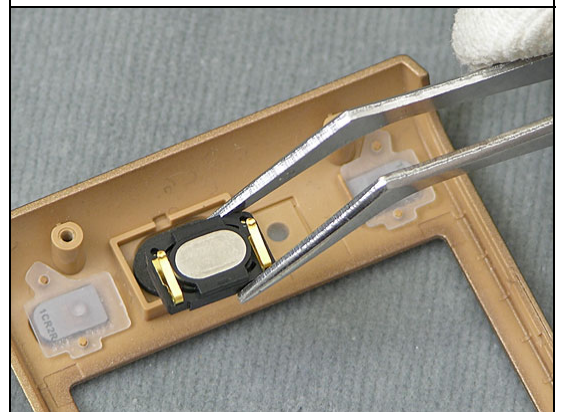
Removal

Follow the 2.2 – 2.6 Disassembly instructions!

Use a Dentist Hook to loosen the Ear Speaker.



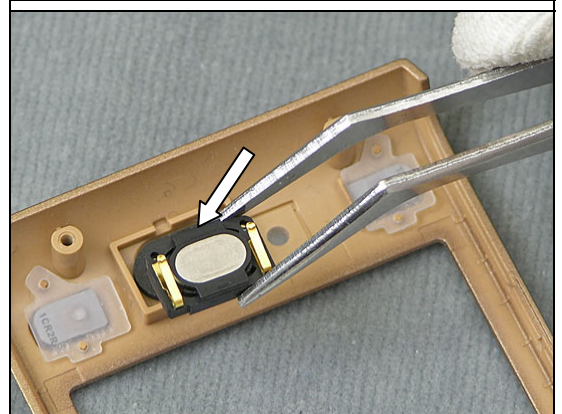
Use a pair of ESD Tweezers to remove the Ear Speaker.



Installation

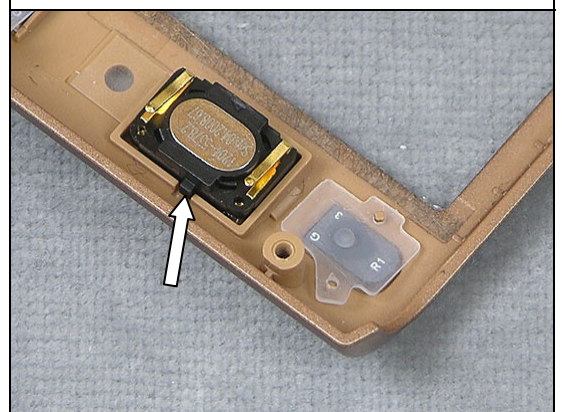
Use a pair of ESD Tweezers to place the Ear Speaker.

MAKE SURE TO ALIGN THE SPEAKER PROPERLY! SEE ARROW!



**MAKE SURE TO ALIGN THE SPEAKER PROPERLY!
DO NOT TOUCH THE SPRINGS ON THE EAR SPEAKER!**

Follow the 4.10 – 4.14 Reassembly instructions!

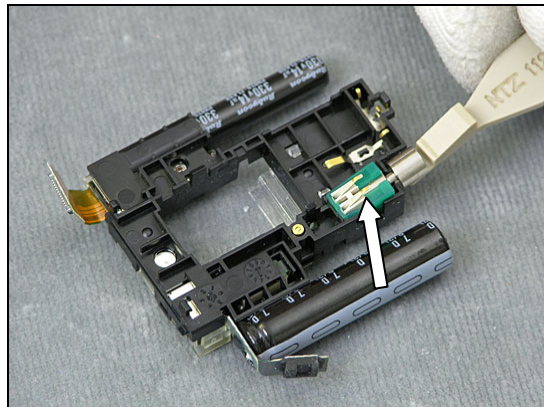


3.39 Vibrator

Removal

Follow the 2.2 – 2.14 Disassembly instructions!

Use a Front Opening Tool to remove Vibrator.



Installation

Use a pair of ESD Tweezers to position the Vibrator.



Use a Front Opening Tool to attach the Vibrator.

DO NOT TOUCH THE SPRINGS ON THE VIBRATOR!

Follow the 4.2 – 4.14 Reassembly instructions!

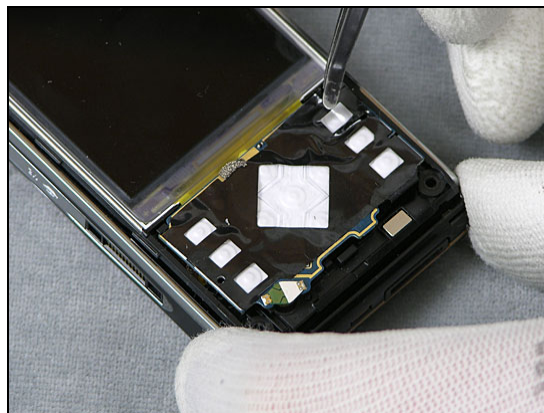


3.40 Light GU Navigation

Removal

Follow the 2.2 – 2.6 Disassembly instructions!

Use a Flex Film Assembly Tool to remove the Light GU Navigation



Installation

Use a Flex Film Assembly Tool to position the Light GU Navigation in the Navifoil Pressure Clip (*continues in 3.41*)

Follow the 4.10 – 4.14 Reassembly instructions!

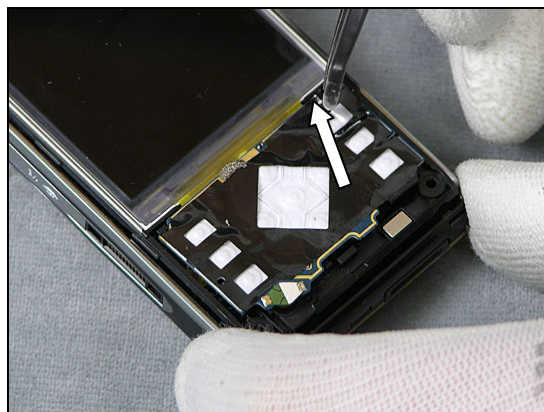


3.41 Dome Foil Flip

Removal

Follow the 2.2 – 2.6 Disassembly instructions!

Use a Flex Film Assembly Tool to remove the Light GU Navigation



Use a Flex Film Assembly Tool to remove the Dome Foil Flip



Installation

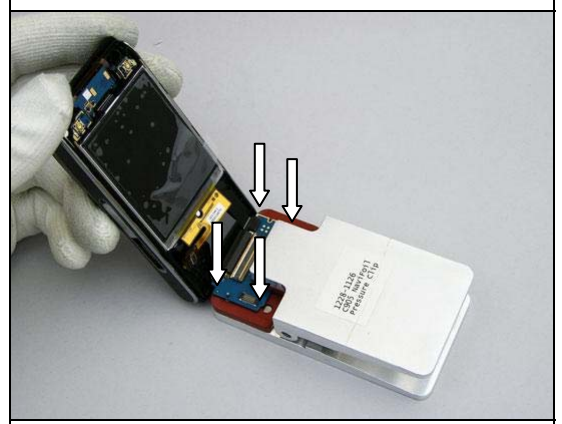
Use a Flex Film Assembly Tool to position the Light GU Navigation in the Navifoil Pressure Clip



Use a Flex Film Assembly Tool to position the Dome Foil Flip on the Light GU Navigation in the Navifoil Pressure Clip



Use a Flex Film Assembly Tool to position PBA Key Flex in the Navifoil Pressure Clip. When positioned in the Navifoil Pressure Clip let the tool press together and let the assembly stay in the tool for 15 seconds will pressing with your fingers on the PBA Key Flex (see arrows)



3.42 PBA Key Flex Flip Complete

Removal

Follow the 2.2 – 2.9 Disassembly instructions!

Installation

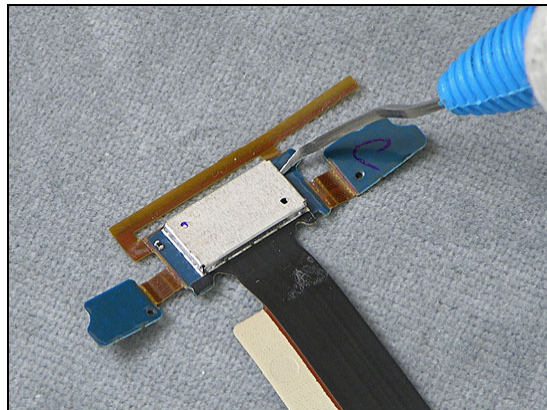
Follow the 4.7 – 4.14 Reassembly instructions!

3.43 Shield Can Lid Flip

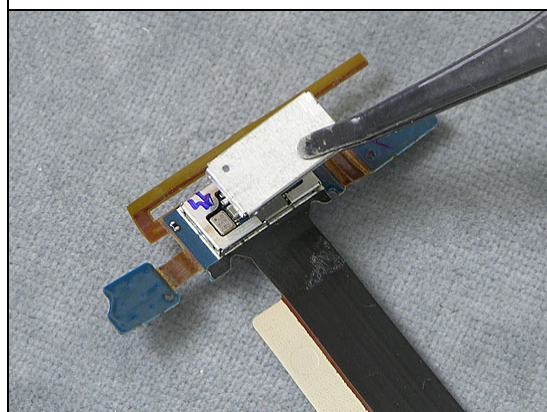
Removal

Follow the 2.2 – 2.9 Disassembly instructions!

Use a Dentist Hook to loosen the Shield Can Lid Flip

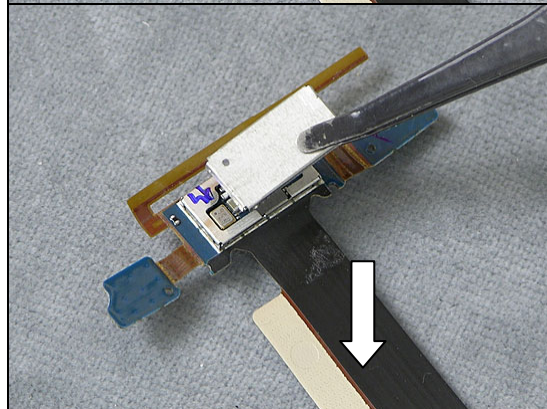


Use a Flex Film Assembly Tool to remove the Shield Can Lid Flip



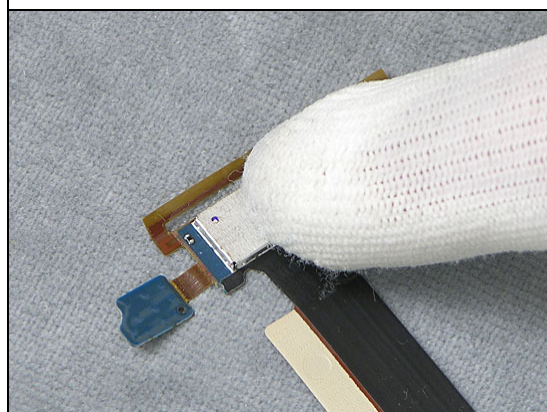
Installation

Use a Flex Film Assembly Tool to position the Shield Can Lid Flip



Use your fingers to attach the Shield Can Lid Flip

Follow the 4.7 – 4.14 Reassembly instructions!



3.44 Cushion 1,0mm1,3x5,1,0 Conductive

Removal

Follow the 2.2 – 2.6 Disassembly instructions!

Use a Pair of ESD Tweezers to remove the Cushion
1,0mm1,3x5,1,0 Conductive

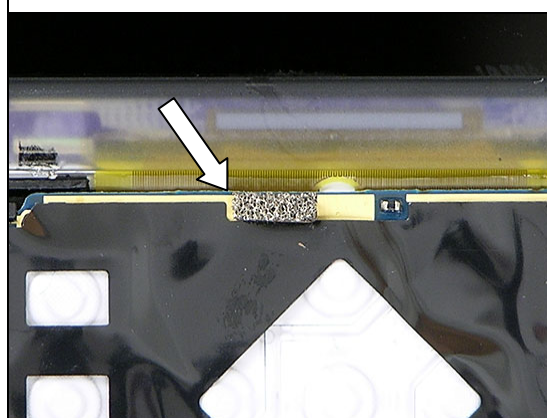


Installation

Use a Pair of ESD Tweezers to attach the Cushion
1,0mm1,3x5,1,0 Conductive

MAKE SURE THE ALIGNMENT IS CORRECT!

Follow the 4.10 – 4.14 Reassembly instructions!



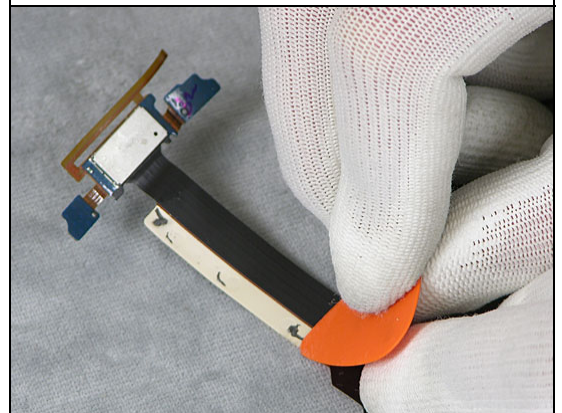
3.45 Foil Adhesive 0.048 mm Flex Flip

Removal

Follow the 2.2 – 2.9 Disassembly instructions!

Use a Guitar Pick to peel off the Foil Adhesive 0.048 mm Flex Flip

Use a Guitar Pick to peel off the Foil Adhesive 0.048 mm Flex Flip from the PBA Key Flex Flip Complete

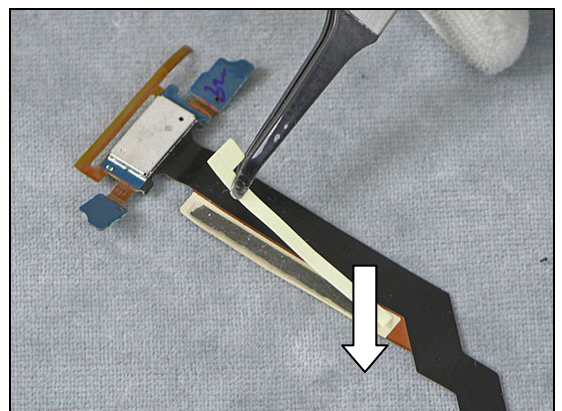
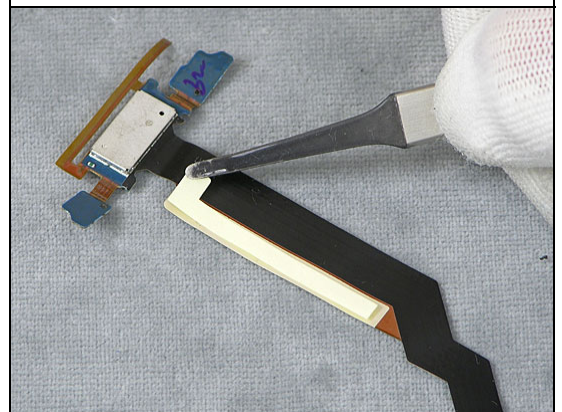


Installation

Use a Flex Film Assembly Tool to position the Foil Adhesive 0.048 mm Flex Flip on the PBA Key Flex Flip Complete

Use a Flex Film Assembly Tool to remove the protection tape from the Foil Adhesive 0.048 mm Flex Flip

Follow the 4.7 – 4.14 Reassembly instructions!



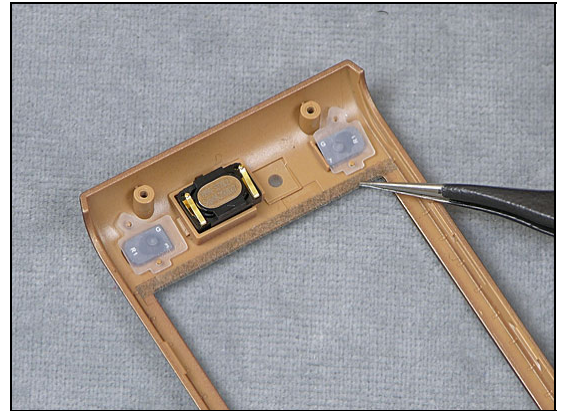


3.46 Foil Adhesive Conductive 0.05 mm protection tape, front

Removal

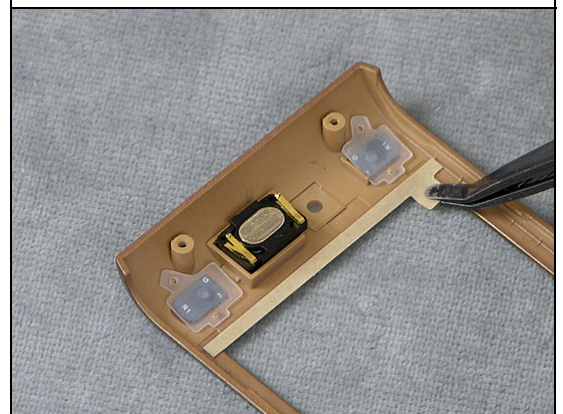
Follow the 2.2 – 2.6 Disassembly instructions!

Use a pair of ESD Tweezers to remove the Foil Adhesive Conductive 0.05 mm protection tape, front



Installation

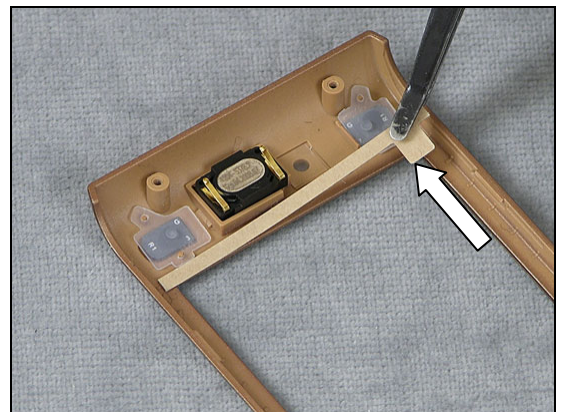
Use a Flex Film Assembly Tool to position the Foil Adhesive Conductive 0.05 mm protection tape, front



Use a Flex Film Assembly Tool to remove the protection tape from the Foil Adhesive Conductive 0.05 mm protection tape, front

MAKE SURE THE FOIL ADHESIVE CONDUCTIVE 0.05 MM GPS ESD PROTECTION TAPE, FRONT COMPLETELY COVER THE COVER FLIP FRONT!

Follow the 4.10 – 4.14 Reassembly instructions!



3.47 Foil Adh Conduct GPS ESD protection tape

Removal

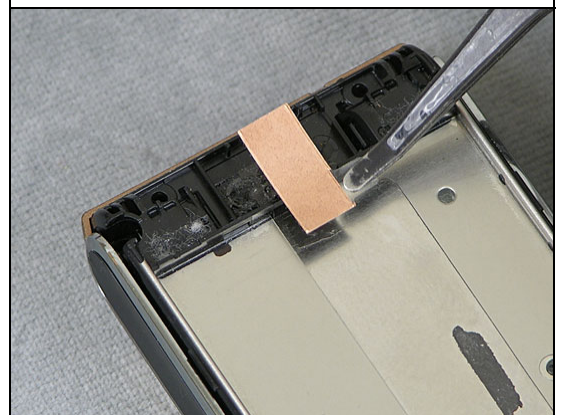
Follow the 2.2 – 2.9 Disassembly instructions!

Use a Dentist Hook to remove the Foil Adh Conduct GPS ESD protection tape



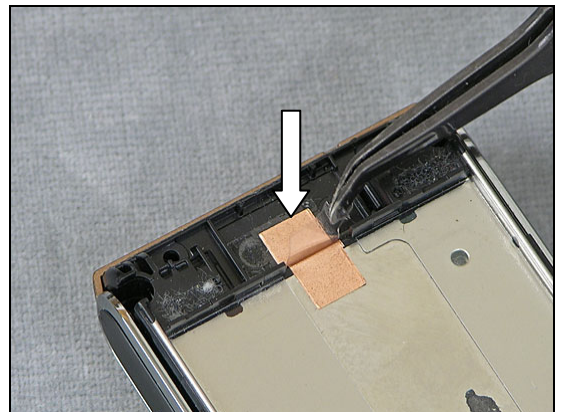
Installation

Use a Flex Film Assembly Tool to position the Foil Adh Conduct GPS ESD protection tape



Use a Flex Film Assembly Tool to attach the Foil Adh Conduct GPS ESD protection tape

Follow the 4.7 – 4.14 Reassembly instructions!





3.48 Foil Adhesive Double Side GPS Shieldcan

Removal

Follow the 2.2 – 2.9 Disassembly instructions!

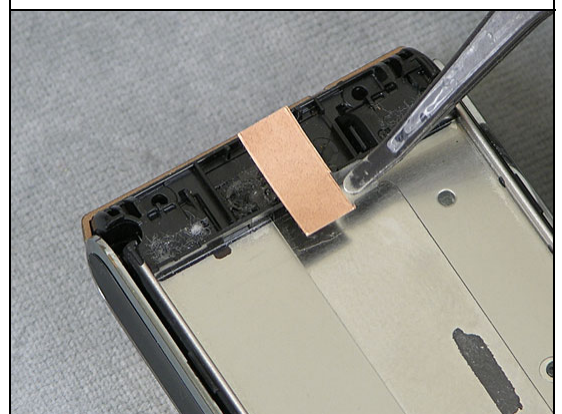
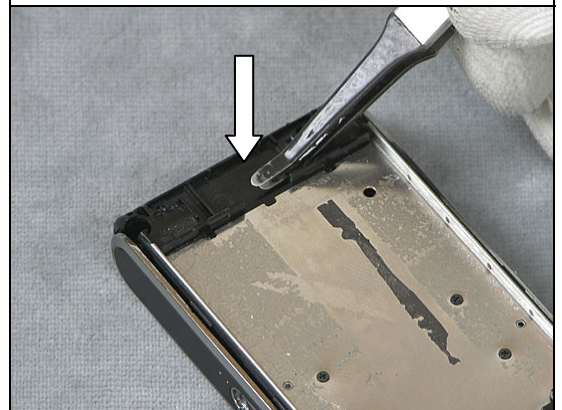
Use a Dentist Hook to remove the Foil Adhesive Conductive GPS ESD protection tape,

Use a Dentist Hook to remove the Foil Adhesive Double Side GPS Shieldcan

Installation

Use a Flex Film Assembly Tool to position the Foil Adhesive Double Side GPS Shieldcan

Use a Flex Film Assembly Tool to position the Foil Adhesive Conductive GPS ESD protection tape



Use a Flex Film Assembly Tool to attach the Foil Adhesive Conductive GPS ESD protection tape

Follow the 4.7 – 4.14 Reassembly instructions!

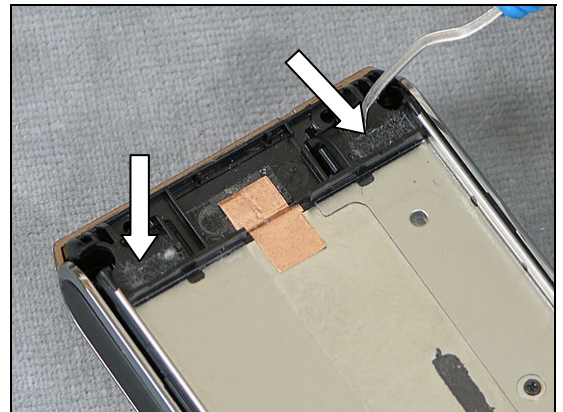


3.49 Foil Adhesive Double Side A/B Flex Tape

Removal

Follow the 2.2 – 2.9 Disassembly instructions!

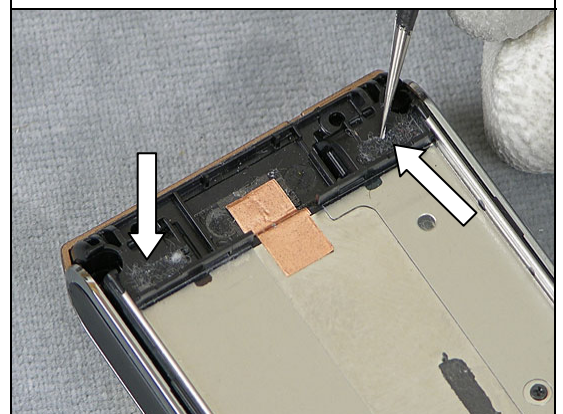
Use a Dentist Hook remove the two Foil Adhesive Double Side A/B Flex Tape



Installation

Use a pair of ESD Tweezers to attach the two Foil Adhesive Double Side A/B Flex Tape

Follow the 4.7 – 4.14 Reassembly instructions!

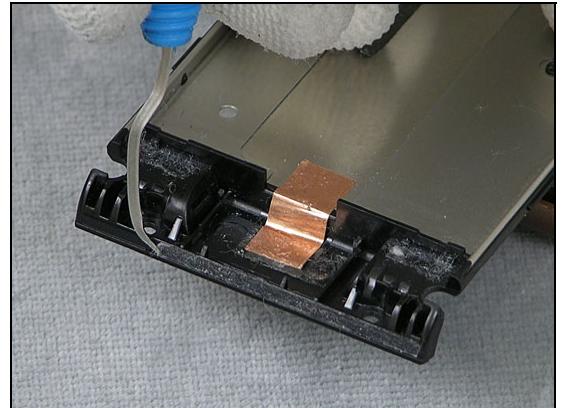


3.50 Foil Adhesive Double Side GPS Antenna

Removal

Follow the 2.2 – 2.9 Disassembly instructions!

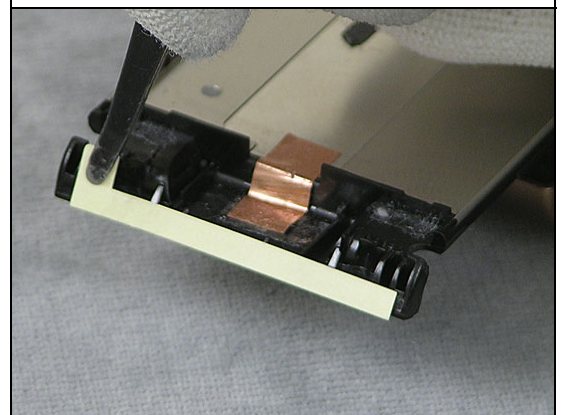
Use a Dentist Hook remove the Foil Adhesive Double Side GPS Antenna



Installation

Use a Flex Film Assembly Tool to position and attach the Foil Adhesive Double Side GPS Antenna. Remove the Protection tape from the Foil Adhesive Double Side GPS Antenna

Follow the 4.7 – 4.14 Reassembly instructions!

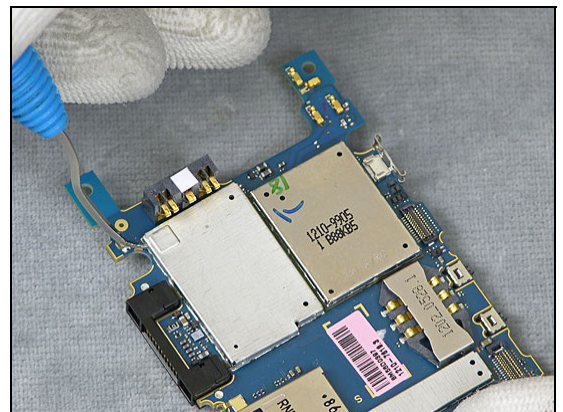


3.51 Shield can lid, Vera

Removal

Follow the 2.2 – 2.13 Disassembly instructions!

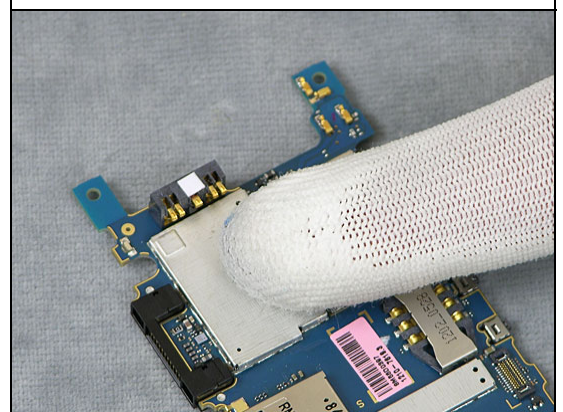
Use a Dentist Hook to remove the Shield Can Lid, Vera



Installation

Use your fingers to attach the Shield Can Lid, Vera

Follow the 4.3 – 4.14 Reassembly instructions!

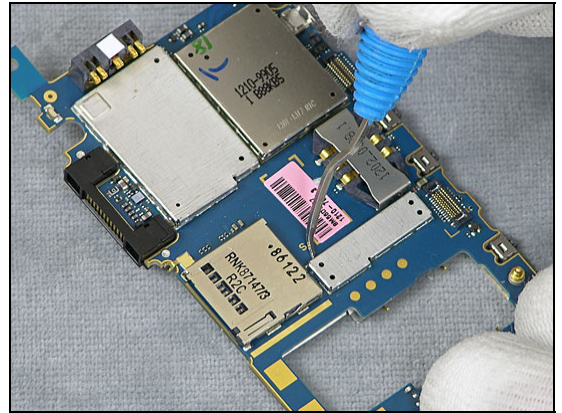


3.52 Shield can lid, regulator

Removal

Follow the 2.2 – 2.14 Disassembly instructions!

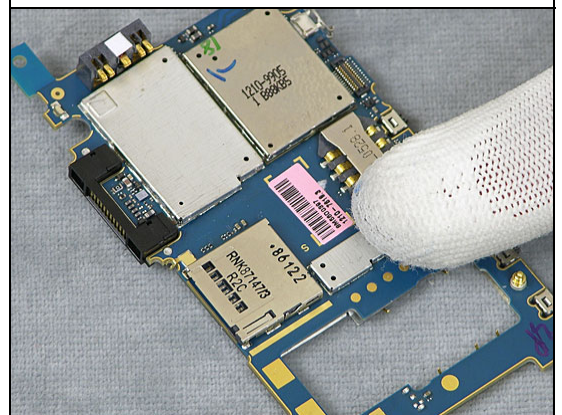
Use a Dentist Hook to remove the Shield Can Lid, regulator



Installation

Use your fingers to attach the Shield Can Lid, regulator

Follow the 4.2 – 4.14 Reassembly instructions!

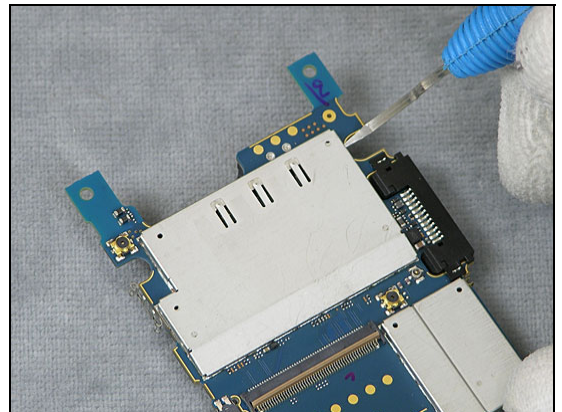


3.53 Shield can lid, Kajsa

Removal

Follow the 2.2 – 2.13 Disassembly instructions!

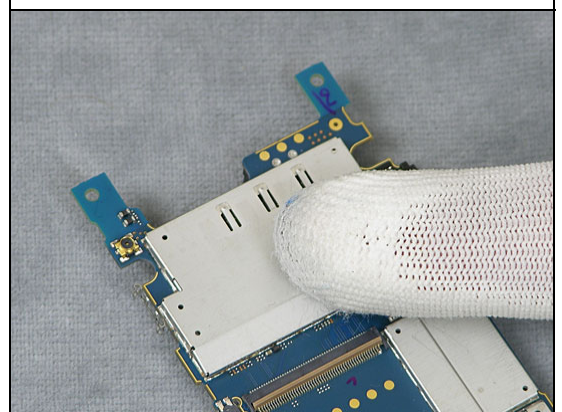
Use a Dentist Hook to remove the Shield Can Lid, Kajsa



Installation

Use your fingers to attach the Shield Can Lid, Kajsa

Follow the 4.3 – 4.14 Reassembly instructions!

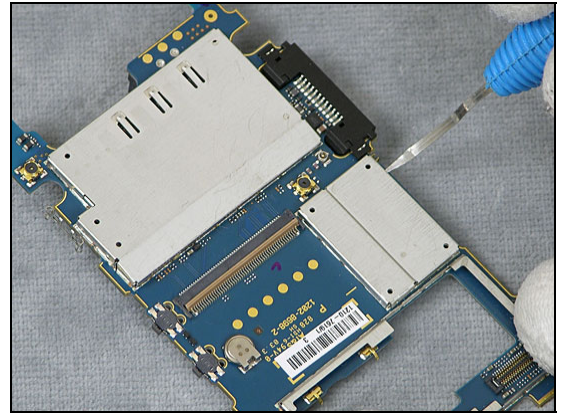


3.54 Shield can lid, WLAN

Removal

Follow the 2.2 – 2.14 Disassembly instructions!

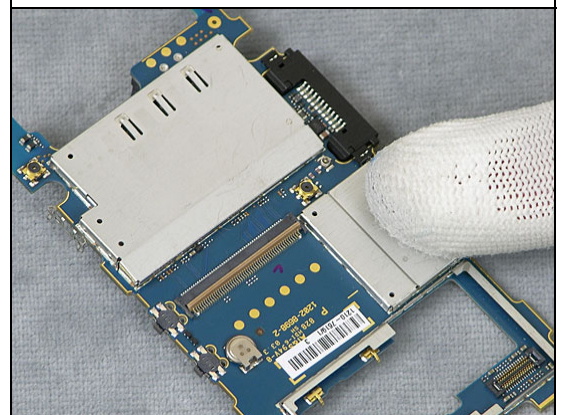
Use a Dentist Hook to remove the Shield Can Lid, WLAN



Installation

Use your fingers to attach the Shield Can Lid, WLAN

Follow the 4.2 – 4.14 Reassembly instructions!

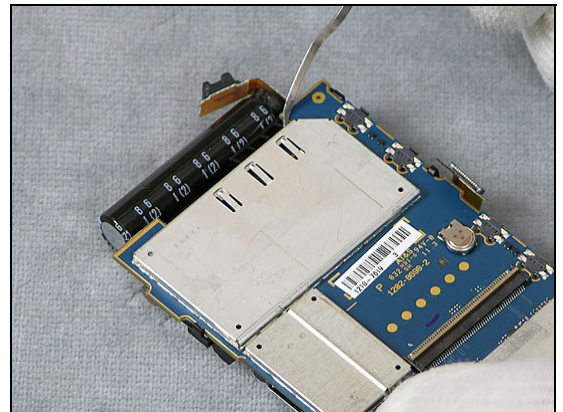


3.55 Shield Can Lid, Camera

Removal

Follow the 2.2 – 2.12 Disassembly instructions!

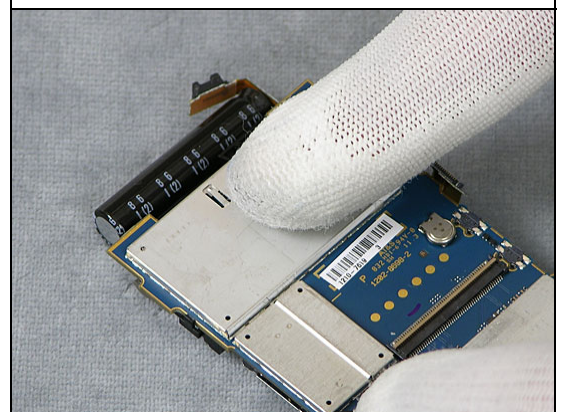
Use a Dentist Hook to remove the Shield Can Lid, Camera



Installation

Use your fingers to attach the Shield Can Lid, Camera

Follow the 4.4 – 4.14 Reassembly instructions!

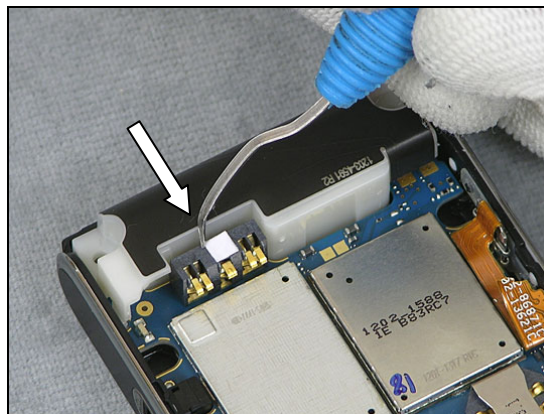


3.56 Liquid Intrusion Indicator (1 and 2)

Removal (1)

Follow the 2.2 – 2.11 Disassembly instructions!

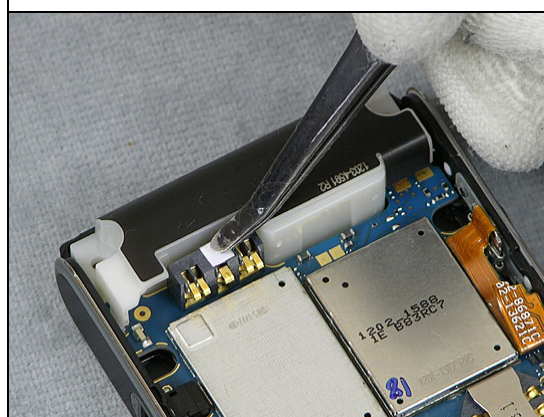
Use a Dentist Hook to remove the Liquid Intrusion Indicator



Installation (1)

Use a Flex Film Assembly Tool to attach the Liquid Intrusion Indicator

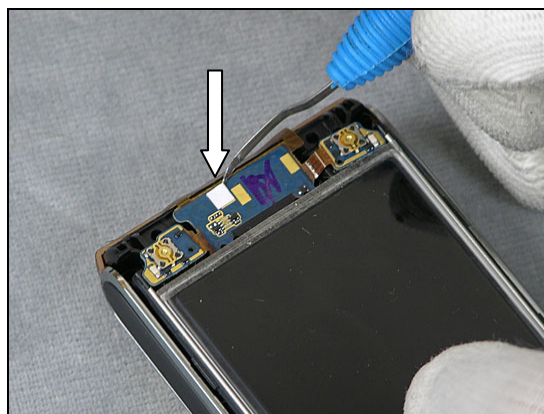
Follow the 4.5 – 4.14 Reassembly instructions!



Removal (2)

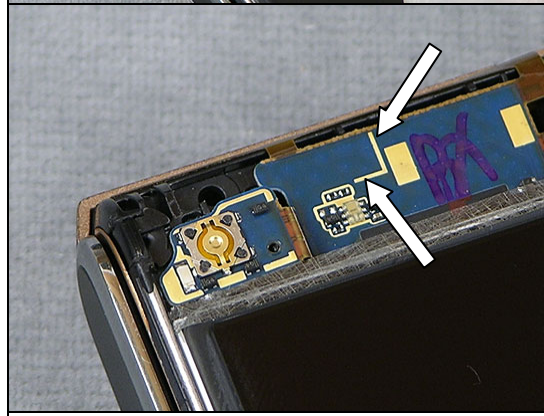
Follow the 2.2 – 2.6 Disassembly instructions!

Use a Dentist Hook to remove the Liquid Intrusion Indicator



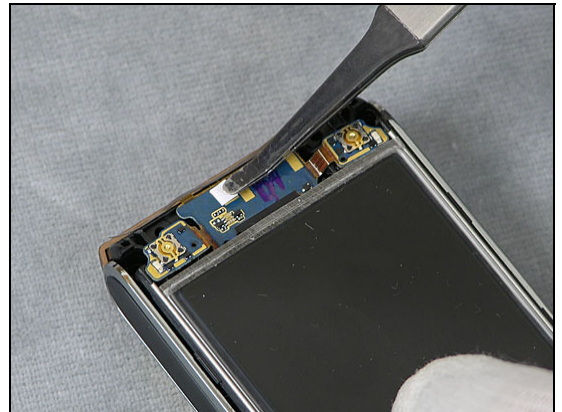
Installation (2)

MAKE SURE THE LIQUID INTRUSION INDICATOR IS WITHIN THE LINES!



Use a Flex Film Assembly Tool to attach the Liquid Intrusion Indicator

Follow the 4.10 – 4.14 Reassembly instructions!



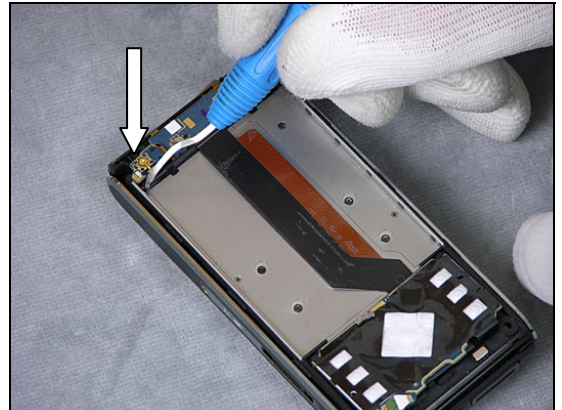


3.57 Foil Adhesive LCD Support, left

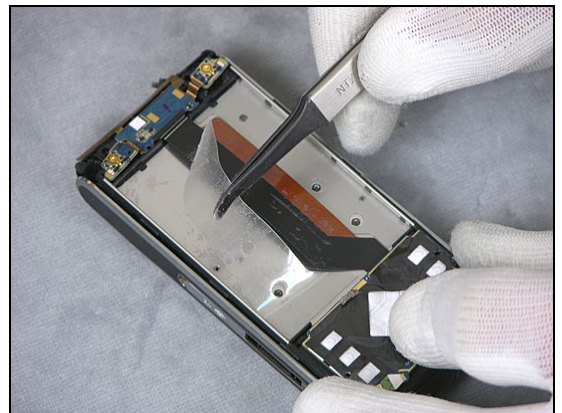
Removal

Follow the 2.2 – 2.8 Disassembly instructions!

Use a Dentist Hook to loosen the Foil Adhesive LCD Support, left

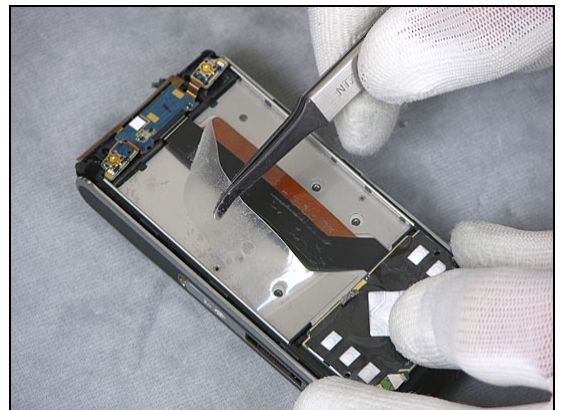


Use a Flex Film Assembly Tool to remove the Foil Adhesive LCD Support, left



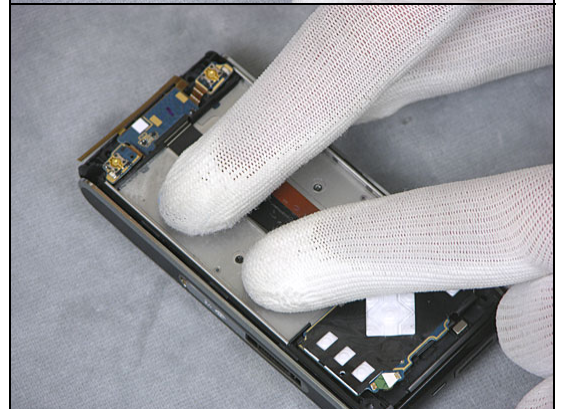
Installation

Use a Flex Film Assembly Tool to position the Foil Adhesive LCD Support, left



Use a your fingers to attach the Foil Adhesive LCD Support, left

Follow the 4.8 – 4.14 Reassembly instructions!



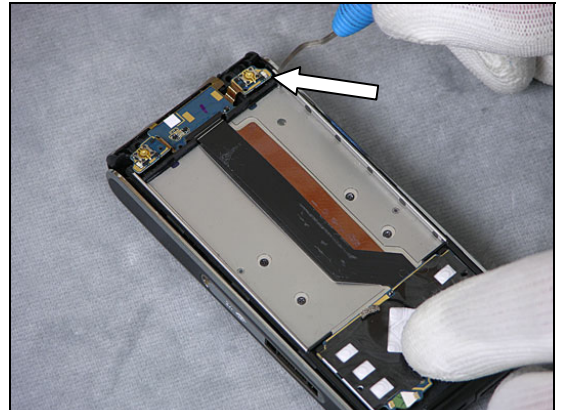


3.58 Foil Adhesive LCD Support, right

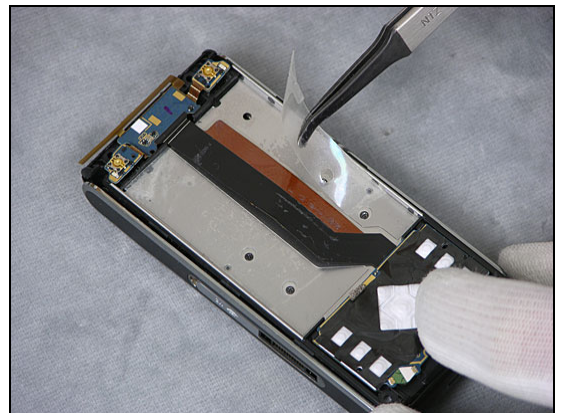
Removal

Follow the 2.2 – 2.8 Disassembly instructions!

Use a Dentist Hook to loosen the Foil Adhesive LCD Support, right

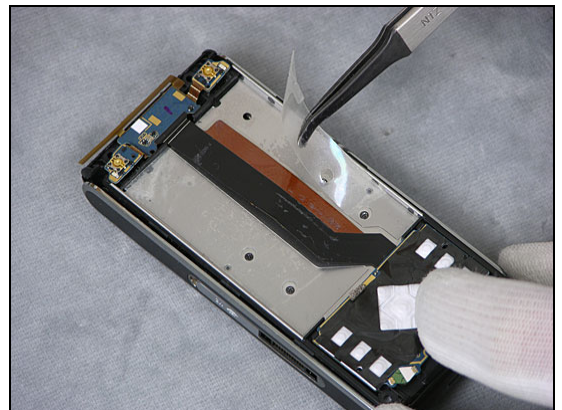


Use a Flex Film Assembly Tool to remove the Foil Adhesive LCD Support, right



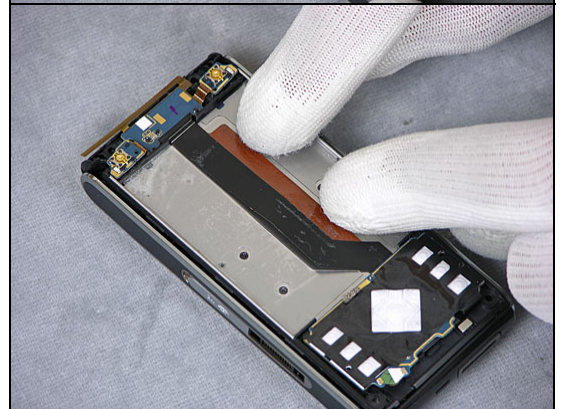
Installation

Use a Flex Film Assembly Tool to position the Foil Adhesive LCD Support, right



Use a your fingers to attach the Foil Adhesive LCD Support, right

Follow the 4.8 – 4.14 Reassembly instructions!



3.59 Light GU Numeric

Removal

Follow the 2.2, 2.4 – 2.5 Disassembly instructions!

Use a pair of ESD Tweezers to loosen the Light GU Numeric



Use a pair of ESD Tweezers to remove the Light GU Numeric



Installation

Use a pair of ESD Tweezers to position the Light GU Numeric



MAKE SURE THE ALIGNMENT IS CORRECT!



Use your fingers to attach the Light GU Numeric

Follow the 4.11 – 4.12, 4.14 Reassembly instructions!

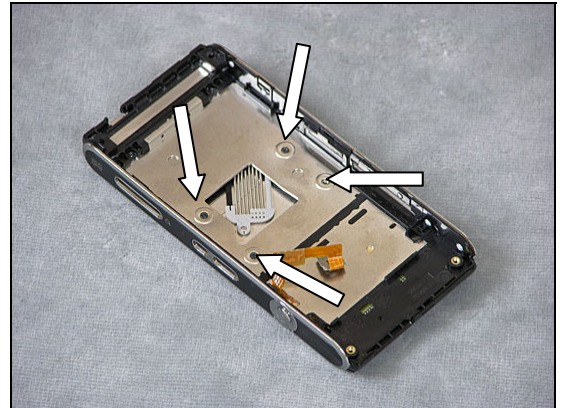


3.60 Hinge Slide Mechanism

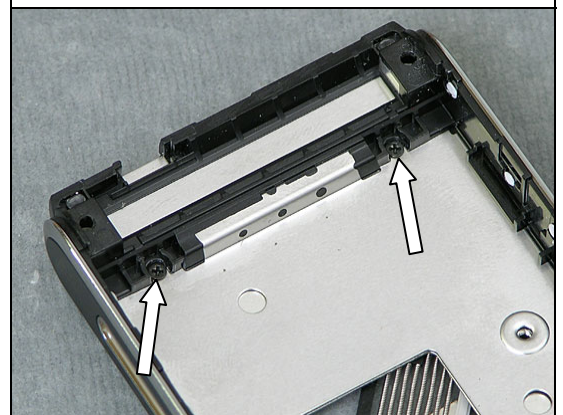
Removal

Follow the 2.2 – 2.12 Disassembly instructions!

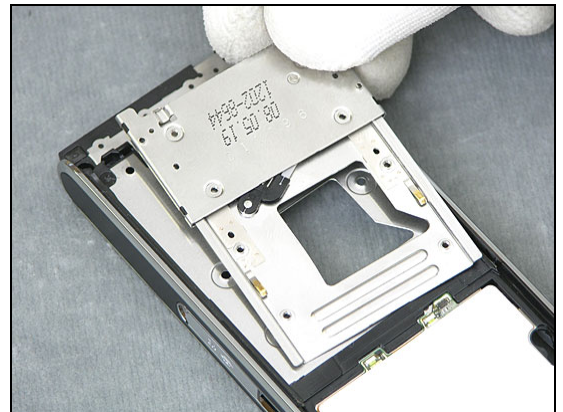
Use a Screwdriver with JCIS Bit to remove the four Flat Head M1.4x1.7.



Use a Screwdriver with JCIS Bit to remove the two Flat Head M1.4x1.7.

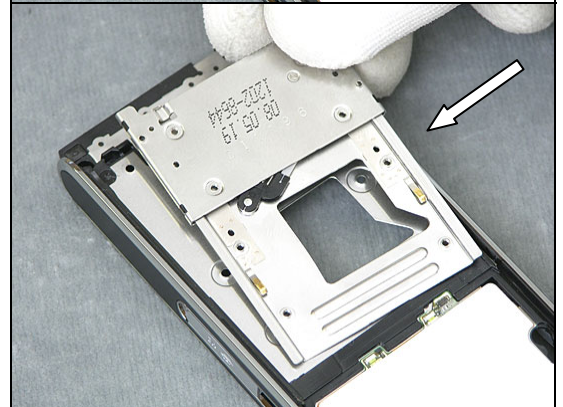


Turn over the phone and use your fingers to remove the Hinge Mechanism.

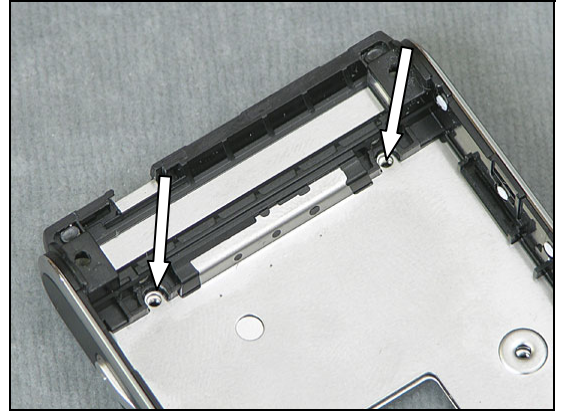


Installation

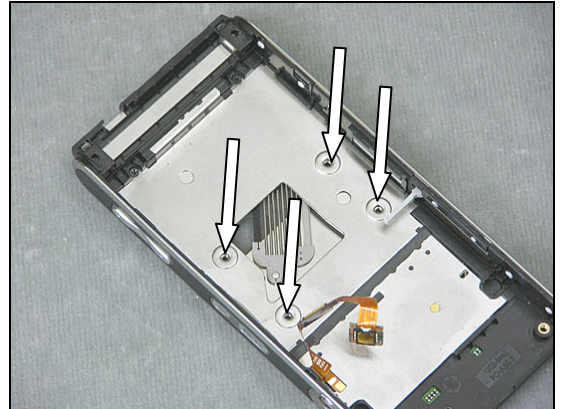
Use your fingers to position the Hinge Mechanism



Turn over the phone and use a Screwdriver with JCIS Bit (torque 11Ncm) to insert and tighten the two Flat Head M1.4x1.7.



Use a Screwdriver with JCIS Bit (torque 11Ncm) to insert and tighten the four Flat Head M1.4x1.7.



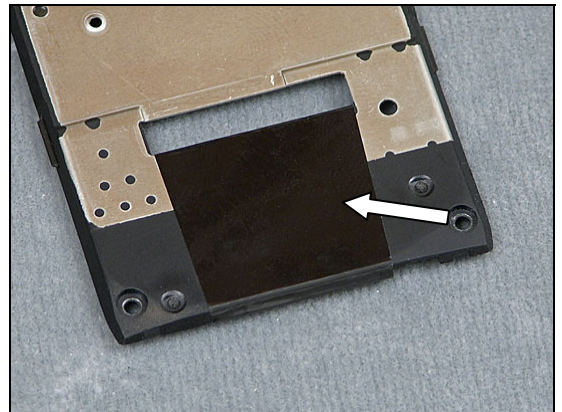
Follow the 4.4 – 4.14 Reassembly instructions!

3.61 Protection Tape

Removal

Follow the 2.2 – 2.10 Disassembly instructions!

Use a pair of Tweezers to remove the Protection Tape

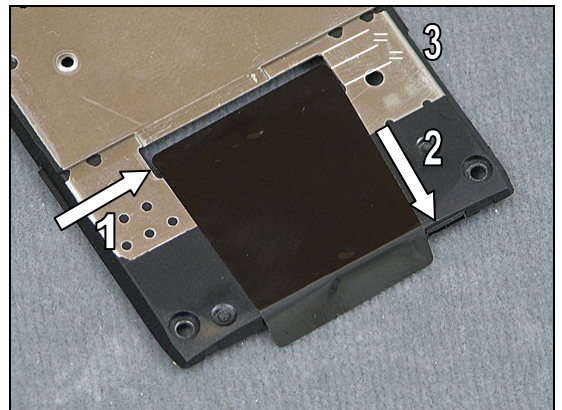


Installation

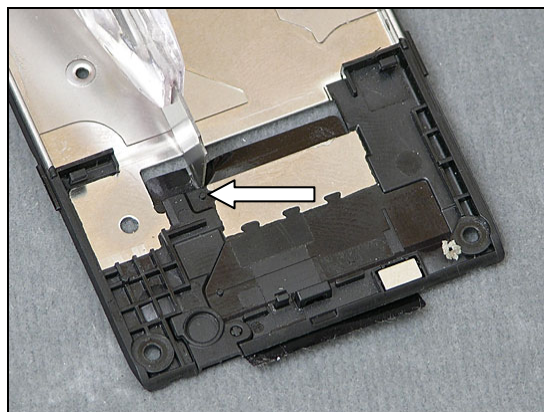
Use a blunt pair of Tweezers to position the Protection Tape. Align with the edge of the hole (1).

MAKE SURE NOT TO COVER THE CUTOUT FOR THE MICROPHONE (2).

Let the Protection Tape stick out halfway over the hole (3).

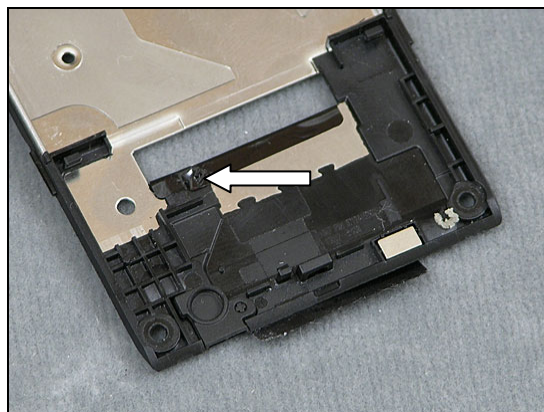


Flip the Cover Rear Assembly over and make a cut in the Protection Tape for the pin.



Fold the Protection Tape over the edge of the hole.

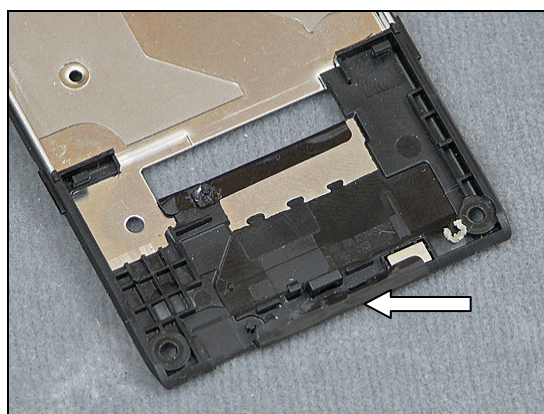
MAKE SURE NOT TO COVER THE PIN!



Fold the other end of the Protection Tape.

MAKE SURE NOT TO COVER THE CUTOUT FOR THE MICROPHONE!

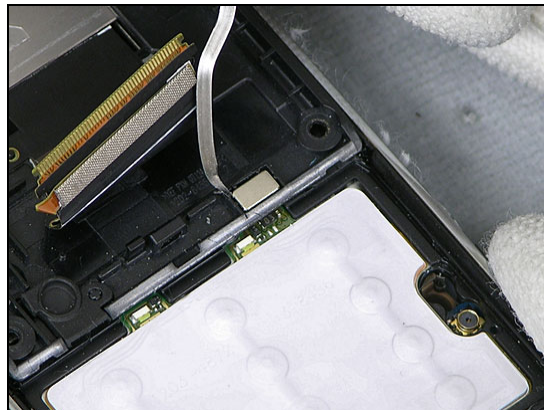
Follow the 4.6 – 4.14 Reassembly instructions!



3.62 Magnet metal

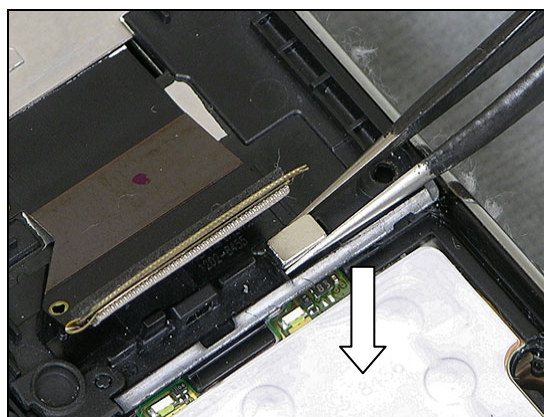
Removal

Follow the 2.2 – 2.12 Disassembly instructions!
Use a dentist hook to remove the Magnet metal.



Installation

Use a pair of ESD tweezers to position the Magnet metal.
Follow the 4.4 – 4.14 Reassembly instructions!



3.63 Label

Follow the 2.2 Disassembly instructions!

- Read the old label and/or write the information into the “Label make” program before removal
- Note the position of the label before removal
- Heat up the label by using hot air, if needed
- Carefully remove the label without causing scratches
- If there still are residues, clean the surface with isopropyl alcohol

•NOTE: IF YOU ARE PRINTING A BRAZIL OR VIVO LABEL, REFER TO SECTION 5 FOR MORE INFORMATION ON THE COUNTRY OF ORIGIN.

Check that the proper label format is loaded in the Zebra printer

- Write a new label by using the program “Label make” and check that the printing is OK
- Take the new label and place it onto the frame as in the adjacent picture

NOTE: DO NOT GET ANY LABEL ADHESIVE ON THE BATTERY CONTACTS.

ONE LABEL ONLY IS ALLOWED!

Follow the 4.14 Reassembly instructions



3.64 Board Swap – Replace swap board

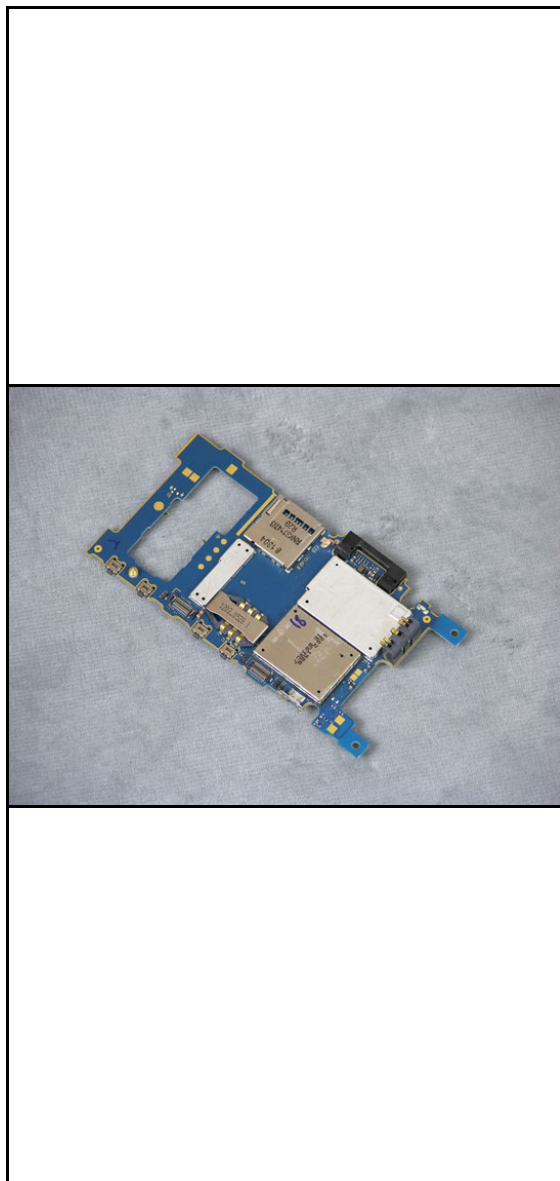
Perform sections 2.1.-2.14 of the disassembly procedure

Replace

Replace with a swap board

Installation

Reinstall as instructed in reassembly procedure 4.1 to 4.4

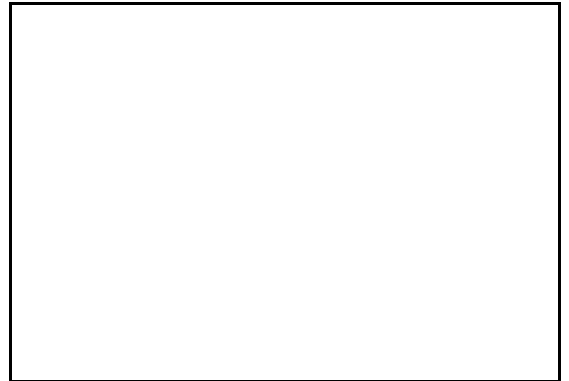




3.65 Board Swap – Change Label

Change Label

Follow the instructions in the Generic Repair Manual –
Build swap for change of label.



3.66 Board Swap – Customize Software

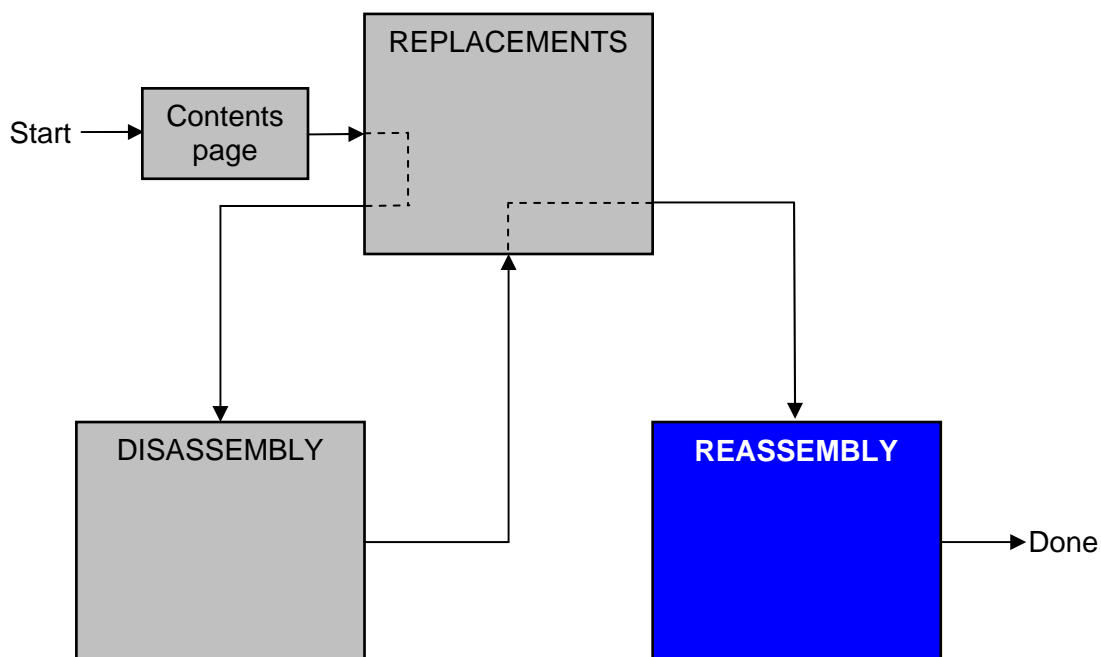
Customization of software

Follow the instructions in the Generic Repair Manual –
Build swap for customization of the software



4 Reassembly

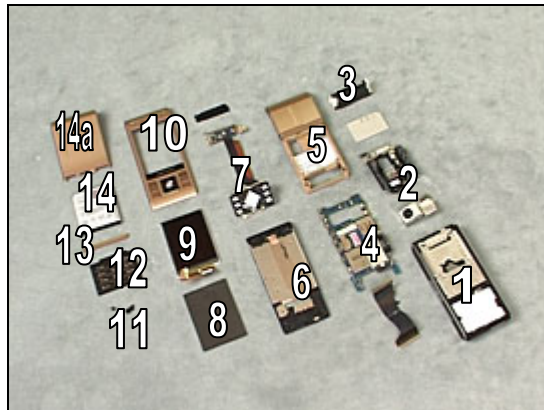
After replacing a part being listed in Replacements, the instruction of that section usually ends by directing you to this Reassembly section with a specification of the instructions you have to carry out in order to reassemble the phone.



4.1 Overview

The reassembly is done in the following sequence:

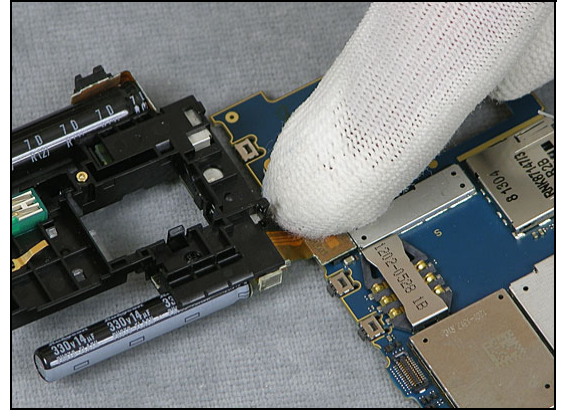
1. Carrier Base Assembly
2. Flash Complete and Camera 8MP
3. Loudspeaker Assembly
4. Main PBA
5. Cover Base Rear Assembly
6. Cover Rear Assembly
7. PBA Key Flex Flip Complete
8. LCD Support Sheet
9. Display 2.41 TFT
10. Cover Flip Front
11. Cap Plastic RF Numeric Keyboard & Cap Numeric Keyboard
12. Keyboard
13. Flip Inner
14. Battery
- 14a. Battery Cover



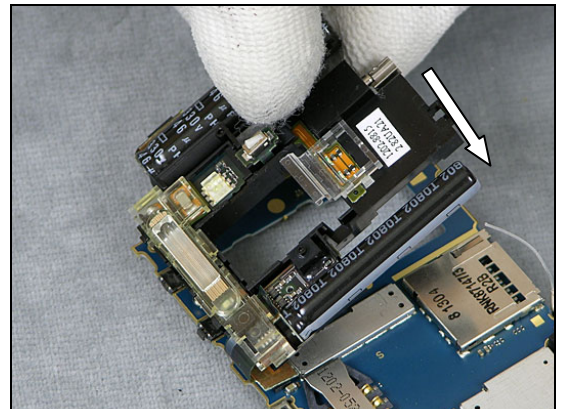
4.2 Flash Complete and Camera 8 MP

Use your fingers to attach the connector

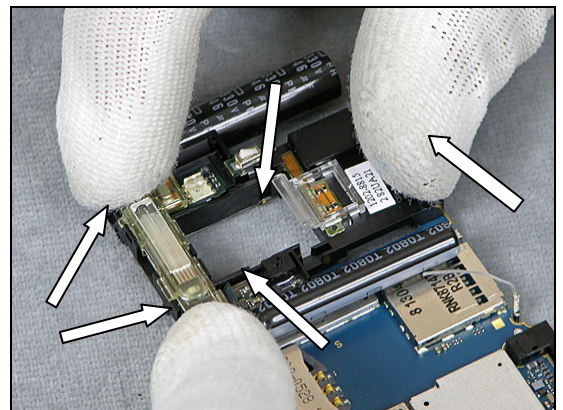
ENSURE THAT THERE IS A GOOD CONNECTION!



Use your fingers to turn over the Flash Complete.

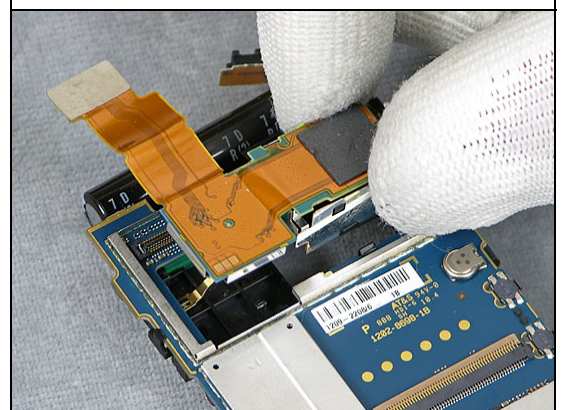


Locate the five snap hooks and use your fingers to snap on the Flash Complete.

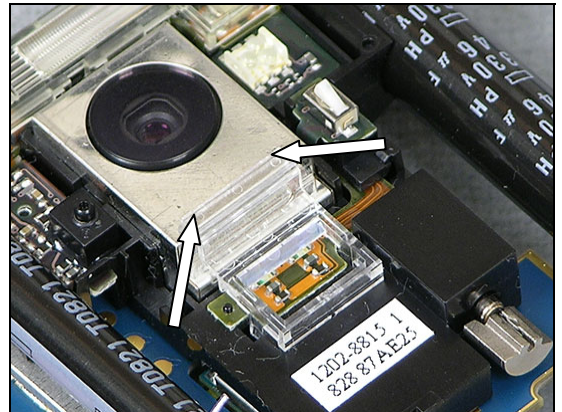


Use your fingers to position the Camera 8MP

DO NOT INSERT THE CAMERA TO DEEP!



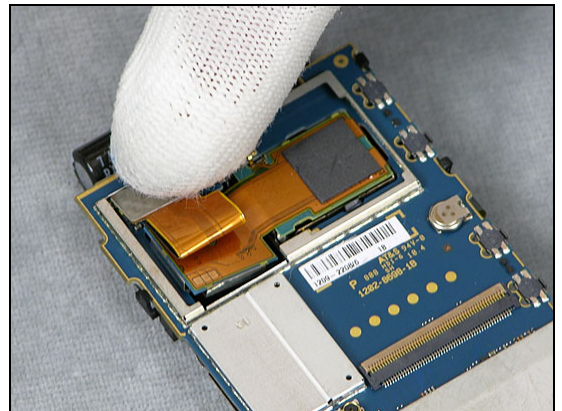
MAKE SURE THE ALIGNMENT IS CORRECT!



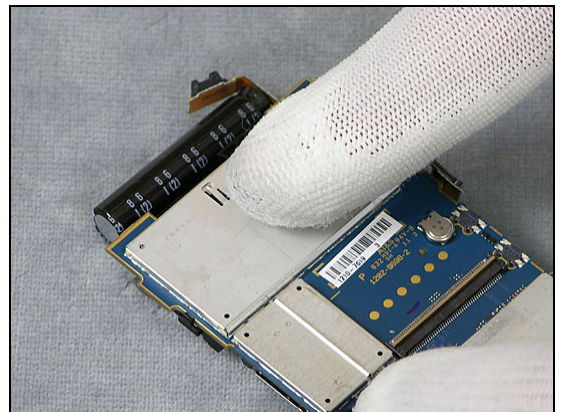
Use your fingers to attach the connector
ENSURE THAT THERE IS A GOOD CONNECTION!

DO NOT BEND THE FLEX BEFORE THE CONNECTOR IS ATTACHED!

BEND THE FLEX AS THE PICTURE SHOWS!

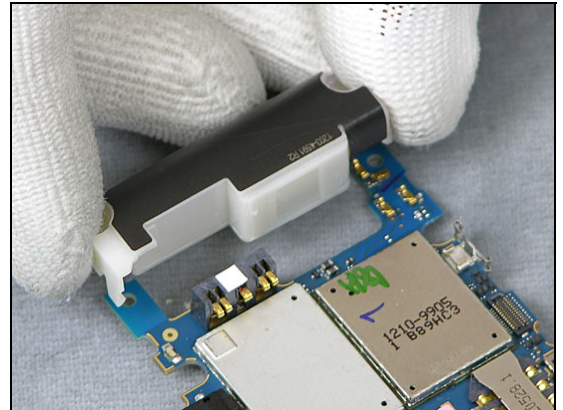


Use your fingers to attach the Shield Can Lid, Camera

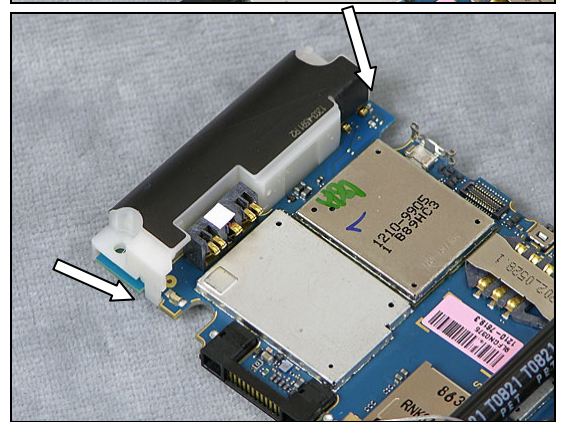


4.3 Loudspeaker Assembly

Use your fingers to position the Loudspeaker Assembly.



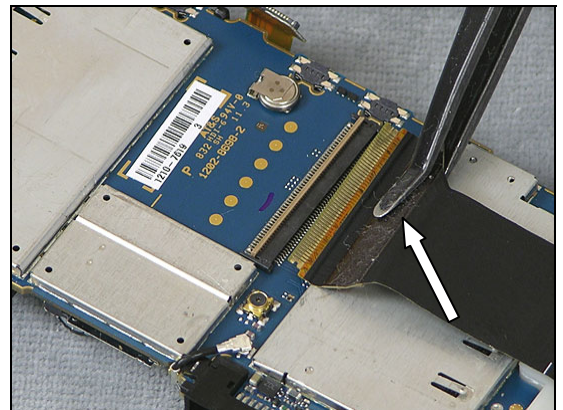
Use your fingers to snap on the Loudspeaker Assembly.



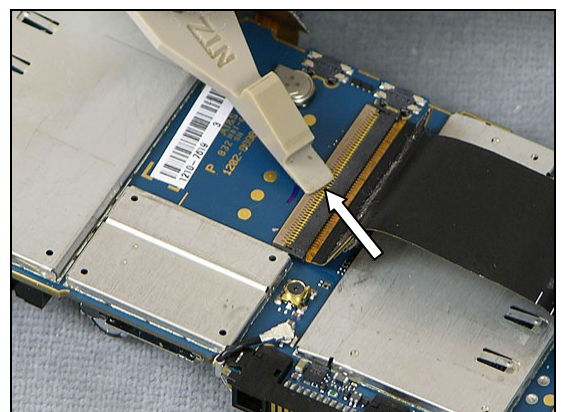
4.4 Main PBA

Use a Flex Film Assembly Tool to attach the Slider FPC Assy to the main PBA connector

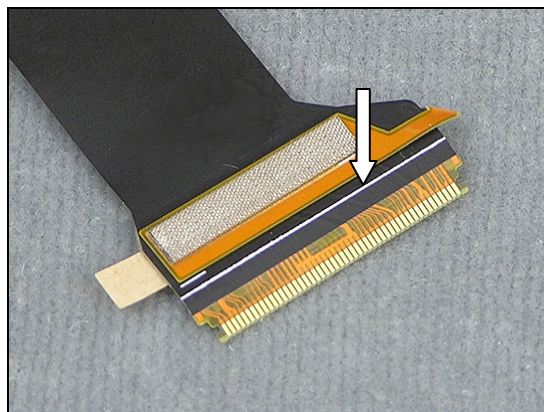
ENSURE THAT THERE IS A GOOD CONNECTION!



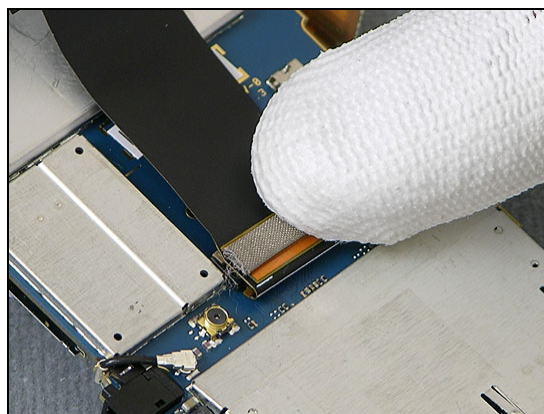
Use a Front Opening Tool to close the connectors lock



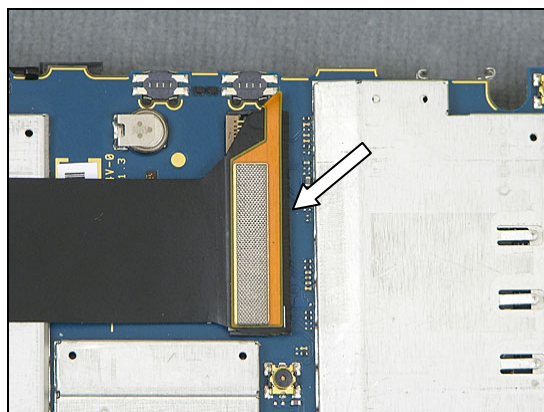
Fold the Slider FPC Assy along the white line.
(Slider FPC Assy not mounted for visibility)



Attach the Slider FPC Assy to the Main PBA..

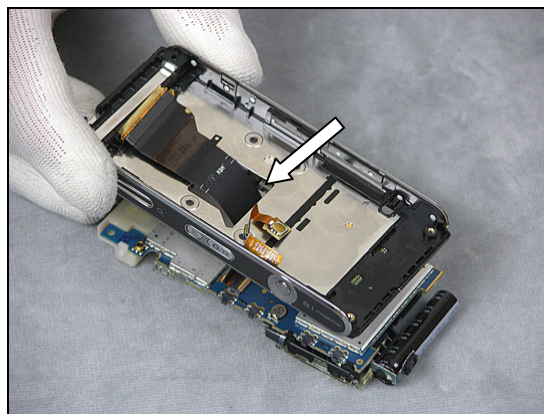


The white line shall not be visible when looking from above



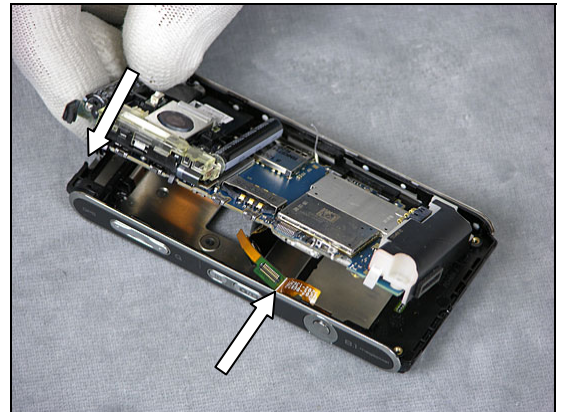
Use your fingers to thread the Slider FPC Assy through the gap

BE VERY CAREFUL NOT TO DAMAGE THE SLIDER FPC ASSY!



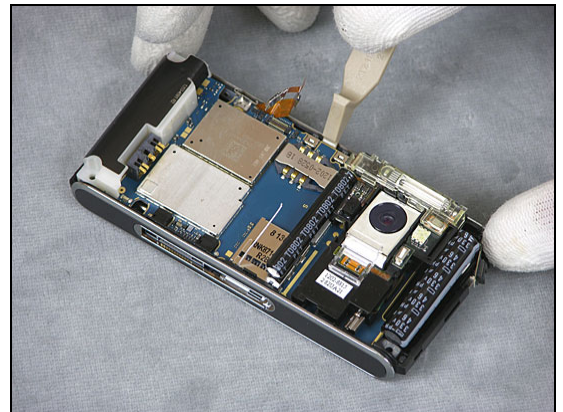
Use your fingers to position the Main PBA

MAKE SURE THE NUMERIC KEY FOIL IS POSITIONED CORRECTLY WHEN POSITIONING THE MAIN PBA!



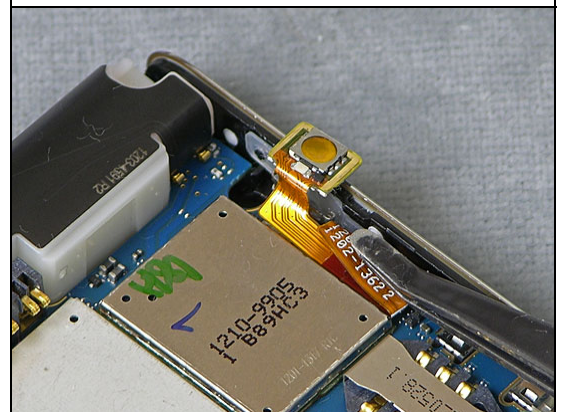
Use a Front Opening Tool and your fingers to position the Main PBA.

BE VERY CAREFUL NOT TO DAMAGE THE MAIN PBA SWITCHES BY USING A FRONT OPENING TOOL AND BENDING OUT THE CARRIER BASE ASSY!



Use a Flex Film Assembly Tool to attach the connector to the Main PBA

ENSURE THAT THERE IS A GOOD CONNECTION!

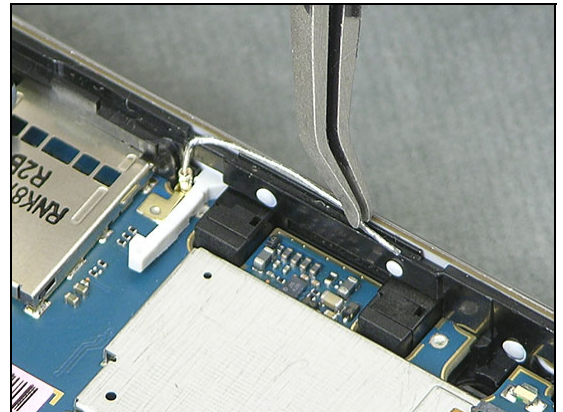


Use a Flex Film Assembly Tool to position the Key Camera Flex in the camera key switch supporter



Use a Flex Film Assembly Tool to position and attach the BT/WLAN Antenna

MAKE SURE THE BT/WLAN ANTENNA IS COMPLETELY HELD BY THE CLIP!

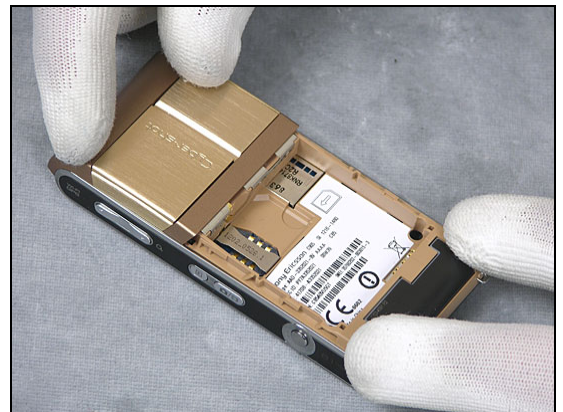


4.5 Cover Base Rear Assembly

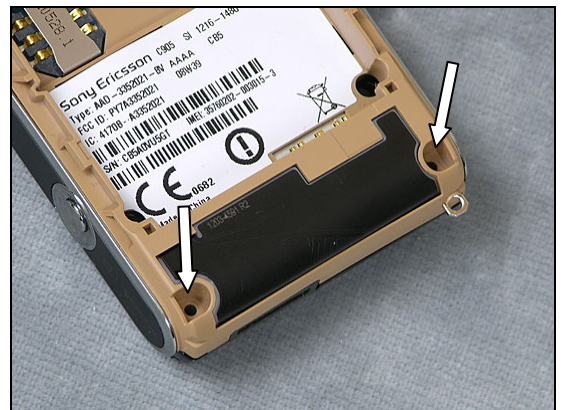
Use your fingers to position the Cover Base Rear Assembly.



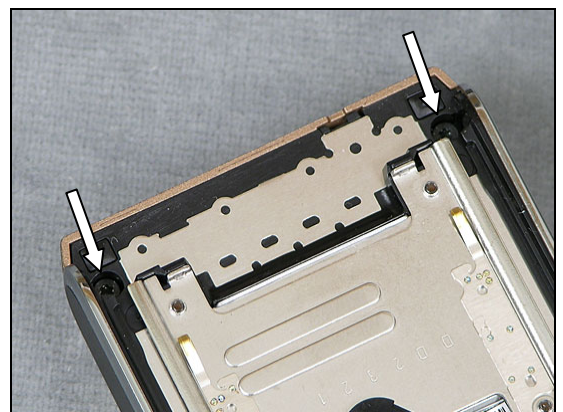
Use your fingers to snap on the Cover Base Rear Assembly.



Use a Screwdriver with T6 Bit to assemble the two Screws Torx 5.3x1.6 (torque 11Ncm).



Use a Screwdriver with T5 Bit to assemble the two Screws Torx 5.0x1.6 (torque 11Ncm).



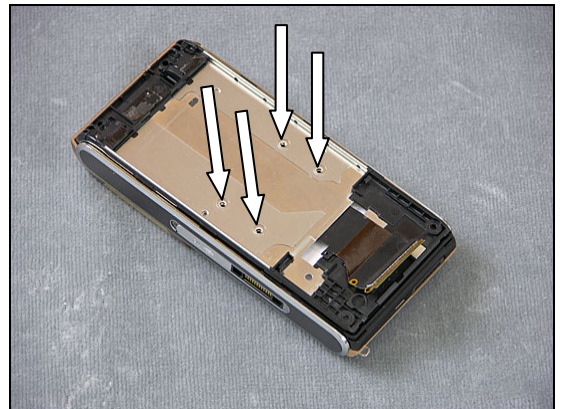
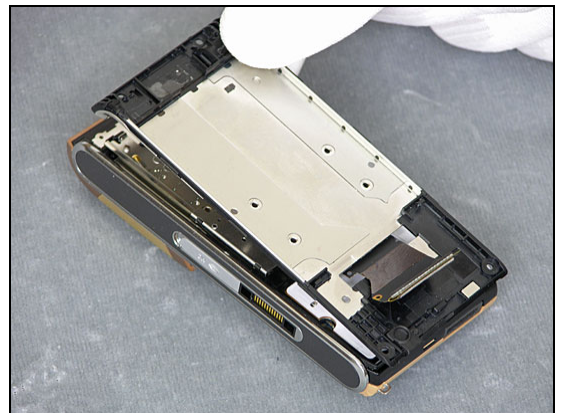
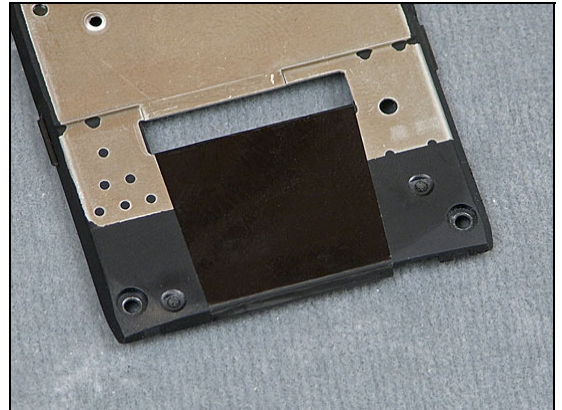
4.6 Cover Rear Assembly

IF A PROTECTION TAPE IS MISSING A PROTECTION TAPE SHALL BE MOUNTED.

Follow the 3.61 Replacement instructions!

Use your fingers to position the Cover Rear Assembly

Use a Screwdriver with JCIS Bit (torque 11Ncm) to insert and tighten the four Flat Head M1.4x1.7



4.7 PBA Key Flex Flip Complete

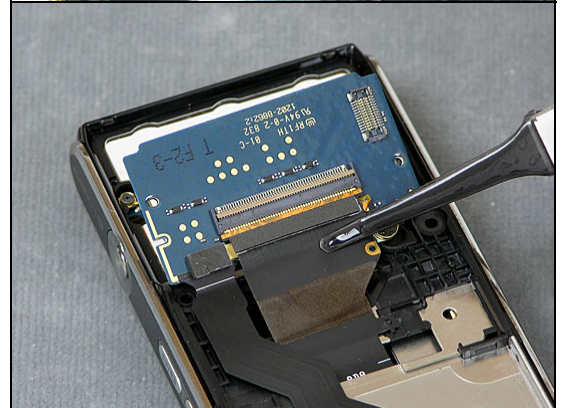
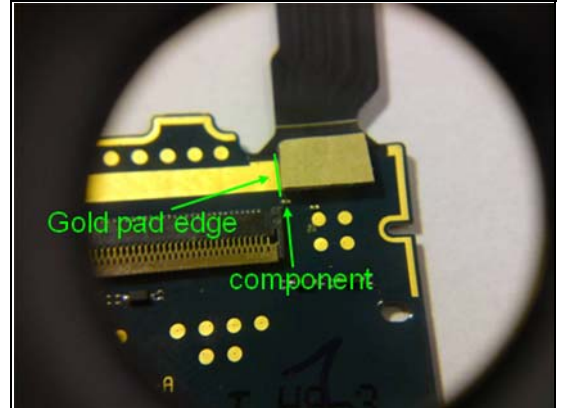
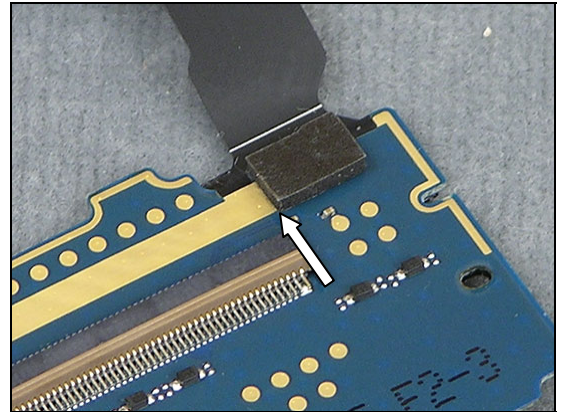
ENSURE THAT THERE IS A SPACER FOR RIGID FLEX FIXATION MOUNTED!

Align the Spacer for Rigid Flex Fixation with the “golden” line at the corner.

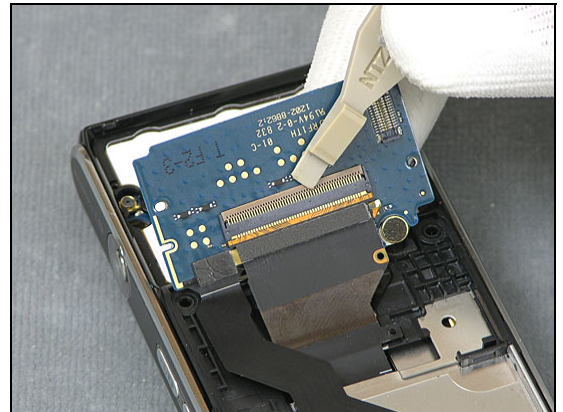
See picture for more details.

Remove the protection sheet before folding down the navigation board in the flip rear cover.

Use a Flex Film Assembly Tool to connect the PBA Key Flex Flip Complete to the Slider FPC Assy



Use a Front Opening Tool to snap on the PBA Key Flex Flip Complete to Slider FPC Assy



Press the flex and rigid board together with fingers on each side of Cushion.

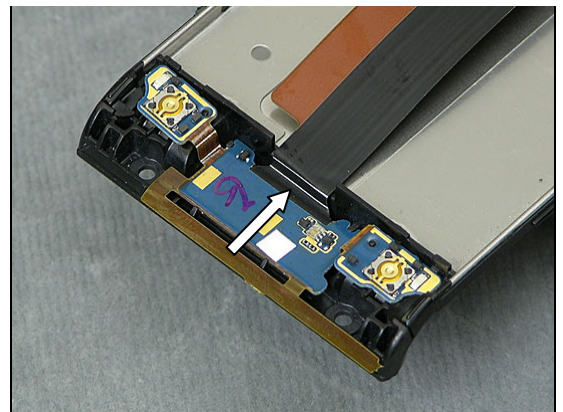
Press hard for 15 seconds and snap the PCB in its place

NOTE!

It's very important that the flex has good adhesion to the cushion and PCB.

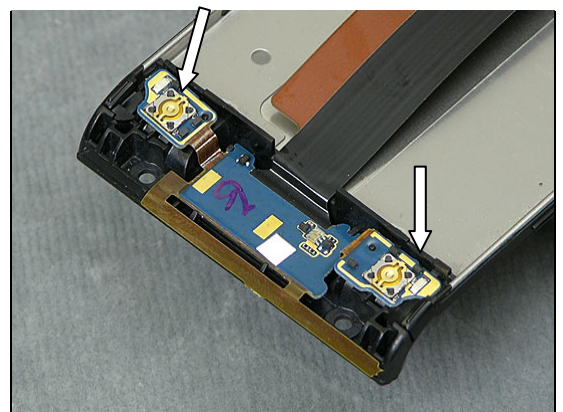


MAKE SURE TO ALIGN THE PBA KEY FLEX FLIP COMPLETE PROPERLY TO THE COVER REAR ASSY!

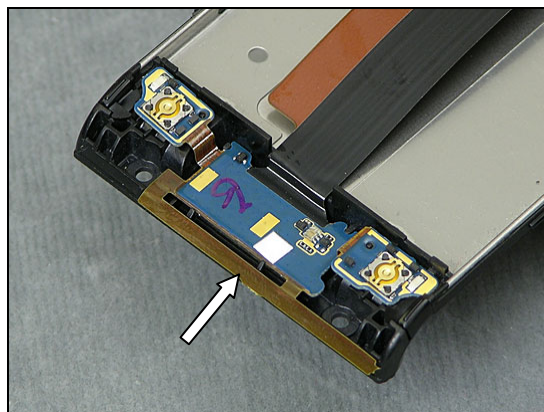


Use your fingers to attach Key A and Key B

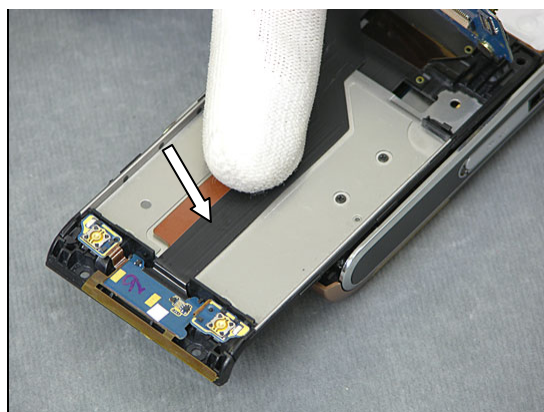
USE THE GUIDE PINS ON THE COVER REAR ASSY TO ALIGN KEY A AND KEY B!



Use your fingers to attach the GPS Antenna



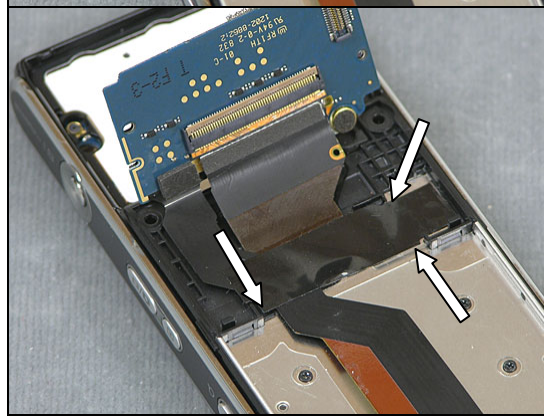
Use your fingers to attach the PBA Key Flex Flip Complete.



Use a Flex Film Assembly Tool to position the Foil Adhesive Single Side 0.15 mm Flip Tape



MAKE SURE THE ALIGNMENT IS CORRECT!

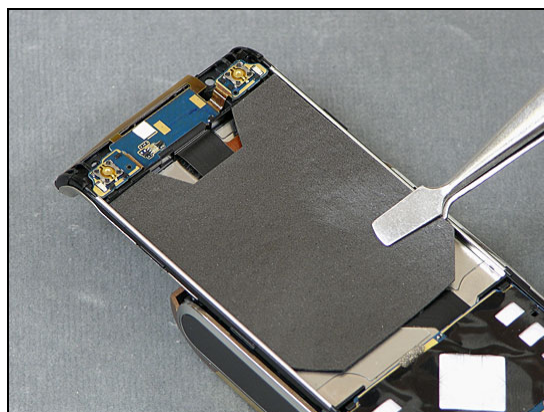


Use your fingers to attach the Foil Adhesive Single Side
0.15 mm Flip Tape



4.8 LCD Support Sheet

Use a blunt pair of Tweezers and your fingers to attach the
LCD Support Sheet.



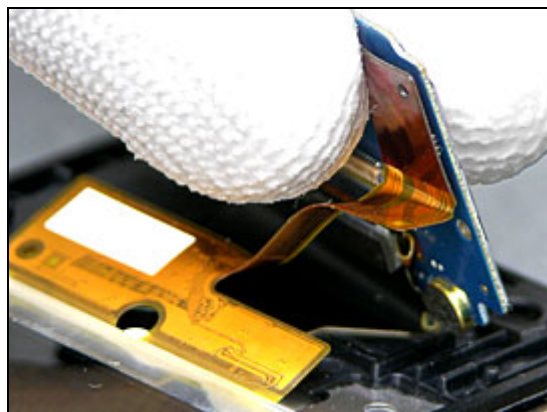
4.9 Display 2.41 TFT

Use your fingers to position the Display 2.41 TFT.



Attach the connector to the PBA Key Flex Flip Complete

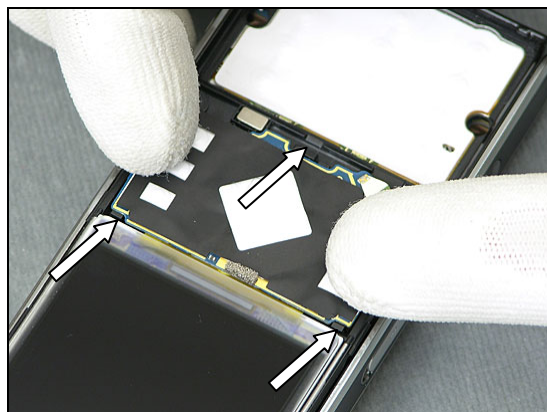
ENSURE THAT THERE IS A GOOD CONNECTION!



MAKE SURE THE PBA KEY FLEX FLIP COMPLETE IS PROPERLY ALIGNED AS THE PICTURE SHOWS!



Locate the three snap hooks and use your fingers to flip over and place the PBA Key Flex Flip Complete.



4.10 Cover Flip Front

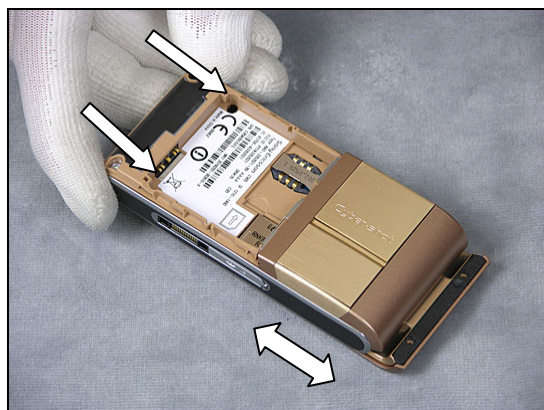
Use your fingers to position the Cover Flip Front in the rear end.



Use your fingers to snap on the Cover Flip Front.



Use your fingers to slide and position the Cover Flip Front to make the two Screw 1.4x2.1 holes visible through the two holes in the Cover Base Rear Assembly.

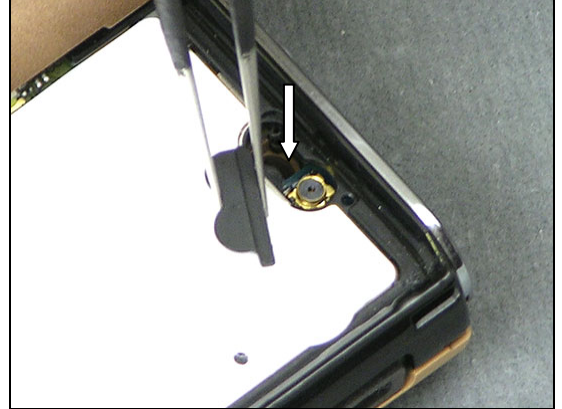


Use a Screwdriver with JCIS Bit (torque 11Ncm) to insert and tighten the two new Screw 1.4x2.1.



4.11 Cap Plastic RF Numeric Keyboard & Cap Numeric Keyboard

Use a pair of ESD tweezers to place the Cap Plastic RF Keyboard Numeric.



Use a pair of ESD tweezers to place the Cap Numeric Keyboard.



4.12 Keyboard

Use a Flex Film Assembly Tool to position the Keyboard.



Place the phone on the Keyboard Pressure Tool as the picture shows. Set the Pressure Tool to 50 N.

Find the User Guide for the Pressure Tool in CSPN/Repair Instructions/Mechanical/Tool Catalogue (Space ID 1003-9107)

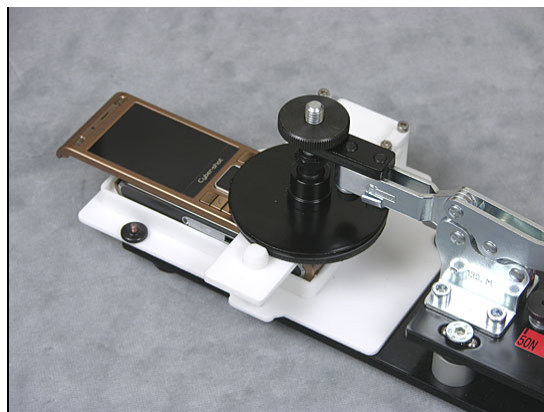
OPEN ZIP FILE/ PDF DOCUMENT SPACE ID 1219-2553



Use the Pressure Tool to attach the Keyboard



Use the Pressure Tool to press the Keyboard for 10 seconds.



4.13 Foil Flip Inner

Use a Screwdriver with JCIS Bit (torque 11Ncm) to insert and tighten the two Screws 4.0x1.4.



Use a pair of ESD Tweezers to position and attach the Foil Flip Inner.



4.14 Battery Cover & Battery

Use your fingers to attach the Battery.



Use your fingers to attach the Battery Cover.



5 Country of Origin Barcodes for Brazil/VIVO Labels

Below is a link to a list of countries of origin. If you are printing a Brazil or VIVO label, scan the barcode corresponding to the correct country of origin for the “Fabricado” field.



6 Revision history

Rev.	Date	Changes / Comments
1	2008-10-24	First release
2	2008-11-04	Chapter 1.1, 2.2, 2.5, 2.10, 4.4, 4.6, 4.8 changed
3	2008-11-20	Spacer for Rigid Flex Fixation added, and revised text
4	2008-12-01	Chapter 3.61, "Protection Tape", new. LCD Support Sheet instructions changed
5	2008-12-17	Magnet metal added
6	2009-02-18	No update, system related update
7	2009-02-18	4.7 PBA Key Flex Flip Complete updated instructions
8	2009-03-26	4.7 PBA Key Flex Flip Complete updated instructions
9	2009-05-08	4.7 PBA Key Flex Flip Complete updated instructions
10	2009-07-07	Updated with chapter 3.64-3.66
11	2009-07-16	Updated chapter 3.40 & 3.41
12	2009-08-03	Modified pictures in Chapter 4.
13	2009-08-28	Changed Screw 2.4x1.4 to 1.4x2.1 in Chapter 2.6 and 4.10
14	2009-09-09	In Chapter 4.10 added to use new screws