



Sony Ericsson

Working Instructions

- mechanical -



Yari
U100a, U100i



CONTENTS

| | | |
|----------|-------------------------------------|-----------|
| 1 | Exterior Views..... | 4 |
| 1.1 | Yari U100..... | 4 |
| 2 | Tools | 5 |
| 3 | Disassembly..... | 6 |
| 3.1 | Battery Cover..... | 6 |
| 3.2 | Battery..... | 7 |
| 3.3 | Keyboard Main | 7 |
| 3.4 | Rear Cover | 8 |
| 3.5 | Inner Frame and Main PBA..... | 10 |
| 3.6 | Inner Frame | 12 |
| 3.7 | Deco Plate..... | 13 |
| 3.8 | Front Cover..... | 13 |
| 3.9 | Display | 15 |
| 4 | Replacement | 17 |
| 4.1 | Battery Cover..... | 17 |
| 4.2 | Rear Cover | 17 |
| 4.3 | Keyboard Main | 17 |
| 4.4 | Front Cover..... | 17 |
| 4.5 | Inner Frame | 18 |
| 4.6 | Deco Plate..... | 18 |
| 4.7 | Display | 18 |
| 4.8 | Hinge..... | 18 |
| 4.9 | Adhesive Display - Hinge | 19 |
| 4.10 | Adhesive Grounding Shield Can..... | 21 |
| 4.11 | Camera 5Mpixel..... | 22 |
| 4.12 | Camera QCIF | 24 |
| 4.13 | Cap Memory Stick | 26 |
| 4.14 | Cap Mic | 28 |
| 4.15 | Cap RF | 29 |
| 4.16 | Clip Main Camera | 31 |
| 4.17 | Co-Brand..... | 32 |
| 4.18 | Core Unit Label..... | 33 |
| 4.19 | Cushion Grounding Hinge..... | 34 |
| 4.20 | Cushion Grounding Inner Frame | 36 |
| 4.21 | Cushion Grounding Navigation | 38 |
| 4.22 | Cushion Main Camera BtB | 40 |
| 4.23 | Cushion Main Camera Cu | 41 |
| 4.24 | Ear Speaker | 42 |



| | |
|-----------------------------------|-----------|
| 4.25 FPC Main Keyboard | 43 |
| 4.26 FPC Slider Navigation..... | 45 |
| 4.27 Gasket Battery Cover..... | 48 |
| 4.28 Gasket VT Camera | 50 |
| 4.29 Key A/B | 51 |
| 4.30 Key Camera | 54 |
| 4.31 Key Left..... | 56 |
| 4.32 Key Right | 58 |
| 4.33 Key Volume | 60 |
| 4.34 Loudspeaker (11x15)..... | 62 |
| 4.35 Loudspeaker (9x18)..... | 63 |
| 4.36 Navigation Support | 64 |
| 4.37 Net Speaker Bottom | 65 |
| 4.38 Net Speaker Top..... | 66 |
| 4.39 Shield Can Lid BB1 | 67 |
| 4.40 Shield Can Lid BB2 | 68 |
| 4.41 Shield Can Lid GPS..... | 69 |
| 4.42 Shield Can Lid ISP | 70 |
| 4.43 Tape Protection HtH..... | 71 |
| 4.44 Water Indicator | 74 |
| 4.45 Window Main Camera | 75 |
| 5 Reassembly..... | 76 |
| 5.1 Display | 76 |
| 5.2 Front Cover..... | 77 |
| 5.3 Deco Plate..... | 78 |
| 5.4 Inner Frame | 79 |
| 5.5 Inner Frame and Main PBA..... | 80 |
| 5.6 Rear Cover | 82 |
| 5.7 Keyboard Main | 84 |
| 5.8 Battery..... | 85 |
| 5.9 Battery Cover..... | 86 |
| 6 Revision History | 87 |

**For general information about mechanical repair related issues, refer to
1220-1333: Generic Repair Manual - mechanical**



1 Exterior Views

1.1 Yari U100



2 Tools

SPECIAL TOOLS

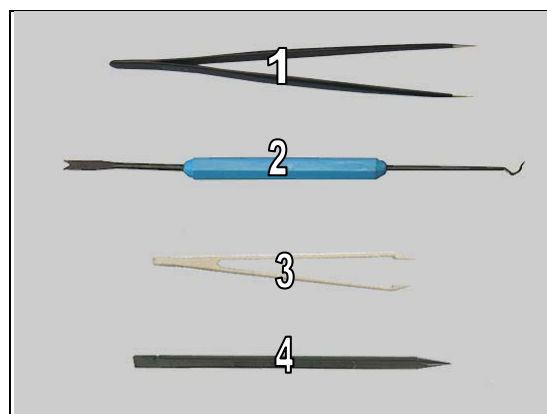
1. Torque Screwdriver
2. Bits (T5)
3. Bits (JCIS No 0)
4. Front Opening Tool
5. Camera Removal Tool
6. Flex Film Assembly Tool
7. Guitar Pick
8. Pressure Tool



For part numbers on the tools above, refer to the 'Tools Catalogue/Matrix'!

STANDARD TOOLS

1. Tweezers (ESD-safe & non-metallic)
2. Dentist Hook
3. Speaker Cover Tool
4. Nylon Pointer

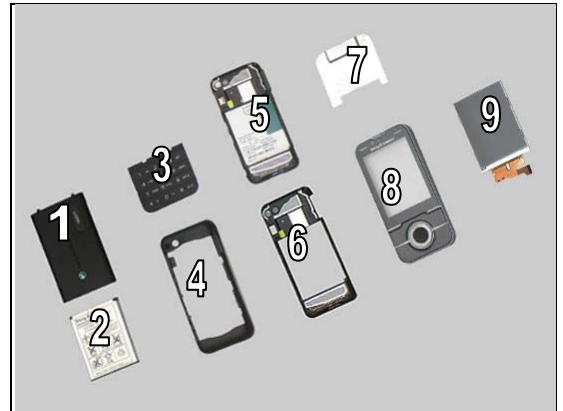




3 Disassembly

The disassembly is done in the following order:

1. Battery Cover
2. Battery
3. Keyboard Main
4. Rear Cover
5. Inner Frame and Main PBA
6. Inner Frame
7. Deco Plate
8. Front Cover
9. Display



3.1 Battery Cover

Close the Hinge.



Release the Battery Cover with fingers.



Lift it off to remove it.

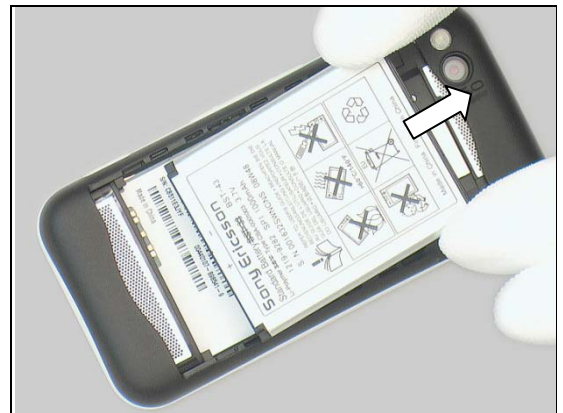
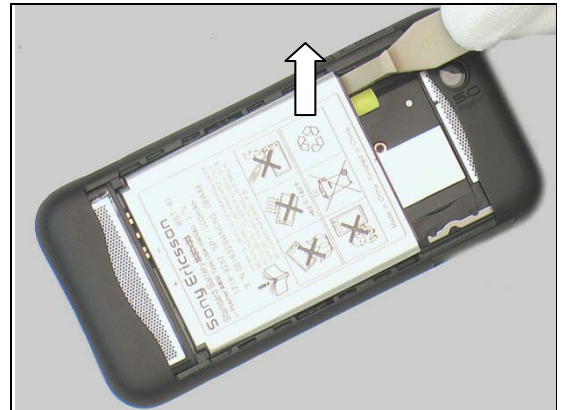


Disassembly

3.2 Battery

Insert the Front Opening Tool into the slot and raise the bottom of the Battery to release it.

Remove the Battery.



3.3 Keyboard Main

Open the Hinge.

Insert the Dentist Hook into the microphone hole to release the Keyboard Main,

Be careful not to damage other parts under the Keyboard Main!



Disassembly

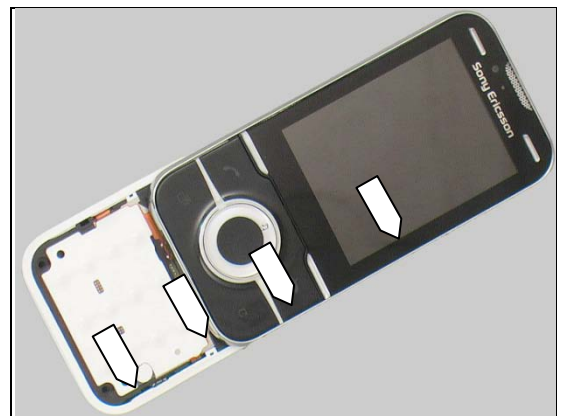
and gently peel off the Keyboard Main by using the Flex Film Assembly Tool.

Scrap! Not to be reused!



3.4 Rear Cover

There are four hooks securing the right side of the Rear Cover on the front.



Use the Front Opening Tool to unlock the hook on the right side as shown in the picture.

Be careful not to damage the side keys on the flex!



Insert the Guitar Pick between the Rear Cover and Inner Frame as shown in the picture and gently slide back and forth to release the other three hooks and the right side of the Rear Cover.

Be careful not to damage the side keys on the flex and the Window for the Flash LED on the Inner Frame!

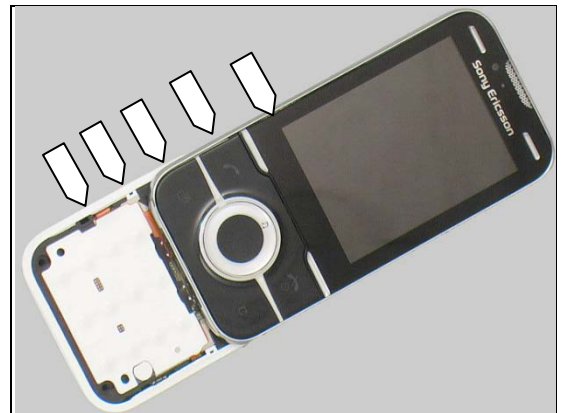


Disassembly

Lift the Rear Cover from the System Connector as show in the picture.



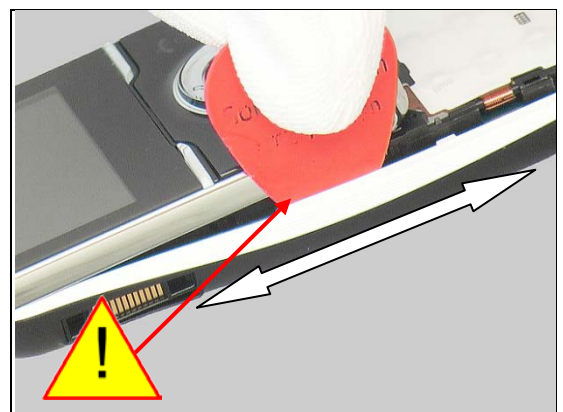
There are five hooks securing the left side of the Rear Cover on the front.



Use the Front Opening Tool to unlock the hook on the left side as shown in the picture.

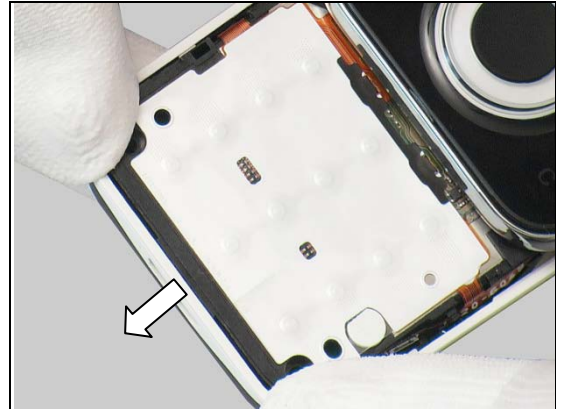


Insert the Guitar Pick as shown in picture and gently slide back and forth to release the other four hooks and the left side of the Rear Cover.



Disassembly

Push the Rear Cover to release it.



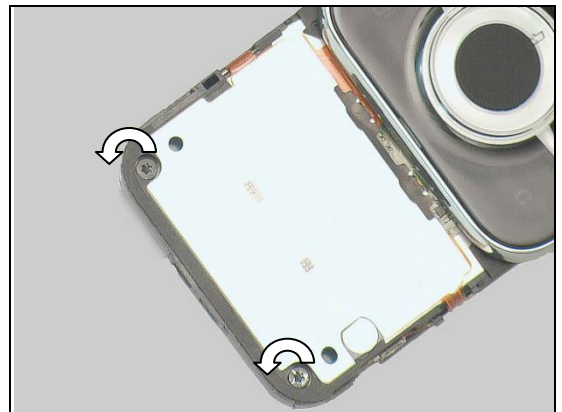
3.5 Inner Frame and Main PBA

There are two hooks securing the Inner Frame and Main PBA to the Hinge.



Remove the Screw Torx 5.0x1.6 by using the Torx Bit No. 5.

Scrap! Not to be reused!



Remove the Screw Other Len: 5.0 Diam: 1.4 M by using the JCIS bit.

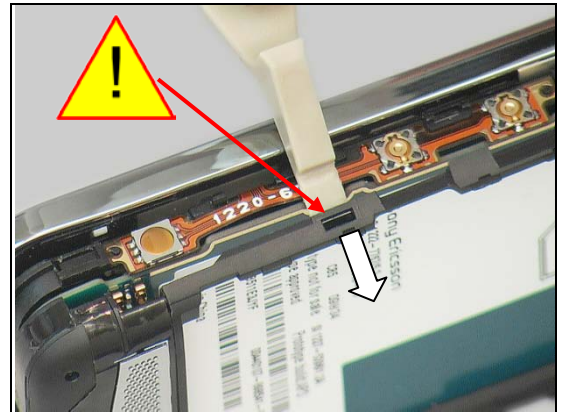
Scrap! Not to be reused!



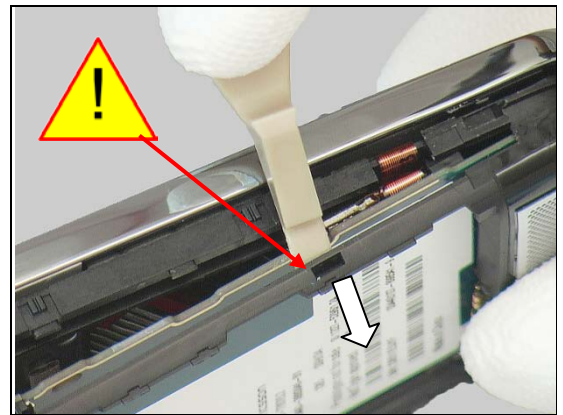


Disassembly

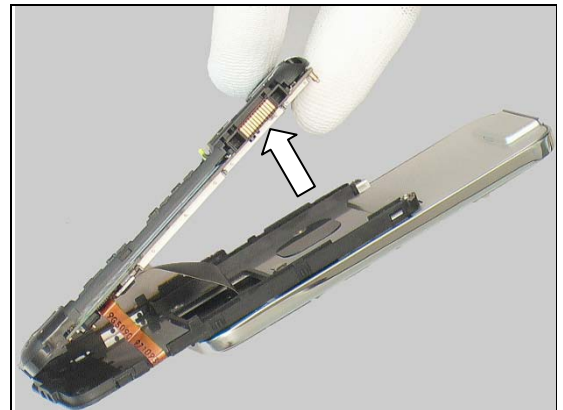
Use the Front Opening Tool to release the hook on the left side.



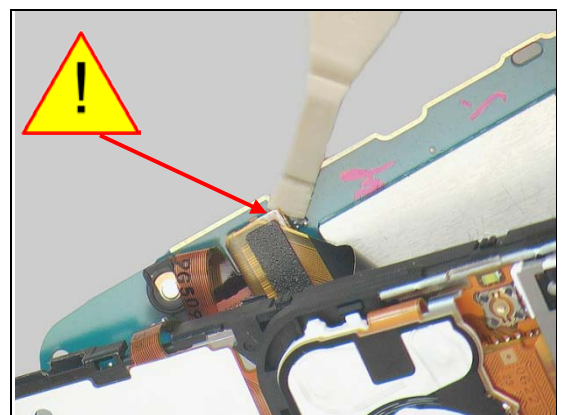
Do the same with the one on the opposite side.



Raise the bottom of the Inner Frame and Main PBA approximately 30° at the bottom,



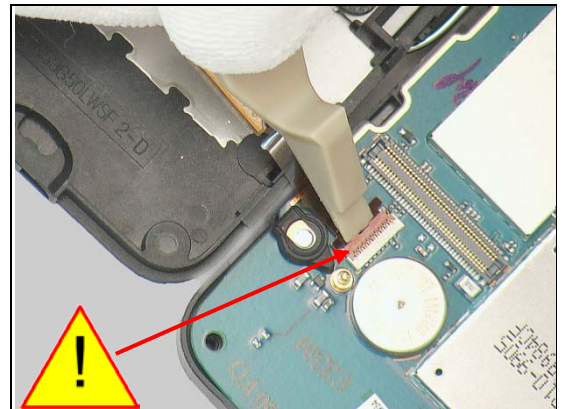
Use the Front Opening Tool to disconnect the Board-to-Board (BtB) connector,





Disassembly

and use the Front Opening Tool to disconnect the ZIF connector.



Remove the Inner Frame and Main PBA from the Hinge.



3.6 Inner Frame

There is an Adhesive Camera – Inner Frame sticking the Inner Frame and Main PBA on the top.

Note! Replace the Adhesive Camera - Inner Frame every time the Inner Frame has been separated from the Main PBA!



Remove the Screw Philips Len: 3.5 Diam: 1.2 by using the JCIS bit.

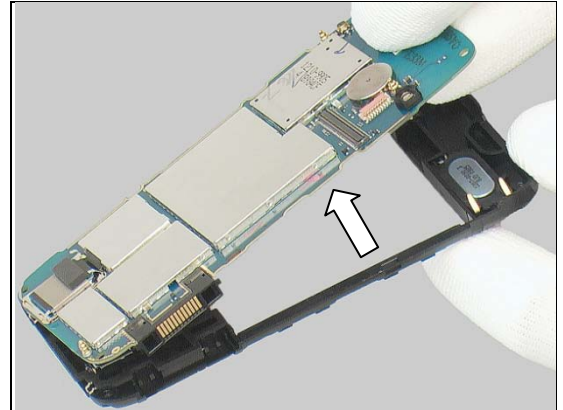
Scrap! Not to be reused!





Disassembly

Gently peel off the Inner Frame from the Main PBA with fingers starting from the bottom.



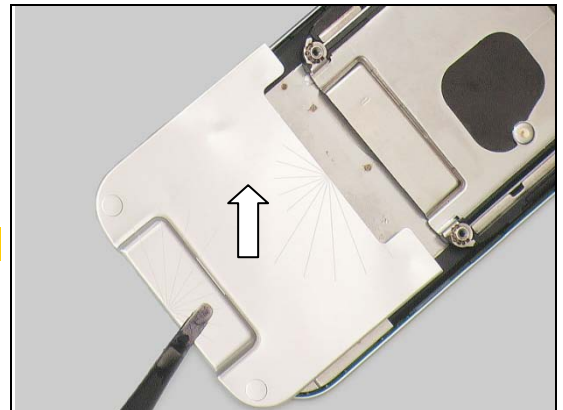
3.7 Deco Plate

Insert the Guitar Pick into the slot to release the Deco Plate from the Hinge.



Remove the Deco Plate by using the Flex Film Assembly Tool.

Scrap! Not to be reused!



3.8 Front Cover

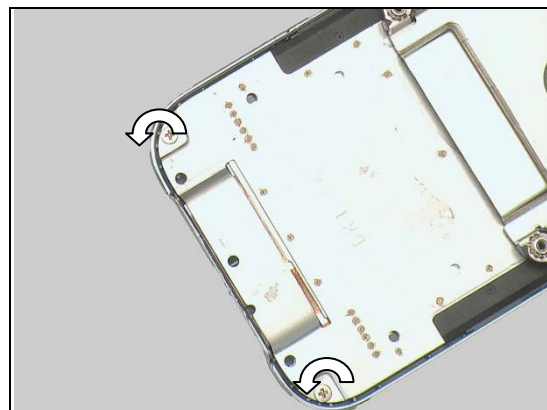
There are totally nine hooks securing the Front Cover.



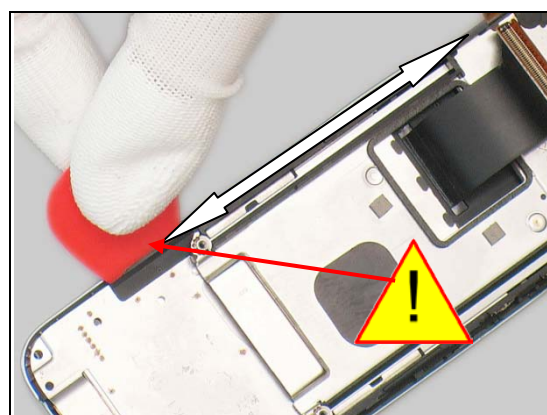
Disassembly

Remove the Screw M1, 4 by using the JCIS bit.

Scrap! Not to be reused!



Insert the Guitar Pick as shown in the picture and gently slide back and forth to release the left side of the Front Cover.



Do the same on the opposite side.



Remove the Front Cover from the Hinge starting by lifting the top of the Front Cover by the Ear Speaker.



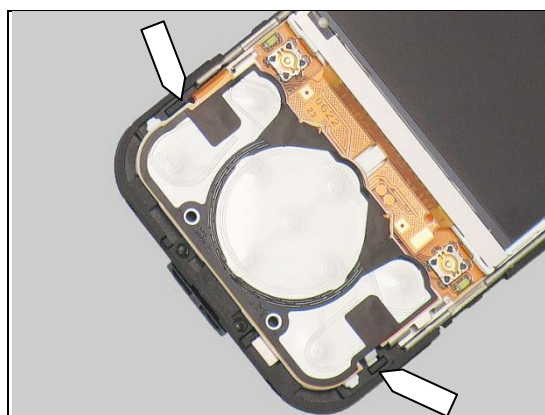
Disassembly

Slide the Front Cover downwards to unlock the three hooks at the bottom.

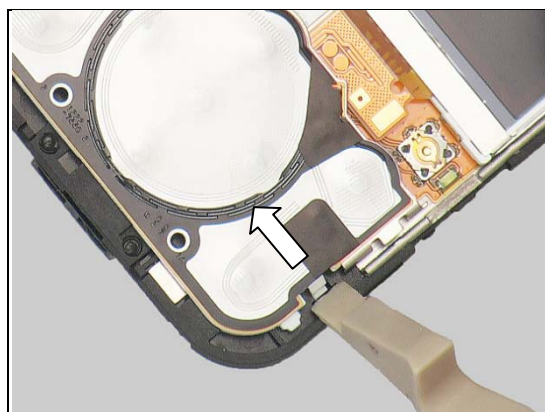


3.9 Display

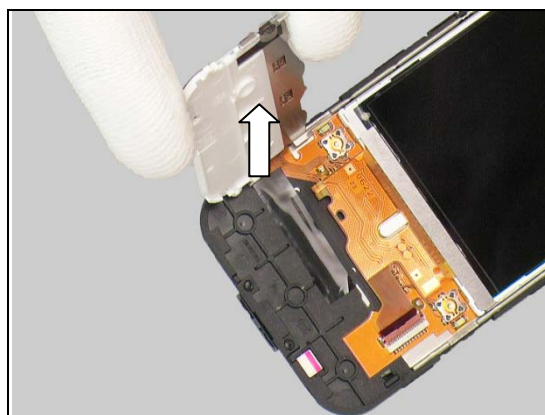
There are two hooks securing the Navigation Support.



Use the Front Opening Tool to release the Navigation Support as shown in the picture.

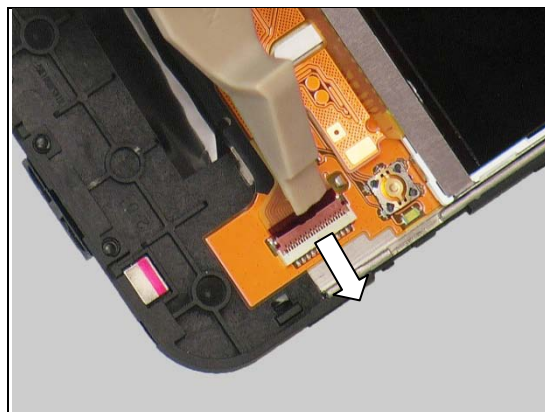


Raise the Navigation Support with fingers,

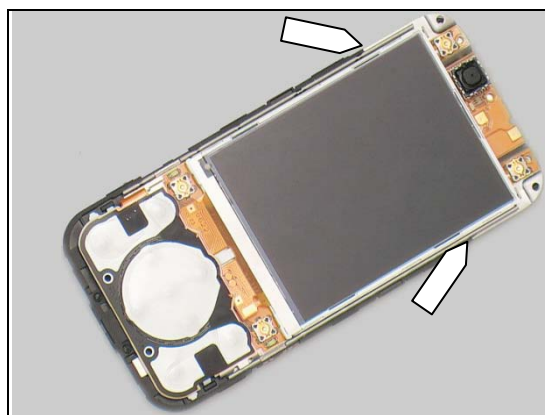


Disassembly

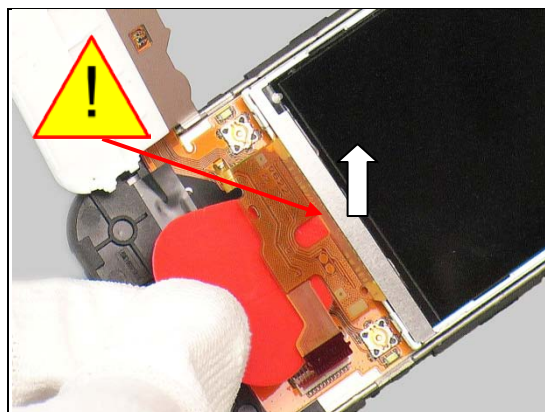
and use the Front Opening Tool to disconnect the connector.



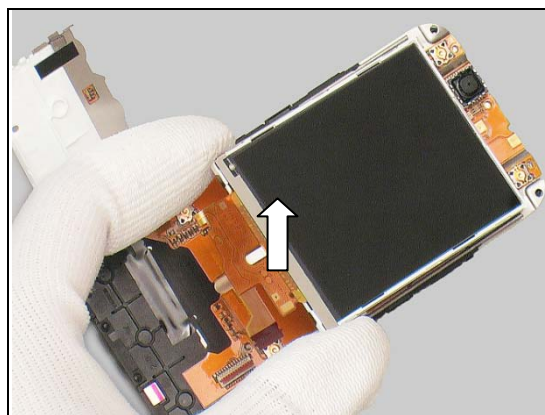
There are two of Adhesive Display – Hinge sticking the Display and Hinge.



Use the Guitar Pick to release the bottom of the Display as shown in the picture,



and remove the Display with fingers.



4 Replacement

4.1 Battery Cover

Follow the 3.1 Disassembly instructions!

Prepare the new Battery Cover.

Follow the 5.9 Reassembly instructions!



4.2 Rear Cover

Follow the 3.1 – 3.4 Disassembly instructions!

Prepare the new Rear Cover.

Follow the 5.6 – 5.9 Reassembly instructions!



4.3 Keyboard Main

Follow the 3.1 – 3.3 Disassembly instructions!

Prepare the new Main Keyboard.

Follow the 5.7 – 5.9 Reassembly instructions!

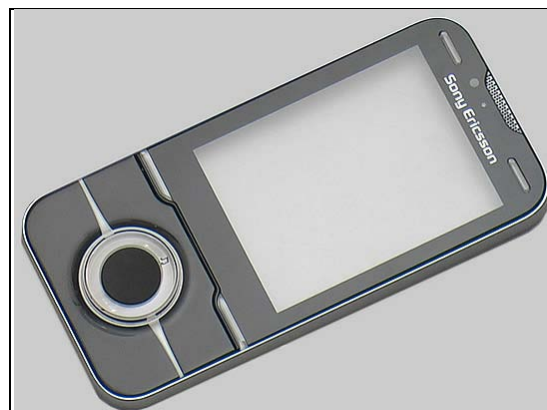


4.4 Front Cover

Follow the 3.1 – 3.2, 3.7 – 3.8 Disassembly instructions!

Prepare the new Front Cover.

Follow the 5.2 – 5.3, 5.8 – 5.9 Reassembly instructions!



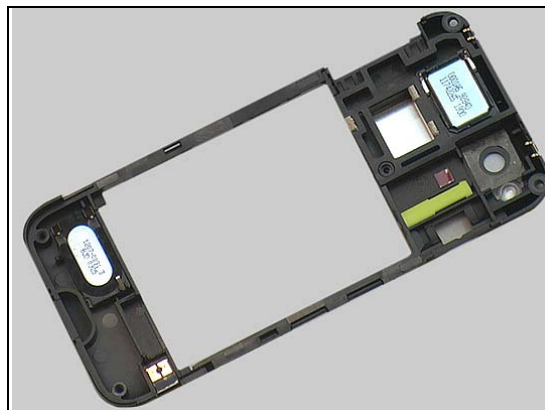
Replacement

4.5 Inner Frame

Follow the 3.1 – 3.6 Disassembly instructions!

Prepare the new Inner Frame.

Follow the 5.4 -5.9 Reassembly instructions!

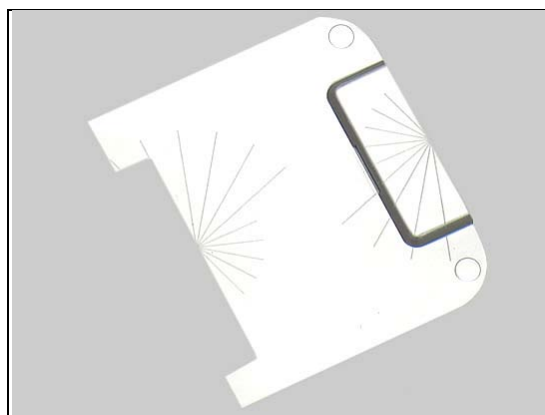


4.6 Deco Plate

Follow the 3.1 – 3.2, 3.7 Disassembly instructions!

Prepare the new Deco Plate.

Follow the 5.3, 5.8 – 5.9 Reassembly instructions!

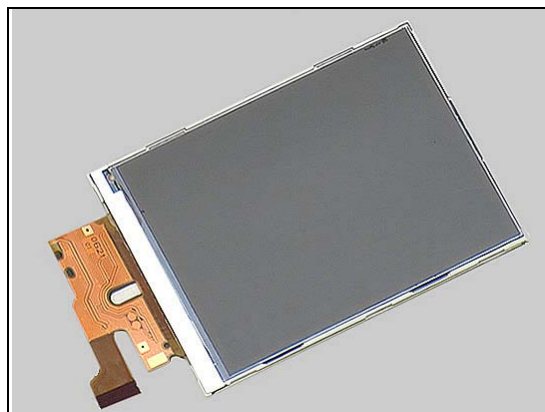


4.7 Display

Follow the 3.1 – 3.2, 3.7 – 3.9 Disassembly instructions!

Prepare the new Display.

Follow the 5.1 – 5.3, 5.8 – 5.9 Reassembly instructions!



4.8 Hinge

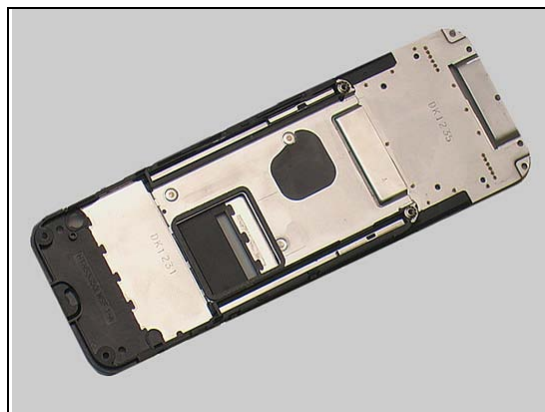
Follow the 3.1 – 3.9 Disassembly instructions!

Follow the 4.25 – 4.26 Removal instructions!

Prepare the new Hinge.

Follow the 4.19, 4.25 – 4.26 Installation instructions!

Follow the 5.1 – 5.9 Reassembly instructions!





Replacement

4.9 Adhesive Display - Hinge

Follow the 3.1 – 3.2, 3.7 – 3.9 Disassembly instructions!
Carry out the replacement as described below.
Follow the 5.1 – 5.3, 5.8 – 5.9 Reassembly instructions!

REMOVAL

Gently use the tweezers to peel off the Adhesive Display – Hinge from the Hinge.

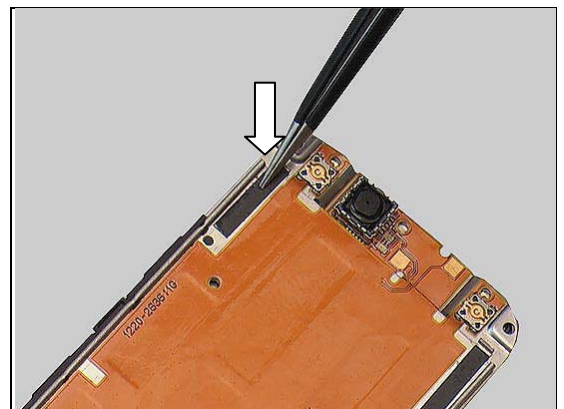
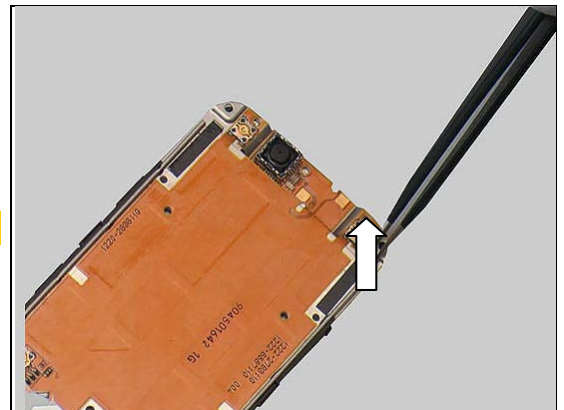
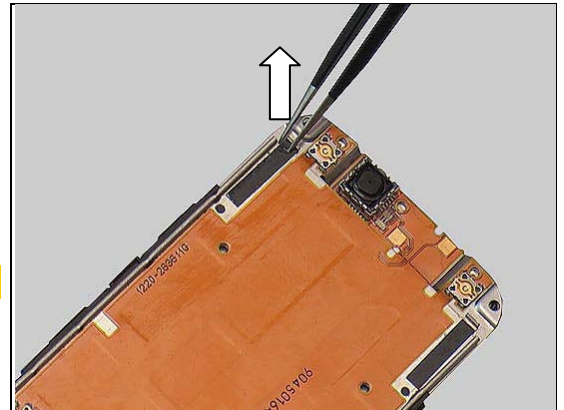
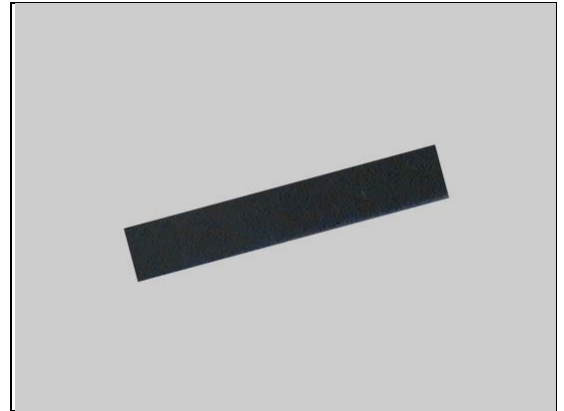
Scrap! Not to be reused!

Do the same with the second one.

Scrap! Not to be reused!

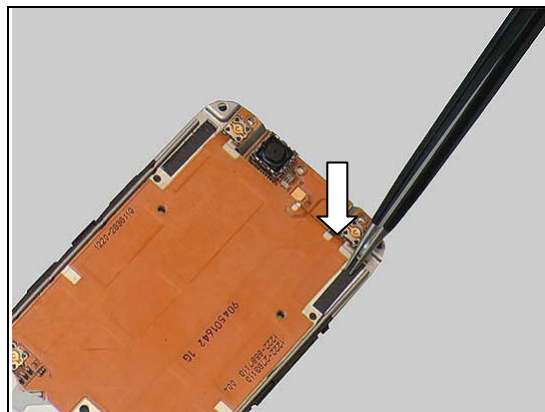
INSTALLATION

Place the new Adhesive Display – Hinge in its allocated metal frame and press to make sure it is securely attached.



Replacement: Adhesive Display - Hinge

Do the same with the second one.





Replacement

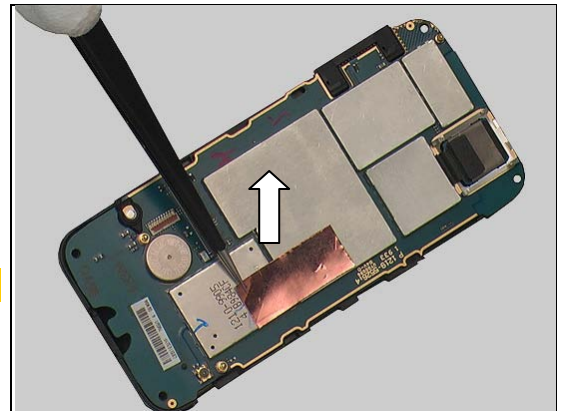
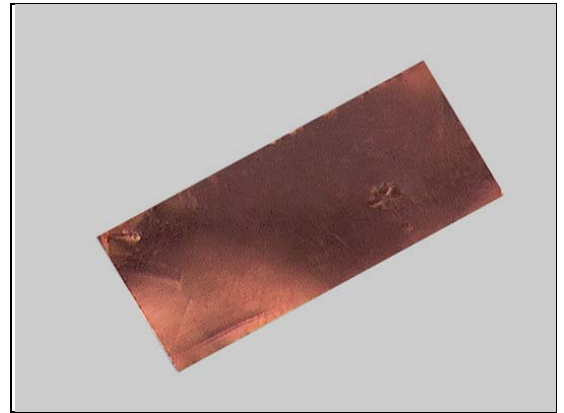
4.10 Adhesive Grounding Shield Can

Follow the 3.1 – 3.5 Disassembly instructions!
Carry out the replacement as described below.
Follow the 5.5 – 5.9 Reassembly instructions!

REMOVAL

Gently use the tweezers to peel off the Adhesive Grounding Shield Can from the Main PBA.

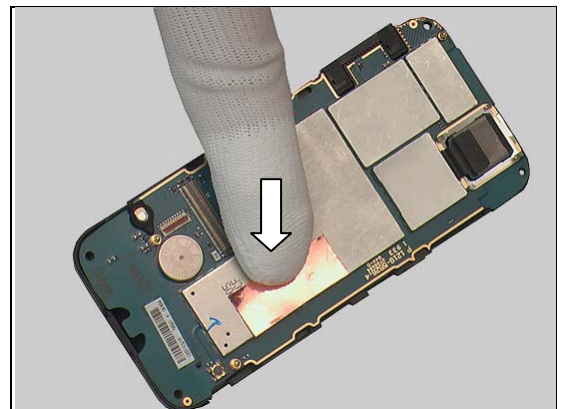
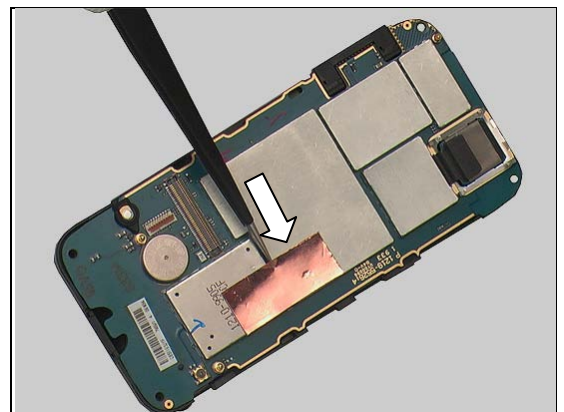
Scrap! Not to be reused!



INSTALLATION

Place the new Adhesive Grounding Shield Can in its proper position,

and press to make sure it is securely attached.



Replacement

4.11 Camera 5Mpixel

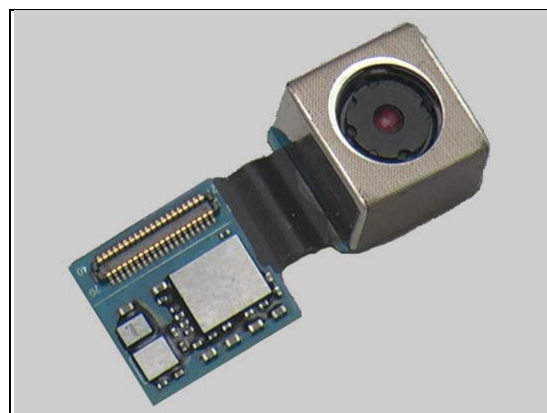
Follow the 3.1 – 3.6 Disassembly instructions!

Follow the 4.42 Removal instructions!

Carry out the replacement as described below.

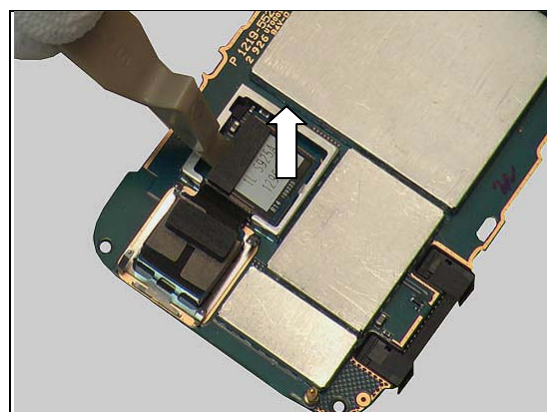
Follow the 4.22, 4.23, 4.42 Installation instructions!

Follow the 5.4 – 5.9 Reassembly instructions!



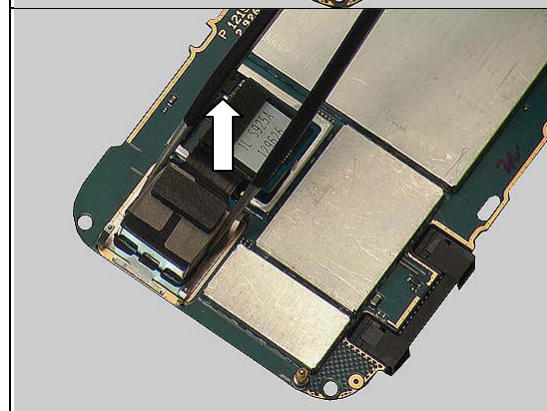
REMOVAL

Use the Front Opening Tool to release the Camera 5Mpixel from the Main PBA,



and remove it.

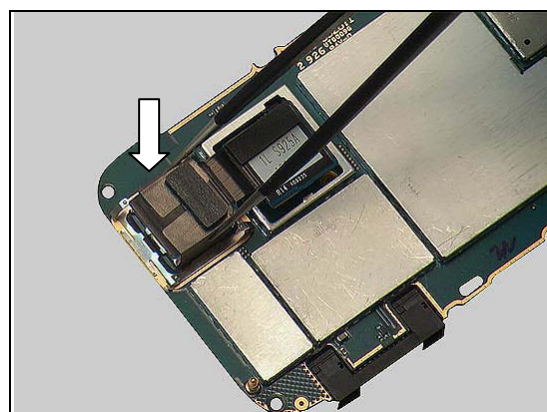
Be careful not to damage the guiding legs on the Clip Main Camera!



INSTALLATION

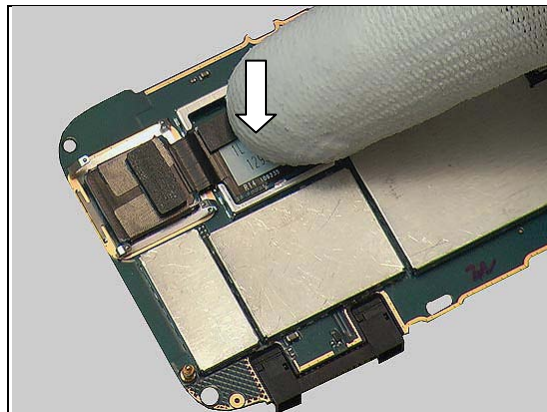
Insert the Camera 5Mpixel into the socket.

Be careful not to damage the guiding legs on the Clip Main Camera!



Replacement: Camera 5Mpixel

Use the fingers to connect the Camera 5Mpixel to the Main PBA and make sure it is securely attached.





Replacement

4.12 Camera QCIF

Follow the 3.1 – 3.2, 3.7- 3.8 Disassembly instructions!

Carry out the replacement as described below.

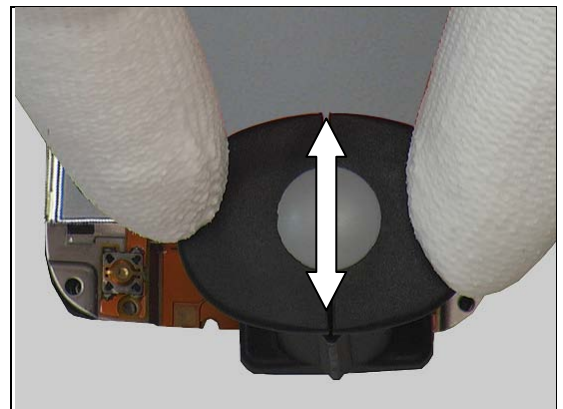
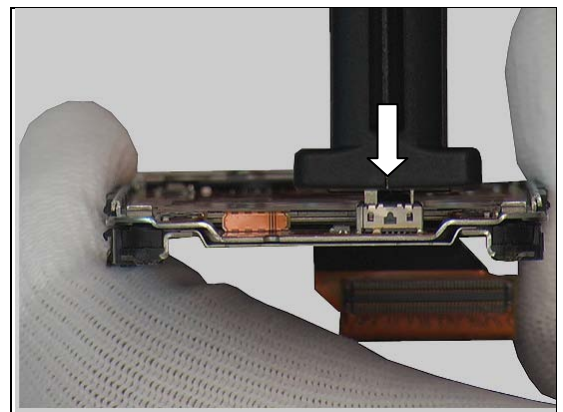
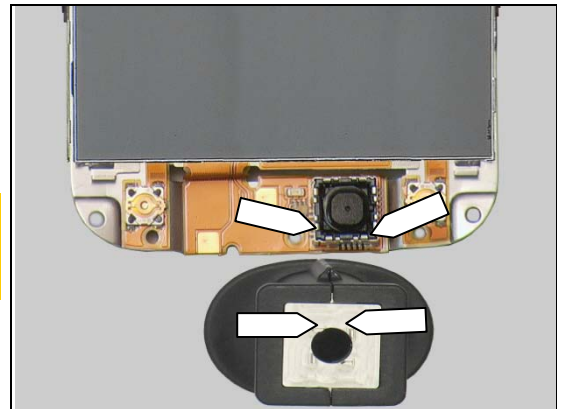
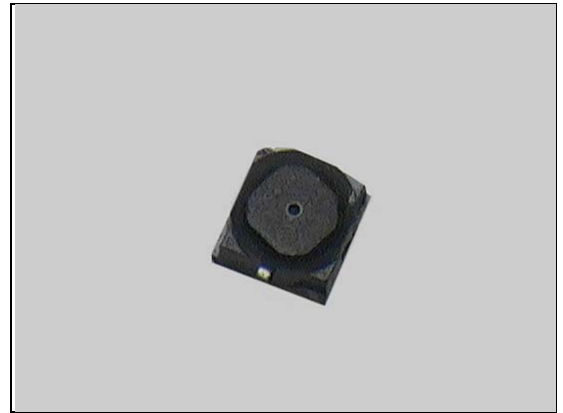
Follow the 5.2 – 5.3, 5.8 – 5.9 Reassembly instructions!

REMOVAL

Make sure the direction of blades on the Camera Removal Tool matches the position of Camera QCIF socket!

Insert the tool all the way into the camera socket with the Camera Removal Tool in the position shown in the picture.

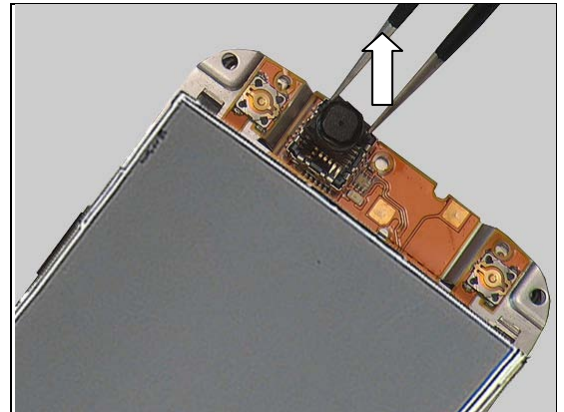
Wag the tool, as indicated by the double arrow, to release the Camera from its socket,





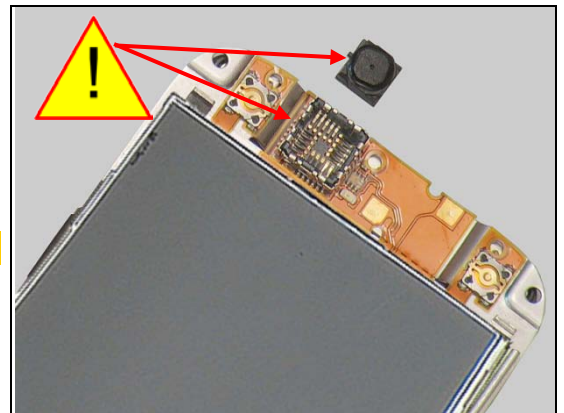
Replacement: Camera QCIF

so it can be removed.

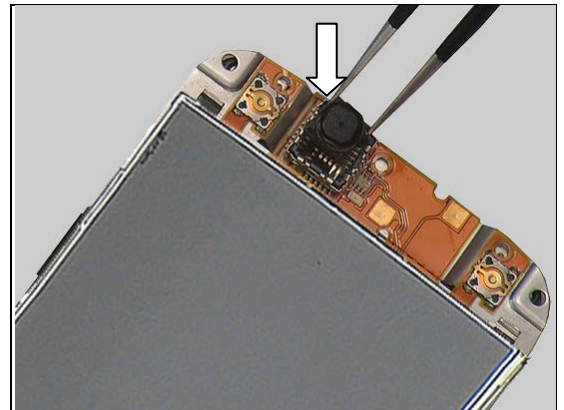


INSTALLATION

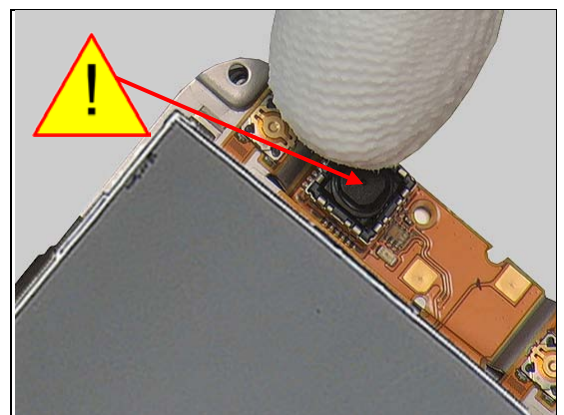
Note the keying, camera – socket!



Place the camera inside and in level with the socket,



and press with fingers, without touching the camera lens, to the bottom of the socket.



Replacement

4.13 Cap Memory Stick

Follow the 3.1 – 3.4 Disassembly instructions!
 Carry out the replacement as described below.
Follow the 5.6 – 5.9 Reassembly instructions!

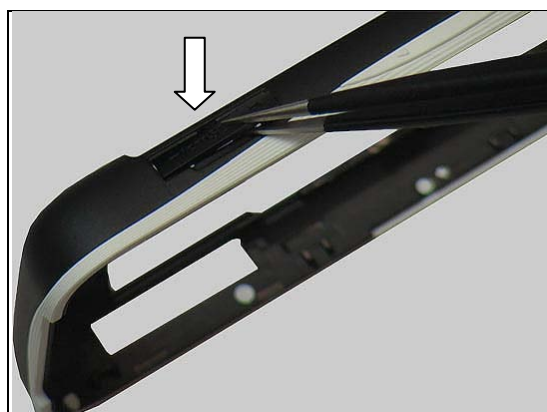
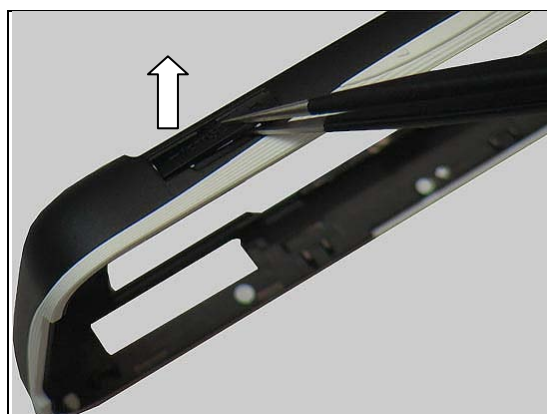
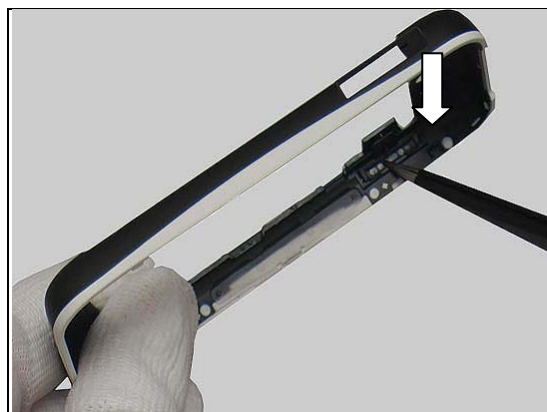
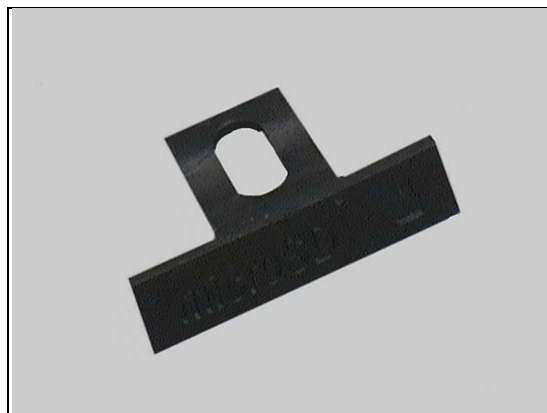
REMOVAL

Push with the tweezers on the Cap Memory Stick from inside until the cap is released,

and remove it.

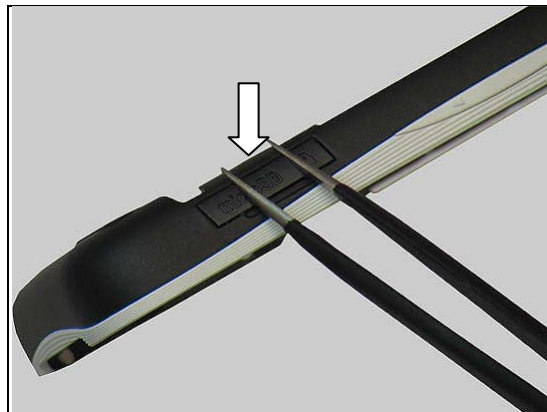
INSTALLATION

Use the tweezers to place the Cap Memory Stick in its slot,



Replacement: Cap Memory Stick

and press with tweezers,



until the Cap Memory Stick is properly installed as shown from the inside.



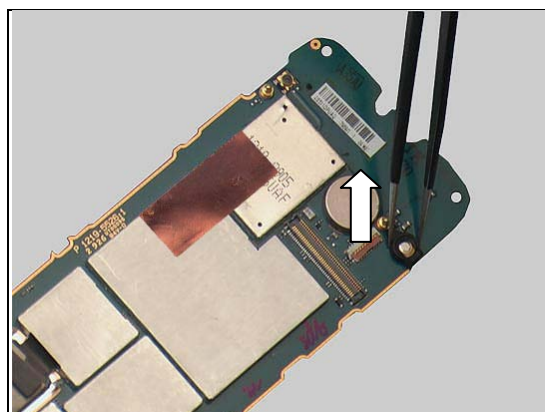
Replacement

4.14 Cap Mic

Follow the 3.1 – 3.5 Disassembly instructions!
 Carry out the replacement as described below.
Follow the 5.5 – 5.9 Reassembly instructions!

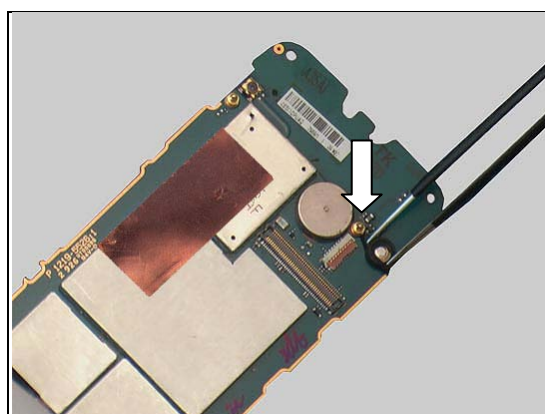
REMOVAL

Carefully remove the Cap Mic by using the tweezers.

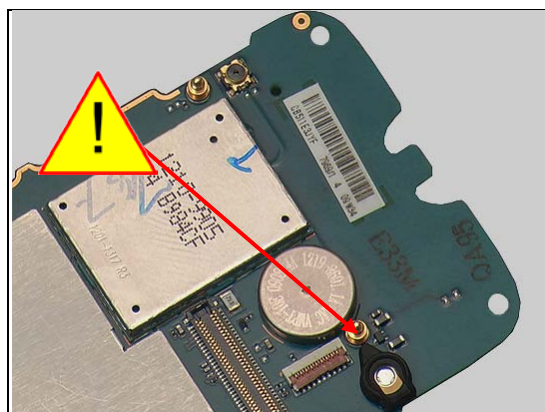


INSTALLATION

Place the Cap Mic in its proper position by using the tweezers and press to make sure it is securely attached.



Make sure the Cap Mic is installed in the direction shown in the picture.





Replacement

4.15 Cap RF

Follow the 3.1 – 3.3 Disassembly instructions!
Carry out the replacement as described below.
Follow the 5.7 – 5.9 Reassembly instructions!

REMOVAL

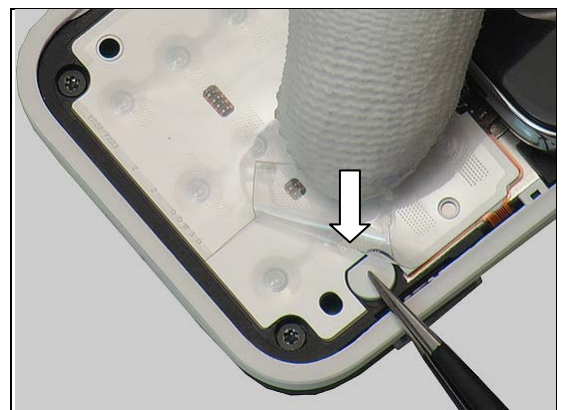
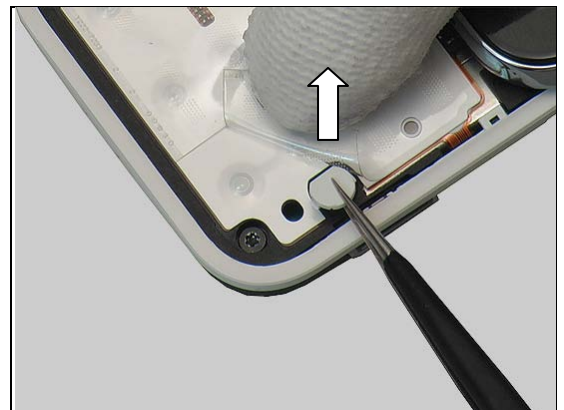
Carefully lift up the corner of the Light Guide by using the tweezers.

Be careful not to damage the Light Guide!

and remove the Cap RF as shown in picture.

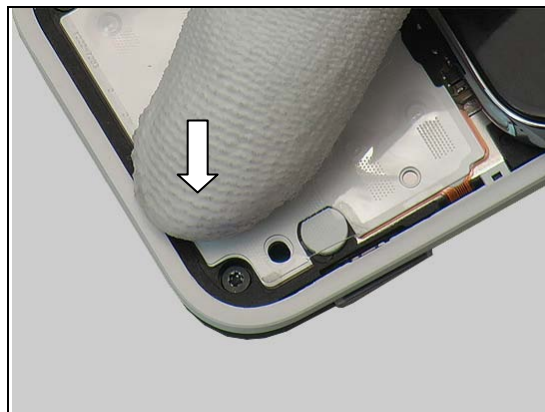
INSTALLATION

Place the Cap RF in its proper position and press to make sure it is securely attached.



Replacement: Cap RF

Remount the Light Guide.



Replacement

4.16 Clip Main Camera

Follow the 3.1 – 3.6 Disassembly instructions!
Follow the 4.11 Removal instructions!
 Carry out the replacement as described below.
Follow the 4.11 Installation instructions!
Follow the 5.4 – 5.9 Reassembly instructions!

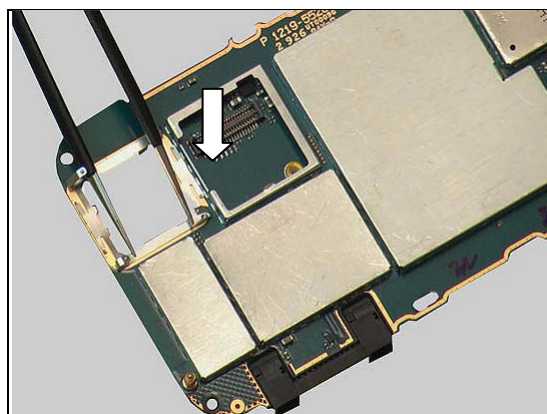
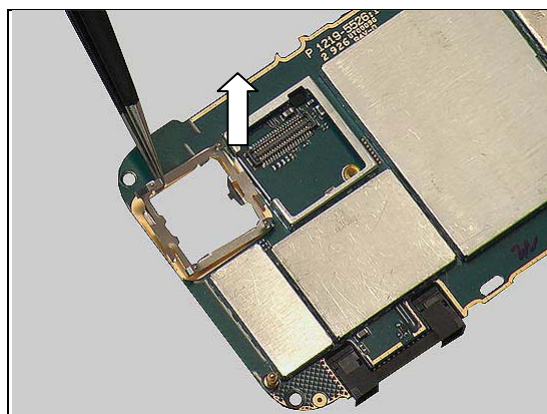
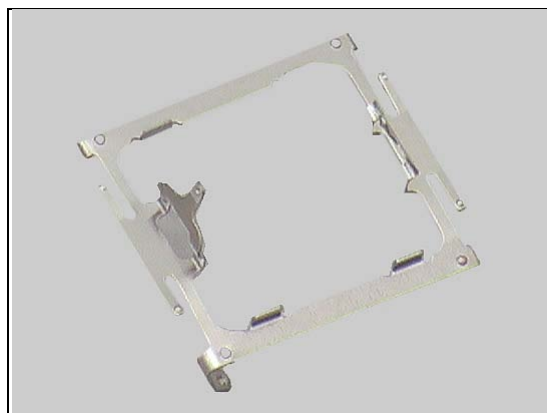
REMOVAL

Remove the Clip Main Camera by using the tweezers.

INSTALLATION

Insert the Clip Main Camera into the socket and press to make sure it is securely attached.

Be careful not to damage the guiding legs on the Clip Main Camera!



Replacement

4.17 Co-Brand

Follow the 3.1 Disassembly instructions!
 Carry out the replacement as described below.
Follow the 5.9 Reassembly instructions!

REMOVAL

Use the tweezers to push through the two holes from inside of the Battery Cover to release the Co-Brand,

and remove it.

INSTALLATION

Place the new Co-Brand in its proper position and press along the surface to make it securely attached.



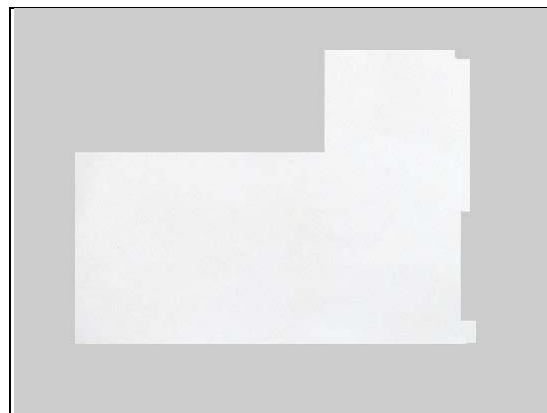
Replacement

4.18 Core Unit Label

Follow the 3.1 – 3.2 Disassembly instructions!
 Carry out the replacement as described below.
Follow the 5.8 – 5.9 Reassembly instructions!

REMOVAL

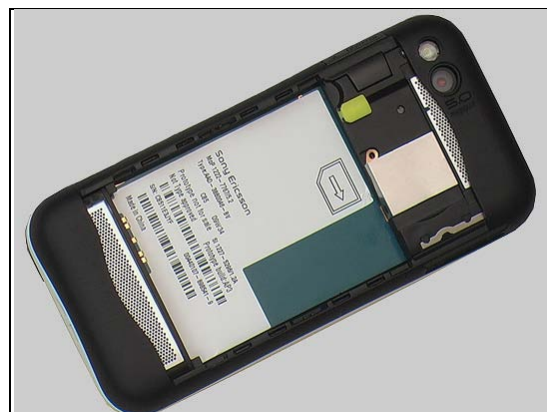
Enter the information from the old Core Unit Label into the 'LabelMake' program before removal.
 Carefully remove the Label by using the tweezers.



INSTALLATION

Check that the proper label format is loaded in the Zebra printer and write a new Label by using the 'LabelMake' software.
 Place the new Core Unit Label inside the frame as shown in the picture.

One label only is allowed!





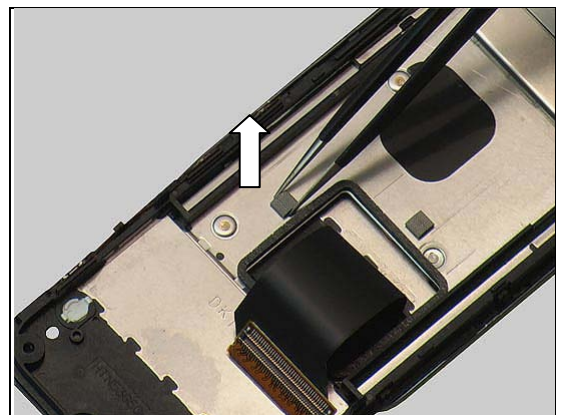
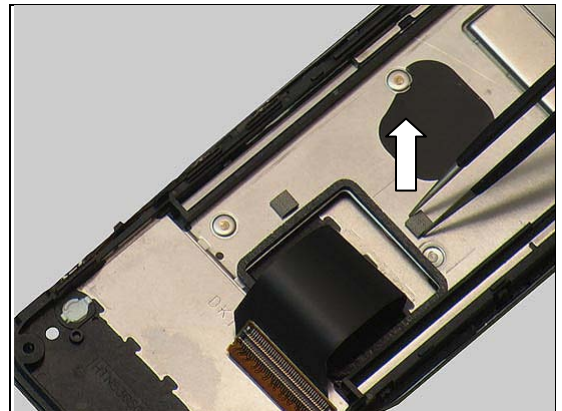
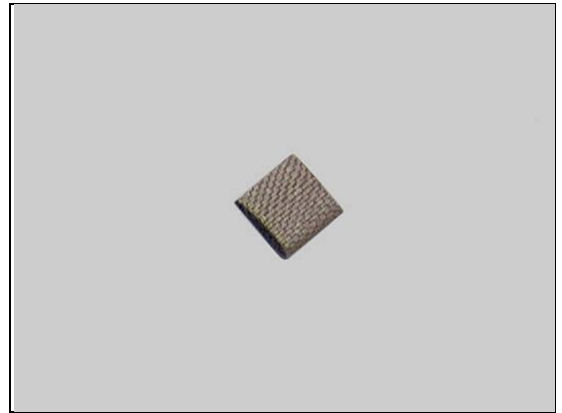
Replacement

4.19 Cushion Grounding Hinge

Follow the 3.1 – 3.5 Disassembly instructions!
Carry out the replacement as described below.
Follow the 5.5 – 5.9 Reassembly instructions!

REMOVAL

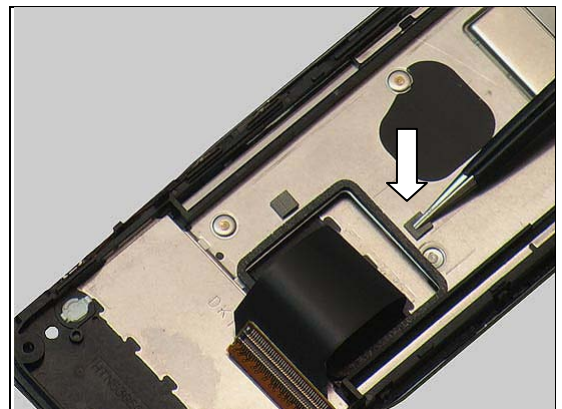
Use the tweezers to peel off the Cushion Grounding Hinge from the Hinge.



Do the same with the second one.

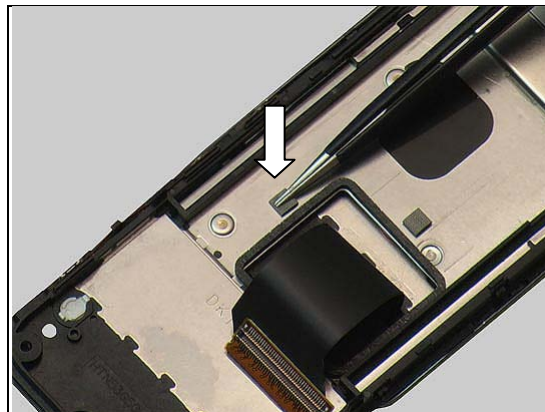
INSTALLATION

Place the Cushion Grounding Hinge in its proper position and press to make sure it is securely attached.



Replacement: Cushion Grounding Hinge

Do the same with the second one.



Replacement

4.20 Cushion Grounding Inner Frame

Follow the 3.1 – 3.6 Disassembly instructions!
 Carry out the replacement as described below.
Follow the 5.4 – 5.9 Reassembly instructions!

REMOVAL

Use the tweezers to peel off the Cushion Grounding Inner Frame as shown in the picture.

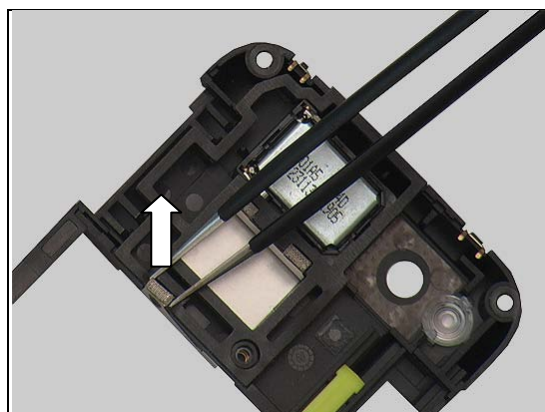
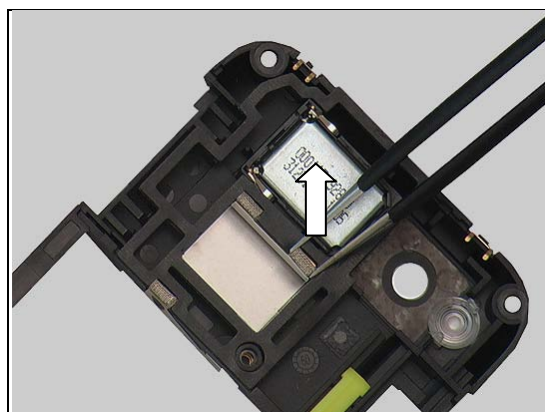
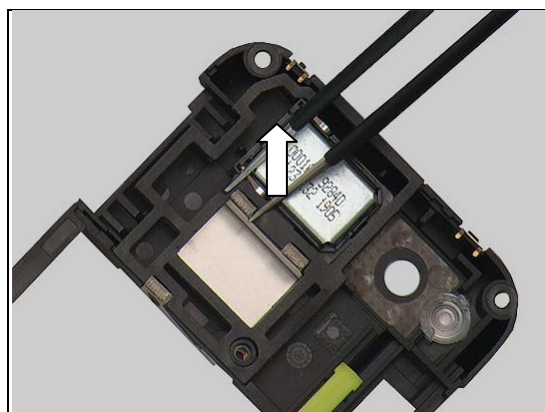
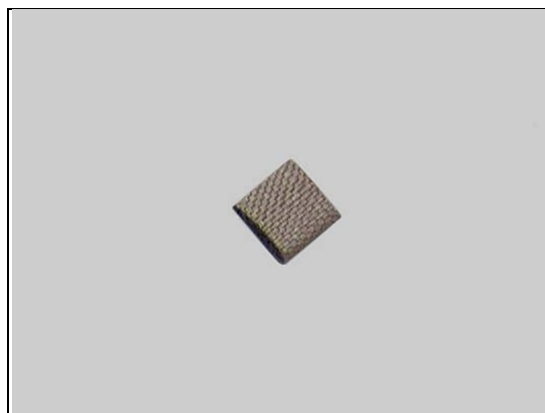
Be careful not to damage the speaker box gasket!

Do the same with the second one.

Be careful not to damage the speaker box gasket!

Do the same with the third one.

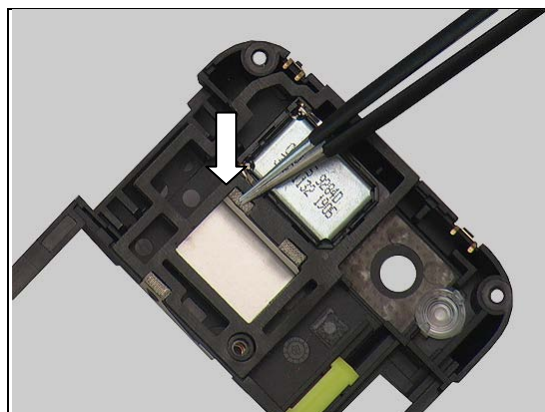
Be careful not to damage the speaker box gasket!



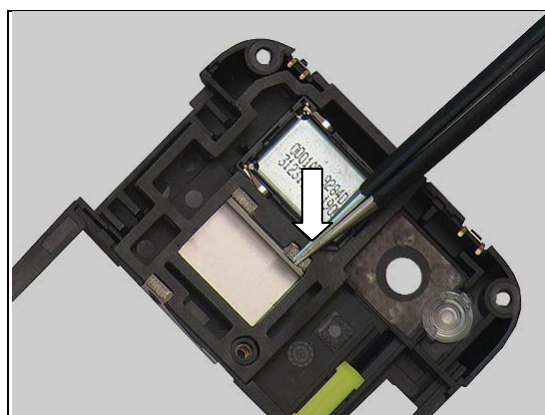
Replacement: Cushion Grounding Inner Frame

INSTALLATION

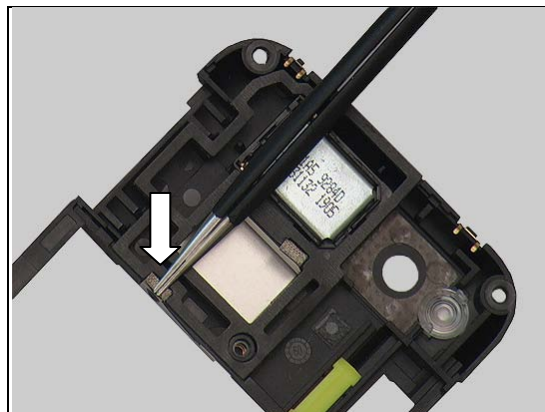
Place the Cushion Grounding Inner Frame in its proper position and press to make sure it is securely attached.



Do the same with the second one.



Do the same with the third one.





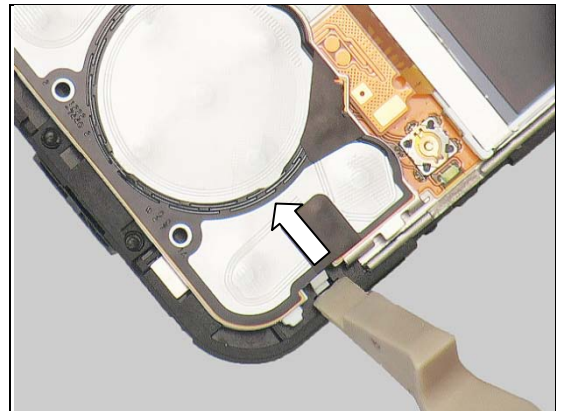
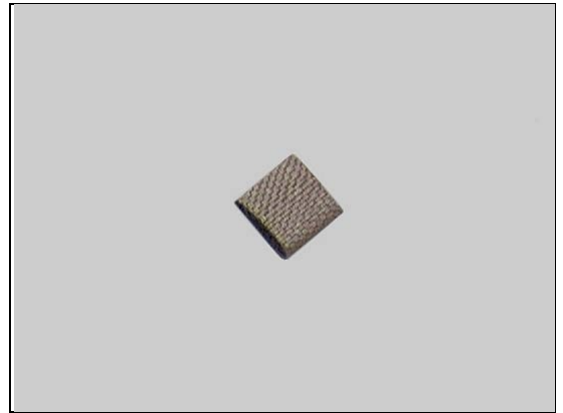
Replacement

4.21 Cushion Grounding Navigation

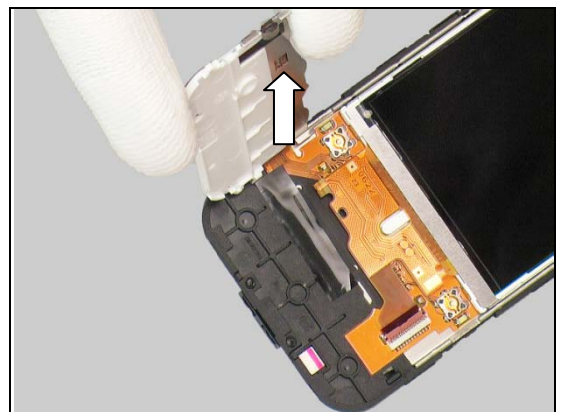
Follow the 3.1 – 3.2, 3.7 – 3.8 Disassembly instructions!
Carry out the replacement as described below.
Follow the 5.2 – 5.3, 5.8 – 5.9 Reassembly instructions!

REMOVAL

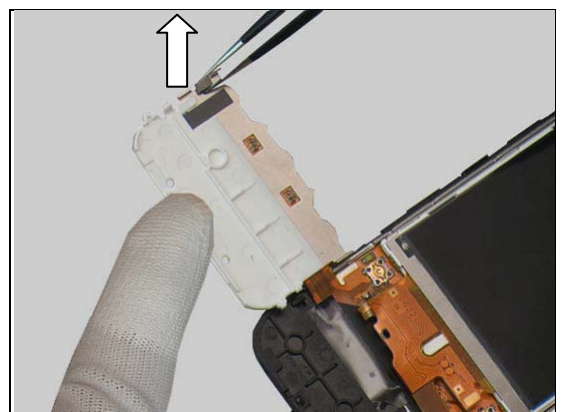
Use the Front Opening Tool to release the Navigation Support as shown in picture.



Raise the Navigation Support with fingers.



Raise the Navigation Support with fingers and carefully remove the Cushion Grounding Navigation by using the tweezers.

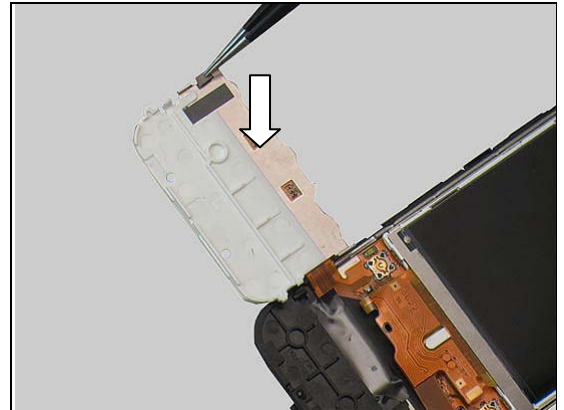




Replacement: Cushion Grounding Navigation

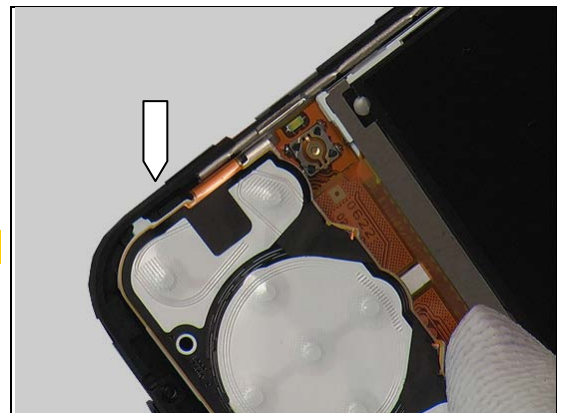
INSTALLATION

Place the Cushion Grounding Navigation in its proper position and press to make sure it is securely attached.



Insert the Navigation Support into its corresponding hook on the left side.

Be careful with the hook! It is easily damaged!



Insert the Navigation Support into its corresponding hook on the right side.

Be careful with the hook! It is easily damaged!



Replacement

4.22 Cushion Main Camera BtB

Follow the 3.1 – 3.6 Disassembly instructions!
Follow the 4.42 Removal instructions!
 Carry out the replacement as described below.
Follow the 4.42 Installation instructions!
Follow the 5.4 – 5.9 Reassembly instructions!

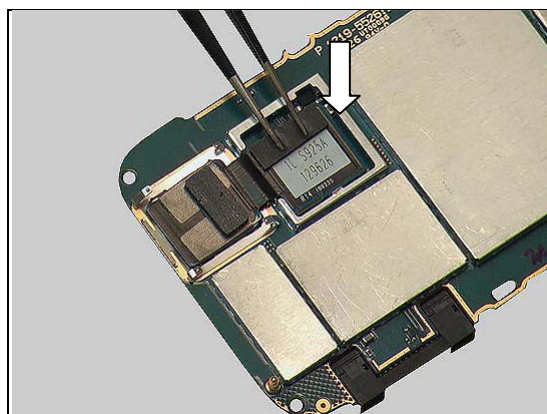
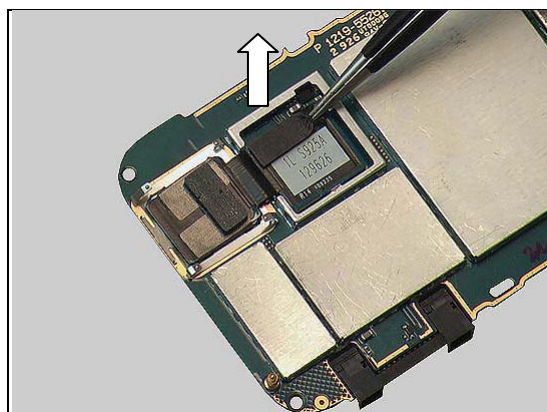
REMOVAL

Gently peel off the Cushion Main Camera BtB by using the tweezers.

INSTALLATION

Place the new Cushion Main Camera BtB in its proper position and press to make sure it is securely attached.

Make sure to remove all remains of the old Cushion before replacement!





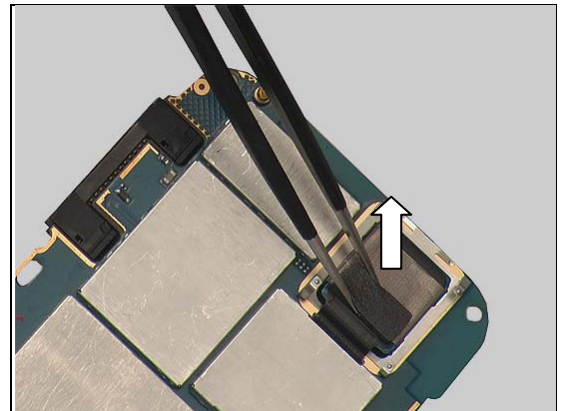
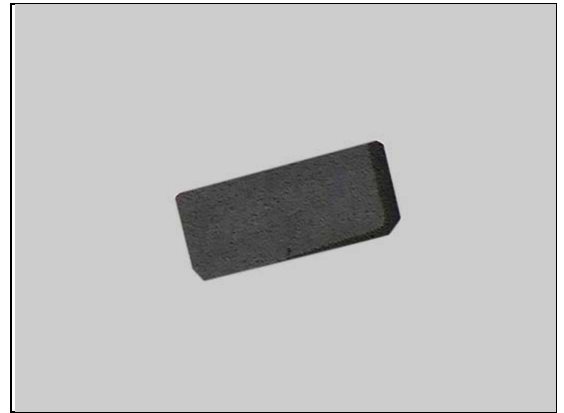
Replacement

4.23 Cushion Main Camera Cu

Follow the 3.1 – 3.6 Disassembly instructions!
Carry out the replacement as described below.
Follow the 5.4 – 5.9 Reassembly instructions!

REMOVAL

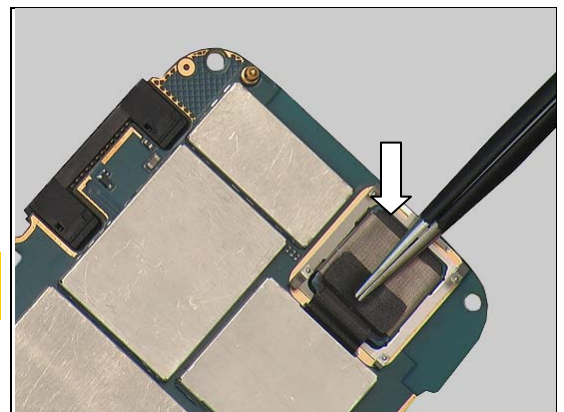
Gently peel off the Cushion Main Camera Cu by using the tweezers.



INSTALLATION

Place the new Cushion Main Camera Cu in its proper position and press to make sure it is securely attached.

Make sure to remove all remains of the old Cushion before replacement!



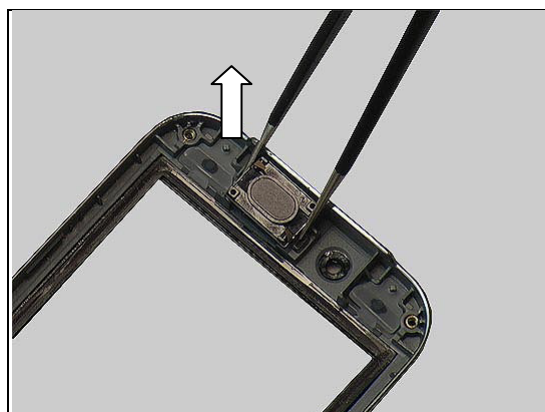
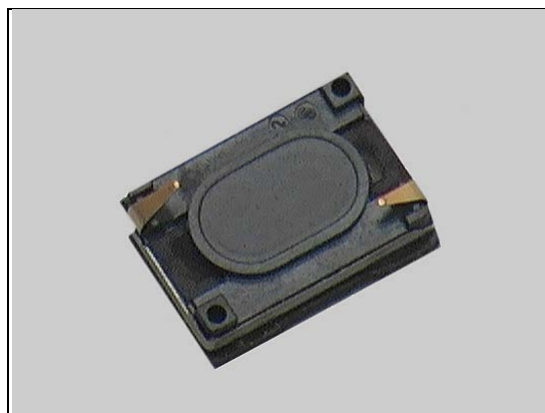
Replacement

4.24 Ear Speaker

Follow the 3.1 – 3.2, 3.7 – 3.8 Disassembly instructions!
Carry out the replacement as described below.
Follow the 5.2 – 5.3, 5.8 – 5.9 Reassembly instructions!

REMOVAL

Remove the Ear Speaker from the Front Cover by using the tweezers.

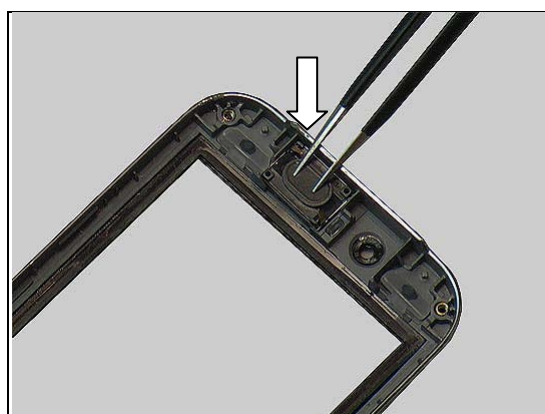


INSTALLATION

Mount the new Adhesive Ear Speaker on the Front Cover. Place the Ear Speaker in its proper position and press to make sure it is securely attached.

Make sure to remove all remains of the old Adhesive Ear Speaker before replacement!

Use a new Adhesive Ear Speaker every time the Ear Speaker is removed!





Replacement

4.25 FPC Main Keyboard

Follow the 3.1 – 3.5 Disassembly instructions!
Carry out the replacement as described below.
Follow the 5.5 – 5.9 Reassembly instructions!

REMOVAL

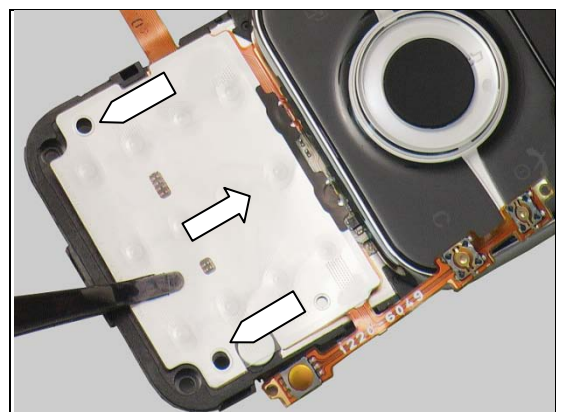
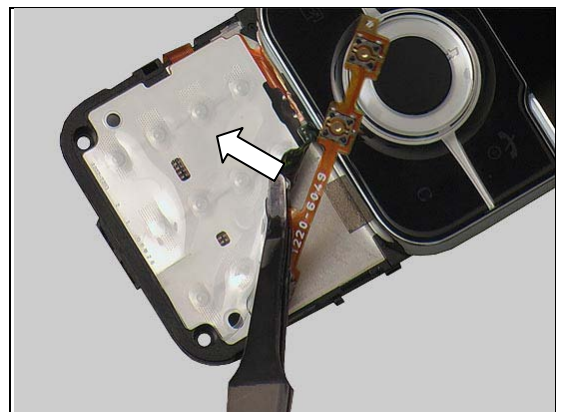
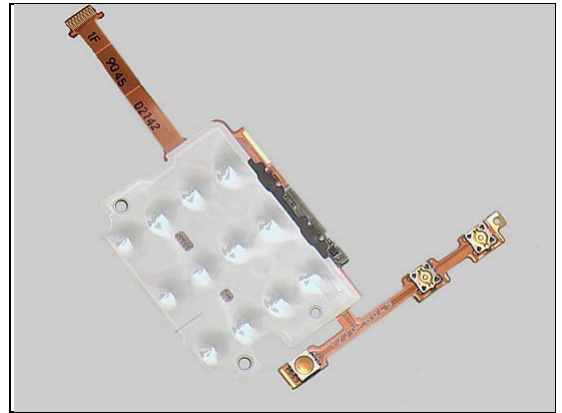
Use the Flex Film Assembly Tool to release the right side of FPC Main Keyboard from the Hinge.

Carefully peel off the FPC Main Keyboard as shown in the picture.

Scrap! Not to be reused!

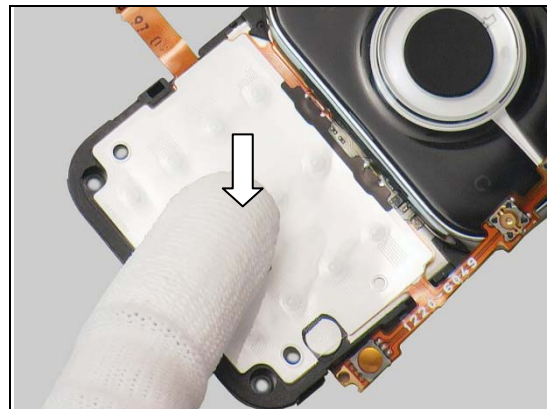
INSTALLATION

Place the new FPC Main Keyboard in its allocated position according to the corresponding holes,

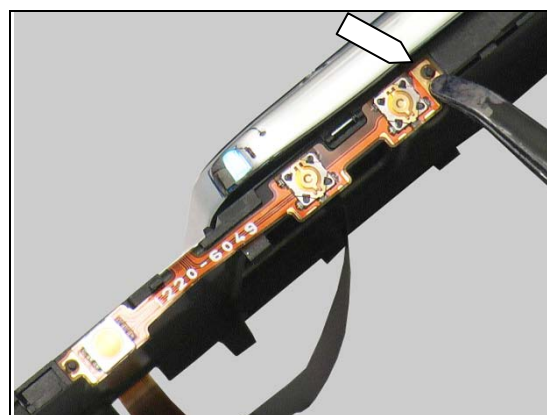


Replacement: FPC Main Keyboard

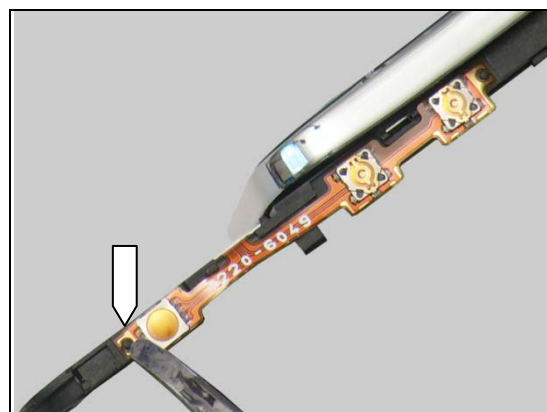
and press to make sure it is securely attached.



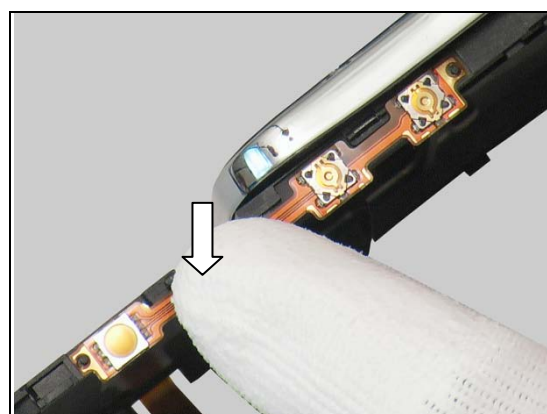
Insert the top right portion of FPC Main Keyboard into the guiding pin on the Hinge,



Insert the bottom right portion of FPC Main Keyboard into the guiding pin on the Hinge,



and press with fingers to attach this side.



Replacement

4.26 FPC Slider Navigation

Follow the 3.1 – 3.9 Disassembly instructions!

Follow the 4.12 Removal instructions!

Carry out the replacement as described below.

Follow the 4.12, 4.36, 4.43 Installation instructions!

Follow the 5.1 – 5.9 Reassembly instructions!

REMOVAL

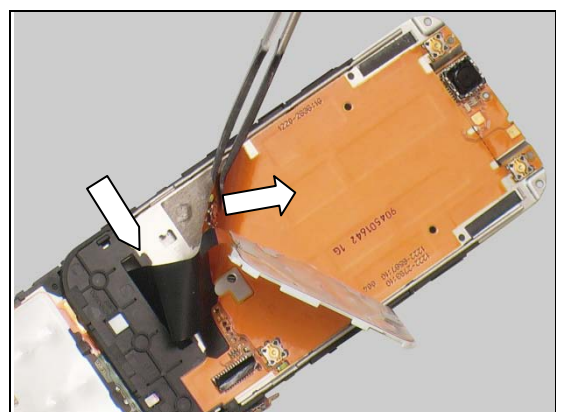
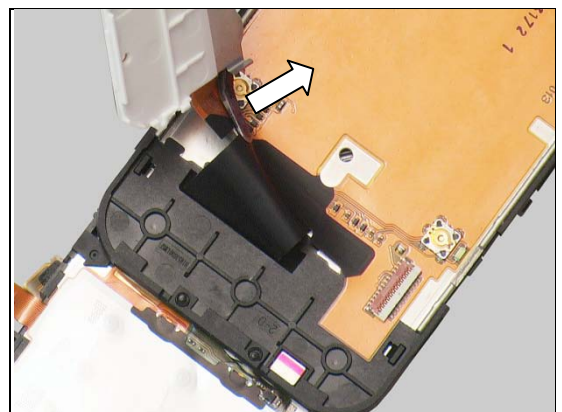
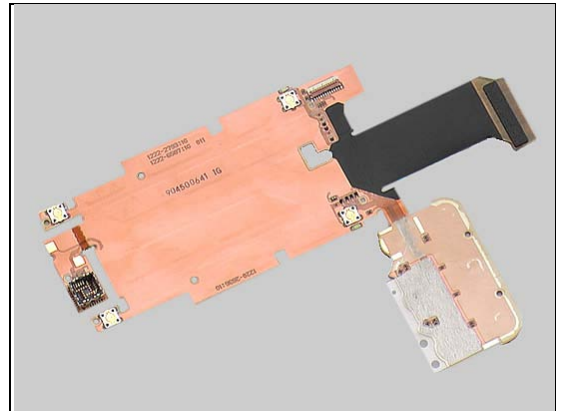
Gently use the Flex Film Assembly Tool to peel off the Foil HtH.

Scrap! Not to be reused!

Use the Flex Film Assembly Tool to peel off the FPC Slider-Navigation starting from the left side.

Pull out the HtH-flex through the hole in the middle of the Hinge and peel off the FPC Slider-Navigation from the Hinge.

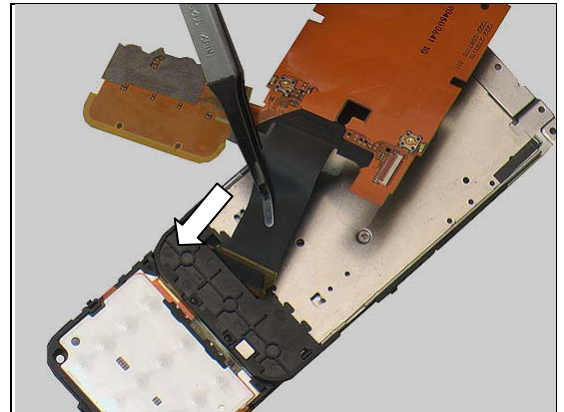
Scrap! Not to be reused!



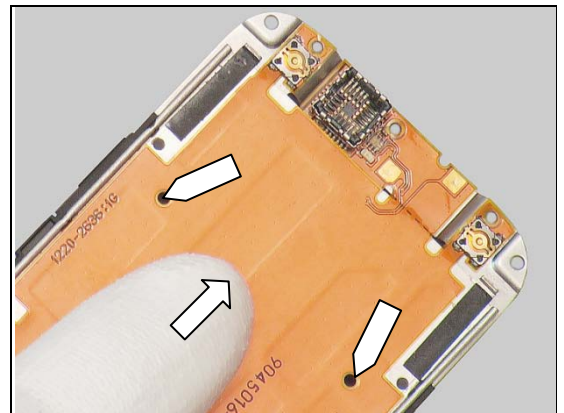
Replacement: FPC Slider Navigation

INSTALLATION

Thread the HtH-flex through the hole in the middle of the Hinge.

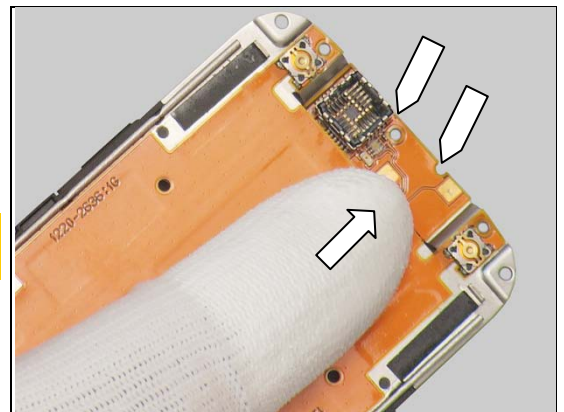


Align the FPC Slider Navigation to the guiding hole and attach the FPC on the Hinge.

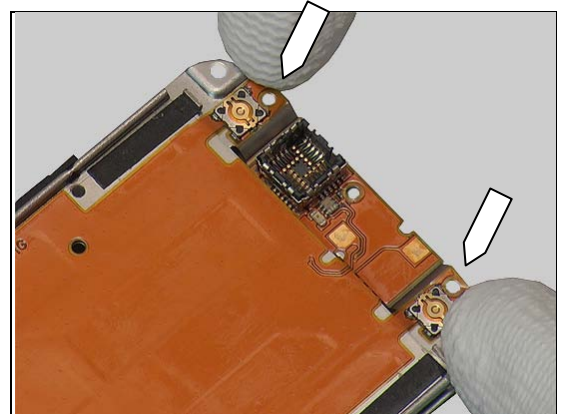


Align towards the guiding hole on the top and press with the fingers.

Note! Make sure there are no any air bubbles under this flex and carefully align this part!



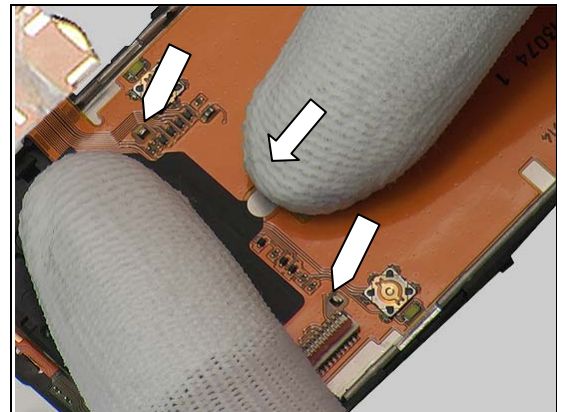
Attach the parts of the FPC Slider Navigation that are under the Key A/B according to the two guiding holes.



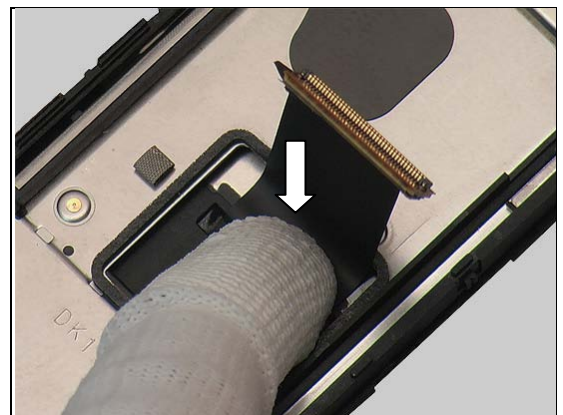


Replacement: FPC Slider Navigation

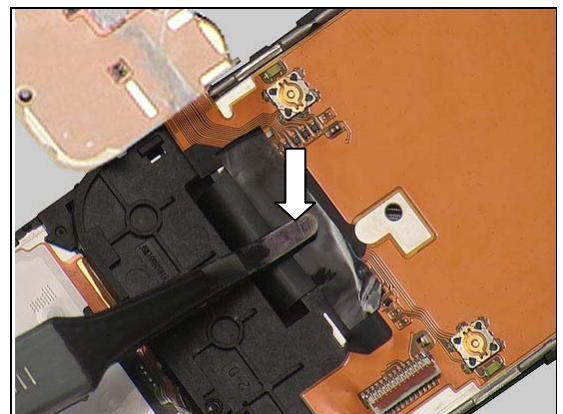
Press firmly over the whole area and make sure the two guiding holes at the bottom of the FPC Slider Navigation are aligned as shown in the picture.



Align the HtH- flex between the marks on the Hinge and press firmly to attach the HtH-flex.



Place the Foil HtH in its proper position and press to make sure it is securely attached.



Replacement

4.27 Gasket Battery Cover

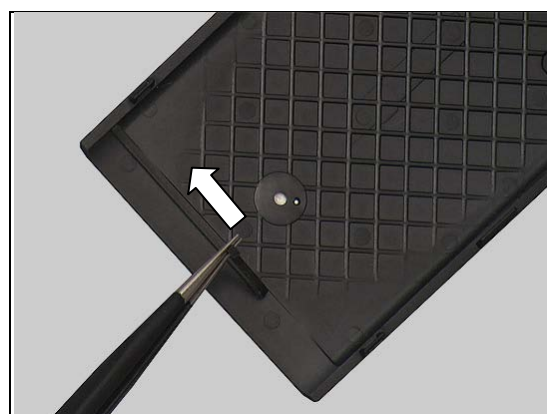
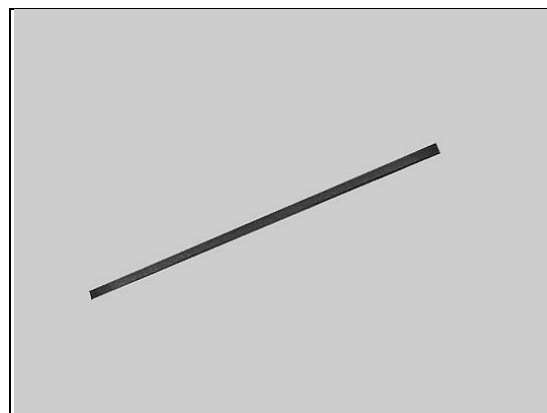
Follow the 3.1 Disassembly instructions!

Carry out the replacement as described below.

Follow the 5.9 Reassembly instructions!

REMOVAL

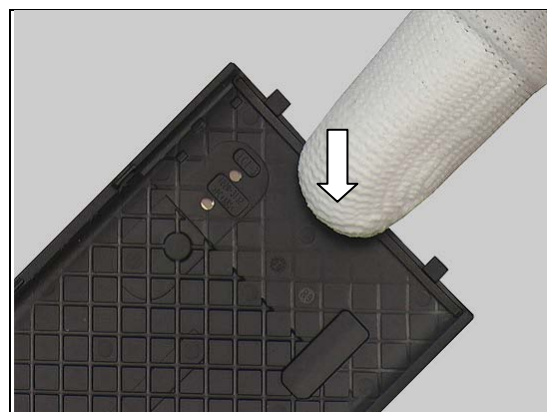
Gently use the tweezers to remove the Gasket Battery Cover as shown in the picture.



Do the same with the second one.

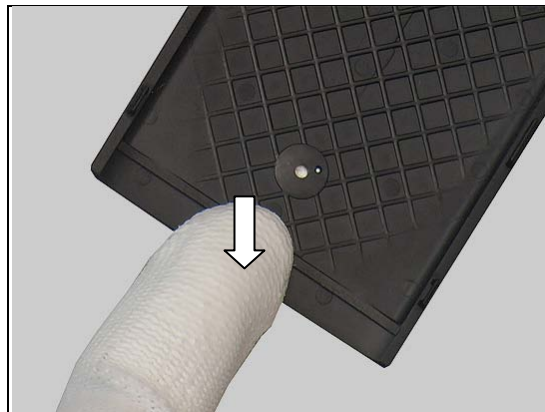
INSTALLATION

Place the Gasket Battery Cover in its proper position and press to make sure it is securely attached.



Replacement: Gasket Battery Cover

Do the same with the second one.



Replacement

4.28 Gasket VT Camera

Follow the 3.1 – 3.2, 3.7 – 3.8 Disassembly instructions!
Carry out the replacement as described below.
Follow the 5.2 – 5.3, 5.8 – 5.9 Reassembly instructions!

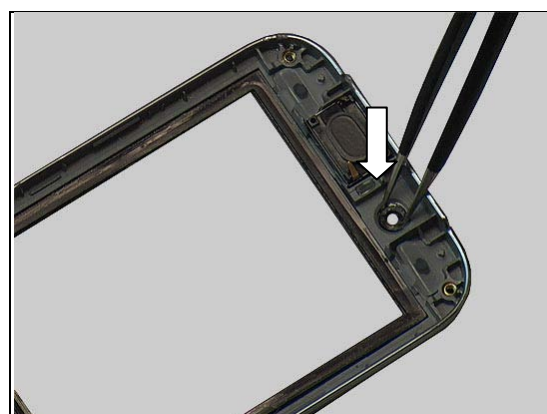
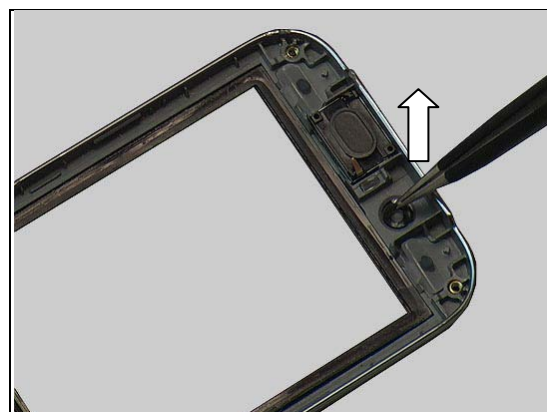
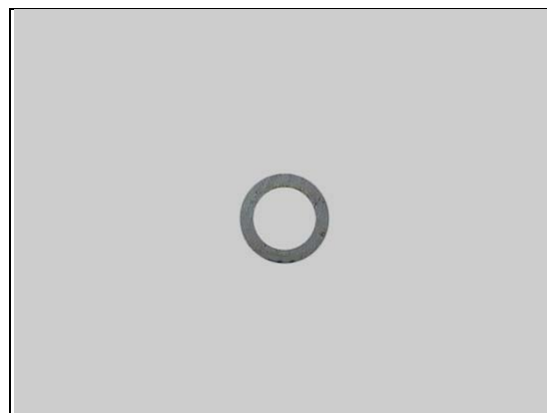
REMOVAL

Carefully remove the Gasket VT Camera by using the tweezers.

INSTALLATION

Place the Gasket VT Camera in its socket on top of the Front Cover and press to make sure it is securely attached.

Note! Make sure the Gasket VT Camera is invisible through the Camera Window!



Replacement

4.29 Key A/B

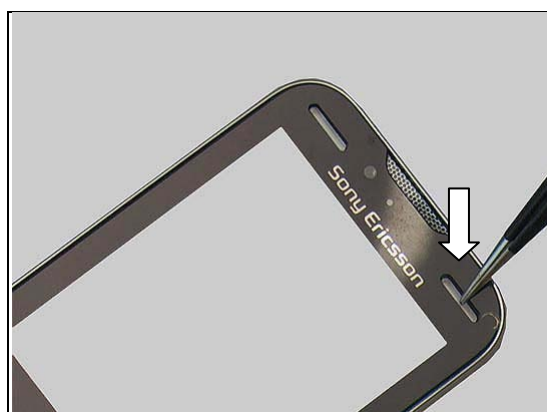
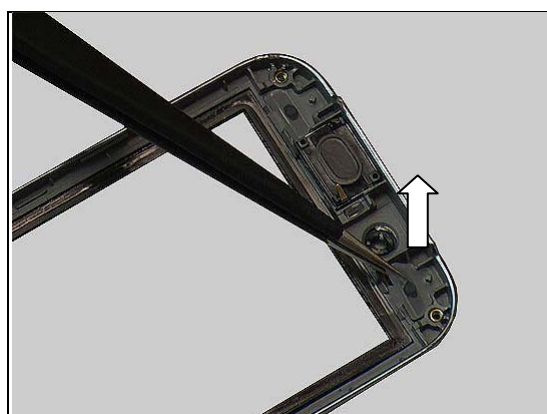
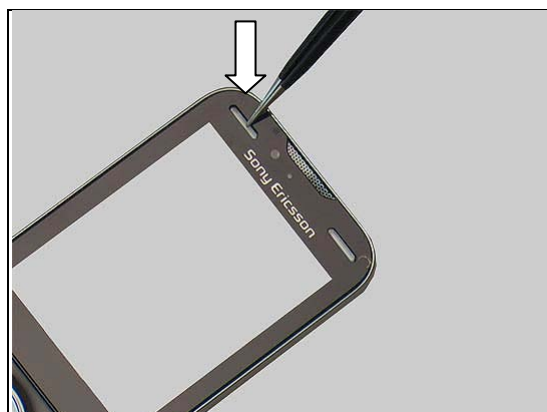
Follow the 3.1 – 3.2, 3.7 – 3.8 Disassembly instructions!
 Carry out the replacement as described below.
Follow the 5.2 – 5.3, 5.8 – 5.9 Reassembly instructions!

REMOVAL

Push with the tweezers on the Key A/B from outside until the key is released,

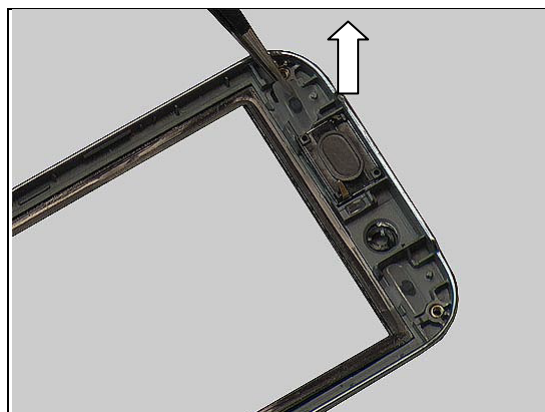
and remove it.

Do the same with the second one.



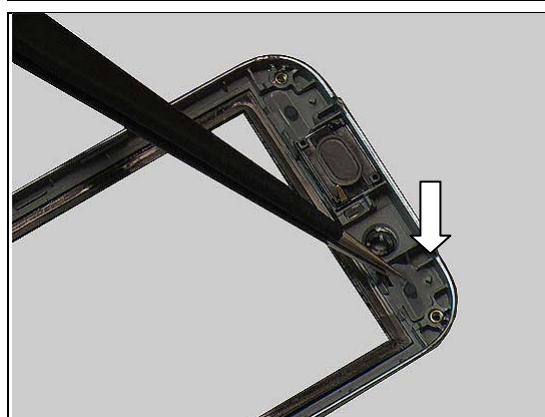
Replacement: Key A/B

and remove it.

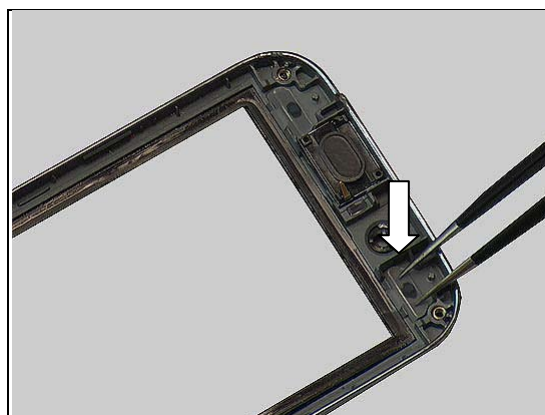


INSTALLATION

Place the Key A/B on top of its corresponding hole,



and push by using the tweezers,



until the Key A/B is properly installed as shown from the inside,

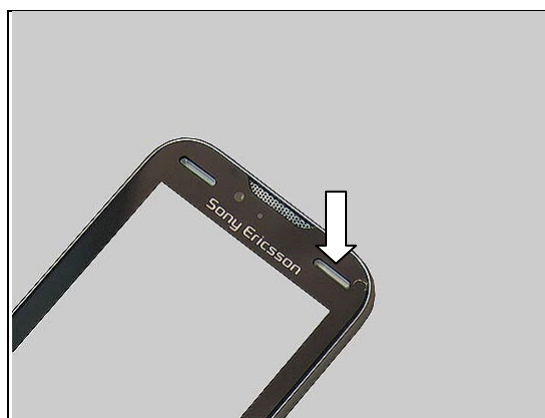


Replacement: Key A/B

and the outside.



Do the same with the second one.





Replacement

4.30 Key Camera

Follow the 3.1 – 3.4 Disassembly instructions!
Carry out the replacement as described below.
Follow the 5.6 – 5.9 Reassembly instructions!

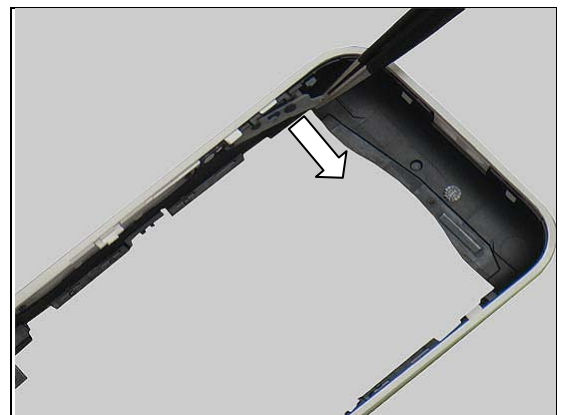
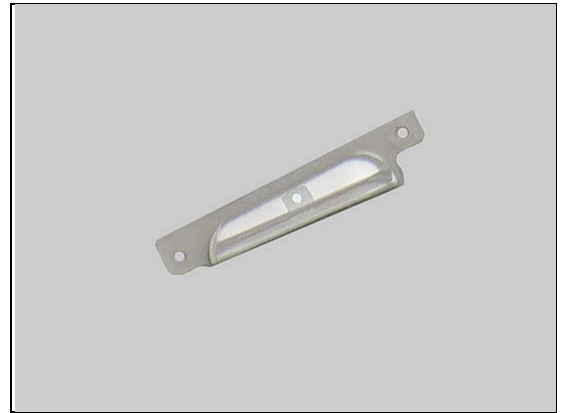
REMOVAL

Push with the tweezers on the Key Camera from outside until the key is released,

and remove it.

INSTALLATION

Place the ends of the Key Camera in its corresponding pockets and push by using the tweezers,



Replacement: Key Camera

until the Key Camera is properly installed as shown from the inside,



and the outside, with the direction shown in the picture.



Replacement

4.31 Key Left

Follow the 3.1 – 3.2, 3.7 – 3.8 Disassembly instructions!
 Carry out the replacement as described below.
Follow the 5.2 – 5.3, 5.8 – 5.9 Reassembly instructions!

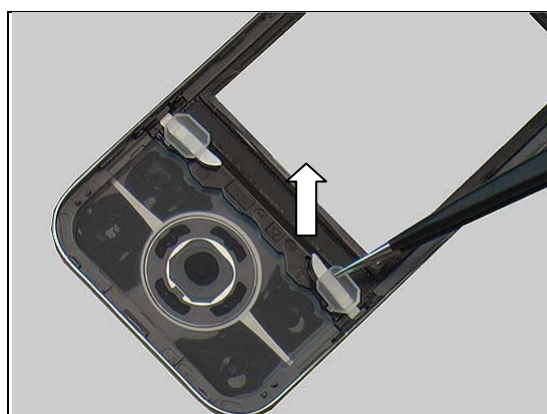
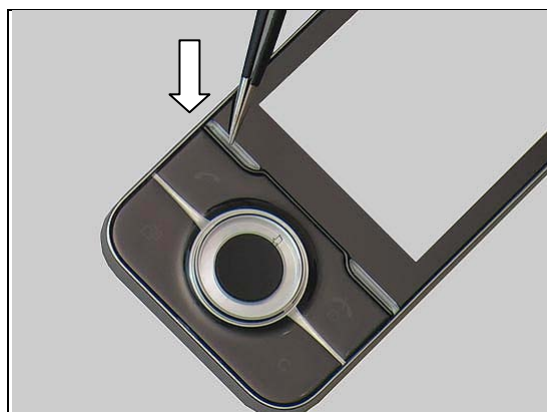
REMOVAL

Push with the tweezers on the Key Left from the outside until the key is released,

and remove it.

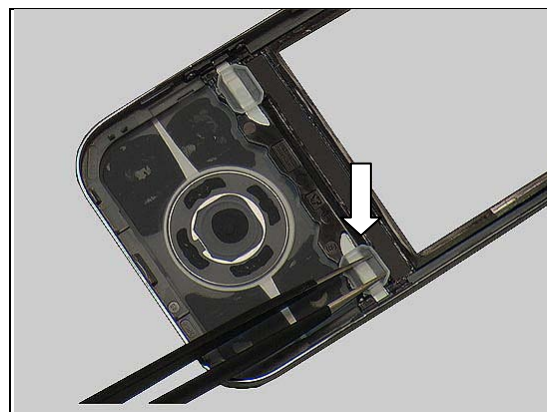
INSTALLATION

Place the Key Left on top of its corresponding hole,



Replacement: Key Left

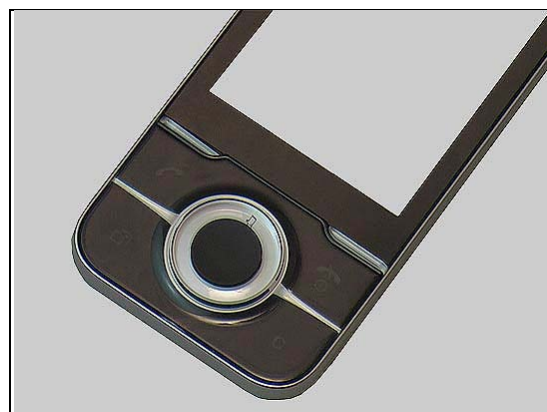
and push by using the tweezers,



until the Key Left is properly installed as shown from the inside,



and the outside.



Replacement

4.32 Key Right

Follow the 3.1 – 3.2, 3.7 – 3.8 Disassembly instructions!
 Carry out the replacement as described below.
Follow the 5.2 – 5.3, 5.8 – 5.9 Reassembly instructions!

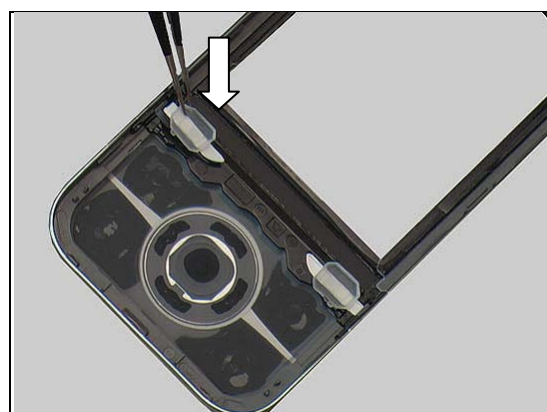
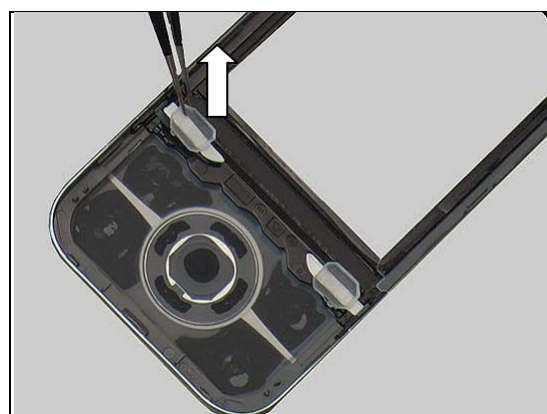
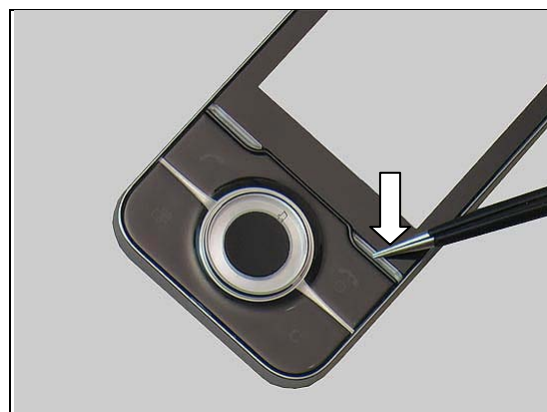
REMOVAL

Push with the tweezers on the Key Right from the outside until the key is released,

and remove it.

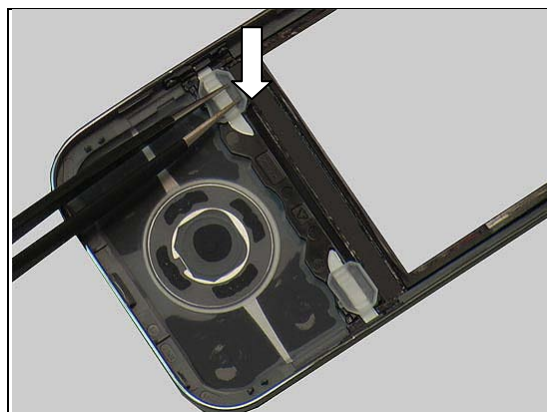
INSTALLATION

Place the Key Right on top of its corresponding hole,



Replacement: Key Right

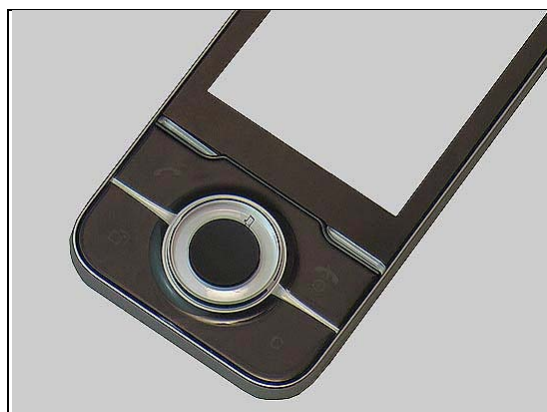
and push by using the tweezers,



until the Key Right is properly installed as shown from the inside,



and the outside.



Replacement

4.33 Key Volume

Follow the 3.1 – 3.4 Disassembly instructions!
 Carry out the replacement as described below.
Follow the 5.6 – 5.9 Reassembly instructions!

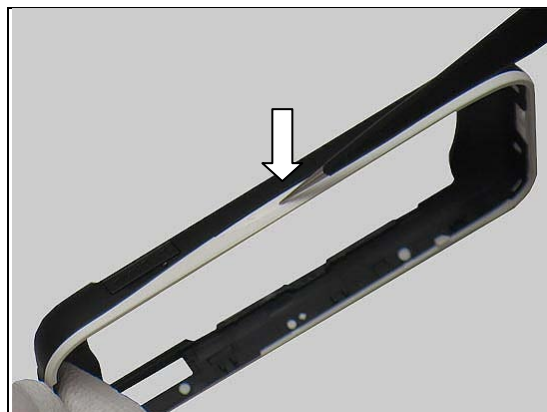
REMOVAL

Push with the tweezers on the Key Volume from the outside until the key is released,

and remove it.

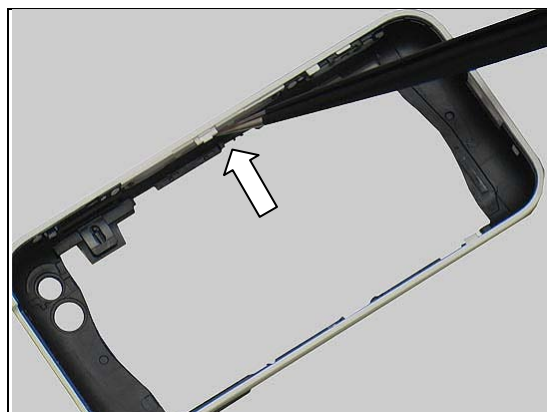
INSTALLATION

Place the Key Volume on top of its corresponding hole,



Replacement: Key Volume

and push by using the tweezers,



until the Key Volume is properly installed as shown from the inside,



and the outside.



Replacement

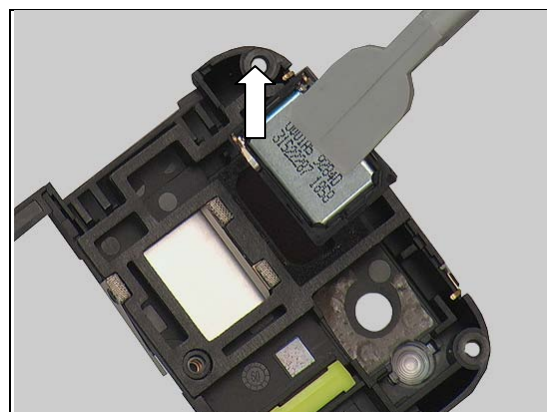
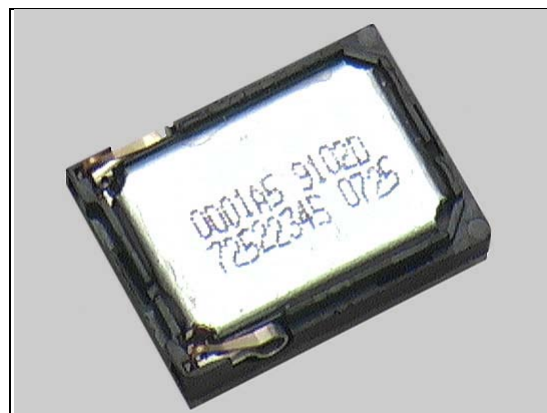
4.34 Loudspeaker (11x15)

Follow the 3.1 – 3.6 Disassembly instructions!
 Carry out the replacement as described below.
Follow the 5.4 – 5.9 Reassembly instructions!

REMOVAL

Remove the Loudspeaker (11x15) by using the Speaker Cover Tool.

Be careful not to damage the speaker box gasket!

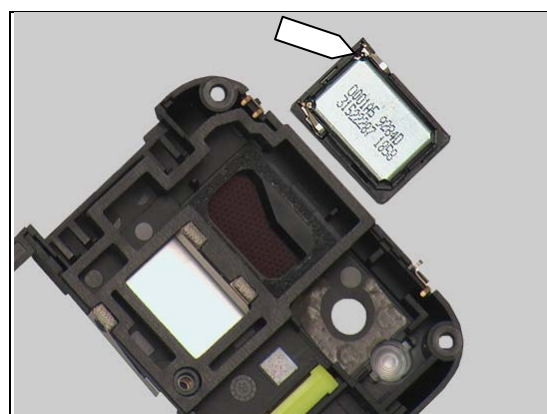


INSTALLATION

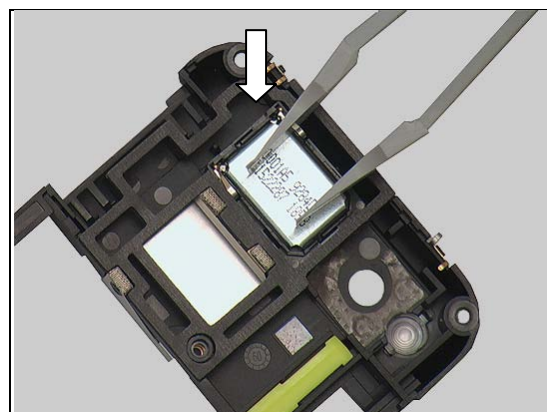
Mount a new Adhesive Loudspeaker (11x15).
 Make sure that the guiding pin of the Loudspeaker (11x15) is located in accordance with the pointer in the picture.

Make sure to remove all remains of the old Adhesive Loudspeaker (11x15) before replacement!

Use a new Adhesive Loudspeaker (11x15) every time the Loudspeaker (11x15) is removed!



Place the Loudspeaker (11x15) in its proper position and press to make sure it is securely attached.



Replacement

4.35 Loudspeaker (9x18)

Follow the 3.1 – 3.6 Disassembly instructions!
 Carry out the replacement as described below.
Follow the 5.4 – 5.9 Reassembly instructions!

REMOVAL

Remove the Loudspeaker (9x18) by using the Speaker Cover Tool.

INSTALLATION

Mount a new Adhesive Loudspeaker (9x18).
 Make sure that the guiding pin of the Loudspeaker (9x18) is located in accordance with the pointer in the picture.

Make sure to remove all remains of the old Adhesive Loudspeaker (9x18) before replacement!

Use a new Adhesive Loudspeaker (9x18) every time the Loudspeaker (9x18) is removed!

Place the Loudspeaker (9x18) in its proper position and press to make sure it is securely attached.



Replacement

4.36 Navigation Support

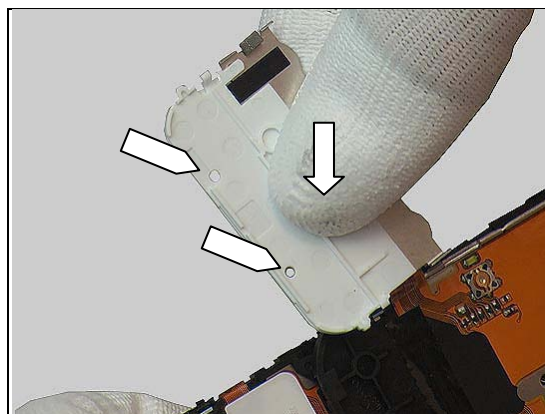
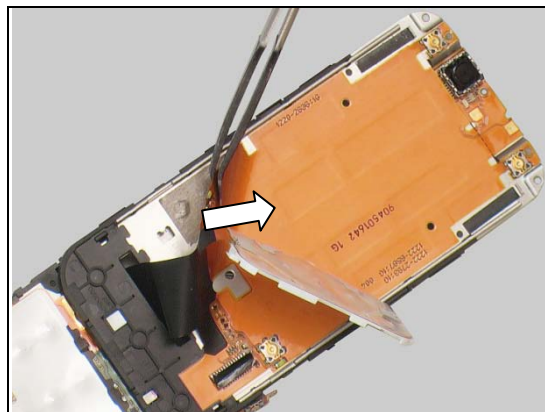
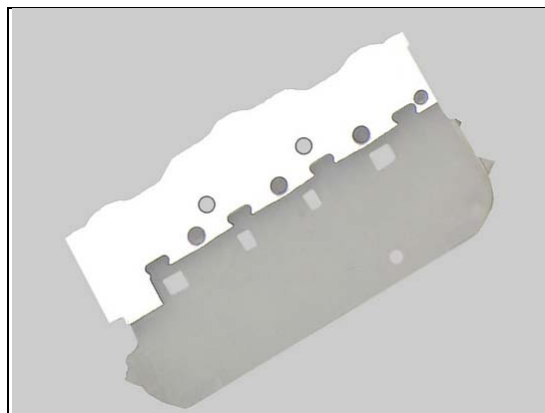
Follow the 3.1 – 3.9 Disassembly instructions!
Follow the 4.26 Removal instructions!
 Carry out the replacement as described below.
Follow the 4.21, 4.26 Installation instructions!
Follow the 5.1 – 5.9 Reassembly instructions!

REMOVAL

Scrap! Not to be reused!
Replace the FPC Slider Navigation every time the Navigation Support is replaced!

INSTALLATION

Place the new Navigation Support in its proper position according to its two corresponding holes and press with fingers to make sure it is securely attached.



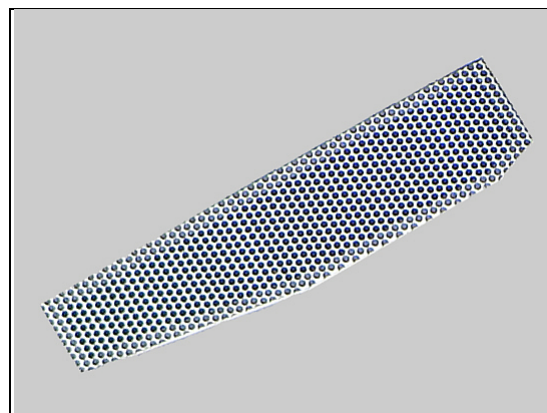
Replacement

4.37 Net Speaker Bottom

Follow the 3.1 – 3.4 Disassembly instructions!
 Carry out the replacement as described below.
Follow the 5.6 – 5.9 Reassembly instructions!

REMOVAL

Use the tweezers to remove the Net Speaker Bottom as shown in the picture.

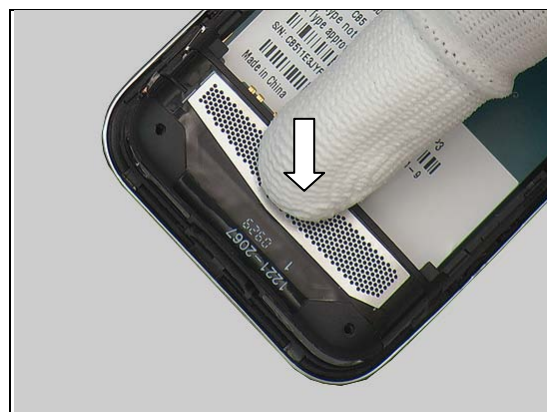


INSTALLATION

Place the Net Speaker Bottom in its proper position and align the Net Speaker Bottom to the white line on the Inner Frame as shown in the picture.



Press with fingers to make sure it is securely attached.



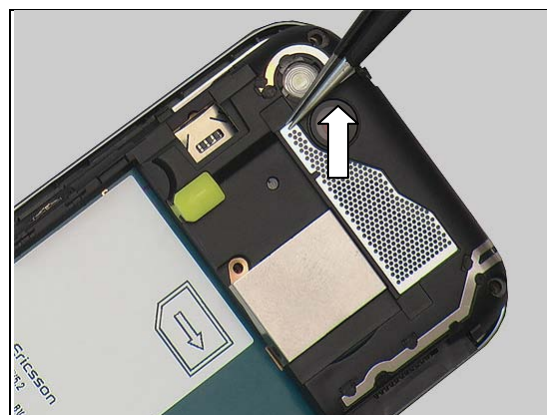
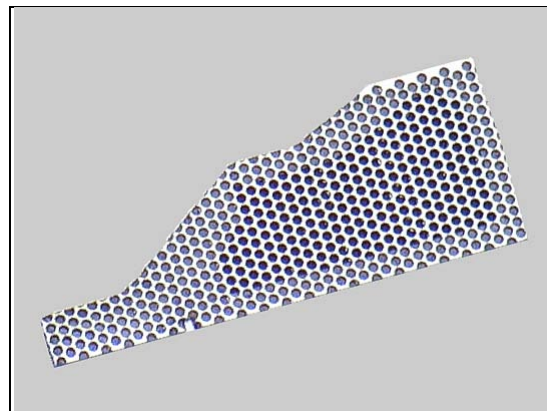
Replacement

4.38 Net Speaker Top

Follow the 3.1 – 3.4 Disassembly instructions!
 Carry out the replacement as described below.
Follow the 5.6 – 5.9 Reassembly instructions!

REMOVAL

Use the tweezers to remove the Net Speaker Top as shown in the picture.



INSTALLATION

Place the Net Speaker Top in its proper position according to the anchor point as shown in the picture and align along the edge.



Press with finger to make sure it is securely attached.





Replacement

4.39 Shield Can Lid BB1

Follow the 3.1 – 3.6 Disassembly instructions!
Follow the 4.10 Removal instructions!
Carry out the replacement as described below.
Follow the 4.10 Installation instructions!
Follow the 5.4 – 5.9 Reassembly instructions!

REMOVAL

Insert the tweezers into the corners of the Shield Can Lid BB1 and pull upwards to release it,

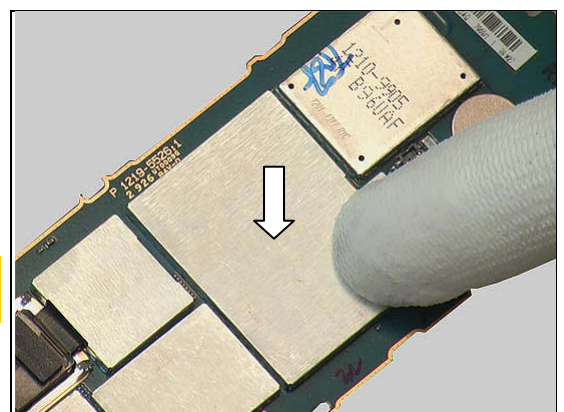
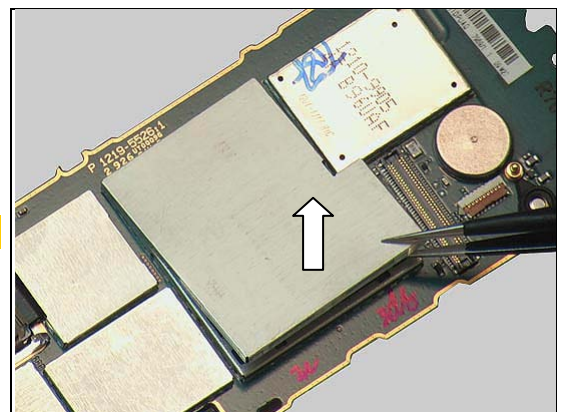
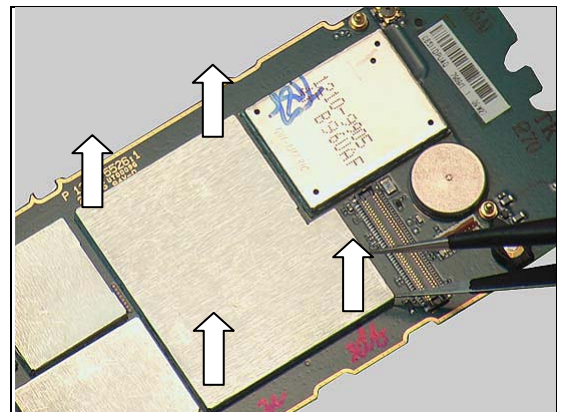
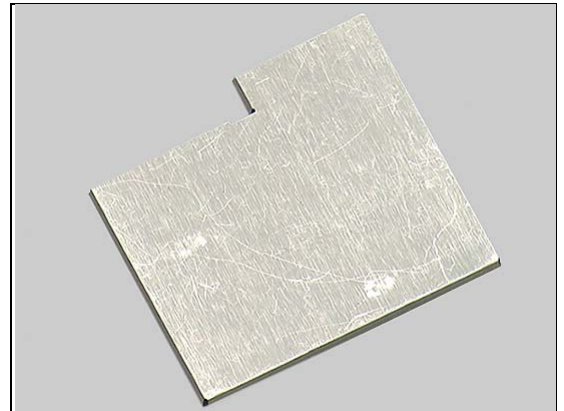
and remove it.

Scrap! Not to be reused!

INSTALLATION

Place the new Shield Can Lid BB1 on top of the Shield fence and press gently until it is securely attached.

Note! Make sure the 'Corner' near the Tiger module is properly attached!





Replacement

4.40 Shield Can Lid BB2

Follow the 3.1 – 3.6 Disassembly instructions!
Carry out the replacement as described below.
Follow the 5.4 – 5.9 Reassembly instructions!

REMOVAL

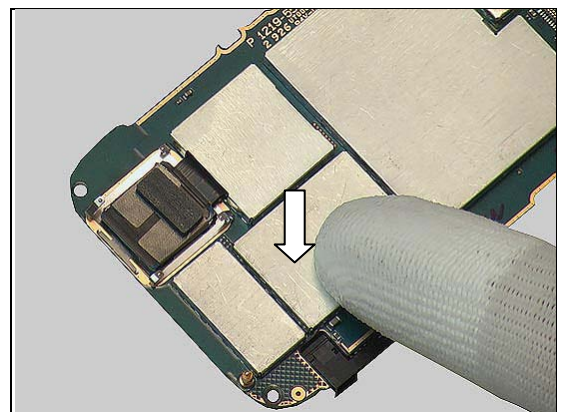
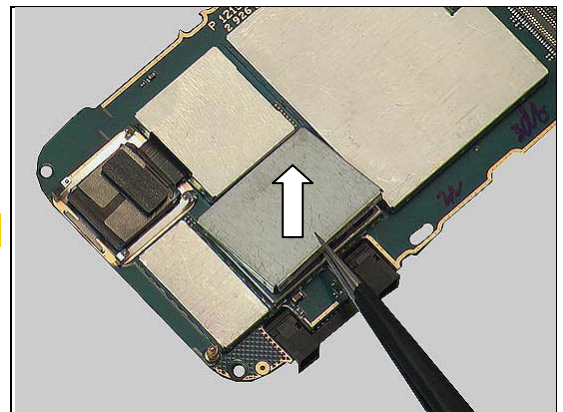
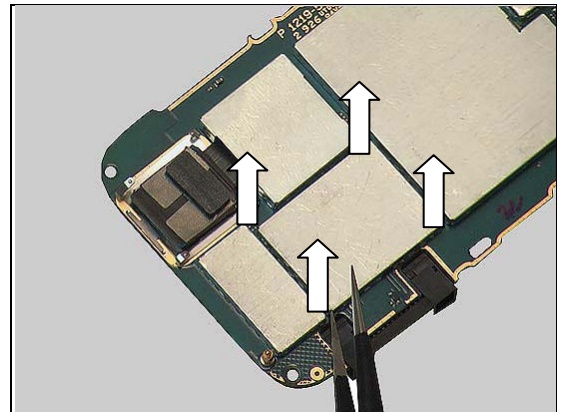
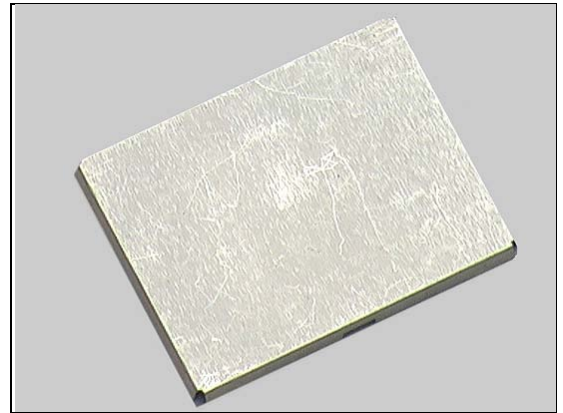
Insert the tweezers into the corners of the Shield Can Lid BB2 and pull upwards to release it,

and remove it.

Scrap! Not to be reused!

INSTALLATION

Place the new Shield Can Lid BB2 on top of the Shield fence and press gently until it is securely attached.



Replacement

4.41 Shield Can Lid GPS

Follow the 3.1 – 3.6 Disassembly instructions!
 Carry out the replacement as described below.
Follow the 5.4 – 5.9 Reassembly instructions!

REMOVAL

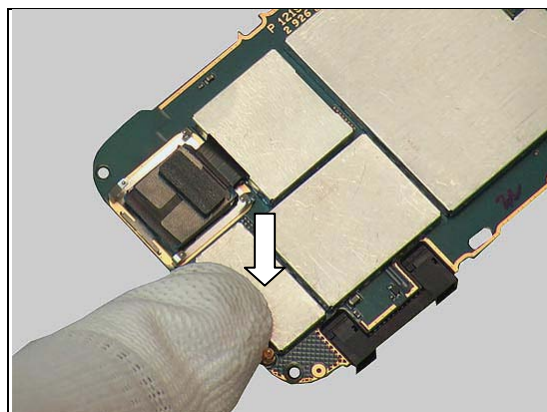
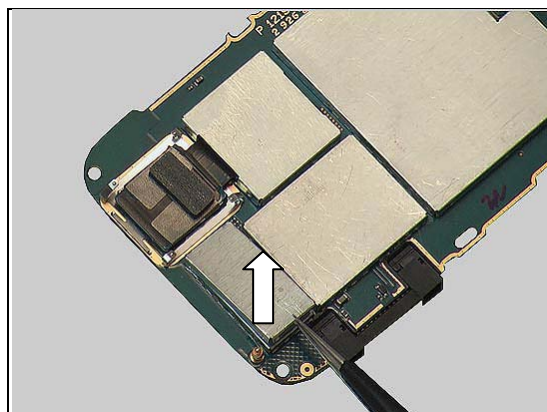
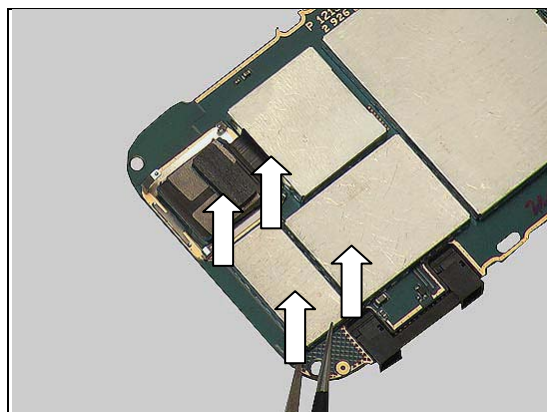
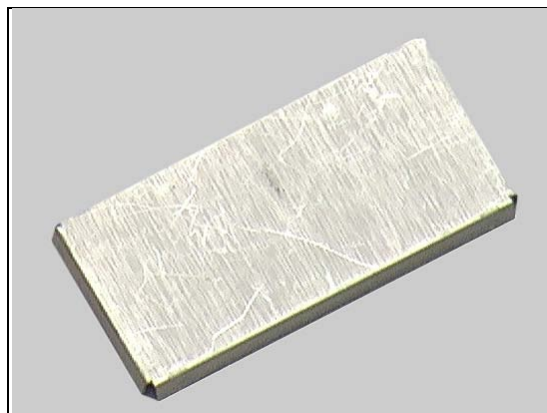
Insert the tweezers into the corners of the Shield Can Lid GPS and pull upwards to release it,

and remove it.

Scrap! Not to be reused!

INSTALLATION

Place the new Shield Can Lid GPS on top of the Shield fence and press gently until it is securely attached.





Replacement

4.42 Shield Can Lid ISP

Follow the 3.1 – 3.6 Disassembly instructions!
Carry out the replacement as described below.
Follow the 5.4 – 5.9 Reassembly instructions!

REMOVAL

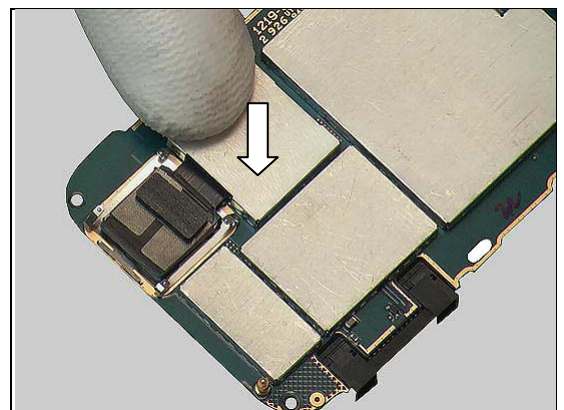
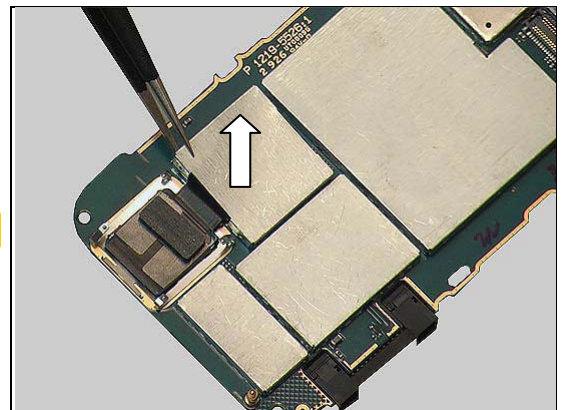
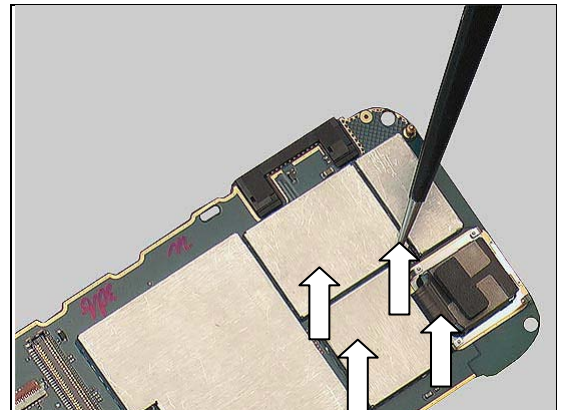
Insert the tweezers into the corners of the Shield Can Lid ISP and pull upwards to release it,

and remove it.

Scrap! Not to be reused!

INSTALLATION

Place the new Shield Can Lid ISP on top of the Shield fence and press gently until it is securely attached.





Replacement

4.43 Tape Protection HtH

Follow the 3.1 – 3.9 Disassembly instructions!
Carry out the replacement as described below.
Follow the 5.1– 5.9 Reassembly instructions!

REMOVAL

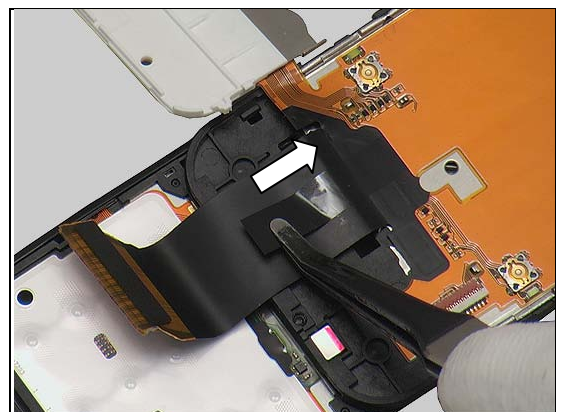
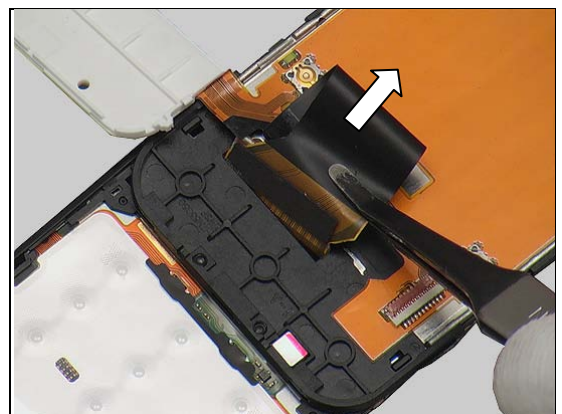
Gently use the Flex Film Assembly Tool to peel off the Foil HtH.

Scrap! Not to be reused!

Pull out the HtH-flex through the hole in the middle of the Hinge.

Gently use the Flex Film Assembly Tool to peel off the Tape Protection HtH.

Scrap! Not to be reused!

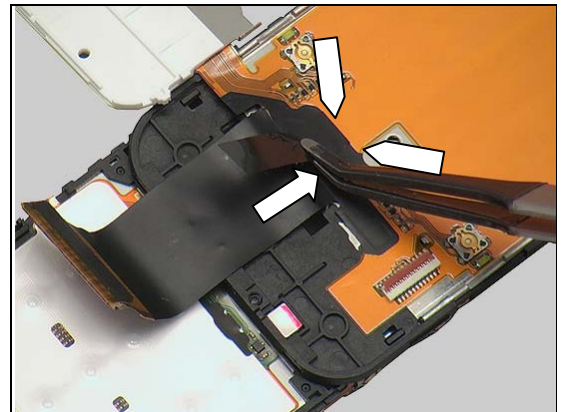




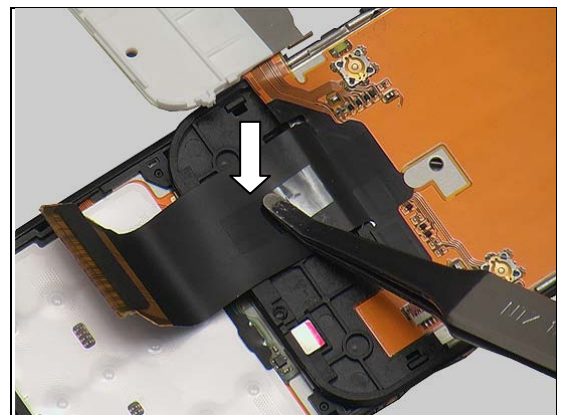
Replacement: Tape Protection HtH

INSTALLATION

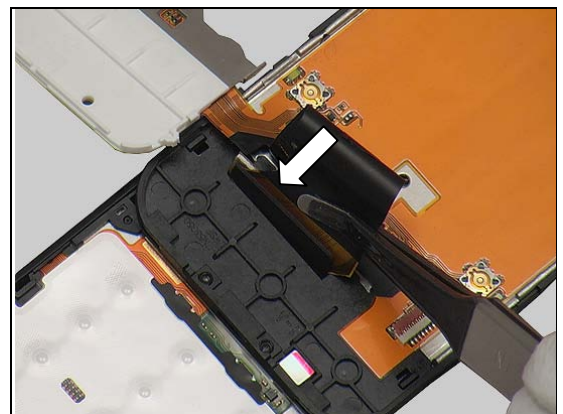
Use the Flex Film Assembly Tool to place the new Tape Protection HtH in the centre of the HtH-flex aligning with the shield edge.



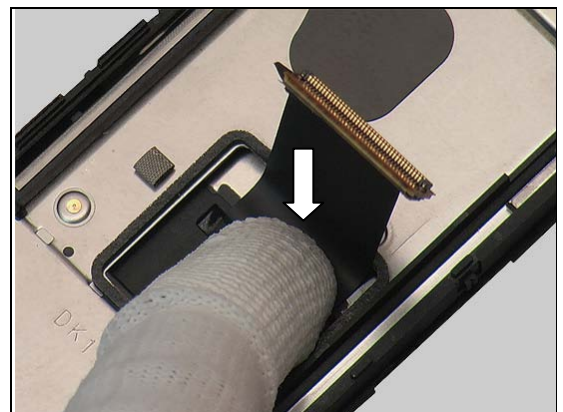
Press to make sure it is securely attached.



Thread the HtH-flex through the hole in the middle of the Hinge.

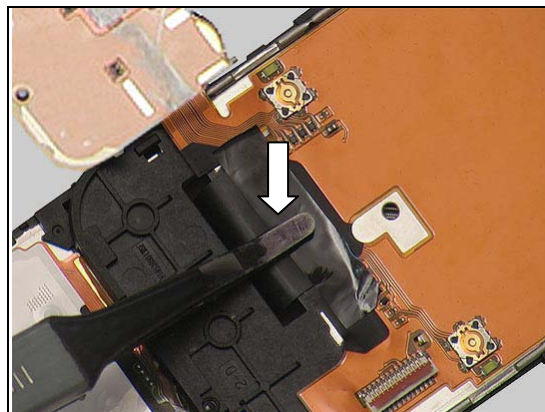


Align the HtH- flex between the marks on the Hinge and press firmly to attach the HtH-flex.



Replacement: Tape Protection HtH

Place the Foil HtH in its proper position and press to make sure it is securely attached.



Replacement

4.44 Water Indicator

INSPECTION

To check whether the Water Indicator has been activated (reddish colour), just remove the Battery Cover, Battery and the SIM card.

If activated:

Follow the 3.1 – 3.6 Disassembly instructions!

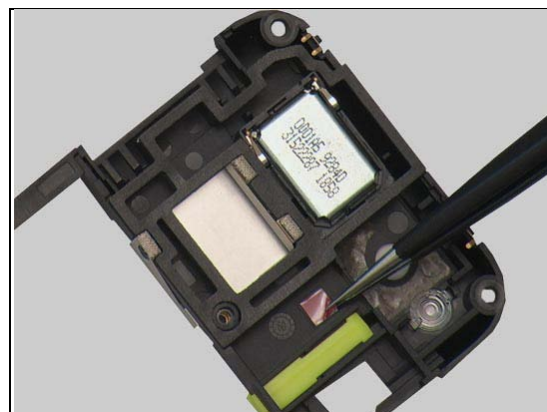
Carry out the replacement as described below.

Follow the 5.4– 5.9 Reassembly instructions!



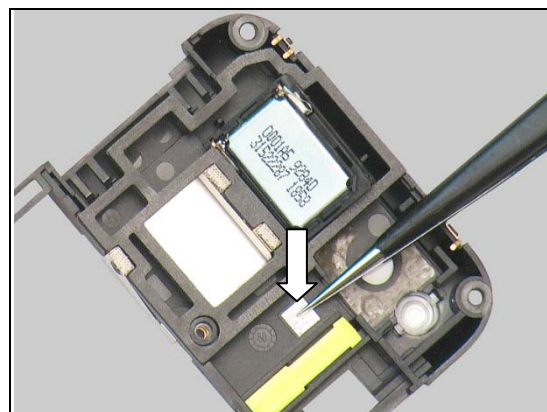
REMOVAL

Remove the activated Water Indicator with the tweezers.



INSTALLATION

Attach the new Water Indicator with the tweezers and fingers.





Replacement

4.45 Window Main Camera

Follow the 3.1 – 3.6 Disassembly instructions!
Carry out the replacement as described below.
Follow the 5.4– 5.9 Reassembly instructions!

REMOVAL

Push the Window Main Camera from the inside until it is released.

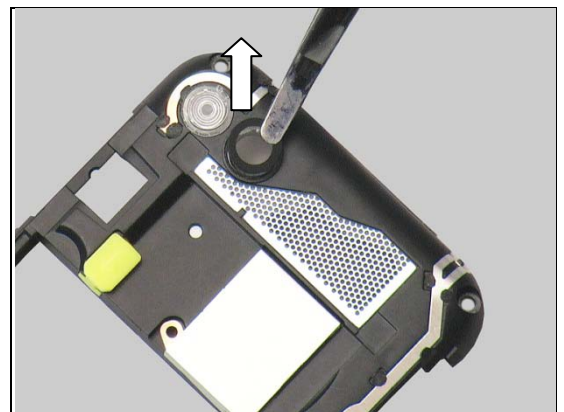
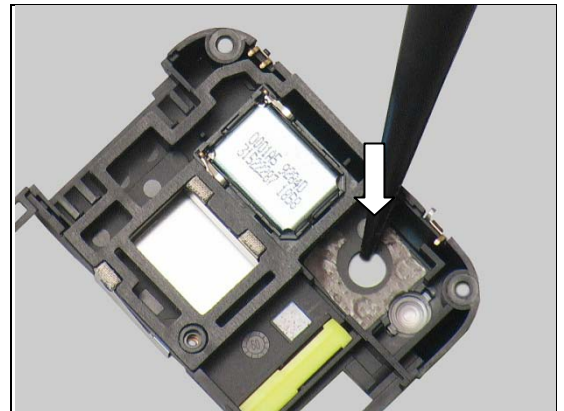
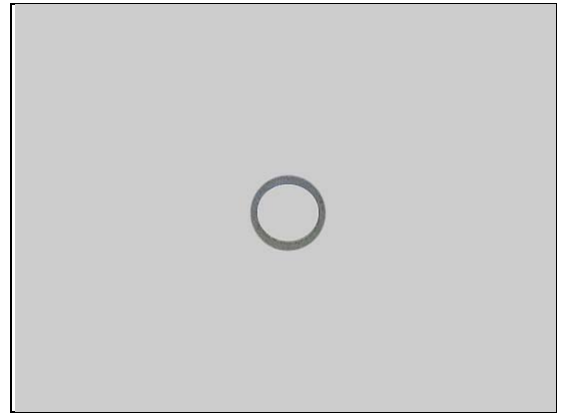
Carefully use the Flex Film Assembly Tool to remove the Window Main Camera from the Inner Frame.

INSTALLATION

Mount a new Adhesive Camera Window.
Attach a new Window Main Camera with the Flex Film Assembly Tool and fingers.

Make sure to remove all remains of the old Adhesive Camera Window before replacement!

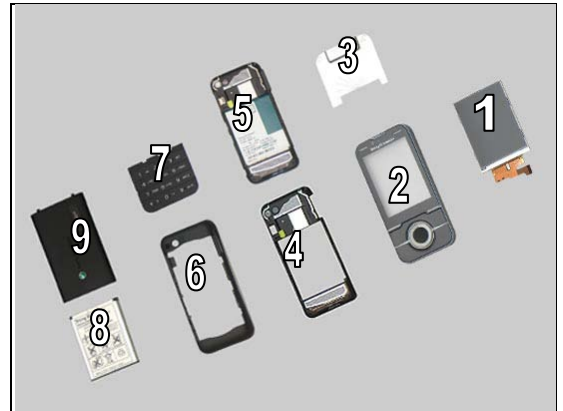
Use a new Adhesive Camera Window every time the Window Main Camera is removed!



5 Reassembly

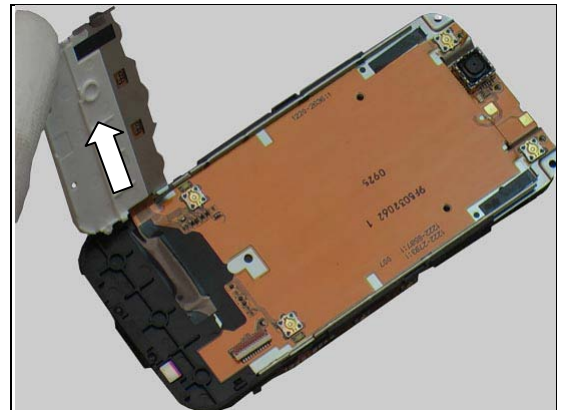
The reassembly is done in the following order:

1. Display
2. Front Cover
3. Deco Plate
4. Inner Frame
5. Inner Frame and Main PBA
6. Rear Cover
7. Keyboard Main
8. Battery
9. Battery Cover



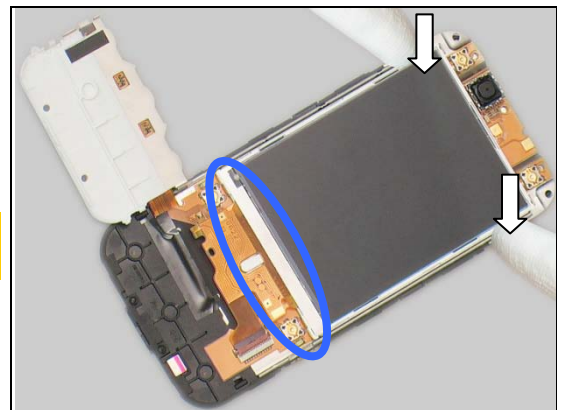
5.1 Display

Close the Hinge and raise the Navigation Support with fingers.

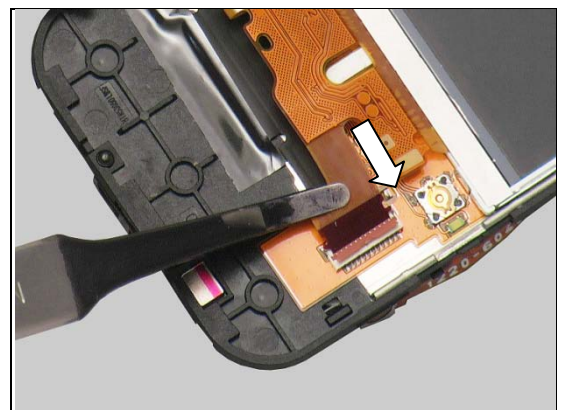


Place the Display in its proper position and press both sides to make sure it is securely attached to the Hinge.

Note! Do not make any pressure on the lower part of the Display!



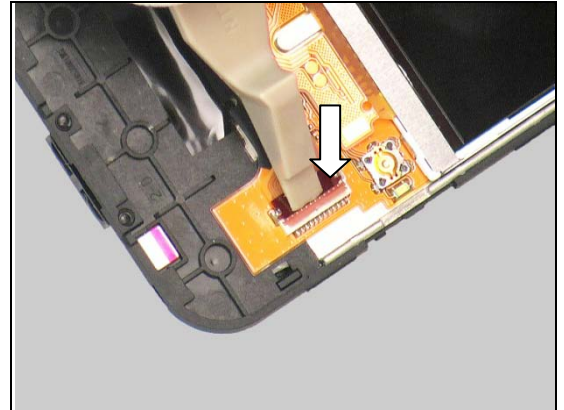
Use the Flex Film Assembly Tool to place the flex in the right position in the ZIF connector,





Reassembly

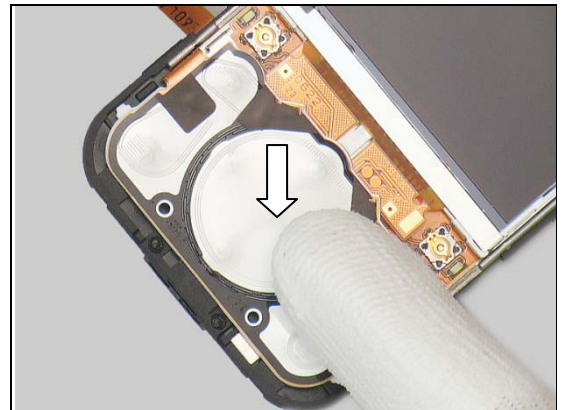
and close the connector with the Front Opening tool.



Insert the left side of the Navigation Support into its corresponding hook.



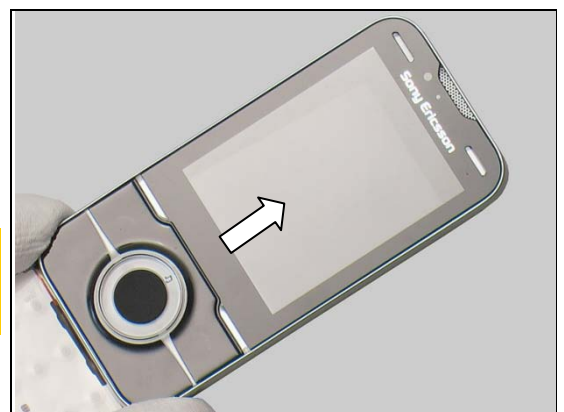
Insert the right side of the Navigation Support into its corresponding hook and press to make sure it is securely attached.



5.2 Front Cover

Place the Front Cover at the bottom of the Hinge and snap its three hooks.

***Inspect the gasket on the inside of the Front around the Main Window before the Front Cover is reassembled!
Replace the Front Cover if the gasket is damaged!***

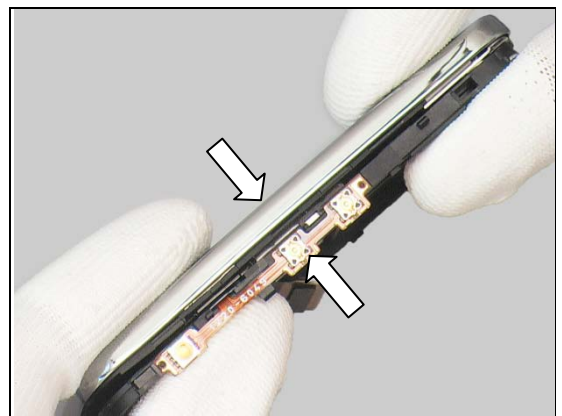


Reassembly

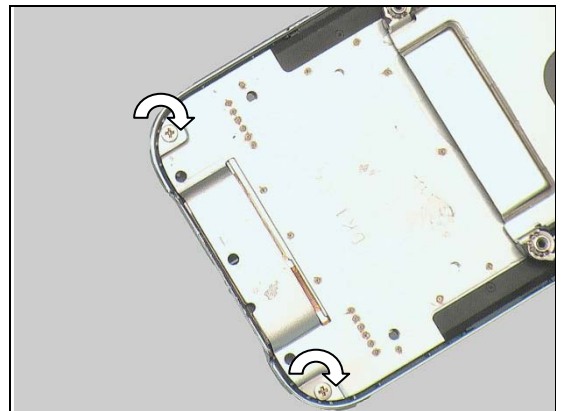
Press like this to snap this side of the Front Cover to the Hinge.



Do the same on the opposite side.

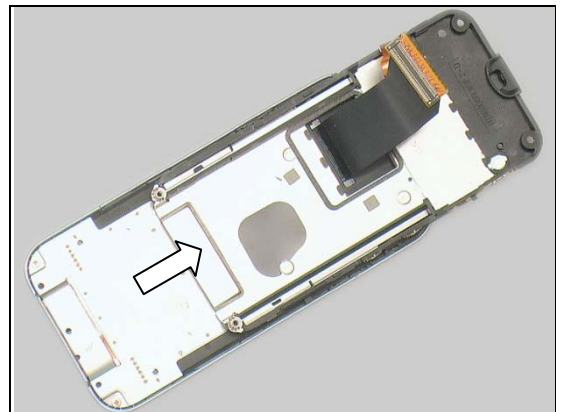


Apply 14 Ncm $\pm 10\%$ Ncm torque when tightening the Screw M1, 4 with the JCIS bit.



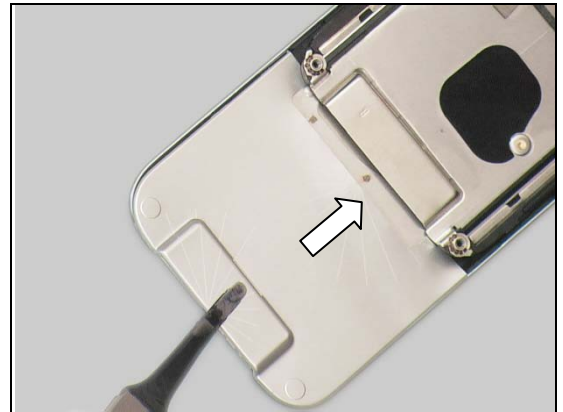
5.3 Deco Plate

Open the Hinge.

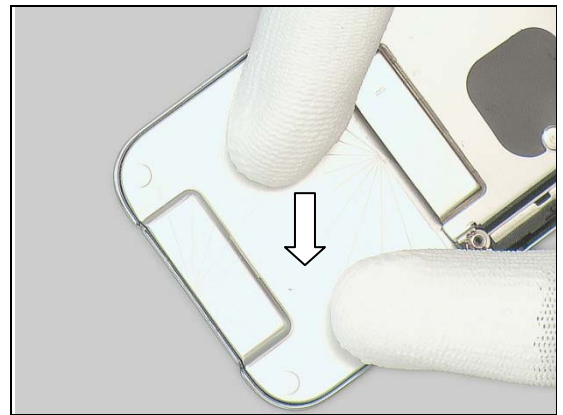


Reassembly

Place the new Deco Plate in the proper position by using the Flex Film Assembly Tool,



and press with fingers to make sure it is securely attached.



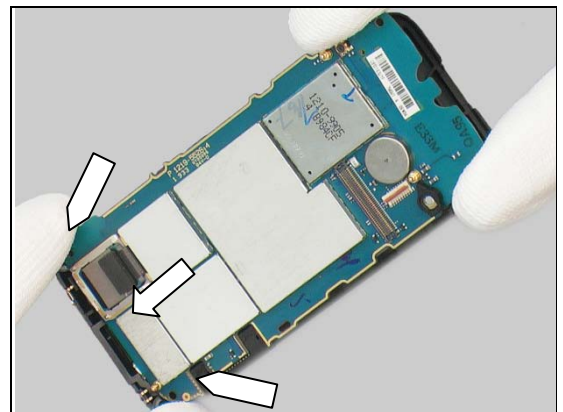
5.4 Inner Frame

Replace the Adhesive Camera – Inner Frame every time the Inner Frame is reassembled!

Make sure to remove all remains of the old Adhesive Camera – Inner Frame!



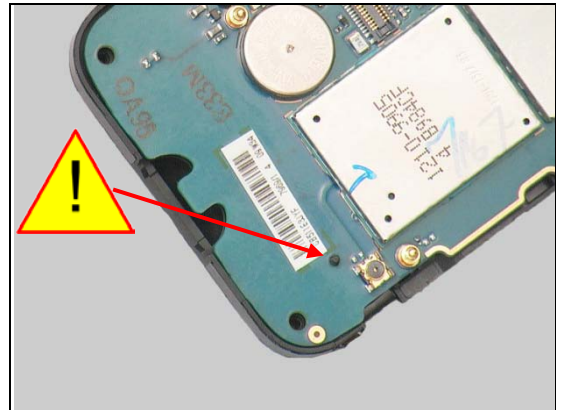
Hold the Main PBA in a slight angle and insert it at the top as indicated by the pointers and the arrow.





Reassembly

Use the guiding pin to locate the position as shown in the picture.

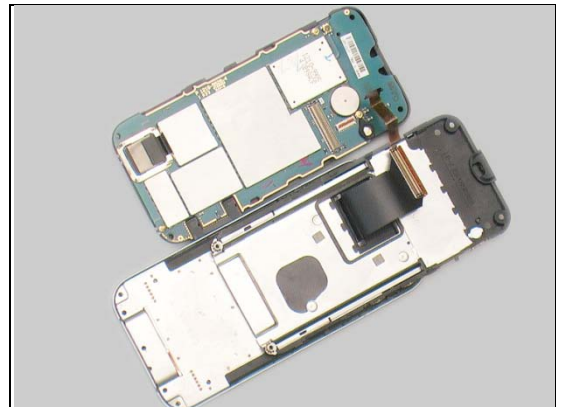


Apply 5 Ncm \pm 10% Ncm torque when tightening the Screw
Philips Len: 3.5 Diam: 1.2 with the JCIS bit.

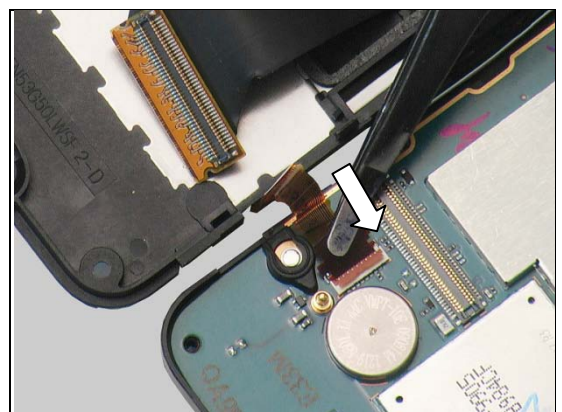


5.5 Inner Frame and Main PBA

Place the Inner Frame and Main PBA next to the Hinge as shown in the picture.

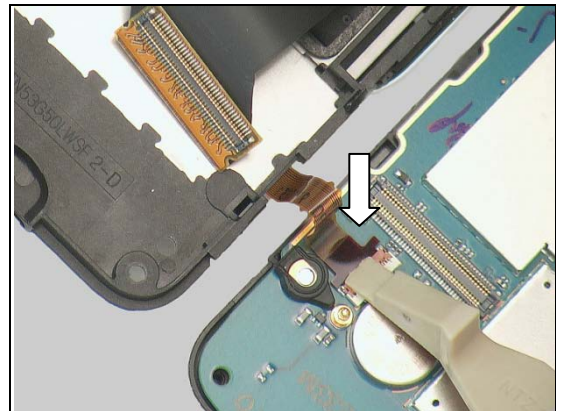


Use the Flex Film Assembly Tool to place the flex in the right position in the ZIF connector,

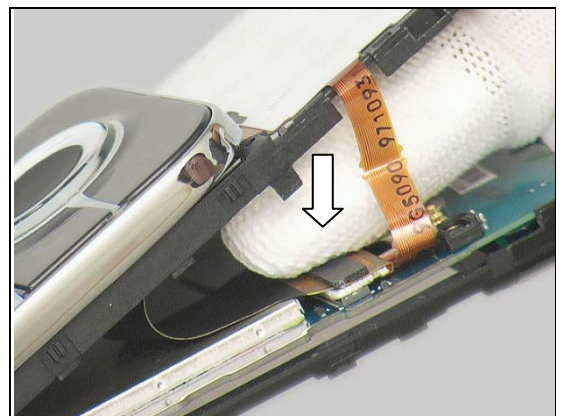


Reassembly

and close the connector with the Front Opening Tool.



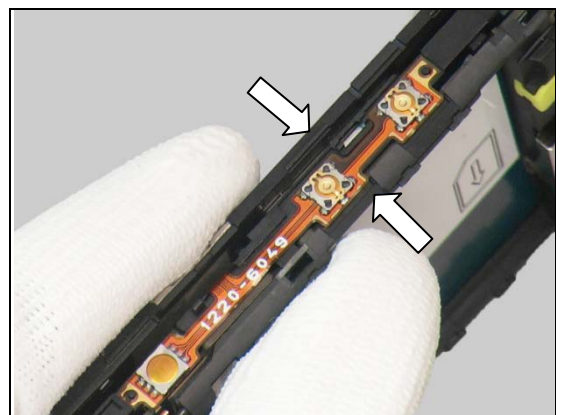
Connect the Board-to-Board (BtB) connector with fingers.



Hold the Inner Frame and Main PBA in a slight angle and insert it at the top as indicated by the pointers and the arrow to place them on the Hinge.

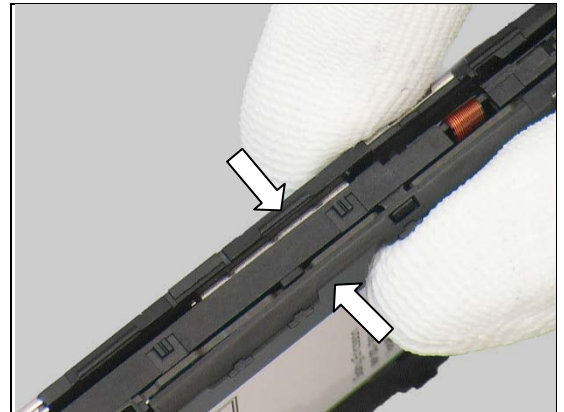


Press like this to snap the left side of the Inner Frame and Main PBA to the Hinge.



Reassembly

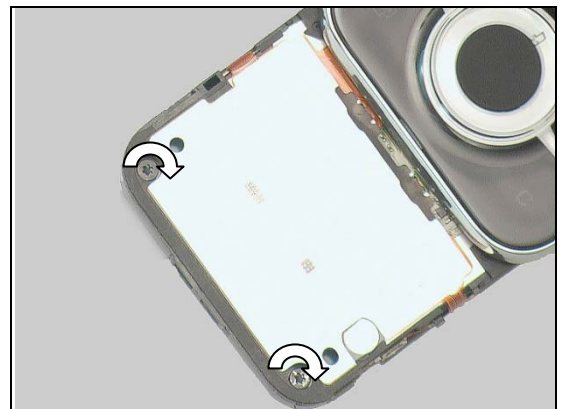
Press like this to snap the right side of the Inner Frame and Main PBA to the Hinge.



Apply 15 Ncm \pm 10% Ncm torque when tightening the Screw
Other Len: 5.0 Diam: 1.4 M with the JCIS bit.

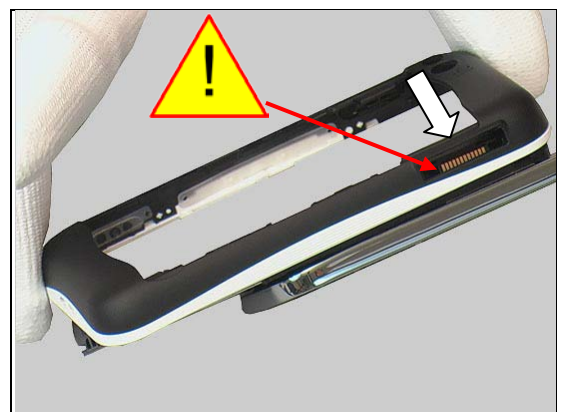


Apply 20 Ncm \pm 10% Ncm torque when tightening the Screw
Torx 5.0x1.6 by using the Torx Bit No. 5.



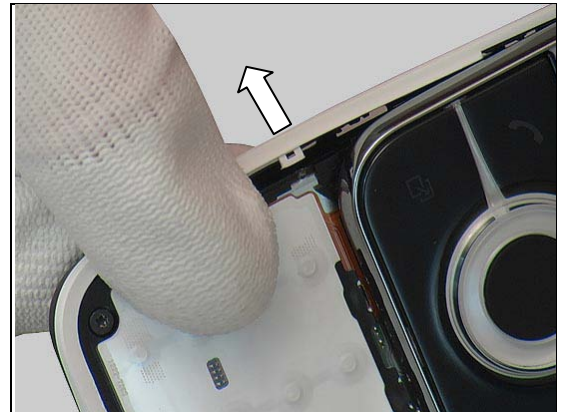
5.6 Rear Cover

Place the Rear Cover on the Inner Frame starting in the corner with the system connector.

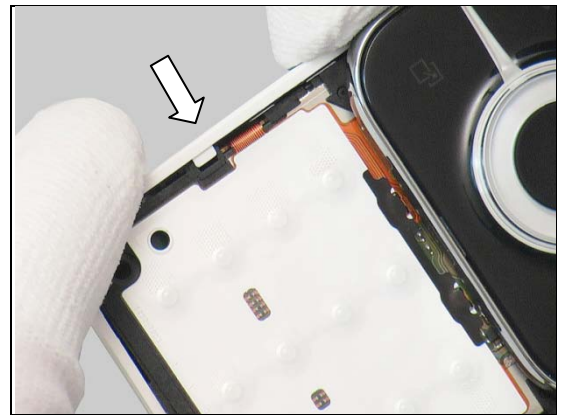


Reassembly

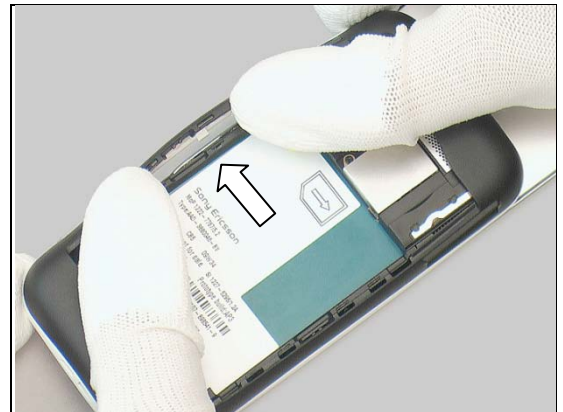
Lift up the hook in the right position by holding the Rear Cover in a slight angle,



and press to snap it.



Gently push the right side of the Rear Cover and snap the hooks in the middle.



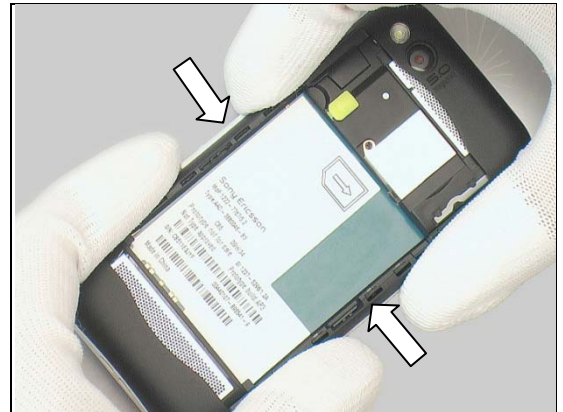
Press the bottom on the right side to snap the hooks to the Hinge,





Reassembly

Finally press on both sides especially around the Key Volume to snap the eight hooks on the back of the Rear Cover.



5.7 Keyboard Main

Use the Flex Film Assembly Tool to place the new Keyboard Main in its proper position.

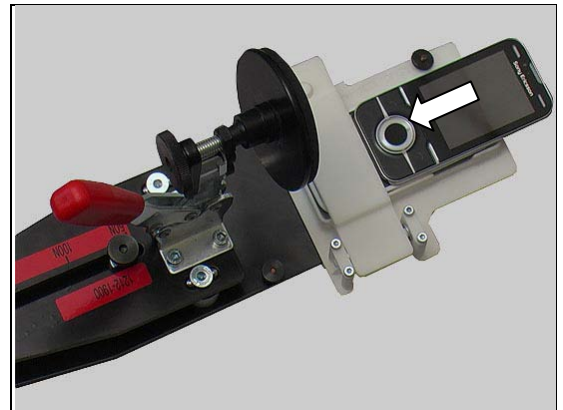
Make sure to remove all remains of the old Keyboard's Adhesive before replacement!

Use a new Keyboard Main!

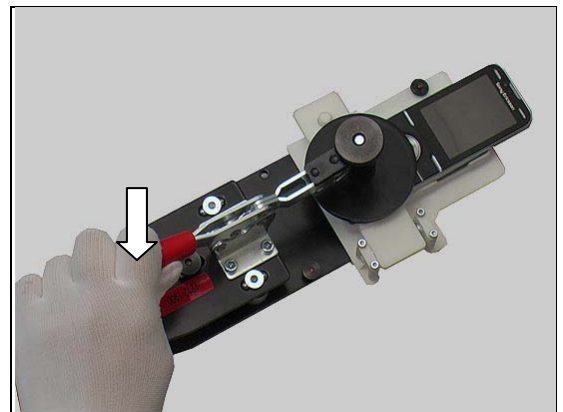
Note! There are two protection tapes that shall be removed from the new Keyboard Main before replacement!



Place the Slider on the insert located on the Pressure Tool and make sure the Slider is adjusted in the right position after the lid of the insert is closed.



Carefully press the handle with 60 N for 5 ± 1 seconds to attach the new Keyboard Main.



Reassembly

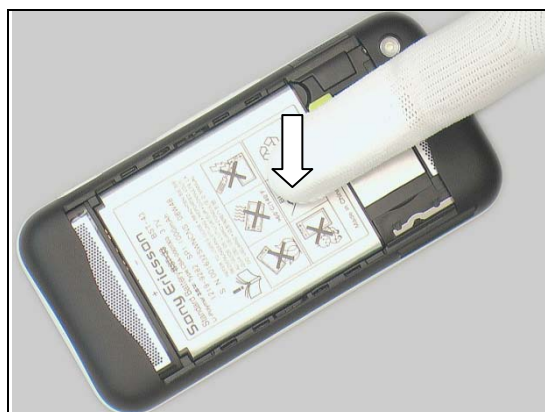
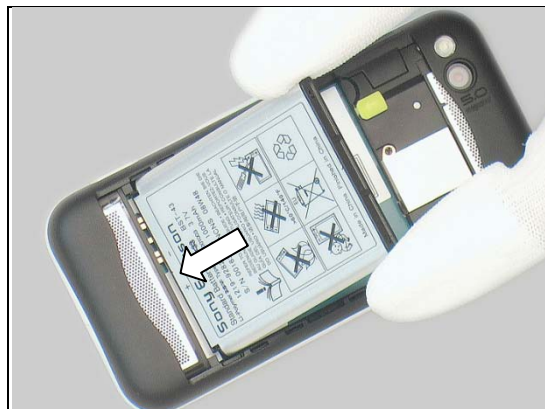
5.8 Battery

Close the Hinge.

Push the yellow hook for the SIM card as shown in the picture,

and insert the Battery at the top as shown in the picture.

Press on the battery to secure its position.



Reassembly

5.9 Battery Cover

Hold the Battery Cover in a 45° angle and insert the two hooks of the Battery Cover into the sockets of the Rear Cover.



Close the Battery Cover and press with fingers to make sure it is securely attached.





6 Revision History

| Rev. | Date | Changes / Comments |
|------|--------------|--|
| 1 | 2009-Sept-25 | Initial release |
| 2 | 2009-Oct-05 | Commercial names added on front page. |
| 3 | 2009-Nov-26 | Improved instruction for the FPC Slider Navigation |
| 4 | 2010-Jan-04 | Added instruction for the Protection Tape HtH |