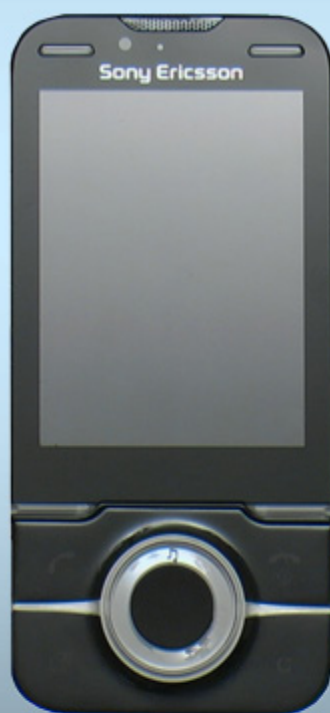




Troubleshooting Guide

- mechanical -



Yari
U100a, U100i



CONTENTS

1	Problem Areas	4
1.1	Power	4
1.1.1	Cannot power on or switch off randomly	4
1.2	Display	6
1.2.1	Graphics & Illumination	6
1.3	Key Illumination	8
1.3.1	Navigation Keypad Illumination	8
1.4	Keys	9
1.4.1	Keyboard Main	9
1.4.2	Navigation keys	10
1.4.3	Side keys	11
1.4.4	Left and Right and A/B keys	12
1.5	Audio	13
1.5.1	Microphone	13
1.5.2	Ear Speaker	13
1.5.3	Loudspeakers	14
1.6	Vibrator	16
1.6.1	Vibrator not generating alerts	16
1.7	Camera	17
1.7.1	Main Camera defects	17
1.7.2	Camera QCIF defects	18
1.8	Flash LED	19
1.8.1	Flash LED not flashing	19
1.9	Hinge	20
1.9.1	Hinge stiff, stuck or broken	20
1.10	Accelerometer	21
1.10.1	Accelerometer test fails	21
1.11	Memory Card	22
1.11.1	Memory Card not detected	22
1.11.2	Memory Card is stuck in the holder	22
1.12	FM Radio	23
1.12.1	No/Poor FM Radio reception	23
1.13	Real Time Clock	24
1.13.1	Real Time Clock test fails	24
1.14	SIM	25
1.14.1	SIM not detected	25
1.14.2	Incorrect SIM indicated	25
1.15	Charging	26
1.15.1	Battery will not charge	26
1.16	Bluetooth	27
1.16.1	Bluetooth connection failure	27



1.17 GPS	28
1.17.1 GPS malfunctions.....	28
1.18 Network & Signal.....	29
1.18.1 No/Poor signal	29
1.19 Hands Free by Wire.....	30
1.19.1 Connection to Portable Hands Free fails.....	30
1.20 Data Communication	31
1.20.1 Data transfer via System Connector fails.....	31
2 Revision History	32

1 Problem Areas

1.1 Power

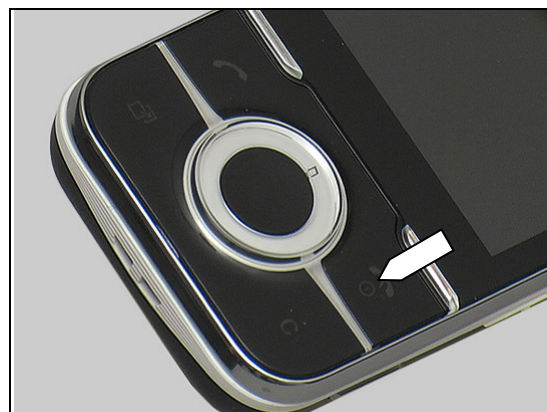
1.1.1 Cannot power on or switch off randomly

Check:

Check whether the phone vibrates and the Navigation Keypad illuminates after the power key is depressed.

Action:

If activation of the Vibrator and Navigation Keypad illumination is detected, refer to section 1.2 'Display'.

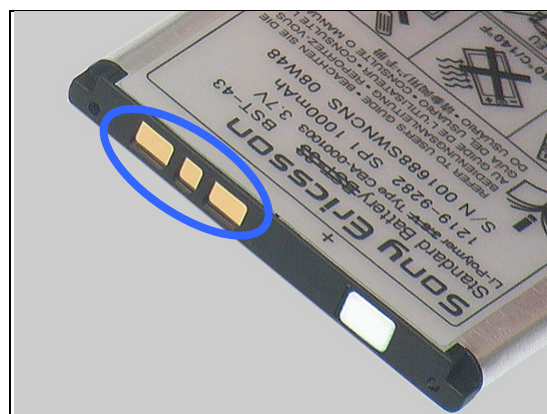


Check:

Inspect the contact pads on the Battery.

Action:

1. If dirty or oxidized – clean the pads.
2. If damaged – replace the Battery.

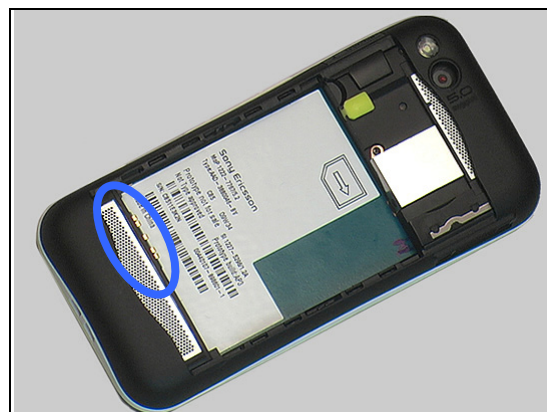


Check:

Inspect the Battery Connector.

Action:

1. If dirty or oxidized – clean the connector.
2. If damaged – send to higher level of repair.



Check:

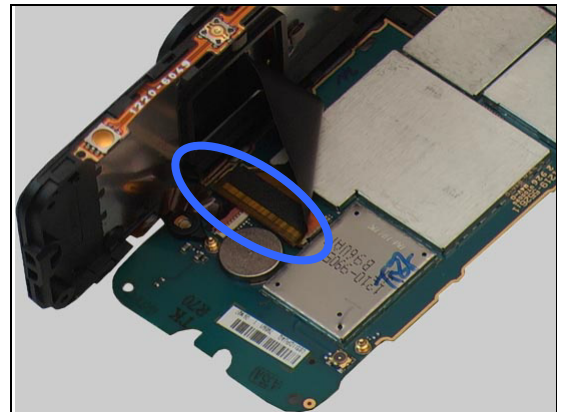
1. The Navigation Keypad in the Front Cover.





Problem Areas

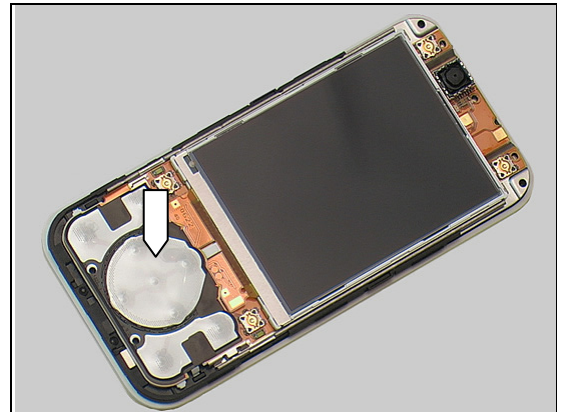
2. The connection between FPC Slider-Navigation and Main PBA.



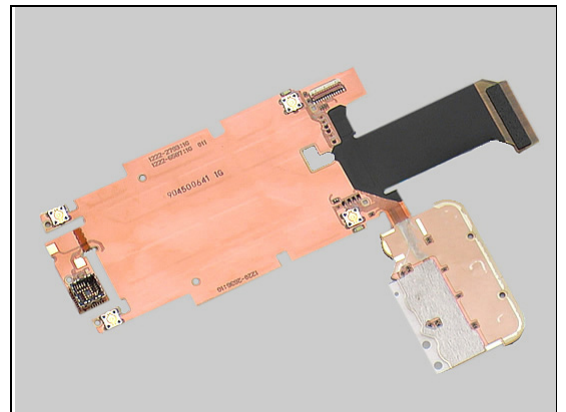
3. The Dome Sheet and the flex to the Main PBA on the FPC Slider-Navigation.

Action:

1. If the Navigation Keypad is damaged – replace the Front Cover.
2. If not properly connected – disconnect and reconnect it.



3. If the Dome Sheet or the flex to the Main PBA is damaged – replace the FPC Slider-Navigation
4. Send to higher level of repair.



Problem Areas

1.2 Display

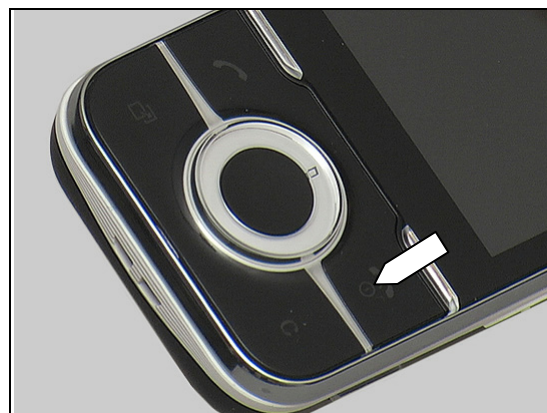
1.2.1 Graphics & Illumination

Check:

Check whether the phone vibrates and the Navigation Keypad illuminates after the power key has been pressed.

Action:

If the activation described above is not detected, refer to section 1.1 'Power'.



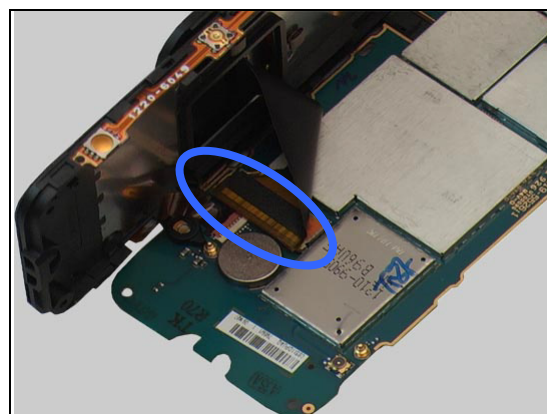
Check:

1. Check the ZIF connection between the FPC Slider-Navigation and the Display 2.41 TFT.
2. Check the connection between the FPC Slider-Navigation and the Main PBA.



Action:

1. If not properly connected – disconnect and reconnect them.
2. If dirty or oxidized – clean both sides of the connectors.

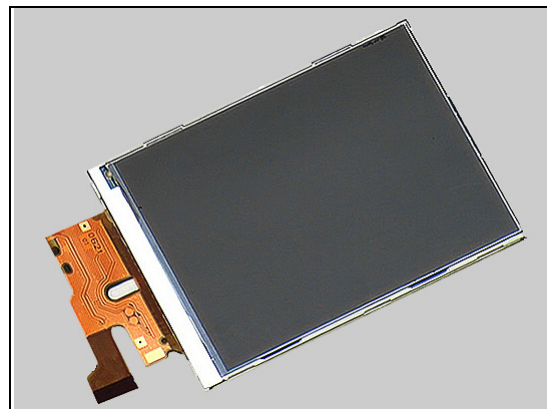


Check:

3. Check the Display 2.41 TFT.

Action:

3. If the Display 2.41 TFT is damaged – replace it.





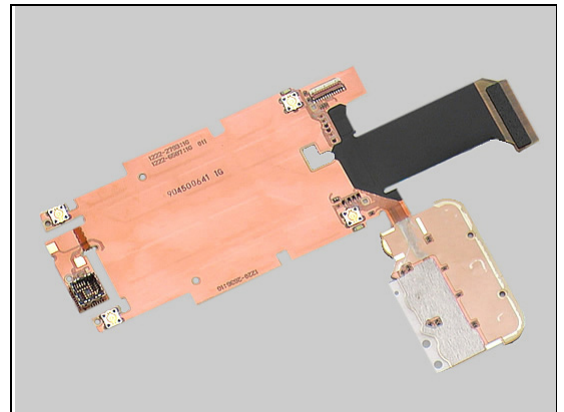
Problem Areas

Check:

4. The flex to the Main PBA on the FPC Slider-Navigation.
And check that there are no air bubbles or adhesive remains under the FPC Slider-Navigation.

Action:

4. If the FPC Slider-Navigation is damaged or if the surface is not absolutely flat – replace the FPC Slider-Navigation.
5. Send to higher level of repair.





Problem Areas

1.3 Key Illumination

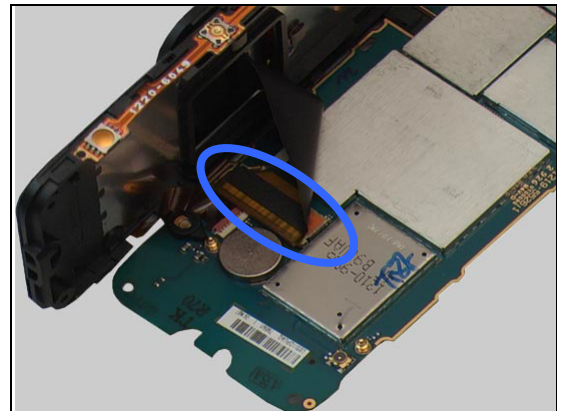
1.3.1 Navigation Keypad Illumination

Check:

1. The Navigation Keypad in the Front Cover.



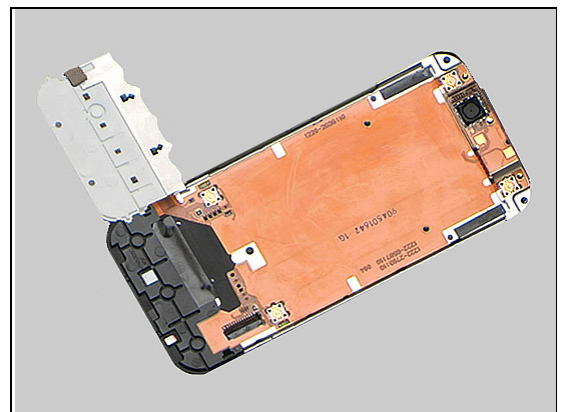
2. The connection between FPC Slider-Navigation and Main PBA.



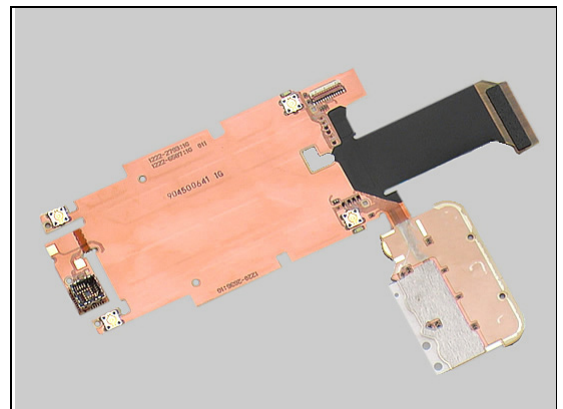
3. The FPC Slider-Navigation.

Action:

1. If the Navigation Keypad is damaged – replace the Front Cover.
2. If not properly connected – disconnect and reconnect it.



3. If the FPC Slider-Navigation is damaged – replace it.
4. Send to higher level of repair.



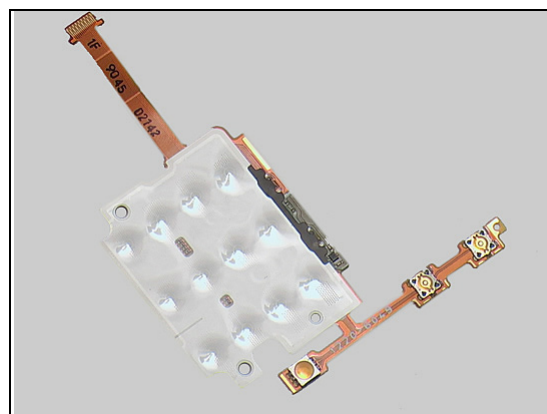
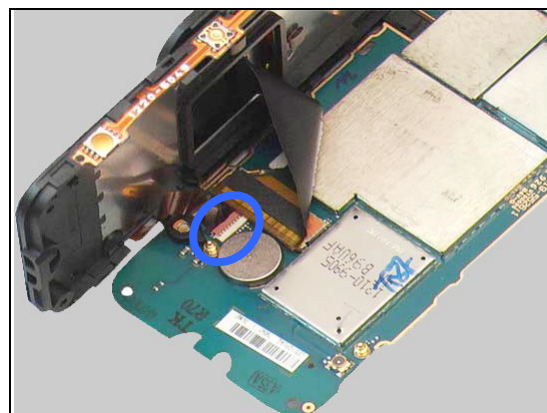
Problem Areas

1.4 Keys

1.4.1 Keyboard Main

Action:

1. If not properly connected – disconnect and reconnect the ZIF.
2. If dirty or oxidized – clean the connector.



3. Replace the FPC Keyboard Main.
4. Send to higher level of repair.



Problem Areas

1.4.2 Navigation keys

Check:

1. The Navigation Keypad (a) in the Front Cover.

Action:

1. If the Navigation Keypad is damaged – replace the Front Cover.

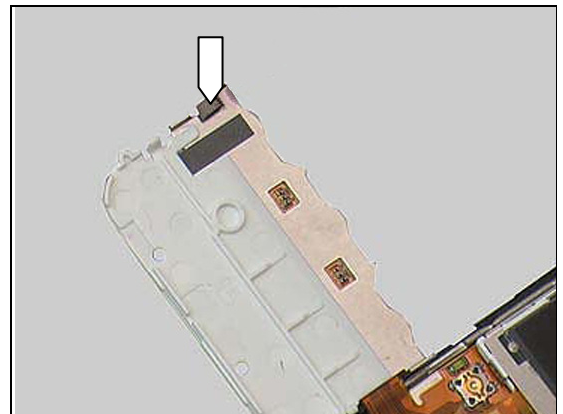


Check:

2. The connection between FPC Slider-Navigation and Main PBA.
3. That the Cushion Grounding Navigation is properly mounted.

Action:

2. If not properly connected – disconnect and reconnect.
3. If not properly mounted – replace the Cushion Grounding Navigation.

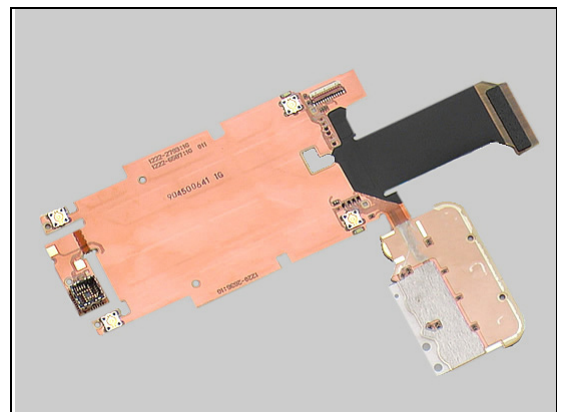


Check:

4. The Dome Sheet and the flex to the Main PBA on the FPC Slider-Navigation.

Action:

4. If the Dome Sheet or the flex to the Main PBA is damaged – replace the FPC Slider-Navigation.
5. Send to higher level of repair.





Problem Areas: Keys

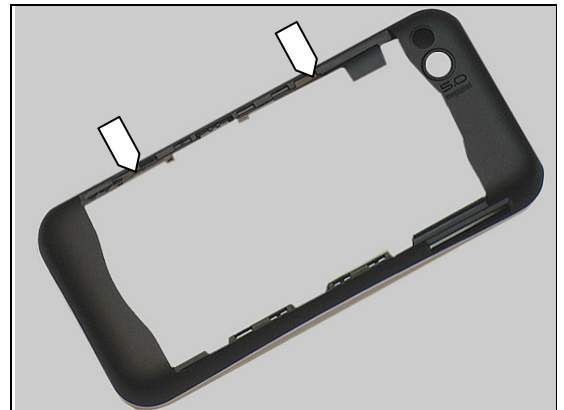
1.4.3 Side keys

Check:

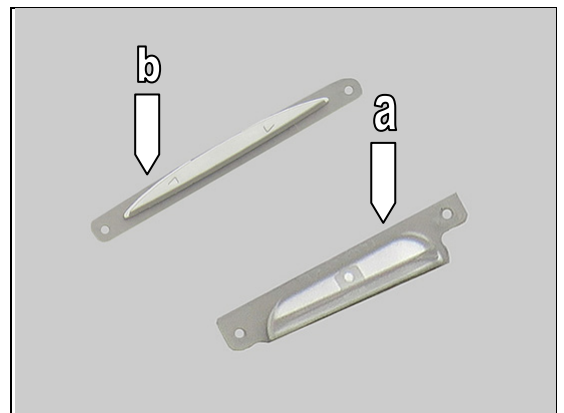
Inspect the key causing the fault.

Action:

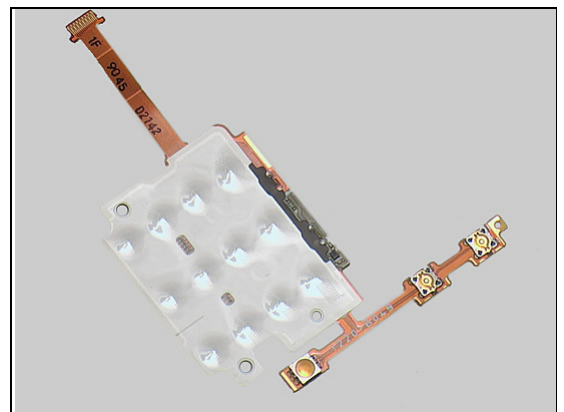
1. If dirty or clogged – clean it.
2. Reinstall the Rear Cover and ensure both the Key Volume and the Key Camera are properly located in relation to the keys switches on the FPC Keyboard Main.



3. If the Key Camera (a) or the Key Volume (b) are damaged – replace the Key Camera or the Key Volume.



4. Replace the FPC Keyboard Main.
5. Send to higher level of repair.



Problem Areas: Keys

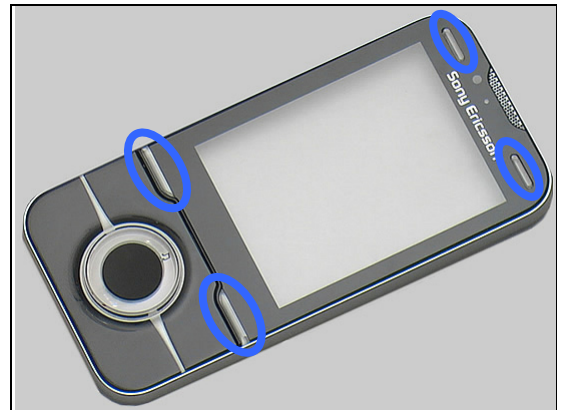
1.4.4 Left and Right and A/B keys

Check:

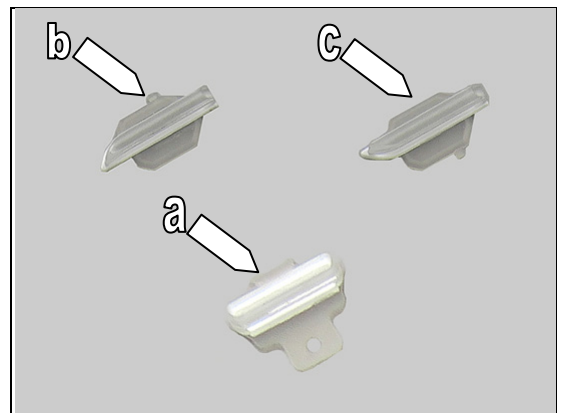
1. Inspect the key causing the fault.

Action:

1. If dirty or clogged – clean it.
2. Reinstall the Front Cover and ensure the Key A/B and the Key Left and the Key Right are properly located in relation to the keys switches on the FPC Slider-Navigation.



3. If the Key A/B (a) or the Key Left (b) or the Key Right (c) are damaged – replace the Key A/B or the Key Left or the Key Right.

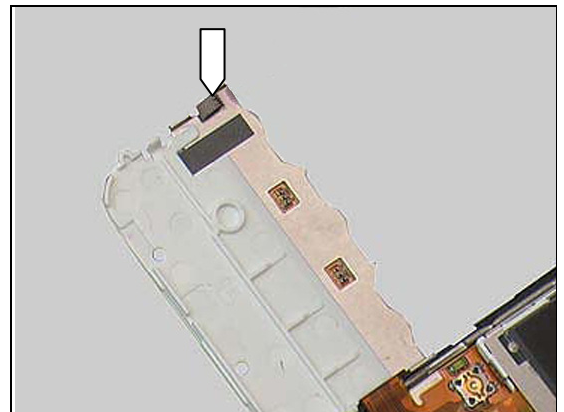


Check:

2. The connection between FPC Slider-Navigation and Main PBA.
3. That the Cushion Grounding Navigation is properly mounted.

Action:

4. If not properly connected – disconnect and reconnect.
5. If not properly mounted – replace the Cushion Grounding Navigation.

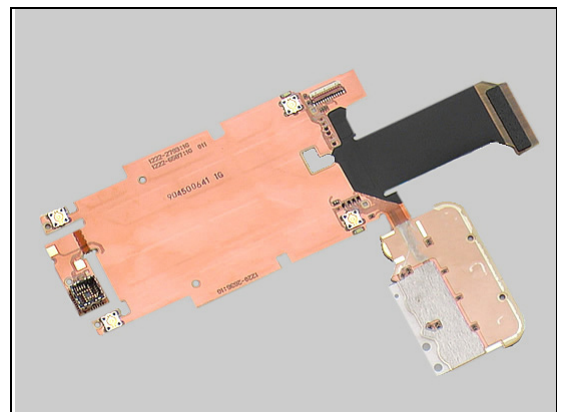


Check:

4. The Switches and the flex to the Main PBA on the FPC Slider-Navigation.

Action:

6. If the Switches or the flex to the Main PBA is damaged – replace the FPC Slider-Navigation.
7. Send to higher level of repair.





Problem Areas

1.5 Audio

1.5.1 Microphone

Check:

Inspect the Microphone's external port.

Action:

1. If clogged – clean the port.
2. Send to higher level of repair



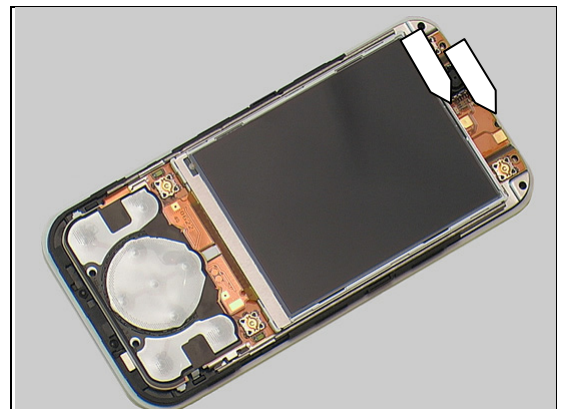
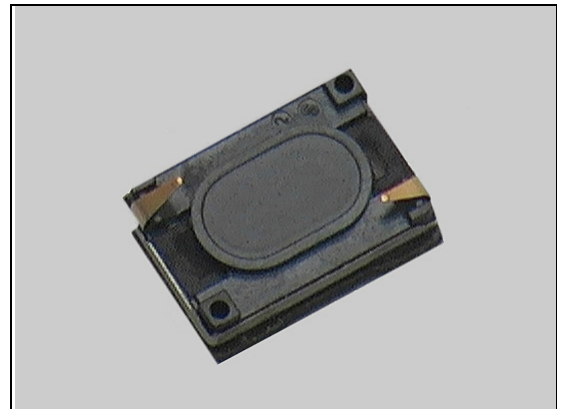
1.5.2 Ear Speaker

Check:

1. Inspect the Ear Speaker's external port.
2. Inspect the Ear Speaker.
3. Inspect the Ear Speaker pads on the FPC Slider-Navigation.

Action:

1. If clogged – clean it or replace the Front Cover.
2. If dirty or oxidized – clean the Ear Speaker's pins.
3. If damaged – replace the Ear Speaker.
4. If dirty or oxidized – clean the Ear Speaker pads on the FPC Slider-Navigation.
5. Replace the FPC Slider-Navigation.
6. Send to higher level of repair.





Problem Areas: Audio

1.5.3 Loudspeakers

Check:

1. Inspect the Loudspeakers' external ports.
2. Inspect the speaker box gasket.

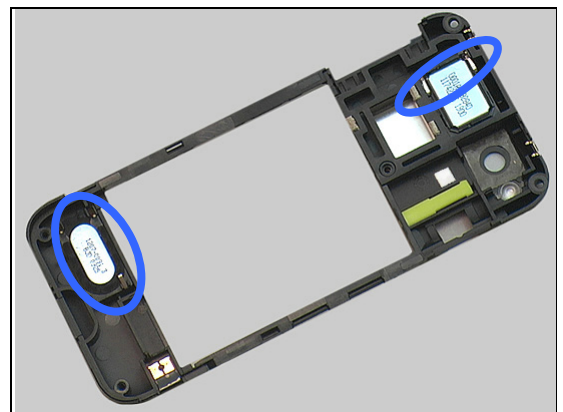
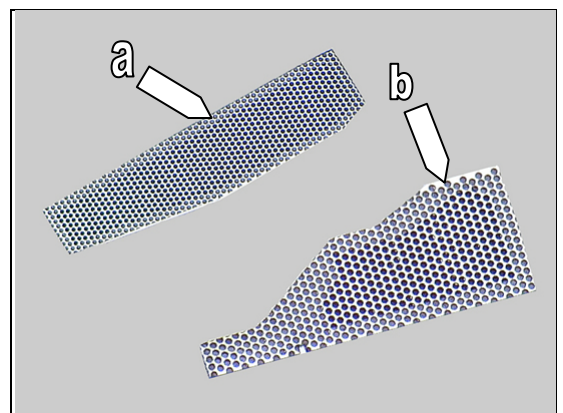
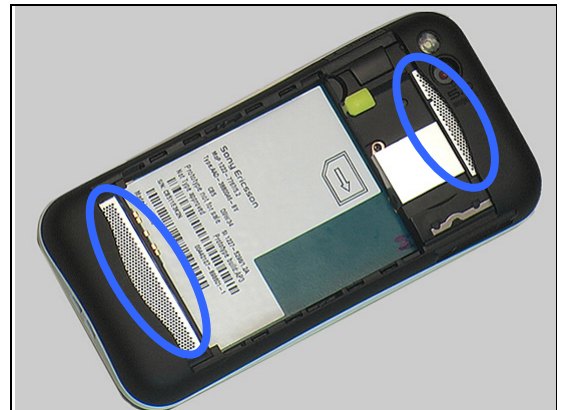
Action:

1. If clogged – replace the Net Speaker Bottom and the Net Speaker Top.
2. If the Net Speaker Bottom (a) or the Net Speaker Top (b) is damaged – replace the Net Speaker Bottom or the Net Speaker Top.

3. If the speaker box gasket is damaged – replace the Inner Frame.

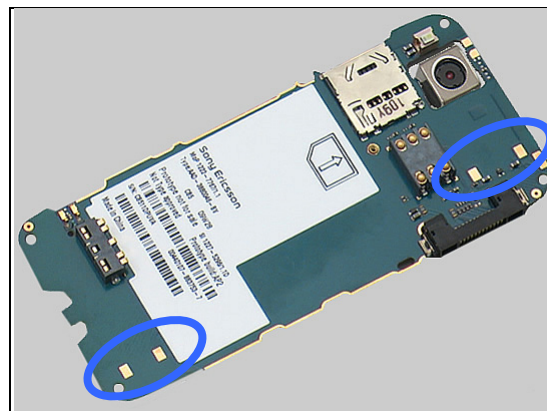
Check:

1. Inspect the pins for the Loudspeakers.



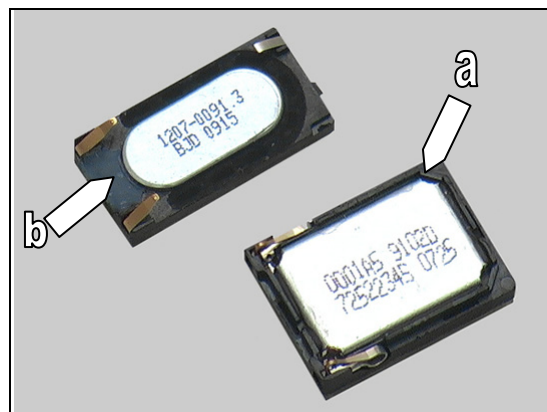
Problem Areas: Audio

2. Inspect the pads on the Main PBA for the Loudspeakers.



Action:

1. If the pins are oxidized – clean them.
2. If the Loudspeakers' pads are oxidized – clean them.
3. If the pins are bended or damaged – replace the Loudspeaker 11x15 (a) or the Loudspeaker 9x18 (b).
4. Send to higher level of repair.



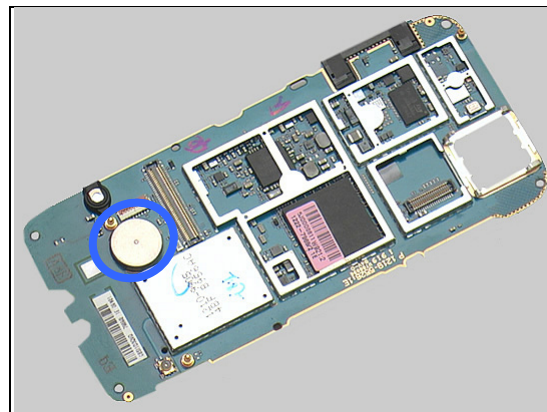
Problem Areas

1.6 Vibrator

1.6.1 Vibrator not generating alerts

Action:

Send to higher level of repair.



Problem Areas

1.7 Camera

1.7.1 Main Camera defects

Check:

Inspect the Window Main Camera.

Action:

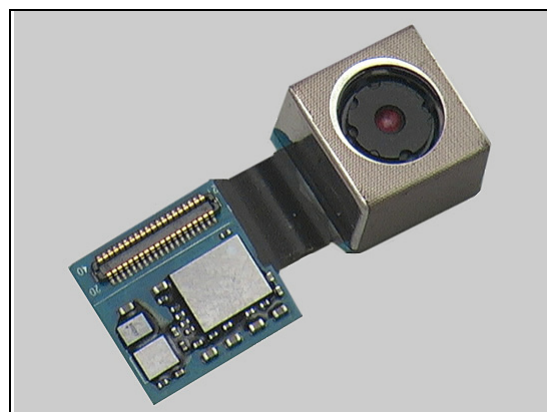
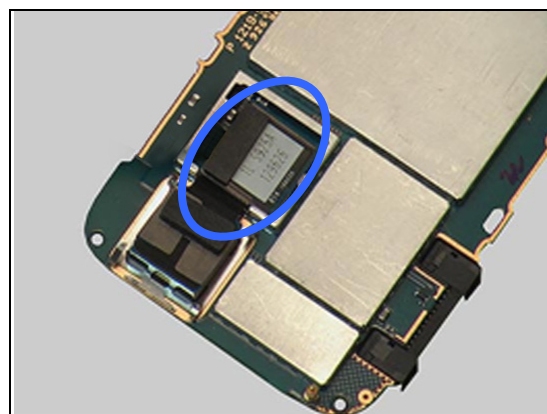
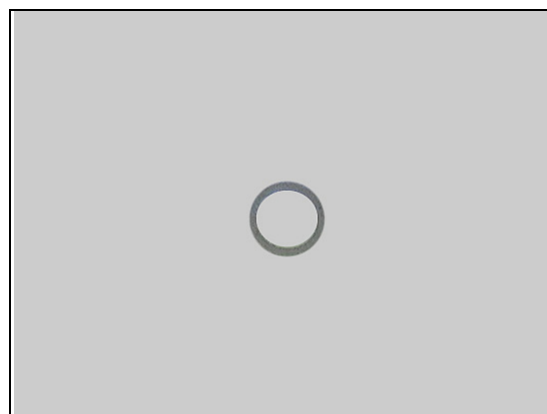
1. If dirty – clean the Window Main Camera.
2. If scratched or damaged – replace the Window Main Camera.

Check:

Inspect whether the Camera is properly connected to the Main PBA.

Action:

1. If not properly connected – disconnect and reconnect the BtB connector.
2. If the Camera is damaged – replace it.
3. Send to higher level of repair.





Problem Areas: Camera

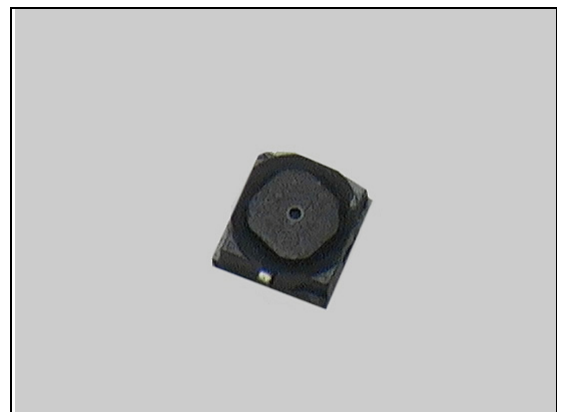
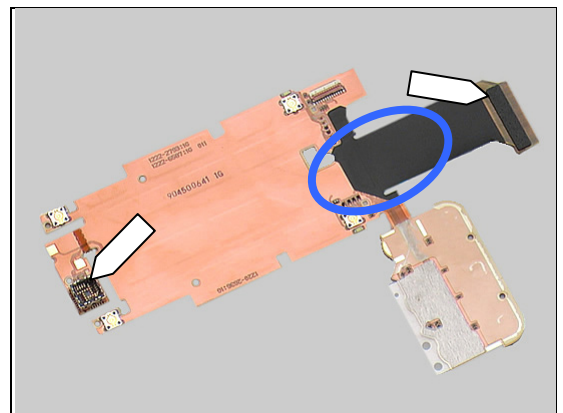
1.7.2 Camera QCIF defects

Check:

1. Inspect the window for the Camera QCIF.
2. Inspect the Tape Protection HtH.
3. Inspect the FPC Slider-Navigation.
4. Inspect the Camera QCIF.
5. Inspect the camera socket and the flex to the Main PBA.

Action:

1. If dirty – clean the window.
2. If the window is scratched or damaged – replace the Front Cover.
3. If the Tape Protection HtH is damaged – replace it.
4. If the Tape Protection HtH is missing – mount one.
5. If the flex to the Main PBA is damaged – replace the FPC Slider-Navigation.
6. Replace the Camera QCIF.
7. If the camera socket or the HtH on the FPC-Slider Navigation is damaged – replace the FPC-Slider Navigation.
8. Send to higher level of repair.



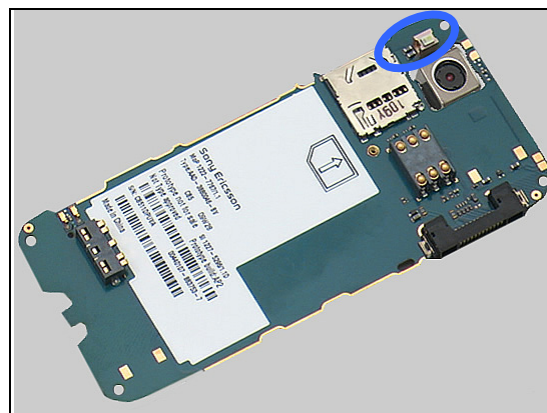
Problem Areas

1.8 Flash LED

1.8.1 Flash LED not flashing

Action:

Send to higher level of repair.



Problem Areas

1.9 Hinge

1.9.1 Hinge stiff, stuck or broken

Action:

Replace the Hinge.

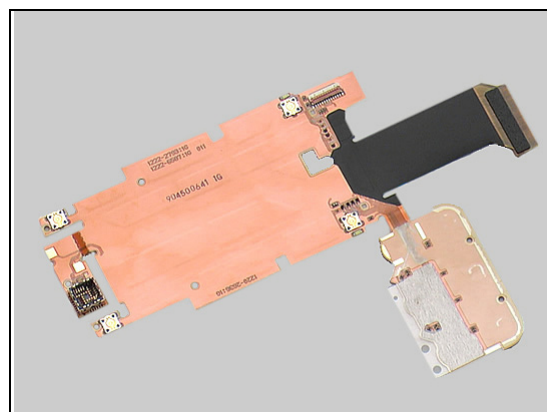
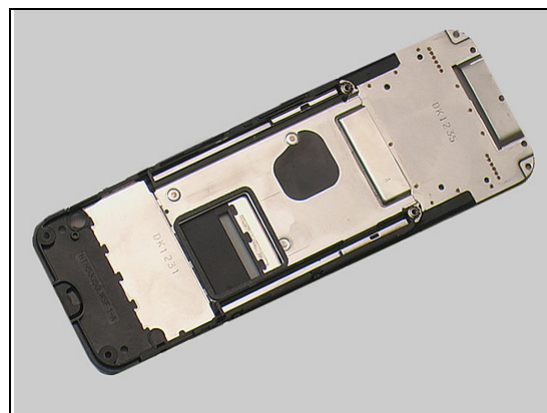
Check:

If there are any remains of adhesive from the FPC Slider-
Navigation on the Hinge that are **unfeasible to remove**.

Action:

Replace the Hinge.

The surface under the Display need to be absolutely flat,
no remains left or air bubbles.



Problem Areas

1.10 Accelerometer

1.10.1 Accelerometer test fails

Action:

Send to higher level of repair.



Problem Areas

1.11 Memory Card

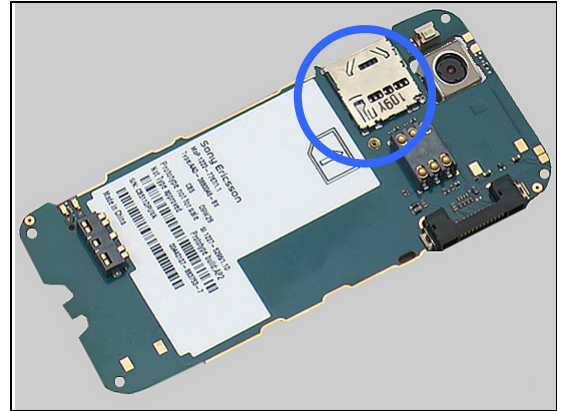
1.11.1 Memory Card not detected

Check:

Inspect the Memory Card holder.

Action:

1. Check if the Memory Card is properly inserted.
2. If any foreign objects or dirty can be seen in the holder – clean it.
3. Try the Push-Pull function of the Memory Card holder. If not working – send to higher level of repair.
4. Send to higher level of repair.



1.11.2 Memory Card is stuck in the holder

Action:

1. Gently pull the Memory Card out using a Flex Film Assembly tool.
2. Send to higher level of repair.



Problem Areas

1.12 FM Radio

1.12.1 No/Poor FM Radio reception

Check:

Inspect the System Connector.

Action:

1. If dirty or oxidized – clean the connector.
2. Send to higher level of repair.



Problem Areas

1.13 Real Time Clock

1.13.1 Real Time Clock test fails

Action:

Send to higher level of repair.

Problem Areas

1.14 SIM

1.14.1 SIM not detected

Check:

1. Inspect the yellow SIM Card lock.
2. Inspect the SIM connector.
3. Inspect if the Screw Philips Len:3.5 Diam:1.2 is properly mounted.

Action:

1. If the SIM Card lock is broken or missing – replace the Inner Frame.
2. If dirty or oxidized – clean the pins.
3. Tighten the Screw Philips Len:3.5 Diam:1.2

Check:

4. Inspect that the Cushion Grounding Inner Frame are properly mounted.

Action:

4. If any of the Cushion Grounding Inner Frame is missing or not properly mounted – replace them.
5. Send to higher level of repair.

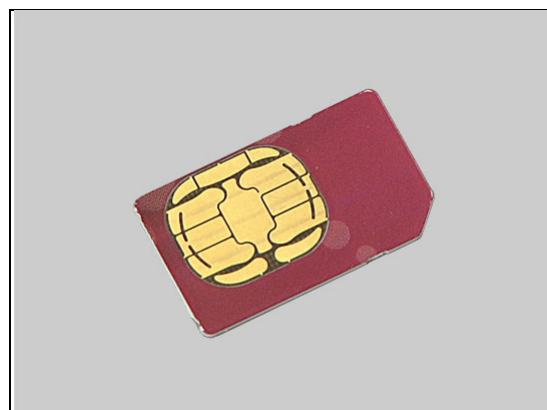
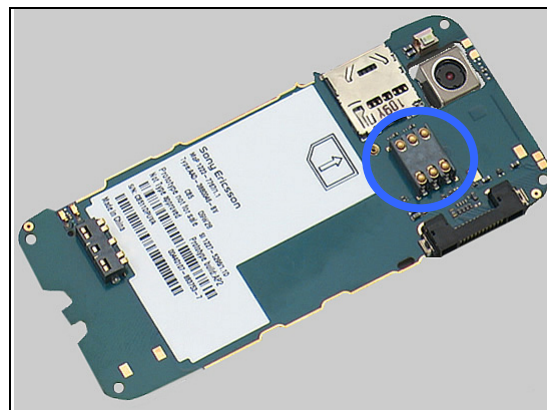
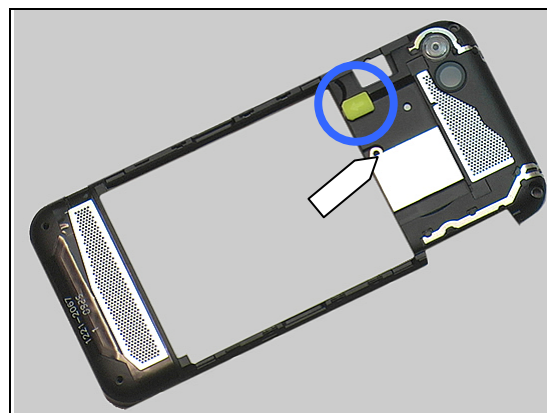
1.14.2 Incorrect SIM indicated

Check:

Check whether the phone is locked to a particular operator and whether the correct operator SIM is being used.

Action:

1. Use a proper operator SIM or test SIM.
2. Send to higher level of repair.



Problem Areas

1.15 Charging

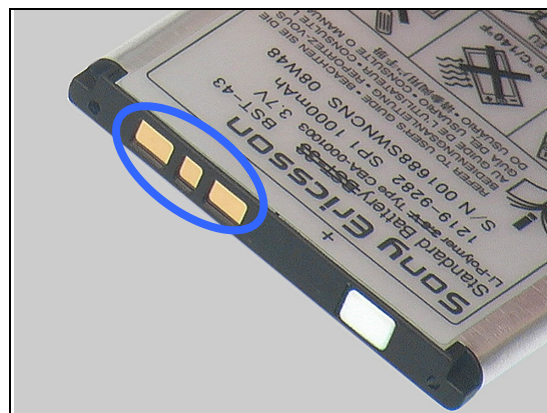
1.15.1 Battery will not charge

Check:

Inspect the contact pads of the Battery.

Action:

1. If dirty or oxidized – clean the pads.
2. If damaged – replace the Battery.

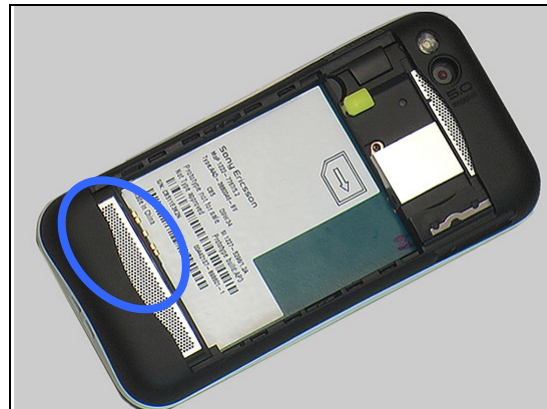


Check:

Inspect the Battery Connector.

Action:

1. If dirty or oxidized – clean the connector.
2. If damaged – send to higher level of repair.



Check:

Inspect the system connector.

Action:

1. If dirty or oxidized – clean the connector.
2. Send to higher level of repair.



Problem Areas

1.16 Bluetooth

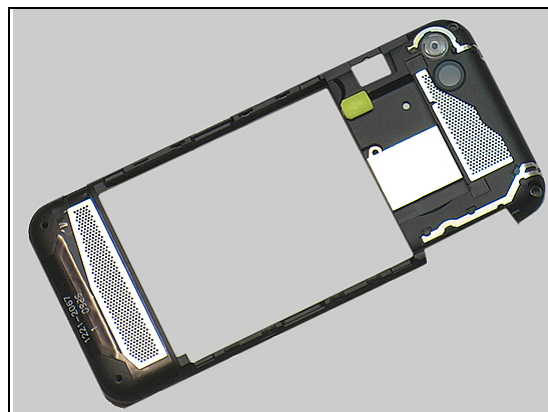
1.16.1 Bluetooth connection failure

Check:

1. Inspect the antenna contact pads on the Main PBA.
2. Inspect the antenna contact pins on the Inner Frame.

Action:

1. If dirty or oxidized – clean the pads and pins.
2. If the pins are damaged – replace the Inner Frame.
3. Send to higher level of repair.



Problem Areas

1.17 GPS

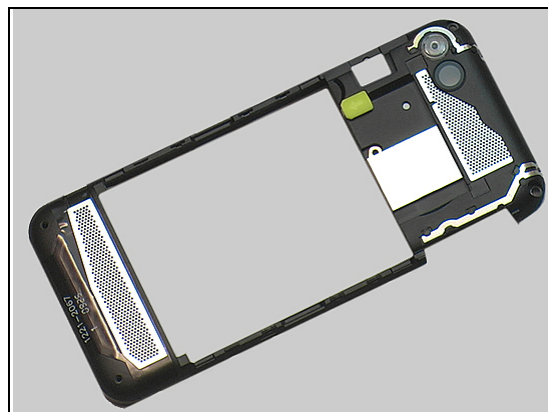
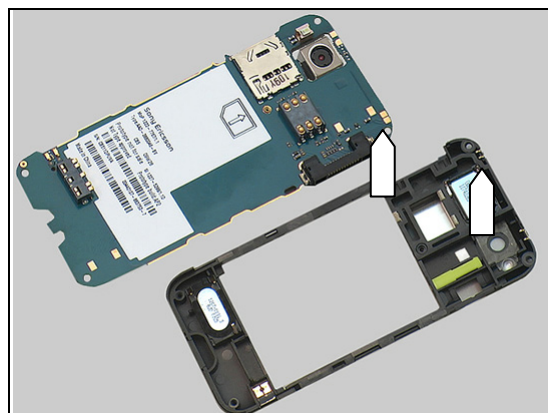
1.17.1 GPS malfunctions

Check:

1. Inspect the GPS antenna contact pads on the Main PBA.
2. Inspect the GPS antenna contact pins on the Inner Frame.

Action:

1. If dirty or oxidized – clean the pads and pins.
2. If the pins are damaged – replace the Inner Frame.
3. Send to higher level of repair.



Problem Areas

1.18 Network & Signal

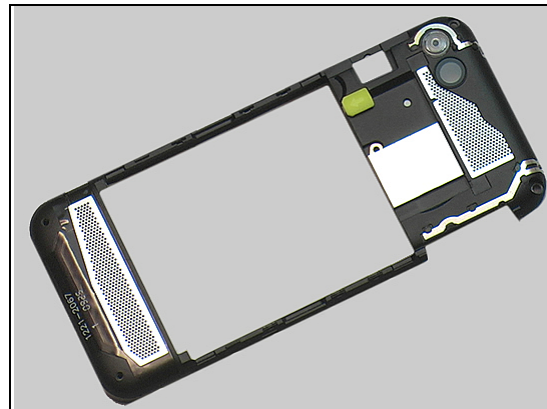
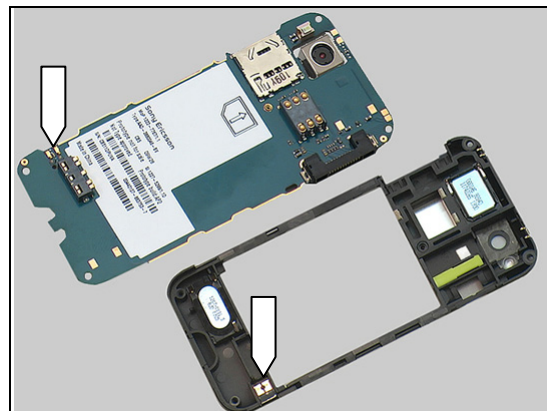
1.18.1 No/Poor signal

Check:

1. Ensure that a correct SIM is installed.
2. Inspect the antenna contact pads on the Main PBA.
3. Inspect the antenna contact pins on the Inner Frame.

Action:

1. If dirty or oxidized – clean the pads and pins.
2. If the pins are damaged – replace the Inner Frame.
3. Send to higher level of repair.



Problem Areas

1.19 Hands Free by Wire

1.19.1 Connection to Portable Hands Free fails

Check:

Inspect the system connector.

Action:

1. If dirty or oxidized – clean the connector.
2. Send to higher level of repair.



Problem Areas

1.20 Data Communication

1.20.1 Data transfer via System Connector fails

Check:

Inspect the system connector.

Action:

1. If dirty or oxidized – clean the connector.
2. Send to higher level of repair.





2 Revision History

Rev.	Date	Changes / Comments
1	2009-Sept-25	Initial release
2	2009-Oct-05	Commercial names added on front page.
3	2010-Jan-14	Updated instructions for Camera QCIF
4	2010-Mar-22	General update of the document.