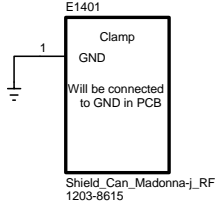
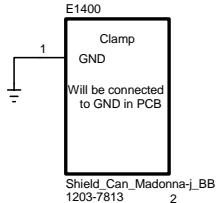
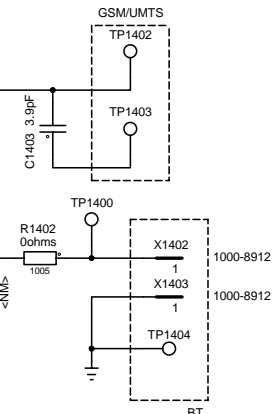


Access side GPIO mapping		
Port	Usage	Page
AccGPIO00	USB_HSSTP	B13
AccGPIO01	USB_HSDIR	B13
AccGPIO02	CTMS	B13
AccGPIO03	CFMS_AID	B13
AccGPIO04	USB_HSINCLK	B13
AccGPIO05	USB_HSNXT	B13
AccGPIO06	USB_HSDATA4	B13
AccGPIO07	USB_HSDATA5	B13
AccGPIO08	USB_HSDATA6	B13
AccGPIO09	USB_HSDATA7	B13
AccGPIO10	FLIP_SENSE	B11
AccGPIO11	OVP_FLAG	B13
AccGPIO12	BT_SPI_INT	R03
AccGPIO13	not used*	T01
AccGPIO14	KEYLOCK	B14
AccGPIO15	FM_RX_LNA_EN	A04
AccGPIO16	USB_HSCHIP_SEL	B13
AccGPIO17	FM_RST	A05
AccGPIO18	USB_HSDATA3	B13
AccGPIO19	BT_SPI_CS0n	R03
AccGPIO20	BT_SPI_DI	R03
AccGPIO21	BT_SPI_DO	R03
AccGPIO22	BT_SPI_CLK	R03
AccGPIO23	FM_TX_INT	A05

Application side GPIO mapping		
Port	Usage	Page
AppGPIO00	FM_INT	A04
AppGPIO01	APP_LOG	B13
AppGPIO02	8GB_LDO_EN	B12
AppGPIO03	not used*	T01
AppGPIO04	not used*	T01
AppGPIO05	AMPCTRL	A02
AppGPIO06	not used*	T01
AppGPIO07	not used*	T01
AppGPIO08	not used*	T01
AppGPIO09	not used*	T01
AppGPIO10	CAM_LDO_EN	I03
AppGPIO11	MCCLK_RET	B12
AppGPIO12	CIFSTANDBY	I03
AppGPIO13	DR_IRQ	B11
AppGPIO14	MEGA_STANDBY	I03

\*Unused GPIO located at page T01

Bluetooth GPIO Mapping		
Port	Usage	Page
BT_GPIO_00	not used	R03
BT_GPIO_08	not used	R03
BT_GPIO_09	not used	R03
BT_GPIO_10	not used	R03
BT_GPIO_11	not used	R03
BT_GPIO_16	not used	R03



Confidential

Approved according to 00021-LXE 107 42/1

SCHEMA

DIAGRAM

Sony Ericsson

Toleransen - Tolerances

Tillhor - Made for

Ritningsregler - Drawing rules

Madonna Top Schematic

Madonna Top

Uppgord (aven faktaansvarig om annan) - Prepared (also subject responsible if other)

Dokumentansvarig/Godkand - Document responsible/Approved

Dokumentnr - Document nr

Datum - Date

Blad - Sheet

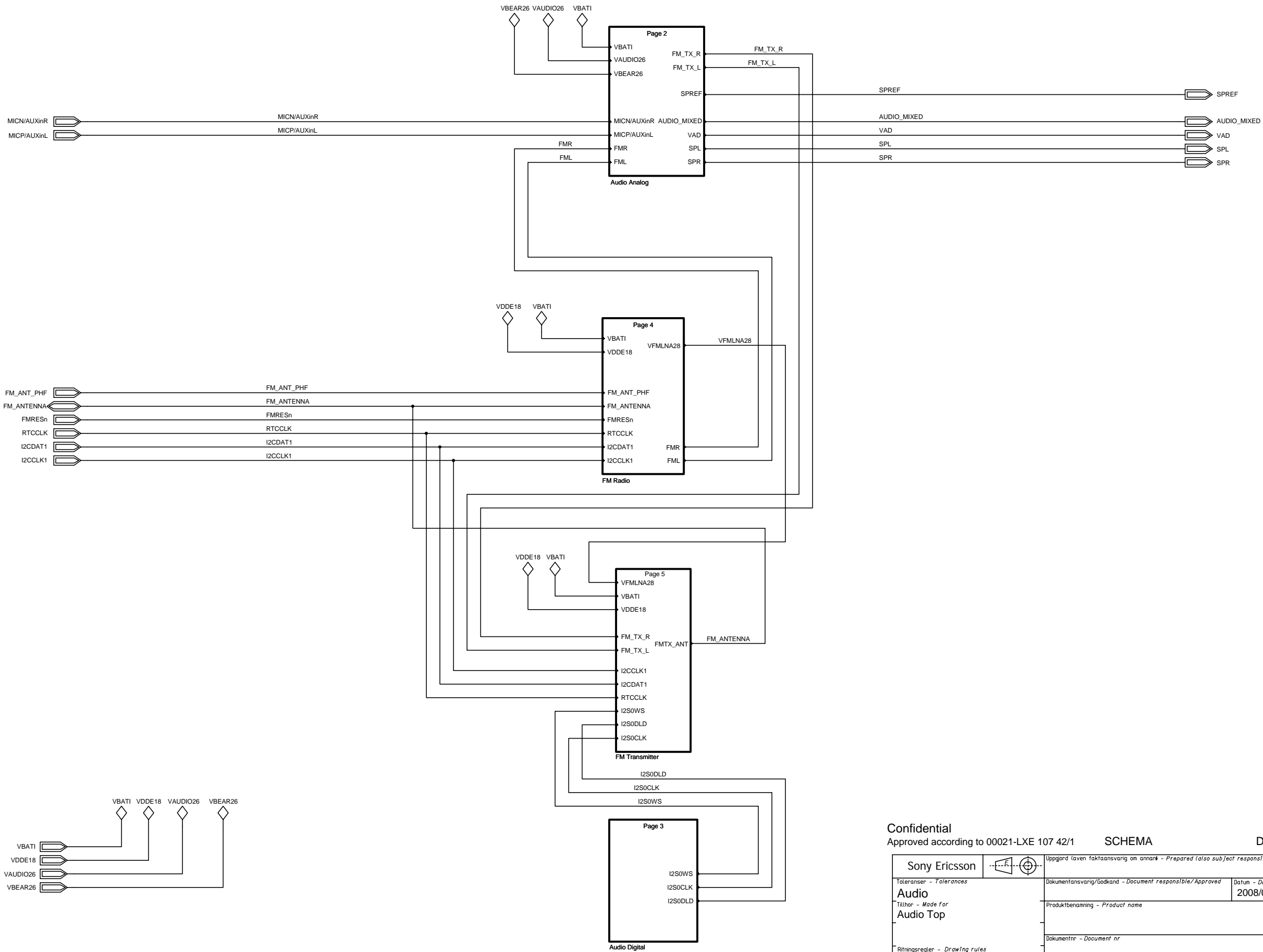
Rev

4

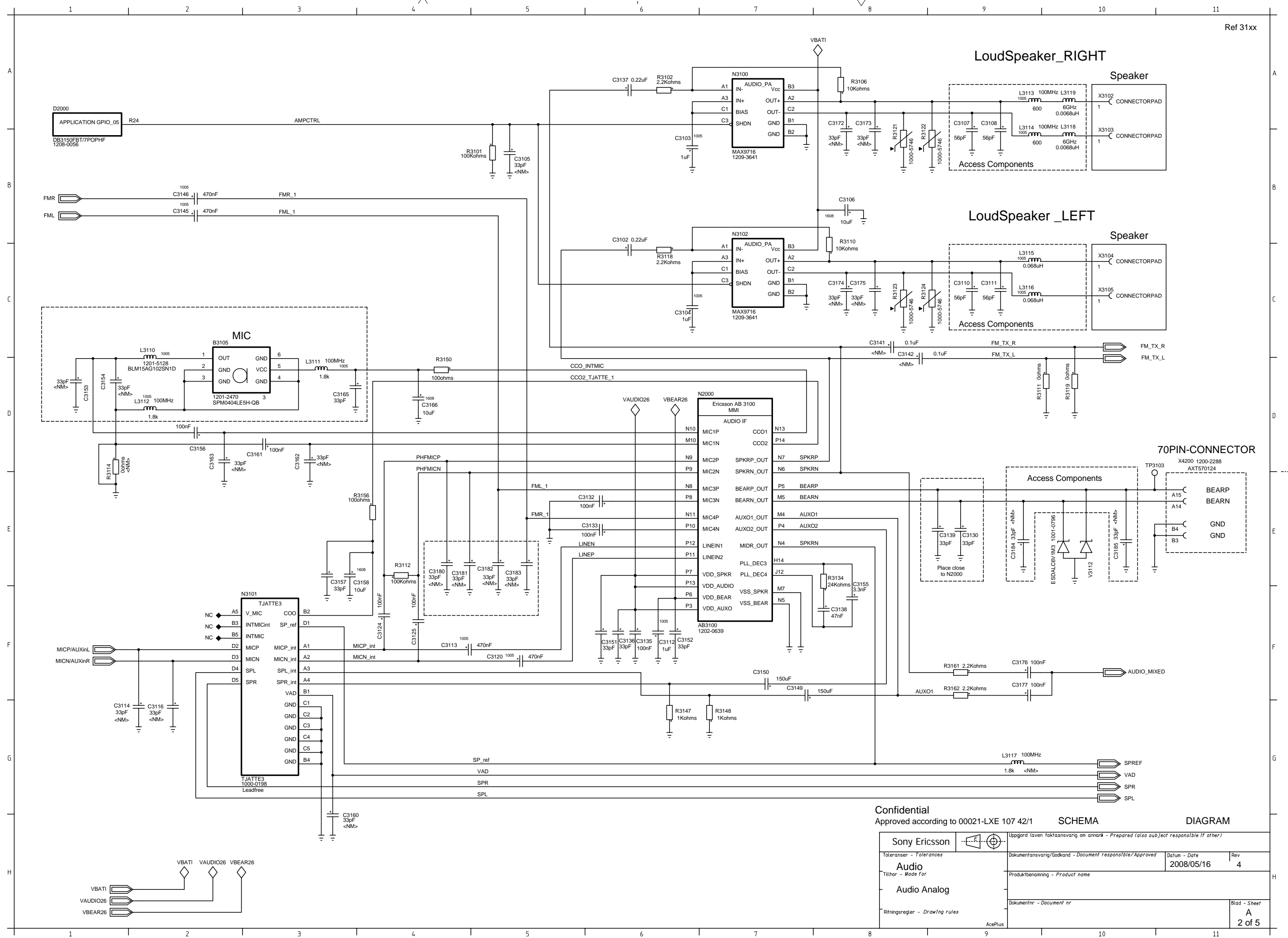
1 of 1

Page T1

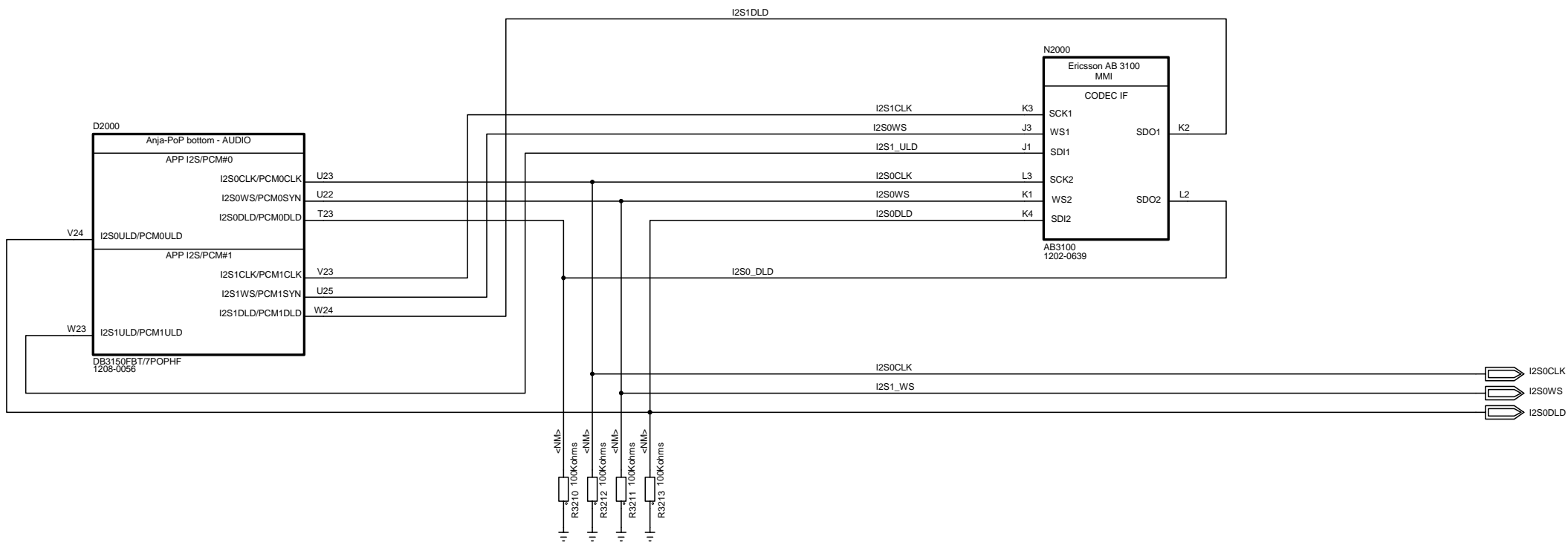
LZF 030 102/F RB



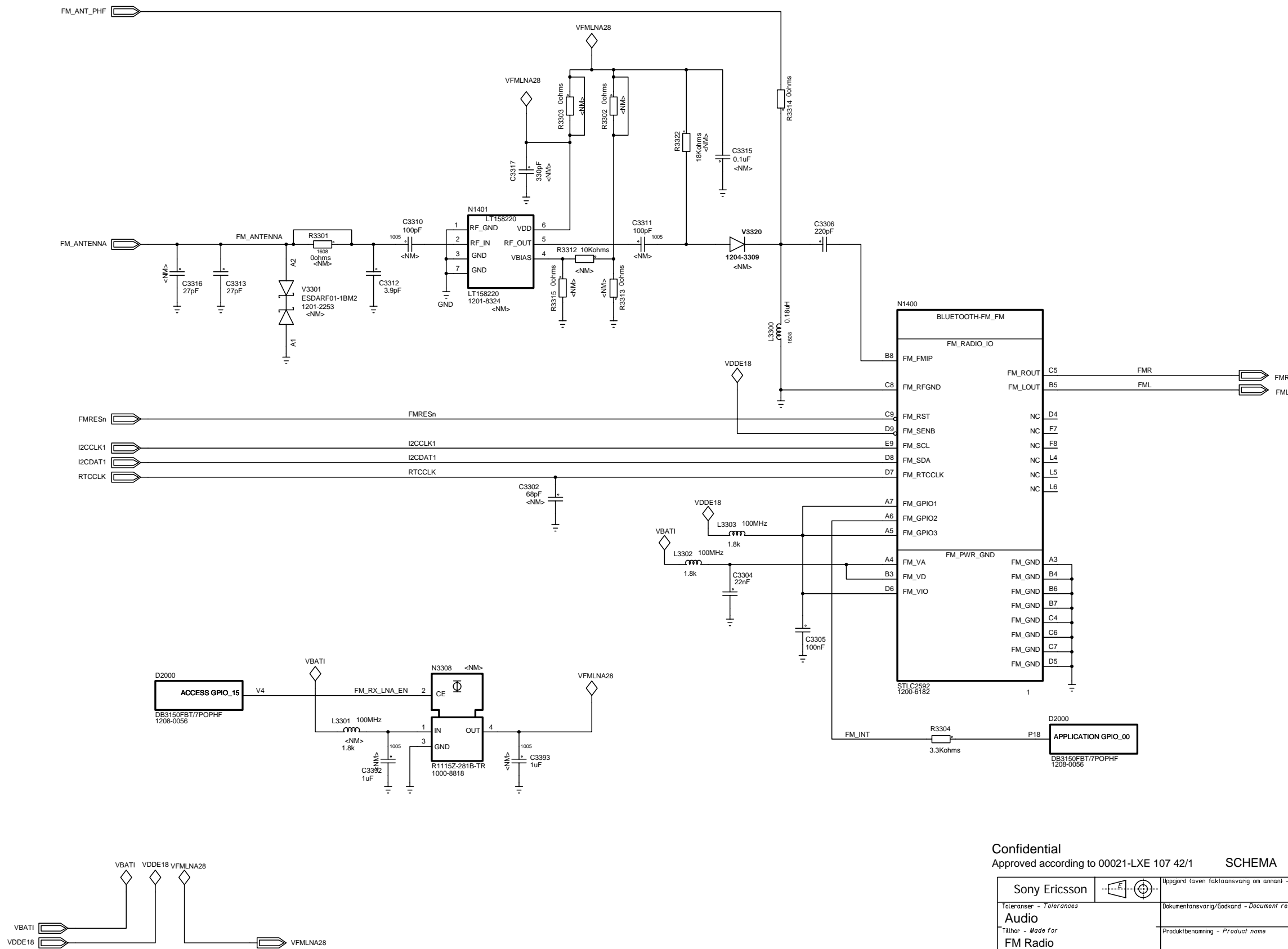
Confidential		Approved according to 00021-LXE 107 42/1		SCHEMA		DIAGRAM	
Sony Ericsson		Uppgjord (även faktaansvarig om annat - Prepared (also subject responsible if other))					
Toleransen - Tolerances		Dokumentansvarig/Godkänd - Document responsible/Approved		Datum - Date		Rev	
Audio				2008/05/16		4	
Tillhör - Made for		Produktbenämning - Product name					
Audio Top							
Ritningsregler - Drawing rules		Dokumentnr - Document nr				Blad - Sheet	
						A	
						1 of 5	



LZF 030 102/F RB



Confidential		Approved according to 00021-LXE 107 42/1		SCHEMA		DIAGRAM	
Sony Ericsson		Uppgjord (även faktaansvarig om annan) - Prepared (also subject responsible if other)					
Toleransen - Tolerances		Dokumentansvarig/Godkänd - Document responsible/Approved		Datum - Date		Rev	
Audio				2008/05/16		4	
Tillhör - Made for		Produktbenämning - Product name					
Audio Digital							
Ritningsregler - Drawing rules		Dokumentnr - Document nr				Blad - Sheet	
						A	
						3 of 5	



Confidential

Approved according to 00021-LXE 107 42/1

SCHEMA

DIAGRAM

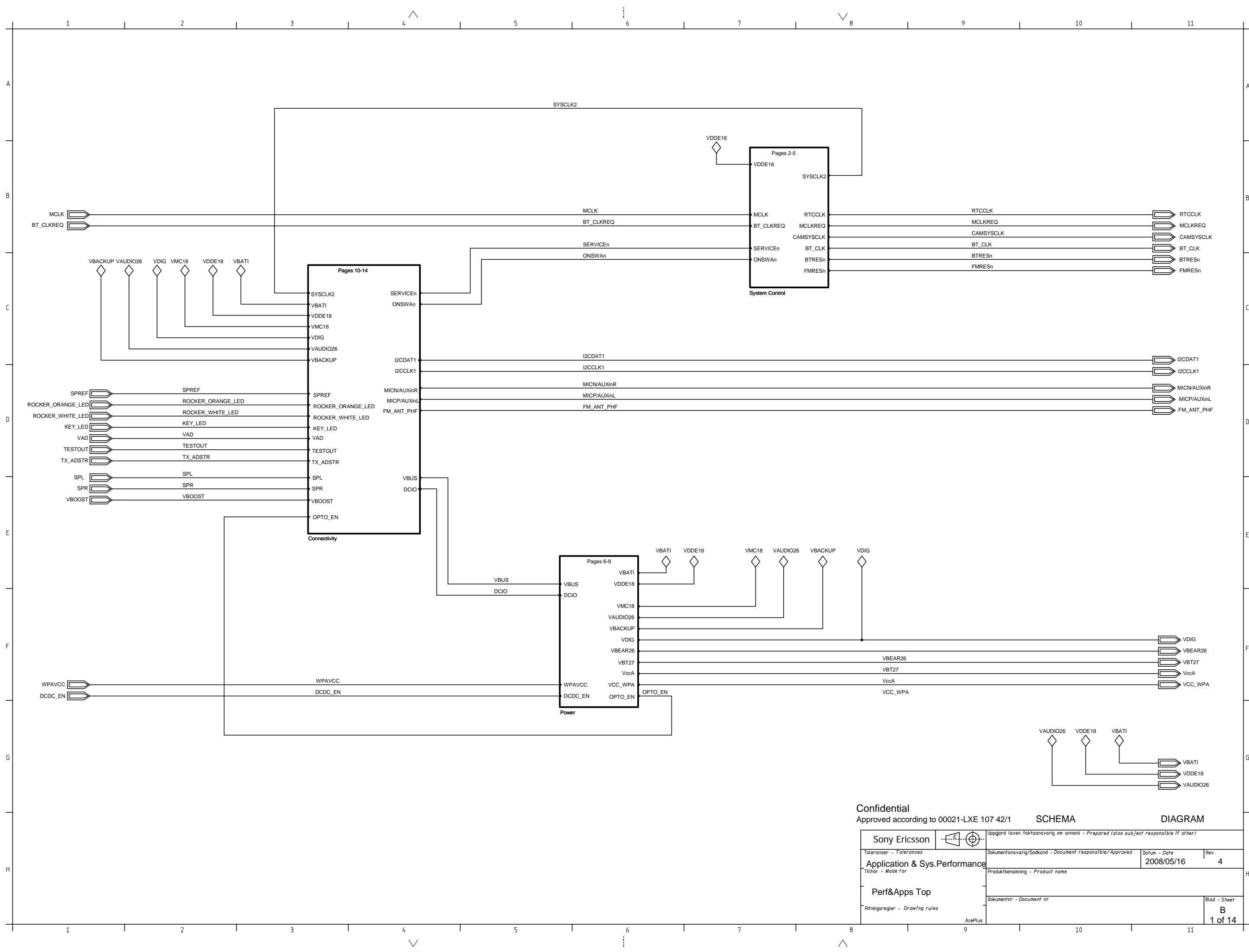
Sony Ericsson	Uppgörd (även faktaansvarig om annan) - Prepared (also subject responsible if other)		
Toleransen - Tolerances	Dokumentansvarig/Godkänd - Document responsible/Approved	Datum - Date	Rev
Audio		2008/05/16	4
Tillhör - Made for	Produktbenämning - Product name		
FM Radio			
Ritningsregler - Drawing rules	Dokumentnr - Document nr		Blad - Sheet
			A
			4 of 5

LZF 030 102/F RB

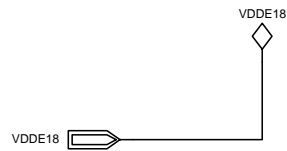
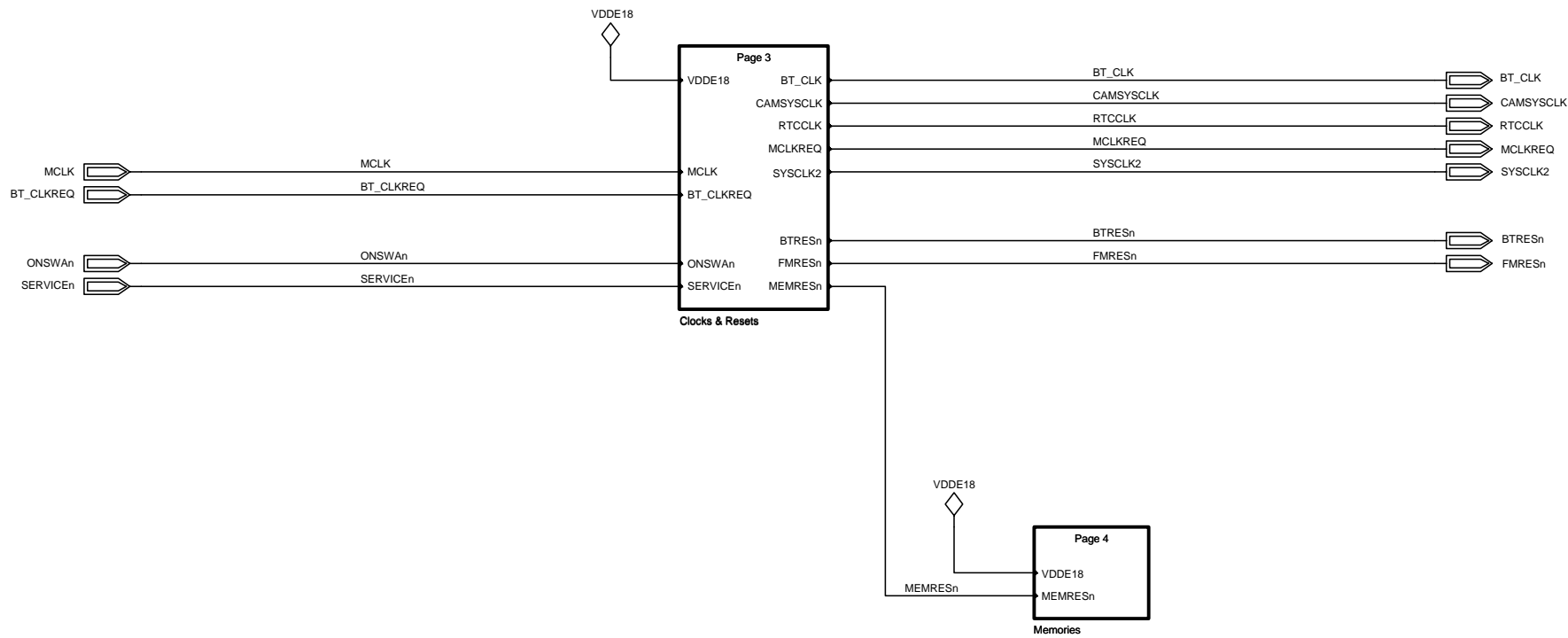


AcePlus

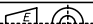
LZF 030 102/F RB



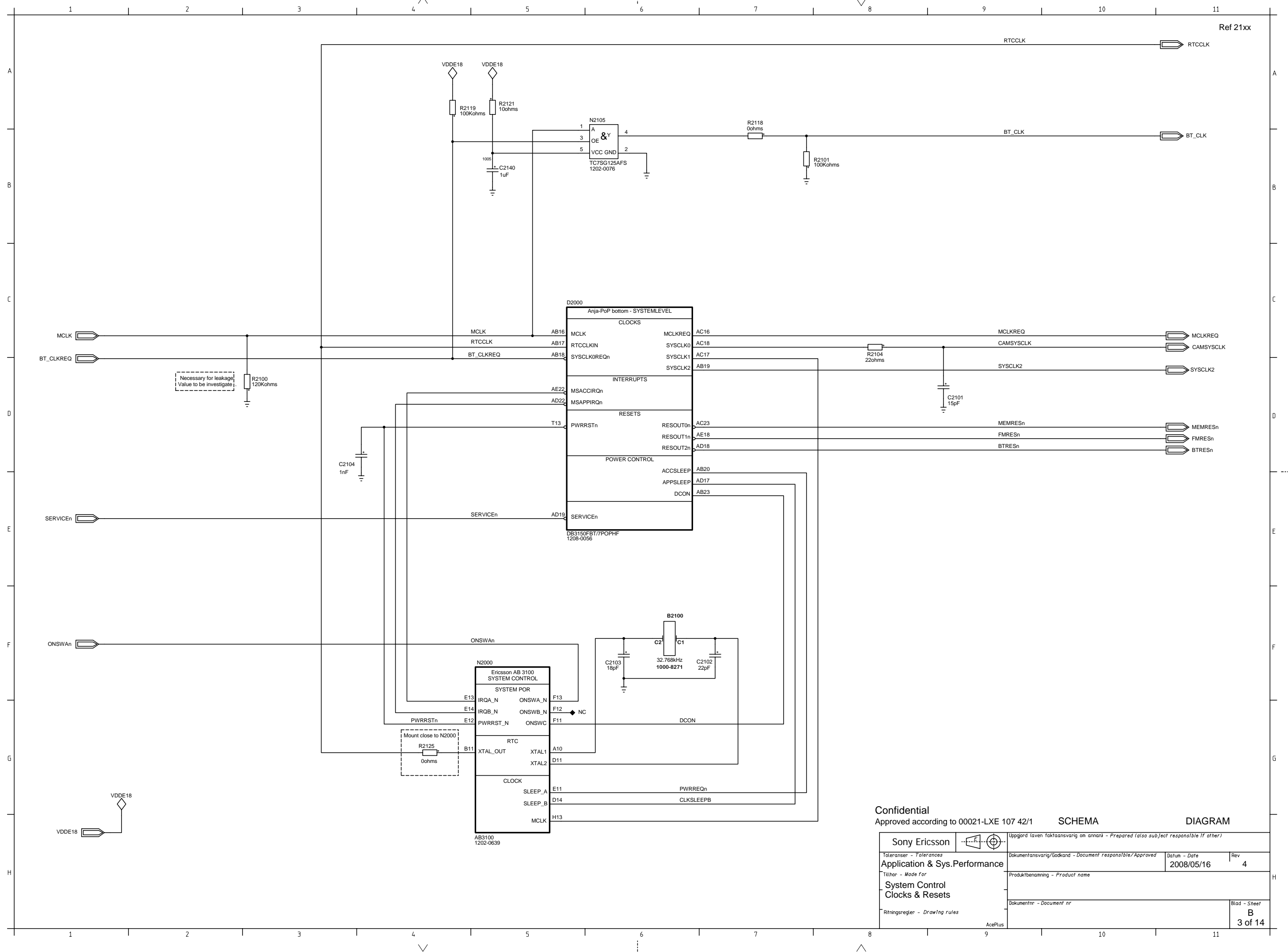
LZF 030 102/F RB

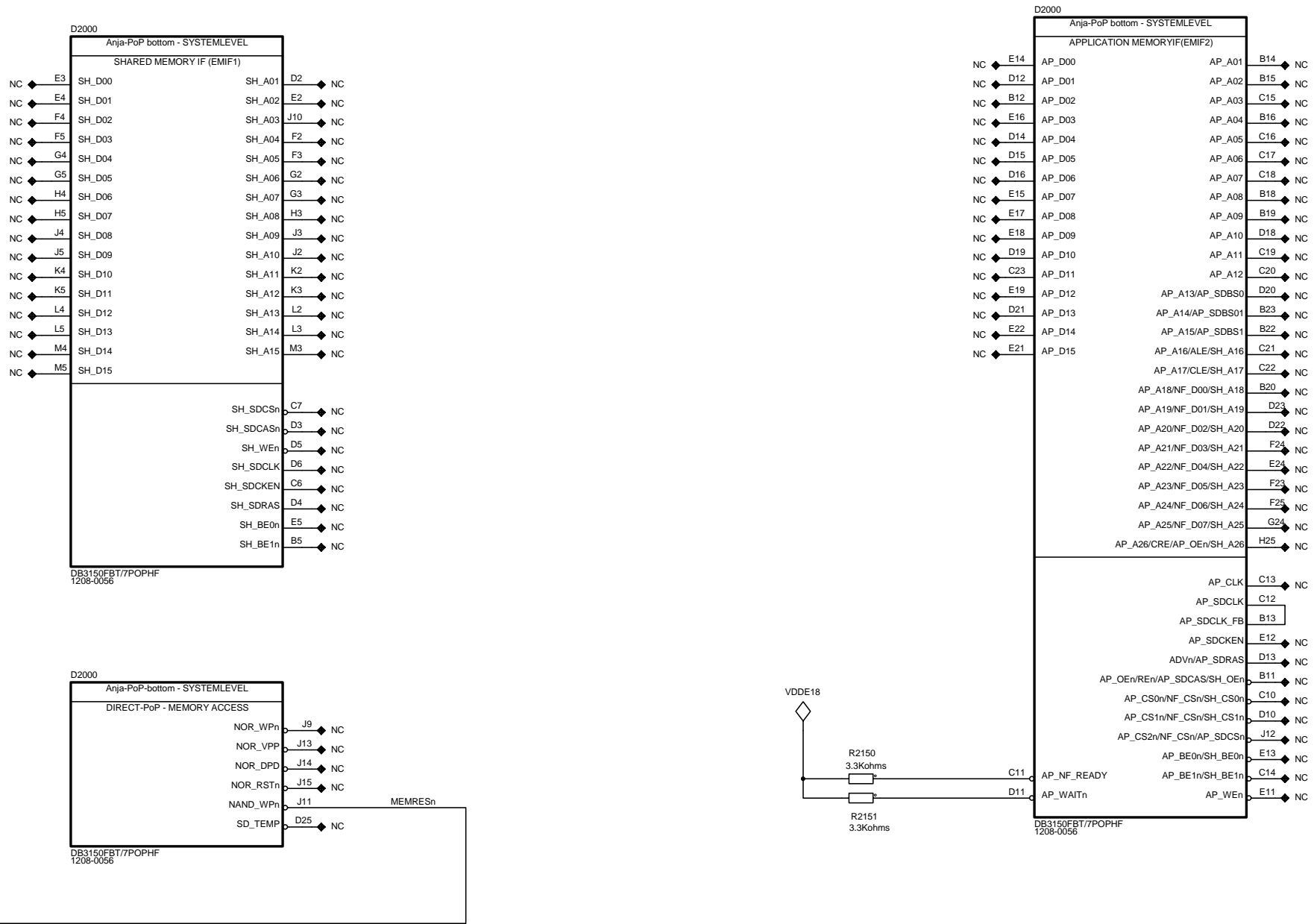


Confidential  
Approved according to 00021-LXE 107 42/1

Sony Ericsson		Uppgörd (även faktaansvarig om annan) - Prepared (also subject responsible if other)	
			
Toleranser - Tolerances		Dokumentansvarig/Godkänd - Document responsible/Approved	Datum - Date
Application & Sys.Performance			2008/05/16
Tillhör - Made for		Rev	4
System Top		Produktbenämning - Product name	
Ritningsregler - Drawing rules		Dokumentnr - Document nr	Blad - Sheet
			B
AcePlus			2 of 14

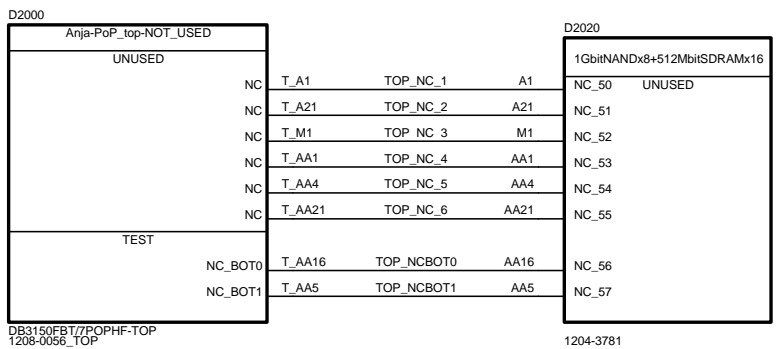
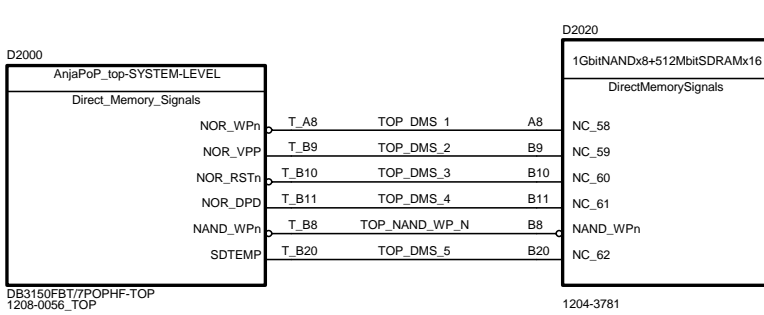
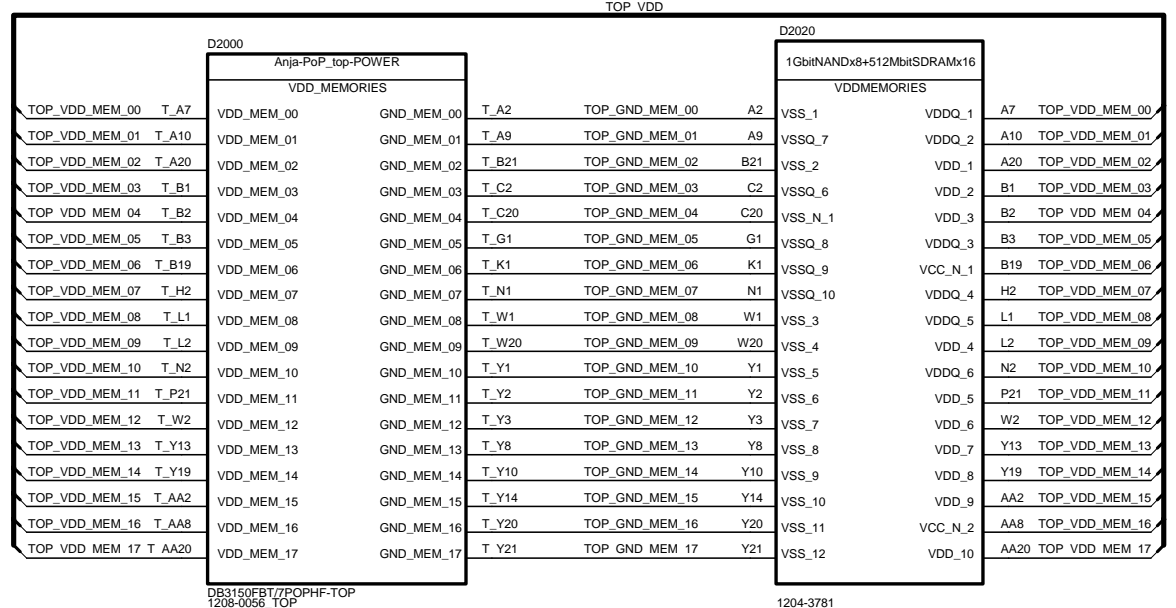
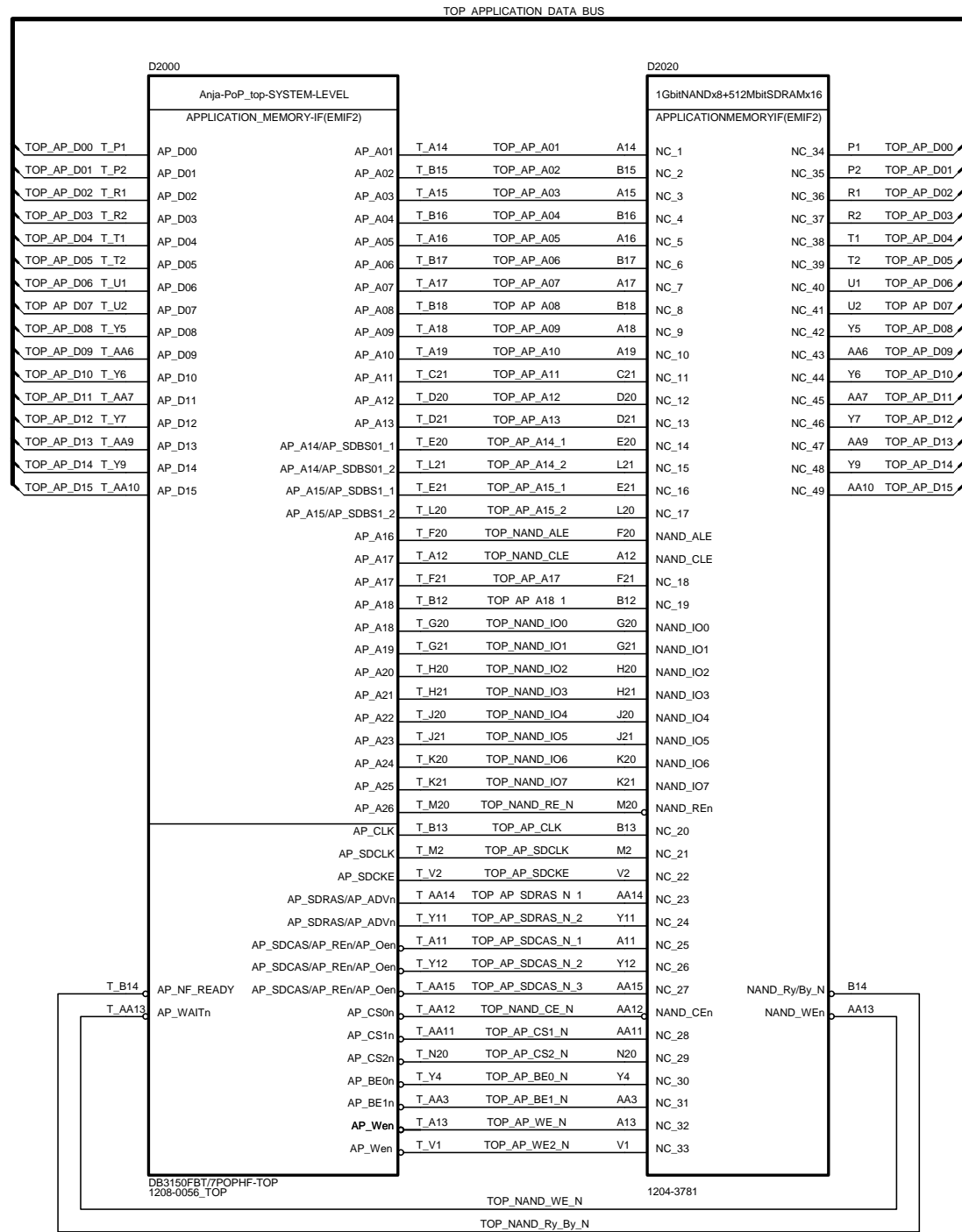
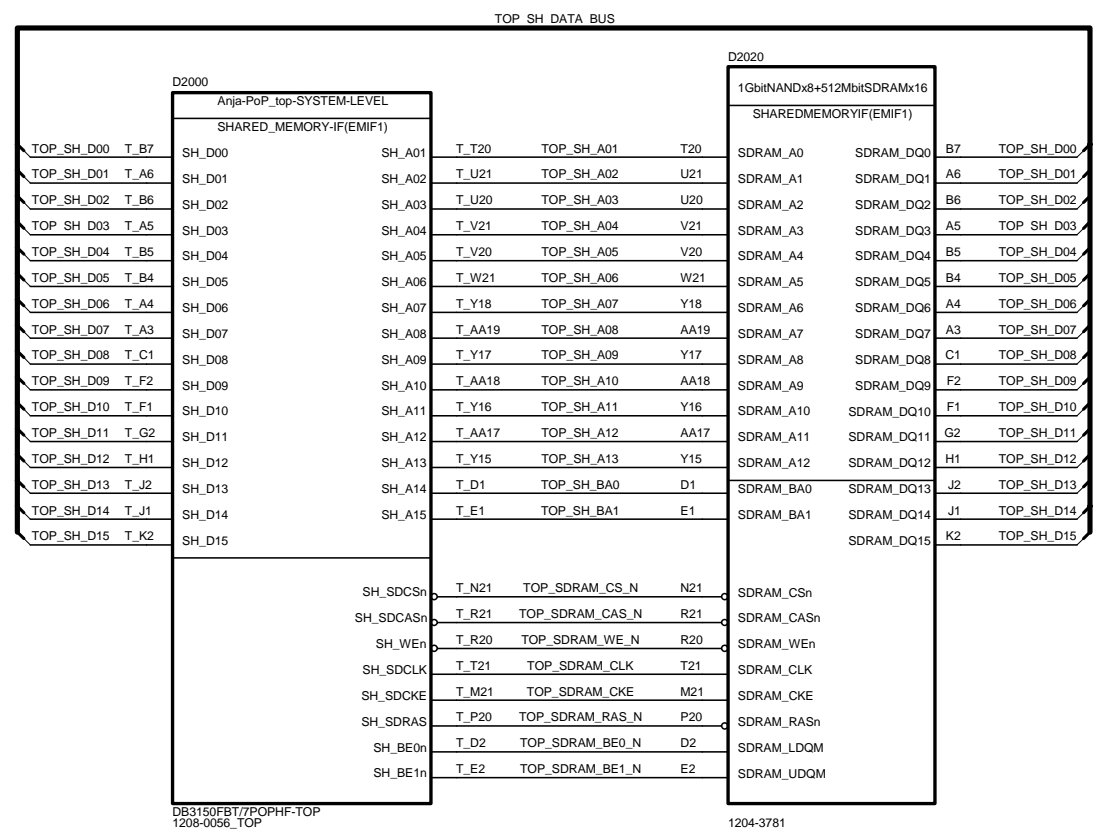






# Interface between Anja PoP top and PoP-mounted memories

Ref 21xx



Confidential

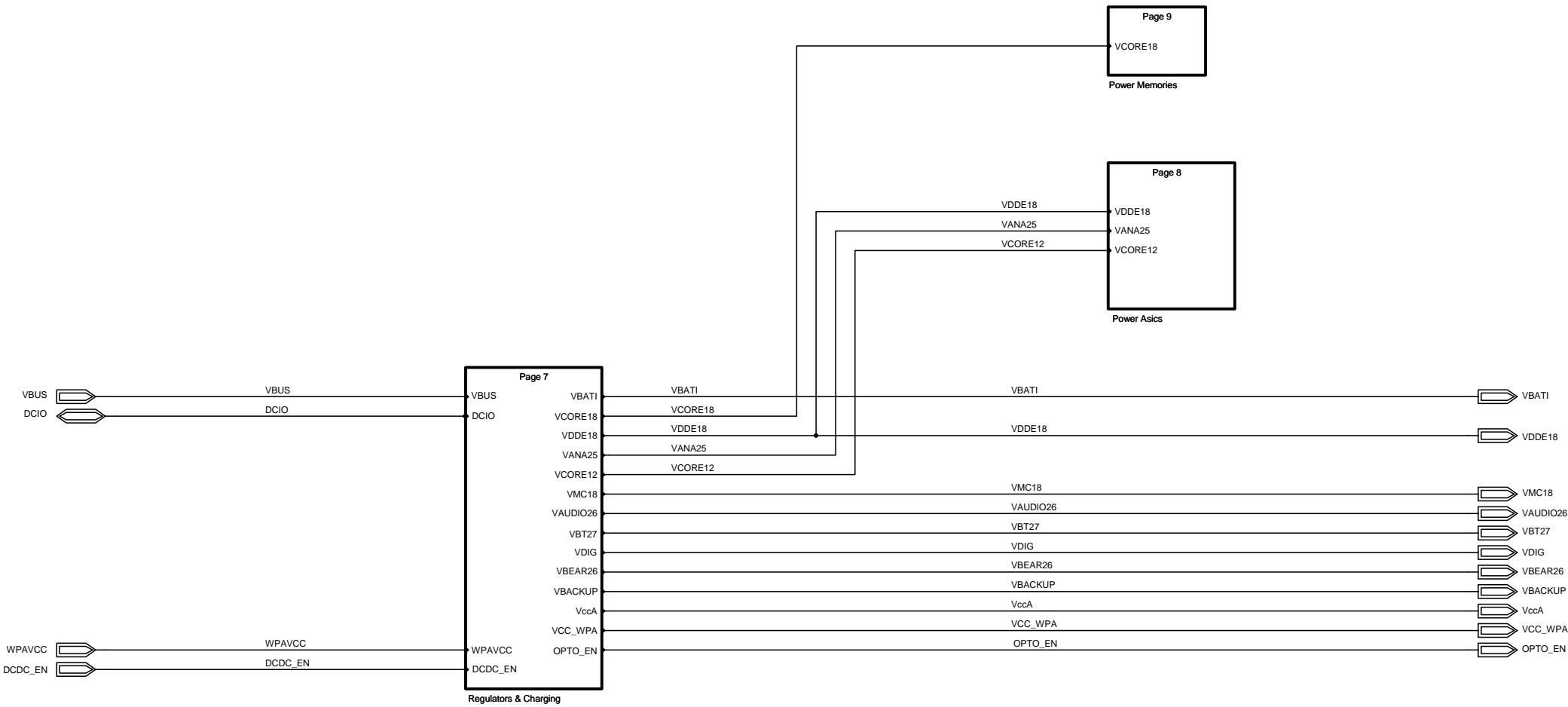
Approved according to 00021-LXE 107 42/1

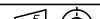
SCHEMA

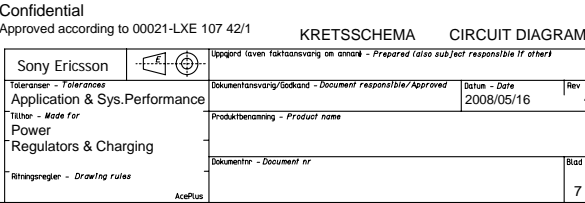
DIAGRAM

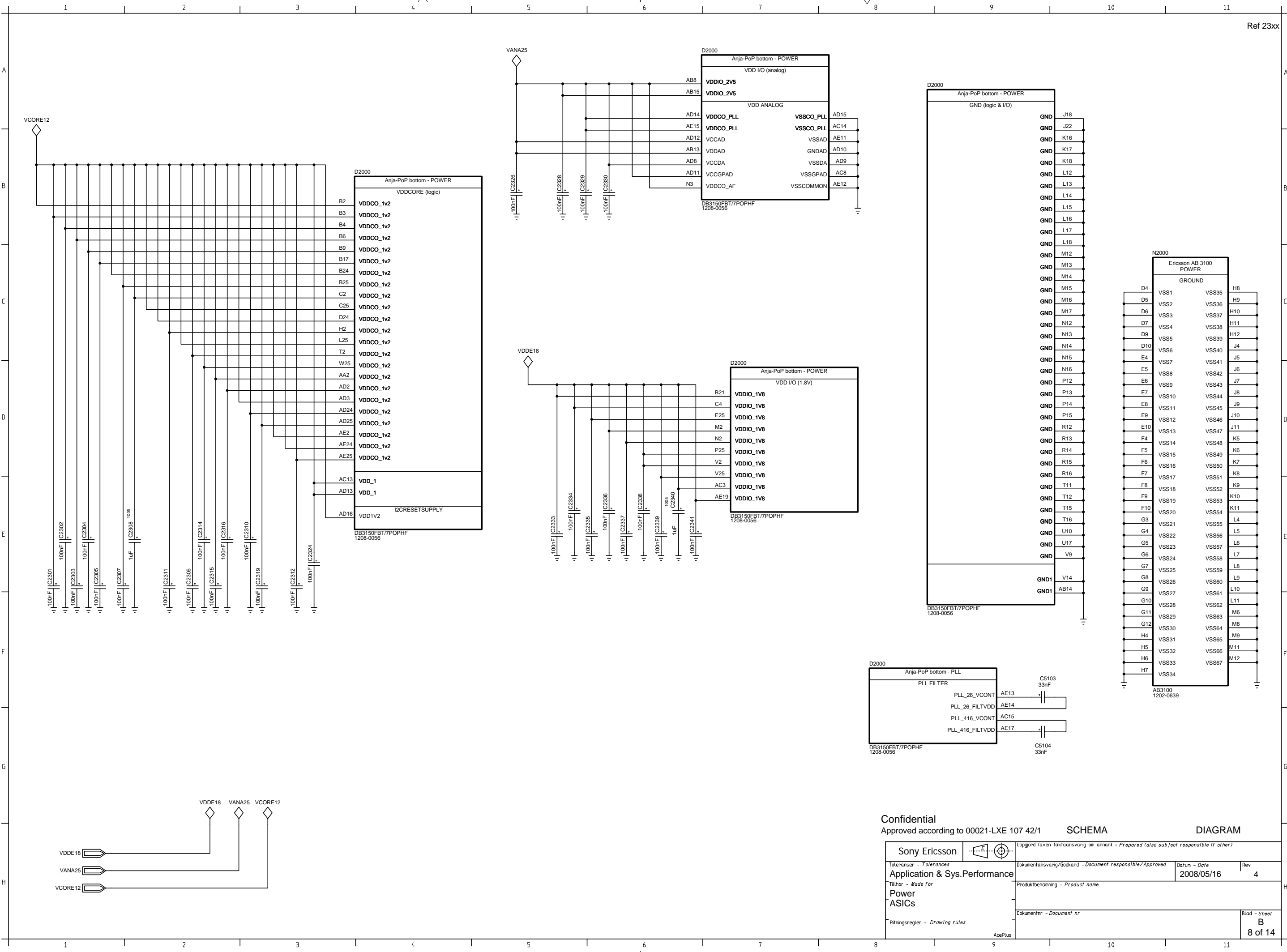
Sony Ericsson	Uppgjord (även faktaansvarig om annan) - Prepared (also subject responsible if other)		
Toleransen - Tolerances	Dokumentansvarig/Godkänd - Document responsible/Approved	Datum - Date	Rev
Application & Sys.Performance	2008/05/16	4	
Tillhör - Made for	Produktbenämning - Product name		
System PoP IF			
Ritningsregler - Drawing rules	Dokumentnr - Document nr		
		Blad - Sheet	
		B	
		5 of 14	

LZF 030 102/F RB



Confidential		Approved according to 00021-LXE 107 42/1		SCHEMA		DIAGRAM	
Sony Ericsson				Uppgjord (även faktaansvarig om annat - Prepared (also subject responsible if other))			
Toleransen - Tolerances		Application & Sys.Performance		Dokumentansvarig/Godkänd - Document responsible/Approved		Datum - Date	Rev
						2008/05/16	4
Tillhör - Made for		Power Top		Produktbenämning - Product name			
Ritningsregler - Drawing rules				Dokumentnr - Document nr		Blad - Sheet	
		AcePlus				B	
						6 of 14	



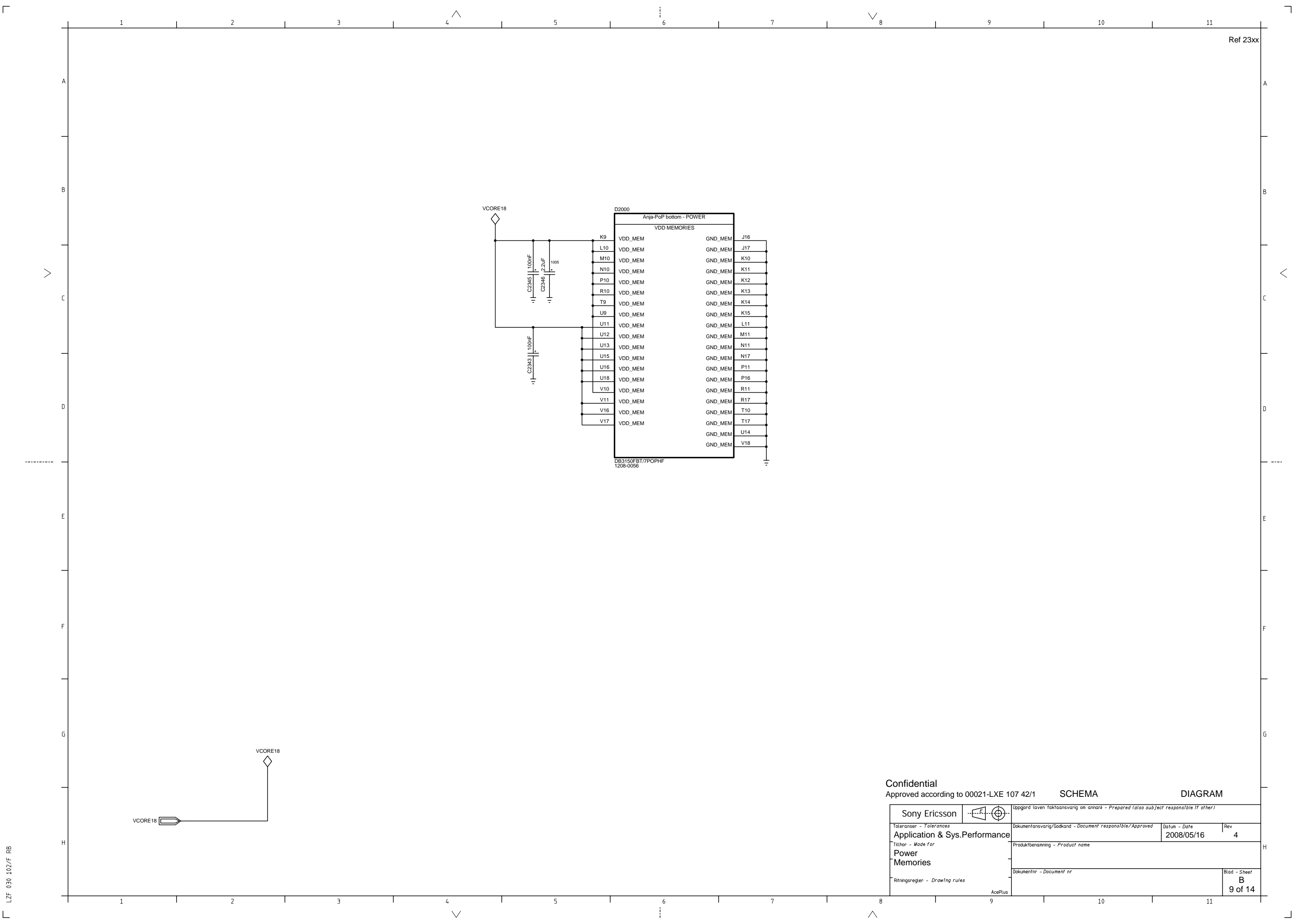


Confidential  
Approved according to 00021-LXE 107 42/1

SCHEMA

DIAGRAM

Sony Ericsson		Uppgörd (även faktaansvarig om annan) - Prepared (also subject responsible if other)	
Toleransen - Tolerances		Dokumentansvarig/Godkänd - Document responsible/Approved	
Application & Sys.Performance		Datum - Date	
Tillhör - Made for		2008/05/16	
Power ASICs		Rev	
Ritningsregler - Drawing rules		4	
		Produktbenämning - Product name	
		Dokumentnr - Document nr	
		Blad - Sheet	
		B	
		8 of 14	



Confidential

Approved according to 00021-LXE 107 42/1

SCHEMA

DIAGRAM

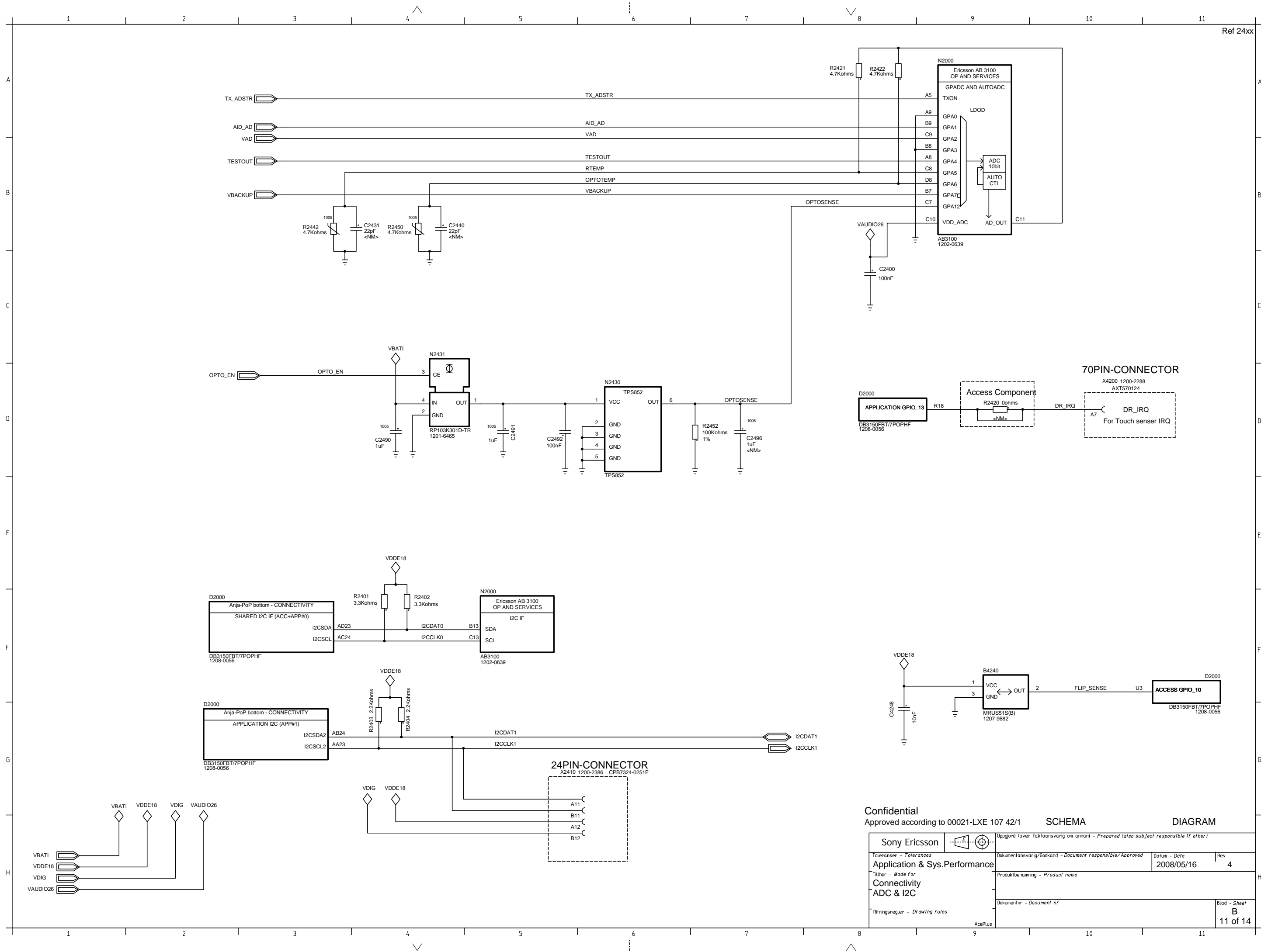
Sony Ericsson		Uppgjord (även faktaansvarig om annan) - Prepared (also subject responsible if other)	
Toleransen - Tolerances		Dokumentansvarig/Godkänd - Document responsible/Approved	Datum - Date
Application & Sys.Performance		2008/05/16	Rev 4
Tillhör - Made for		Produktbenämning - Product name	
Power			
Memories			
Ritningsregler - Drawing rules		Dokumentnr - Document nr	Blad - Sheet
			B 9 of 14

AcePlus

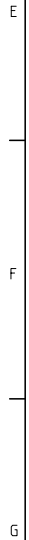





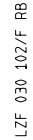
LZF 030 102/F RB

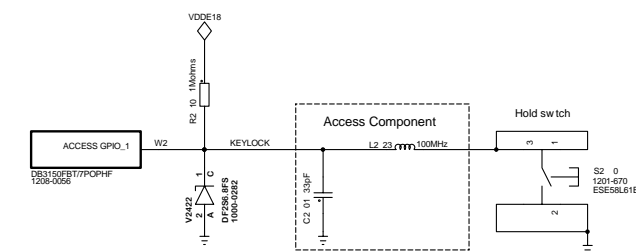
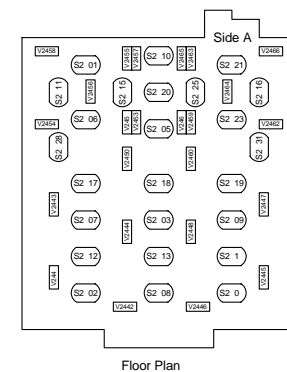
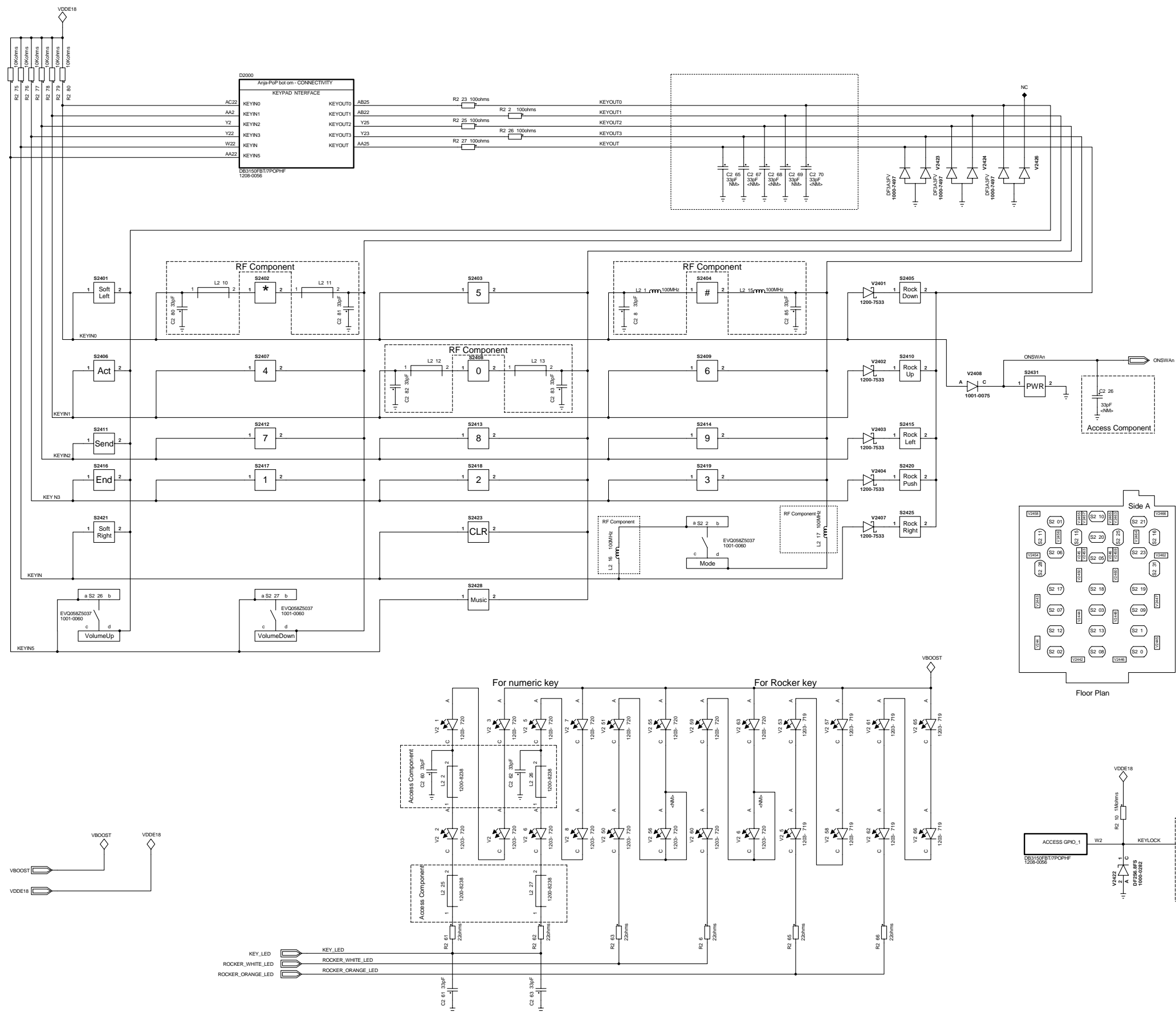


Confidential		Approved according to 00021-LXE 107 42/1		SCHEMA		DIAGRAM	
Sony Ericsson		Uppgörd (även faktaansvarig om annan - Prepared (also subject responsible if other))					
Toleransen - Tolerances		Dokumentansvarig/Godkänd - Document responsible/Approved		Datum - Date		Rev	
Application & Sys.Performance				2008/05/16		4	
Tillhör - Made for		Produktbenämning - Product name					
Connectivity							
ADC & I2C							
Ritningsregler - Drawing rules		Dokumentnr - Document nr				Blad - Sheet	
						B	
						11 of 14	



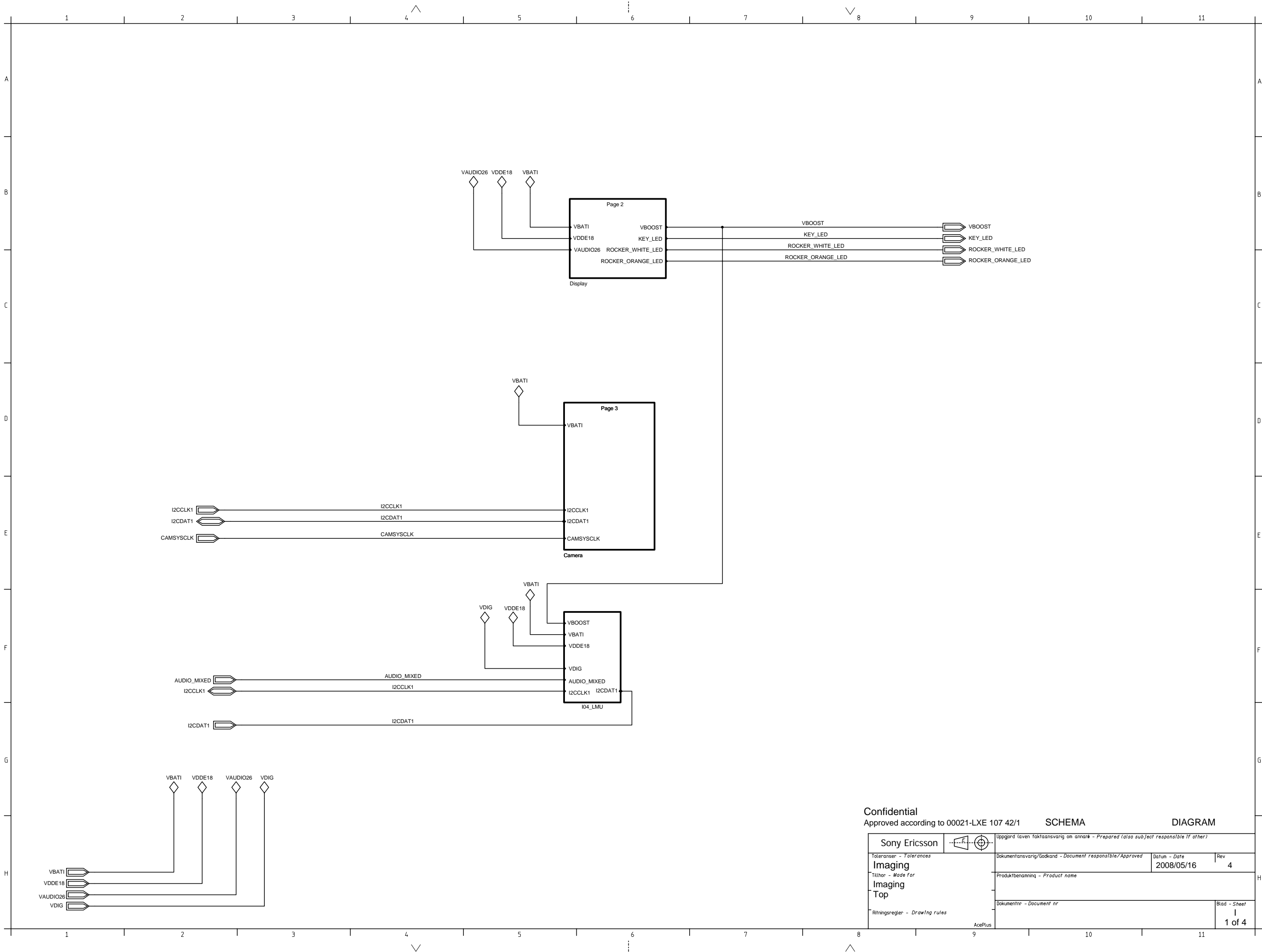
<b>Sony Ericsson</b> 		Uppgård (även faktaansvarig om anmån - Prepared (also subject responsible if other))		
Toleranser - <i>Tolerances</i> <b>Application &amp; Sys.Performance</b>		Dokumentansvarig/Godkänd - <i>Document responsible/Approved</i>	Datum - <i>Date</i> 2008/05/16	Rev 4
Tillhör - <i>Made for</i> <b>Connectivity Cards</b>		Produktbenämning - <i>Product name</i>  		
Ritningsregler - <i>Drawing rules</i>  AcePlus		Dokumentnr - <i>Document nr</i>  		Blad - <i>Sheet</i> B 12 of 14



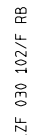


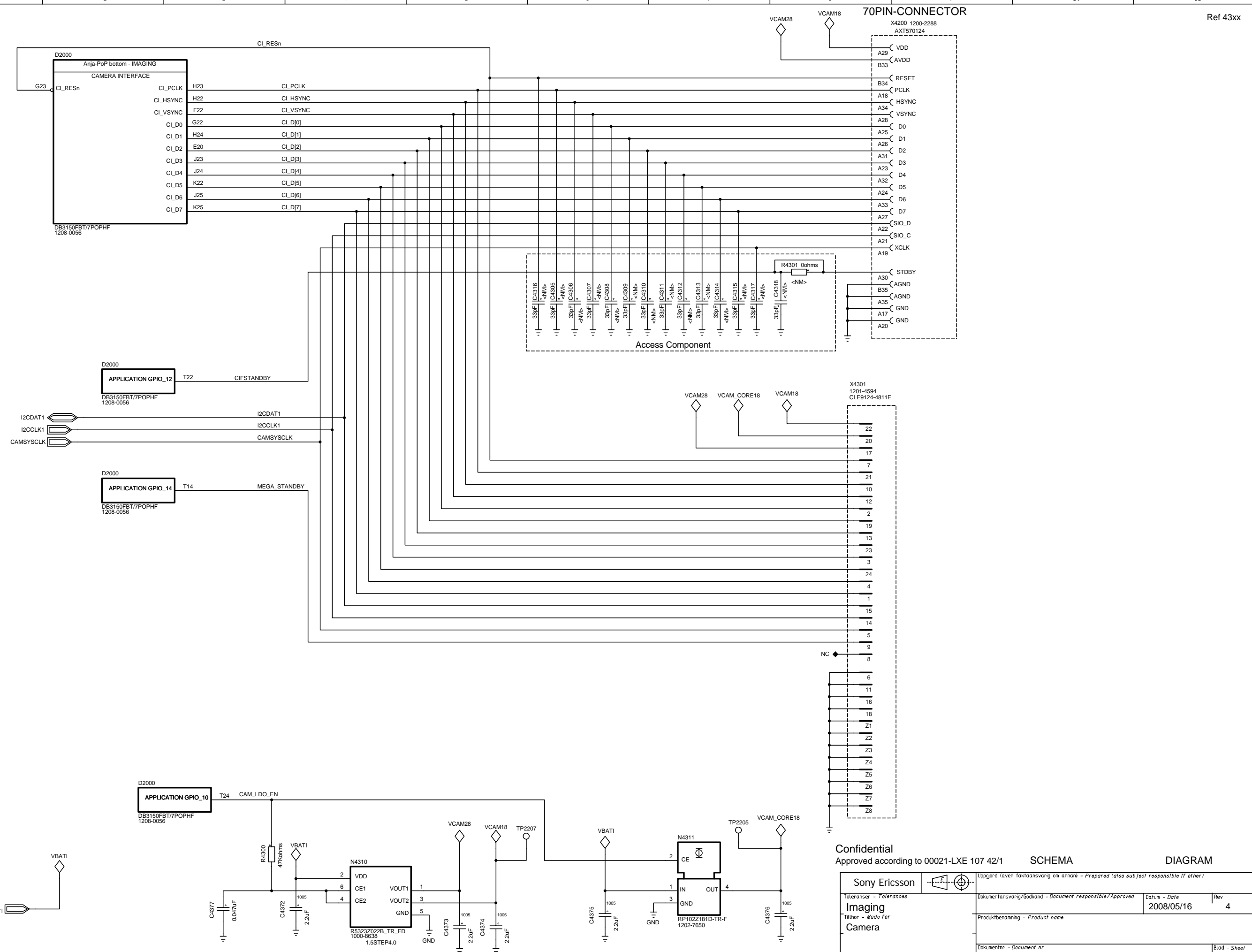
Confidential Approved according to 00021-LXE 107 42/1			
Sony Ericsson		KRETSSCHEMA CIRCUIT DIAGRAM	
Toleranser - Tolerances	Dokumentansvarig/Godkänd - Document responsible/Approved	Datum - Date	Rev
Application & Sys.Performance		2008/05/16	4
Tillver - Made for	Produktbenämning - Product name		
Connectivity Keypad			
Ritningsregler - Drawing rules	Dokumentnr - Document nr		
Blad - Sheet			B
			14 of 14

LZF 030 102/F RB



Confidential		Approved according to 00021-LXE 107 42/1		SCHEMA		DIAGRAM	
Sony Ericsson		Uppgörd (även faktaansvarig om annat - Prepared (also subject responsible if other))					
Toleransen - Tolerances		Dokumentansvarig/Godkänd - Document responsible/Approved		Datum - Date		Rev	
Imaging				2008/05/16		4	
Tillhör - Made for		Produktbenämning - Product name					
Imaging							
Top							
Ritningsregler - Drawing rules		Dokumentnr - Document nr		Blad - Sheet			
				1		1 of 4	

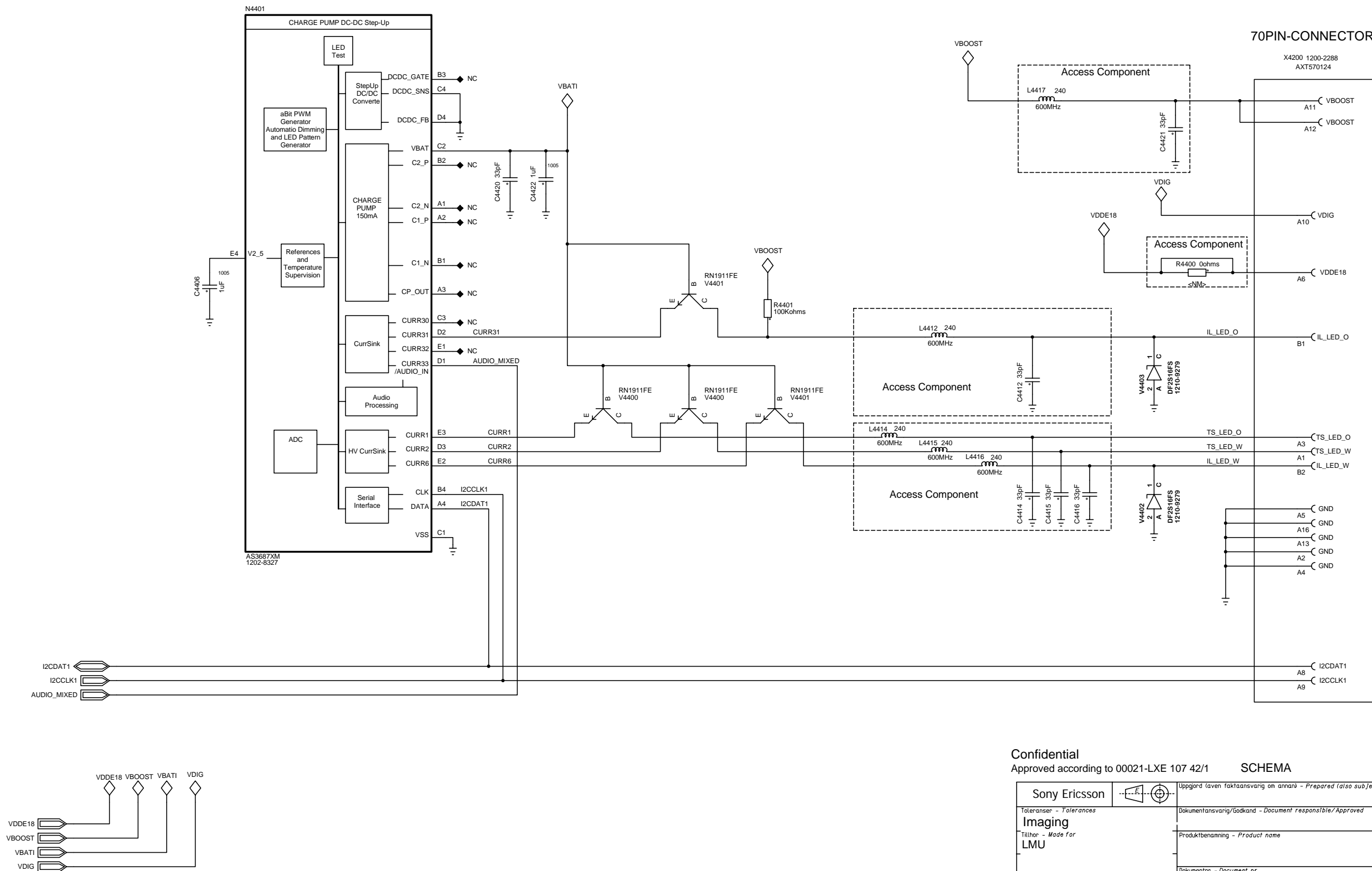




LZF 030 102/F RB

1 2 3 4 5 6 7 8 9 10 11

Ref 44xx



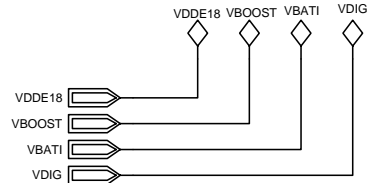
Confidential

Approved according to 00021-LXE 107 42/1

SCHEMA

DIAGRAM

Sony Ericsson		Uppgörd (även faktaansvarig om annan) - Prepared (also subject responsible if other)		
Toleransen - Tolerances		Dokumentansvarig/Godkänd - Document responsible/Approved		Datum - Date
Imaging		2008/05/16		Rev 4
Tillhör - Made for		Produktbenämning - Product name		
LMU				
Ritningsregler - Drawing rules		Dokumentnr - Document nr		Blad - Sheet
				1 of 4



1 2 3 4 5 6 7 8 9 10 11



