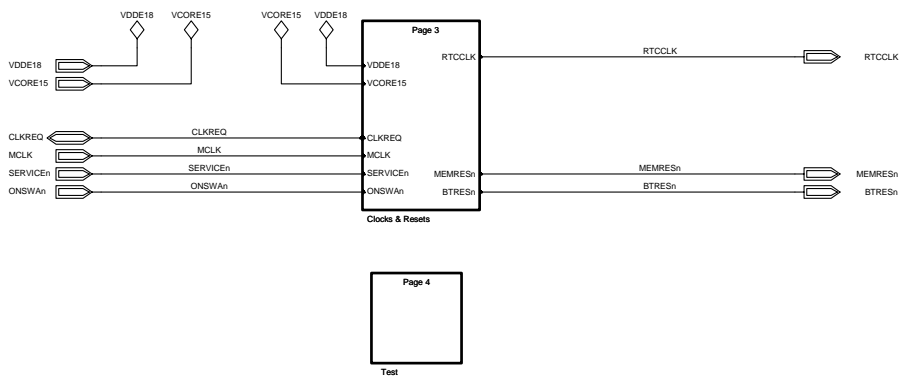





LZF 030 102/F RB



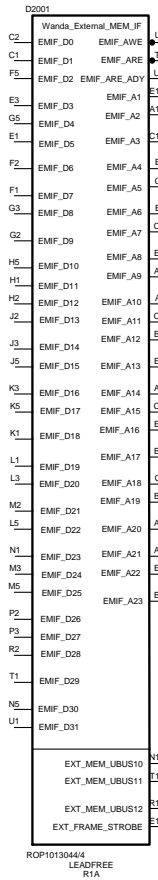
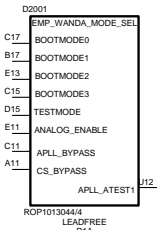
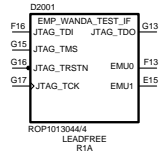
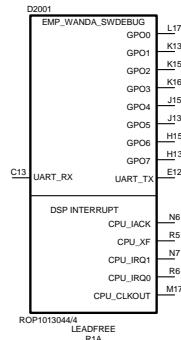
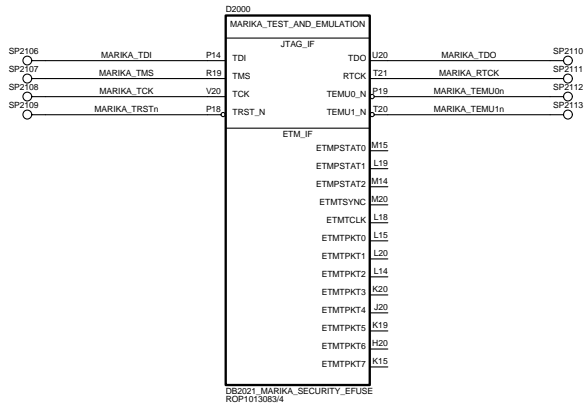
Confidential		Approved according to 00021-LXE 107 42/1		SCHEMA		DIAGRAM	
Sony Ericsson				Uppgifter (even faktasvaring on annan) - Prepared (also subject responsible if other)			
Toleranser - Tolerances		SEMCI/ Naoki Tada		Dokumentansvarig/Godkänd - Document responsible/Approved		Datum - Date	Rev
BASEBAND		SEMCI/ Tomokazu Ishii		2006/07/03		C	
Färdig - Made for		Produktbenämning - Product name		MIYU			
System Control Top		Dokumentnr - Document nr		2/1911-ROA 128 1893/2		Blad - Sheet	
Ritningsregler - Drawing rules		AcerPlus				02 of 23	
8		9		10		11	



1 2 3 4 5 6 7 8 9 10 11

A  
B  
C  
D  
E  
F  
G  
H

A  
B  
C  
D  
E  
F  
G  
H



Confidential

Approved according to 00021-LXE 107 42/1

SCHEMA

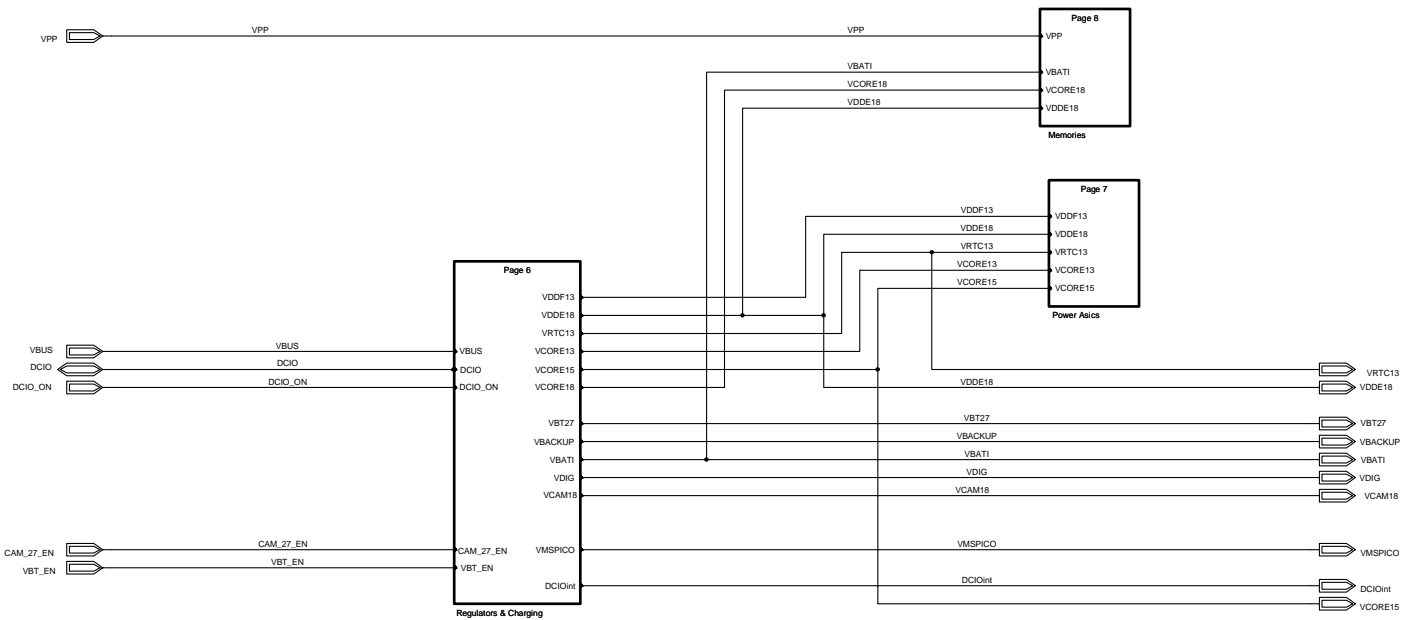
DIAGRAM

Sony Ericsson		Approved (even faktasvaring on arnan) - Prepared (also subject responsible if other)	
BASEBAND		SEM CJ/ Naoki Tada	
Author - Made for		Dokumentaravang/Godkand - Document responsible/Approved	
System Control Test		SEM CJ/ Tomokazu Ishii	
Dokumentareregler - Drawing rules		Produktbenamning - Product name	
		MIYU	
		Dokumentnr - Document nr	
		2/1911-ROA 128 1893/2	
		Blad - Sheet	
		04 of 23	

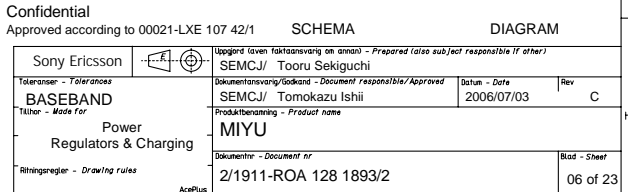
AccePlus

1 2 3 4 5 6 7 8 9 10 11

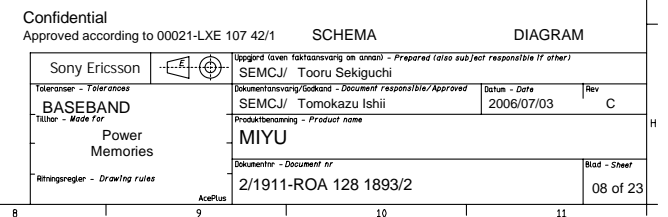
LZF 030 102/F RB



Confidential		Approved according to 00021-LXE 107 42/1		SCHEMA	DIAGRAM
Sony Ericsson		Appgod (aven faktansvarig on annan) - Prepared (also subject responsible if other)			
Toleranser - Tolerances		SEMCM/ Tooru Sekiguchi		Datum - Date	Rev
Färdig - Made for		SEMCM/ Tomokazu Ishii		2006/07/03	C
Baseringsregler - Drawing rules		MIYU		Blad - Sheet	
		2/1911-ROA 128 1893/2		05 of 23	



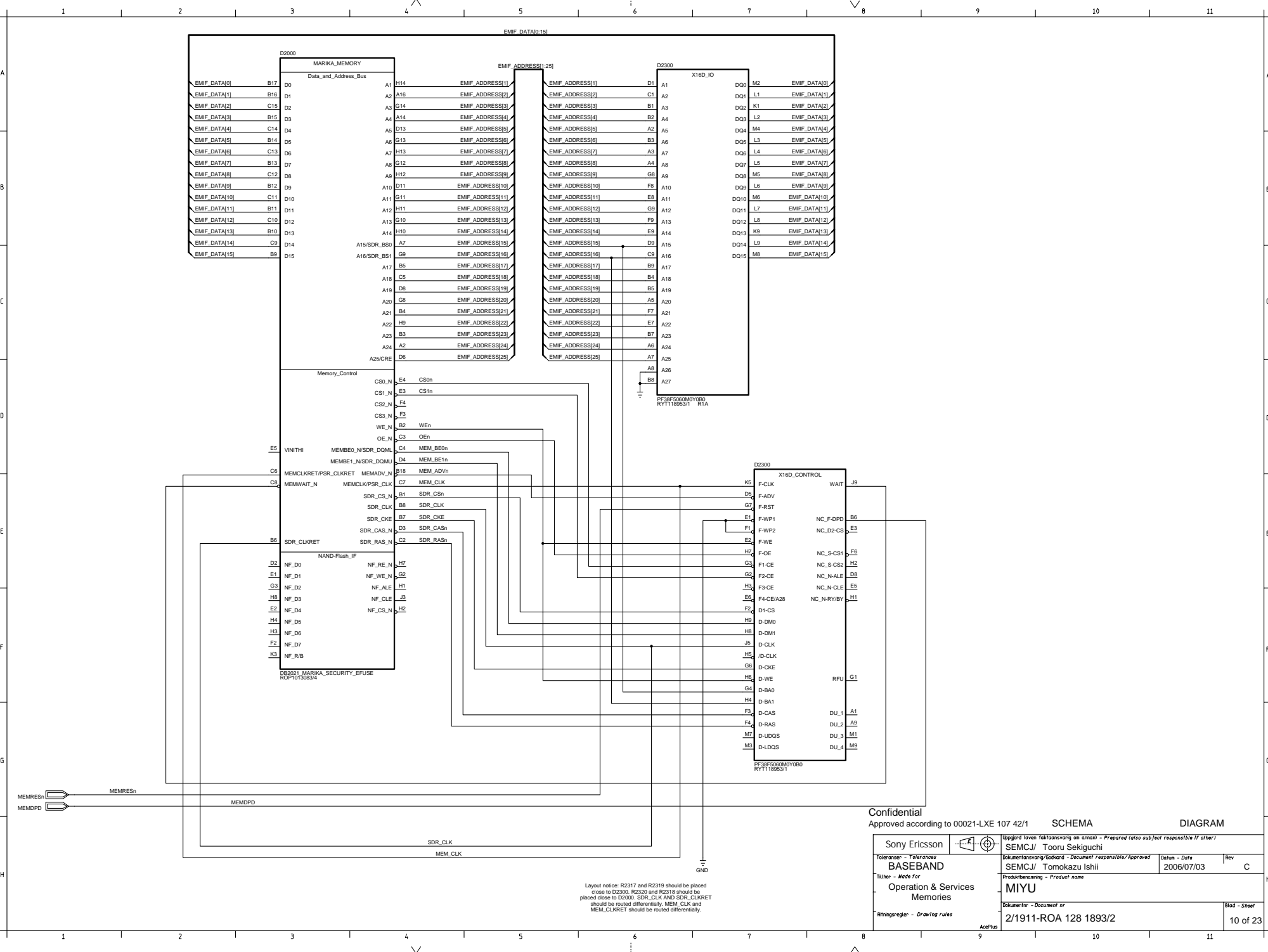








LZF 030 102/F RB



Layout notice: R2317 and R2319 should be placed close to D2300. R2320 and R2318 should be placed close to D2000. SDR\_CLK AND SDR\_CLKRET should be routed differentially. MEM\_CLK and MEM\_CLKRET should be routed differentially.

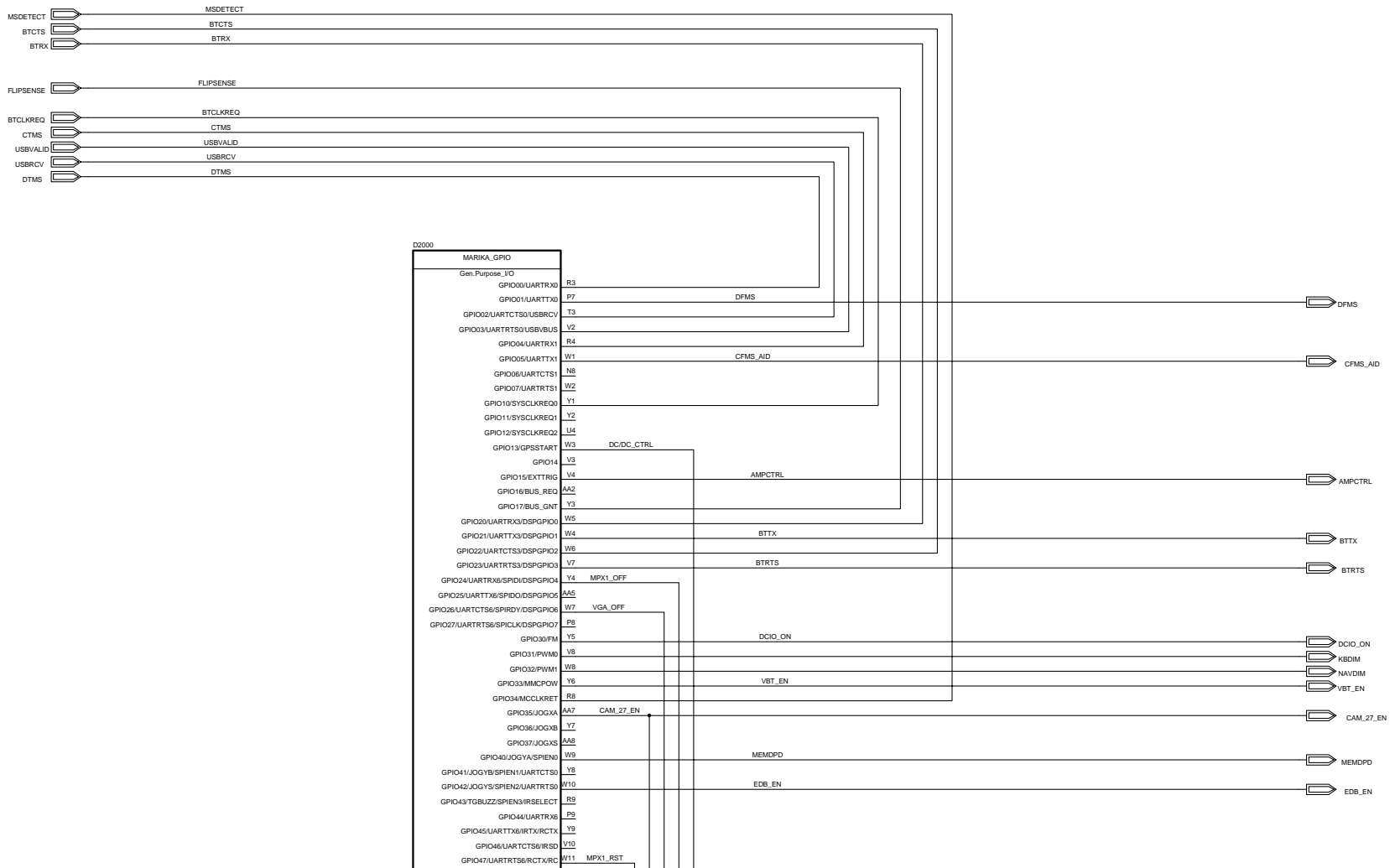
Confidential

Approved according to 00021-LXE 107 42/1

SCHEMA

DIAGRAM

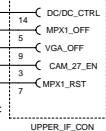
Sony Ericsson		Approved (even faktasvaring on annan) - Prepared (also subject responsible if other)	
BASEBAND		SEMCM/ Tooru Sekiguchi	
Titer - Made for		Dokumentation/Goodhand - Document responsible/Approved	
Operation & Services		SEMCM/ Tomokazu Ishii	
Memories		Produktbenämning - Product name	
Ritningsregler - Drawing rules		MIYU	
AcqPlus		Dokumentnr - Document nr	
		2/1911-ROA 128 1893/2	
		Blad - Sheet	
		10 of 23	



D2000  
MARICA\_GPIO  
Gen.Purpose\_I/O  
GPIO00/UARTX0 R3  
GPIO01/UARTX0 P7  
GPIO02/UARTCT50/USBRCV T3  
GPIO03/UARTCT50/USBVBUS V2  
GPIO04/UARTX1 R4  
GPIO05/UARTTX1 W1  
GPIO06/UARTCT51 N8  
GPIO07/UARTRT51 V2  
GPIO10/SYSCLKREQ0 Y1  
GPIO11/SYSCLKREQ1 Y2  
GPIO12/SYSCLKREQ2 U4  
GPIO13/GPSSTART W3  
GPIO14 V3  
GPIO15/EXTTRIG V4  
GPIO16/BUS\_REQ AA2  
GPIO17/BUS\_GNT Y3  
GPIO20/UARTX3/DSPGPIO0 W5  
GPIO21/UARTTX3/DSPGPIO1 W4  
GPIO22/UARTCT53/DSPGPIO2 W6  
GPIO23/UARTRT53/DSPGPIO3 V7  
GPIO24/UARTX6/SPID/DSGPIO4 Y4  
GPIO25/UARTTX6/SPID/DSGPIO5 AA5  
GPIO26/UARTCT56/SPIDY/DSGPIO6 W7  
GPIO27/UARTTS6/SPICK/DSGPIO7 P8  
GPIO30/FM Y5  
GPIO31/PWM0 V8  
GPIO32/PWM1 W8  
GPIO33/MMCP0W Y6  
GPIO34/MCLKRET R8  
GPIO35/JOGXA AA7  
GPIO36/JOGXB Y7  
GPIO37/JOGXS AA8  
GPIO40/JOGYA/SPLEN0 W9  
GPIO41/JOGYB/SPLEN1/UARTCT50 Y8  
GPIO42/JOGYS/SPLEN2/UARTRT50 W10  
GPIO43/TGBUZZ/SPLEN3/IRSELECT R9  
GPIO44/UARTX0 P9  
GPIO45/UARTTX6/IRTX/RCTX Y9  
GPIO46/UARTCT56/IRSD Y10  
GPIO47/UARTRT56/RCTX/IRC W11

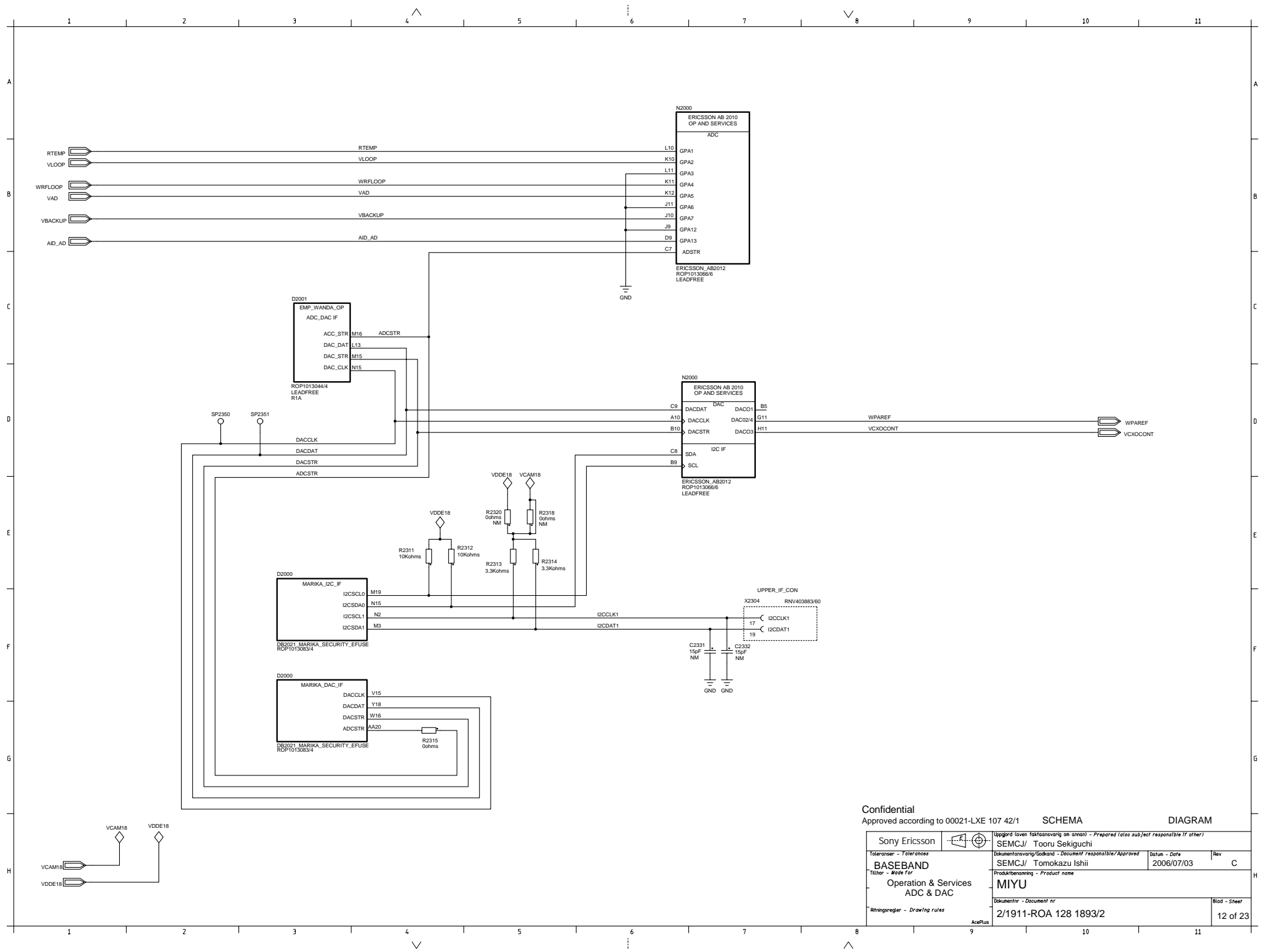
R00001 MARIKA\_SECURITY\_EFUSE  
R0P0130834

X2304 RNV40388360



Confidential		Approved according to 00021-LXE 107 42/1		SCHEMA		DIAGRAM	
Sony Ericsson		Upplagd given faktansvarig on annan - Prepared (also subject responsible if other)		SEMCI/ Naoki Tada		Rev	
BASEBAND		Documentansvarig/Godhand - Document responsibility/Approved		SEMCI/ Tomokazu Ishii		2006/07/03	
Tillver - Made for		Produktionsnavng - Product name		MIYU		C	
Rthningsregion - Drawing rules		Dokumentnr - Document nr		2/1911-ROA 128 1893/2		Blad - Sheet	
						11 of 23	

LZF 030 102/F RB

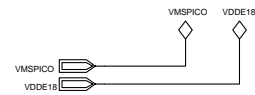
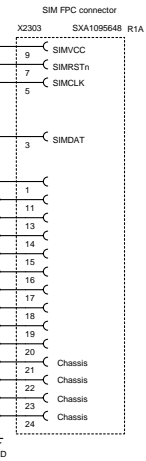
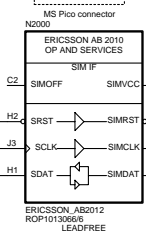
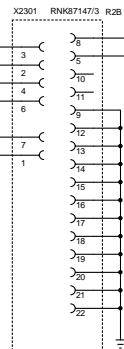
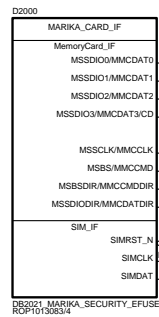


Confidential  
Approved according to 00021-LXE 107 42/1

SCHEMA

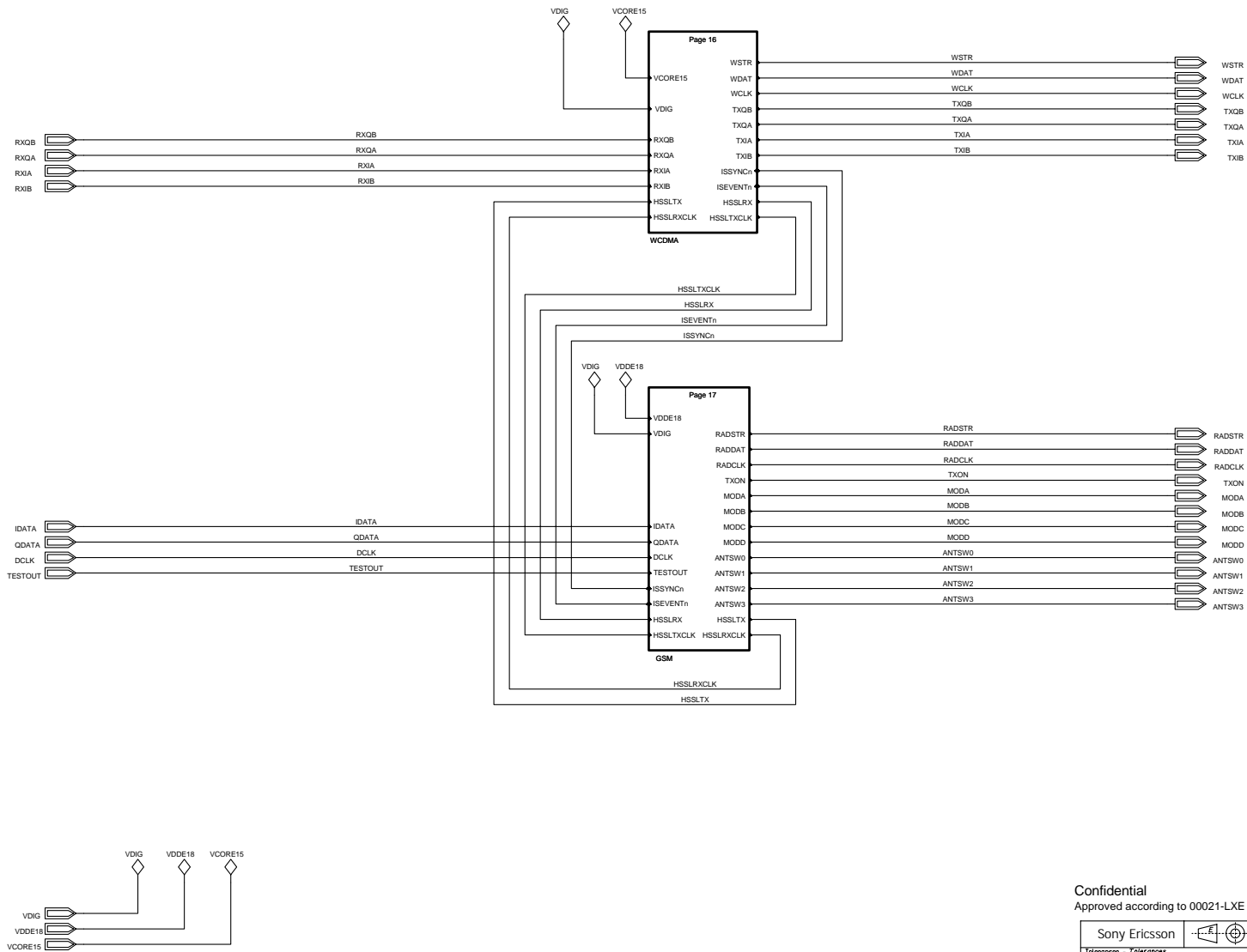
DIAGRAM

Sony Ericsson		Appgod (sen faktansvarig on annan) - Prepared (also subject responsible if other)	
BASEBAND		SEMCI/ Tooru Sekiguchi	
Author - Made for		dokumentansvarig/Godkand - Document responsible/Approved	
Operation & Services ADC & DAC		SEMCI/ Tomokazu Ishii	
Ritningsregler - Drawing rules		Produktbenämning - Product name	
2/1911-ROA 128 1893/2		MIYU	
Datum - Date		Blad - Sheet	
2006/07/03		12 of 23	
Rev		C	



Confidential			Approved according to 00021-LXE 107 42/1		SCHEMA	DIAGRAM
Sony Ericsson			Appgod (aven faktansvaring on annan) - Prepared (also subject responsible if other)			
Toleranser - Tolerances			SEMCH/ Tooru Sekiguchi		Datum - Date	Rev
BASEBAND			SEMCH/ Tomokazu Ishii		2006/07/03	C
Fäbber - Made for			MIYU			
Operation & Services			2/1911-ROA 128 1893/2			
MS Pico and SIM			Blad - Sheet			
Ritningsregler - Drawing rules			13 of 23			





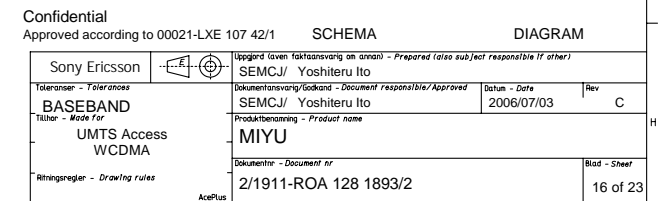
Confidential

Approved according to 00021-LXE 107 42/1

SCHEMA

DIAGRAM

Sony Ericsson		Appgod (sen faktasvaring on arnan) - Prepared (also subject responsible if other)		
BASEBAND		SEMCI/ Yoshiteru Ito		
Toleranser - Tolerances		Dokumentationsansvarig/Godkand - Document responsible/Approved		
Falter - Made for		SEMCI/ Yoshiteru Ito		Datum - Date
UMTS Access Top		MIYU		2006/07/03
Ritningsregler - Drawing rules		Dokumentnr - Document nr		Blad - Sheet
AcetPlus		2/1911-ROA 128 1893/2		15 of 23







1 2 3 4 5 6 7 8 9 10 11

A

A

B

B

C

C

D

D

E

E

F

F

G

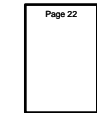
G

H

H

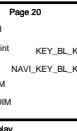
KBDIM  
NAVDIM

KBDIM  
NAVDIM



DCIOInt

VBATI

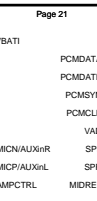


KEY\_BL\_K  
NAVL\_KEY\_BL\_K

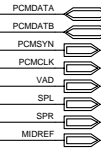
MICN/AUXinR  
MICP/AUXinL  
AMPCTRL

MICN/AUXinR  
MICP/AUXinL  
AMPCTRL

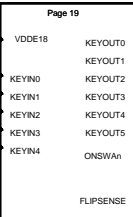
VBATI



PCMDATA  
PCMDATB  
PCMSYN  
PCMLCK  
VAD  
SPL  
SPR  
MIDREF



VDDE18

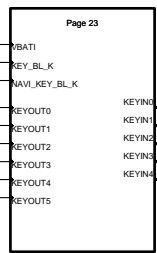


KEYOUT0  
KEYOUT1  
KEYOUT2  
KEYOUT3  
KEYOUT4  
KEYOUT5  
KEYIN0  
KEYIN1  
KEYIN2  
KEYIN3  
KEYIN4  
ONSWAn  
FLIPSENSE

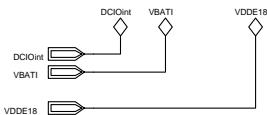
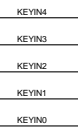
KEYOUT0  
KEYOUT1  
KEYOUT2  
KEYOUT3  
KEYOUT4  
KEYOUT5  
KEYIN0  
KEYIN1  
KEYIN2  
KEYIN3  
KEYIN4  
ONSWAn  
FLIPSENSE



VBATI

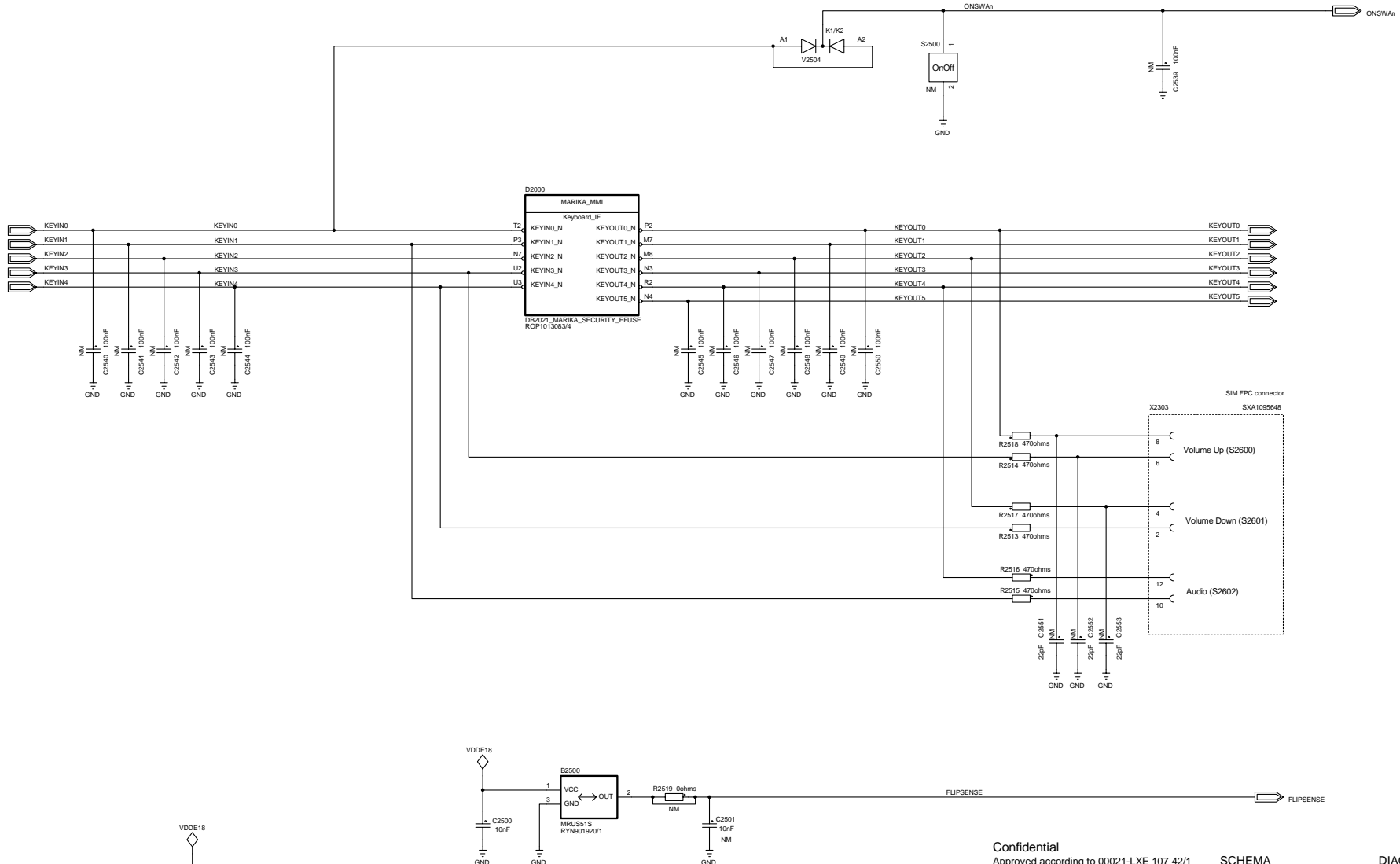


KEYOUT0  
KEYOUT1  
KEYOUT2  
KEYOUT3  
KEYOUT4  
KEYOUT5  
KEYIN0  
KEYIN1  
KEYIN2  
KEYIN3  
KEYIN4

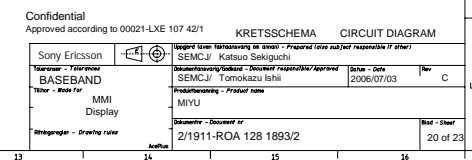


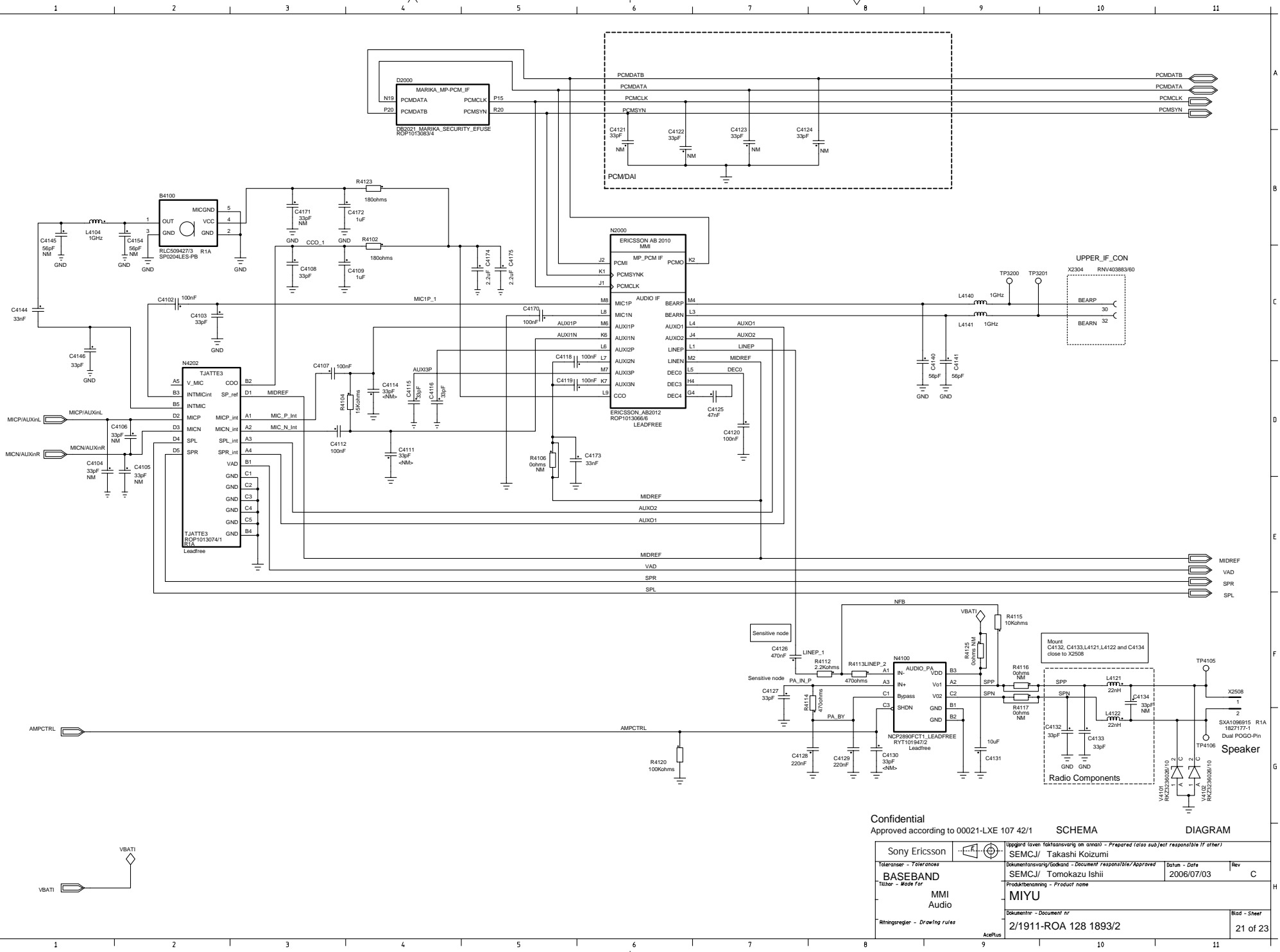
Confidential  
Approved according to 00021-LXE 107 42/1 SCHEMA DIAGRAM

Sony Ericsson		Approved (even faktasvaring on arnan) - Prepared (also subject responsible if other)	
Toleranser - Tolerances		SEMCMJ/ Naoki Tada	
BASEBAND		Dokumentationsgodkänd - Document responsible/Approved	Datum - Date
Färdig - Made for		SEMCMJ/ Tomokazu Ishii	2006/07/03
MMI		Rev C	
Top		Produktbenämning - Product name	
Ritningsregler - Drawing rules		MIYU	
		Dokumentnr - Document nr	
		2/1911-ROA 128 1893/2	
		Blad - Sheet	
		18 of 23	



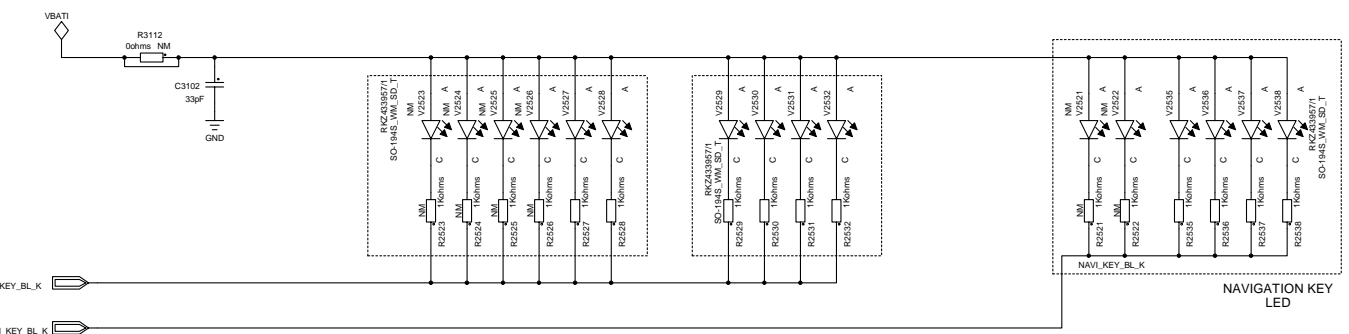
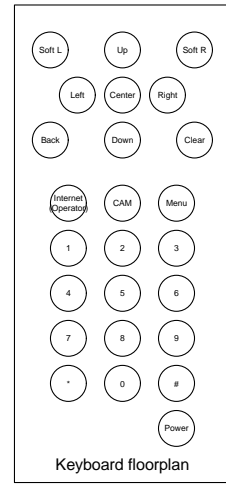
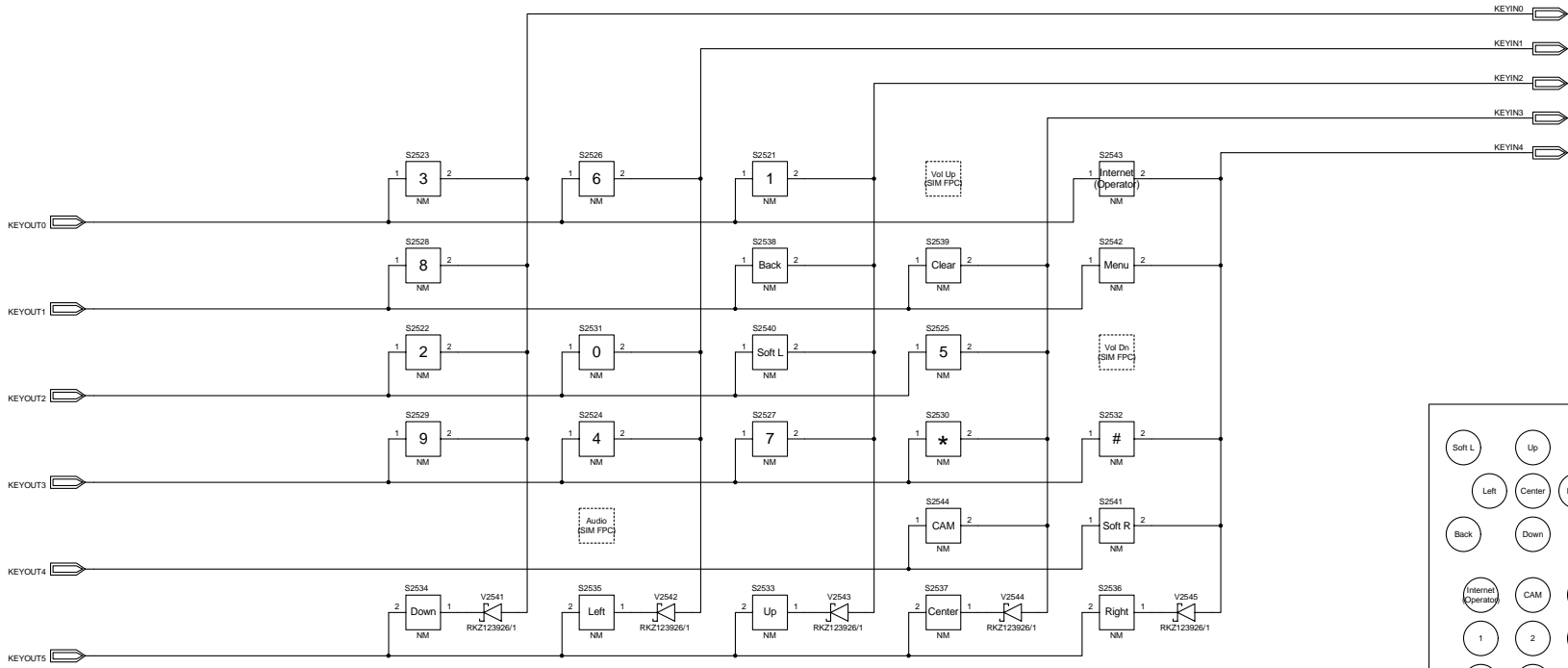
Confidential		Approved according to 00021-LXE 107 42/1		SCHEMA	DIAGRAM
Sony Ericsson		Appgod (aven fakturaavang on arvan) - Prepared (also subject responsible if other)			
Tolerances - Tolerances		SEMCM/ Naoki Tada		Datum - Date	
BASEBAND		SEMCM/ Tomokazu Ishii		Rev	
Author - Made for		MIYU		2006/07/03	
Productbenaming - Product name		2/1911-ROA 128 1893/2		Blad - Sheet	
Ritningsregler - Drawing rules		2/1911-ROA 128 1893/2		19 of 23	





Confidential		Approved according to 00021-LXE 107 42/1		SCHEMA		DIAGRAM	
Sony Ericsson		Approved (even faktasvaring on annan) - Prepared (also subject responsible if other)		SEMCMJ/ Takashi Koizumi		Datum - Date	
Toleranser - Tolerances		Dokumentationsansvarig/Document responsible/Approved		2006/07/03		Rev	
BASEBAND		SEMCMJ/ Tomokazu Ishii		2006/07/03		C	
Fäbör - Made for		Produktbenämning - Product name		MIYU			
Ritningsregler - Drawing rules		Dokumentnr - Document nr		2/1911-ROA 128 1893/2		Blad - Sheet	
						21 of 23	





Confidential		Approved according to 00021-LXE 107 42/1		SCHEMA	DIAGRAM
Sony Ericsson		Uppgörd (även fakturaavering on arvan) - Prepared (also subject responsible if other)			
Toleranser - Tolerances		SEMCI/ Naoki Tada		Datum - Date	
BASEBAND		SEMCI/ Tomokazu Ishii		2006/07/03	
Titel - Made for		MIYU		Blad - Sheet	
MMI Keypad2		Dokumentnr - Document nr		Blad - Sheet	
Ritningsregler - Drawing rules		2/1911-ROA 128 1893/2		23 of 23	